

INDEX OF SHEETS

SHEET NO.	ITEM
1	COVER SHEET
2	INDEX OF SHEETS / HIGHWAY STANDARDS
3	GENERAL NOTES
4	SUMMARY OF QUANTITIES
5	EXISTING / PROPOSED ROADWAY TYPICAL SECTIONS
6	EXISTING / PROPOSED STRUCTURE TYPICAL SECTIONS
7-8	EXISTING STRUCTURE INFORMATION
9-13	S.N. 092-0176 REPAIR PLANS
14-15	ROAD CLOSURE DETOUR DETAIL
16	TRAFFIC CONTROL AND PROTECTION DEVICES (ROAD AND SIDEROAD/STREET CLOSURES)

LIST OF STANDARDS

STANDARD NO.	DESCRIPTION
000001-05	STANDARD SYMBOLS, ABBREVIATIONS, AND PATTERNS
001001-02	AREAS OF REINFORCEMENT BARS
001006	DECIMAL OF AN INCH AND OF A FOOT
701301-03	LANE CLOSURE, 2L, 2W, SHORT TIME OPERATIONS
701901-01	TRAFFIC CONTROL DEVICES

FILE NAME = c:\projects\570749\cadsheets\570749-gennote.dgn	USER NAME = shorer_jm	DESIGNED - JMS	REVISED -	STATE OF ILLINOIS DEPARTMENT OF TRANSPORTATION	INDEX OF SHEETS /HIGHWAY STANDARDS	F.A.S. RTE. 331	SECTION (79-102)2009BBR	COUNTY VERMILION	TOTAL SHEETS 15	SHEET NO. 2	CONTRACT NO. 70749
PLOT SCALE = 100.0000' / IN.	PLOT DATE = 10/16/2008	DRAWN - JMS	CHECKED - JMS	REVISED -	REVISED -	SCALE: N/A	SHEET NO. 1 OF 1 SHEETS	STA.	TO STA.	FED. ROAD DIST. NO.	ILLINOIS FED. AID PROJECT
DATE - 090308	REVISED -										

GENERAL NOTES

G.N.-100
 ENGLISH UNITS OF MEASUREMENT SHALL GOVERN OVER AND
 SUPERSEDE ANY METRIC UNITS SHOWN IN THIS CONTRACT.
 WHERE INCLUDED, METRIC UNITS ARE FOR INFORMATION
 ONLY.

G.N.-105.09A
 ALL ELEVATIONS SHOWN IN THE PLANS ARE BASED ON
 NORTH AMERICAN VERTICAL DATUM OF 1988. (NAVD 88)

GN 406H Mixture Requirements

Location	092-0176
Mixture Use	Surface
AC/PG	PG 64-22
RAP % (Max)	15
Design Air Voids	4.0% @ Ndes=50
Mix Comp(Gradation)	IL 9.5
Friction Aggregate	MIX C

COMMITMENTS

COMMITMENTS ARE NOT TO BE ALTERED WITHOUT THE
 WRITTEN APPROVAL OF ALL PARTIES TO WHICH THE
 COMMITMENT WAS MADE.

THERE ARE NO COMMITMENTS FOR THIS PROJECT.

FILE NAME =	USER NAME = shor-jm	DESIGNED - JMS	REVISED -	STATE OF ILLINOIS DEPARTMENT OF TRANSPORTATION	GENERAL NOTES /COMMITMENTS			F.A.S. RTE.	SECTION	COUNTY	TOTAL SHEETS	SHEET NO.
c:\projects\4570749\cad\sheets\4570749-1-1-gennote.dgn		DRAWN - JMS	REVISED -		331	(79-102)20098BR	VERMILION	15	3			
PLOT SCALE = 100.0000 ' / IN.		CHECKED - JMS	REVISED -		CONTRACT NO. 70749							
PLOT DATE = 10/10/2008		DATE - 090308	REVISED -		SCALE: N/A	SHEET NO. 1 OF 1 SHEETS	STA. TO STA.	FED. ROAD DIST. NO.	ILLINOIS FED. AID PROJECT			

SUMMARY OF QUANTITIES

LOCATION OF WORK: VERMILION COUNTY
RURAL
ROADWAY/ STRUCTURE
IMPROVEMENTS
FAS 331 (CH 10)
STA. 69+38.43
STA. 69+84.83
100% STATE
SFTY-2A
TOTAL

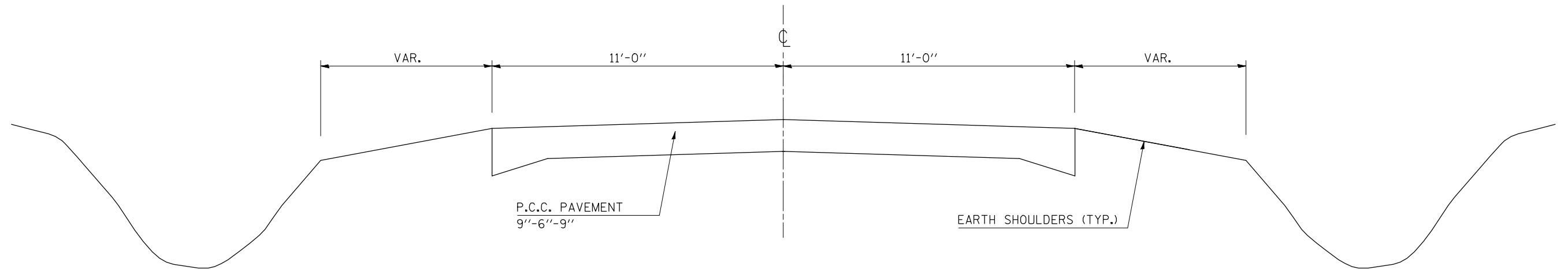
CONSTRUCTION TYPE CODE: SFTY-2A
TOTAL

CODE NO	ITEM	UNIT	QUANTITY
40600100	BITUMINOUS MATERIALS (PRIME COAT)	GALLON	1.5
40603310	HOT-MIX ASPHALT SURFACE COURSE, MIX "C", N50	TON	9.0
44000198	HOT-MIX ASPHALT SURFACE REMOVAL, VARIABLE DEPTH	SQ YD	14.8
50400405	PRECAST PRESTRESSED CONCRETE DECK BEAMS (21" DEPTH)	SQ FT	536.0
50900905	REMOVING AND RE-ERECTING EXISTING ^{SPACE} RAILING	FOOT	45.5
58100200	WATERPROOFING MEMBRANE SYSTEM	SQ YD	75.3
58300100	PORTLAND CEMENT MORTAR FAIRING COURSE	FOOT	272.0
67100100	MOBILIZATION	L SUM	1.0
X0320047	REMOVAL OF EXISTING PRECAST PRESTRESSED CONCRETE DECK BEAMS	SQ FT	545.0
X0324952	DETOUR SIGNING	L SUM	1.0

FILE NAME = es:\projects\4570749\cadsheets\4570749-11\sq.dgn	USER NAME = sherer.jm	DESIGNED - JMS	REVISED -	STATE OF ILLINOIS DEPARTMENT OF TRANSPORTATION	SUMMARY OF QUANTITIES	F.A.S. RTE. 331	SECTION (79-102)2009BBR	COUNTY VERMILION	TOTAL SHEETS 15	SHEET NO. 4
PLOT SCALE = 100.0000 ' / IN.	CHECKED - JMS	REVISIED -	SCALE: N/A	SHEET NO. 1 OF 1 SHEETS	STA. TO STA.	FED. ROAD DIST. NO. [ILLINOIS] FED. AID PROJECT CONTRACT NO. 70749				
PLOT DATE = 10/16/2008	DATE - 090308	REVISIED -								

EXISTING & PROPOSED ROADWAY TYPICAL SECTION (INFORMATION ONLY)

STATION TO STATION
68+16.33 71+57.03



FILE NAME =	USER NAME = shererjm	DESIGNED - JMS	REVISED - ---
ct:\projects\d570749\cadsheets\d570749-sh-typical.dgn		DRAWN - JMS	REVISED - ---
	PLOT SCALE = 100.0000' / IN.	CHECKED - JMS	REVISED - ---
	PLOT DATE = 10/10/2008	DATE - 090308	REVISED - ---

**STATE OF ILLINOIS
DEPARTMENT OF TRANSPORTATION**

EXISTING AND PROPOSED ROADWAY TYPICAL SECTIONS

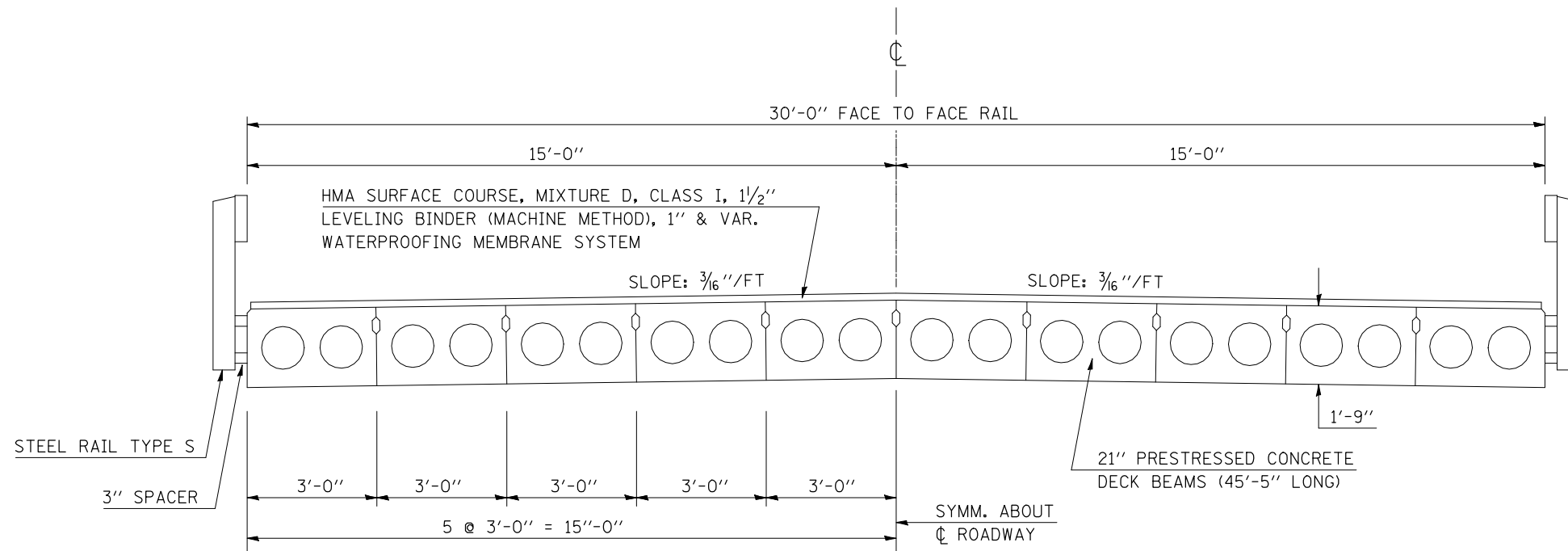
SCALE: N/A SHEET NO. 1 OF 2 SHEETS STA. 68+16.33 TO STA. 71+57.03

F.A.S. RTE.	SECTION	COUNTY	TOTAL SHEETS	SHEET NO.
331	(79-102)2009BBR	VERMILION	16	5
FED. ROAD DIST. NO. - ILLINOIS FED. AID PROJECT			CONTRACT NO. 70749	

EXISTING STRUCTURE TYPICAL SECTION

S. N. 092-0176

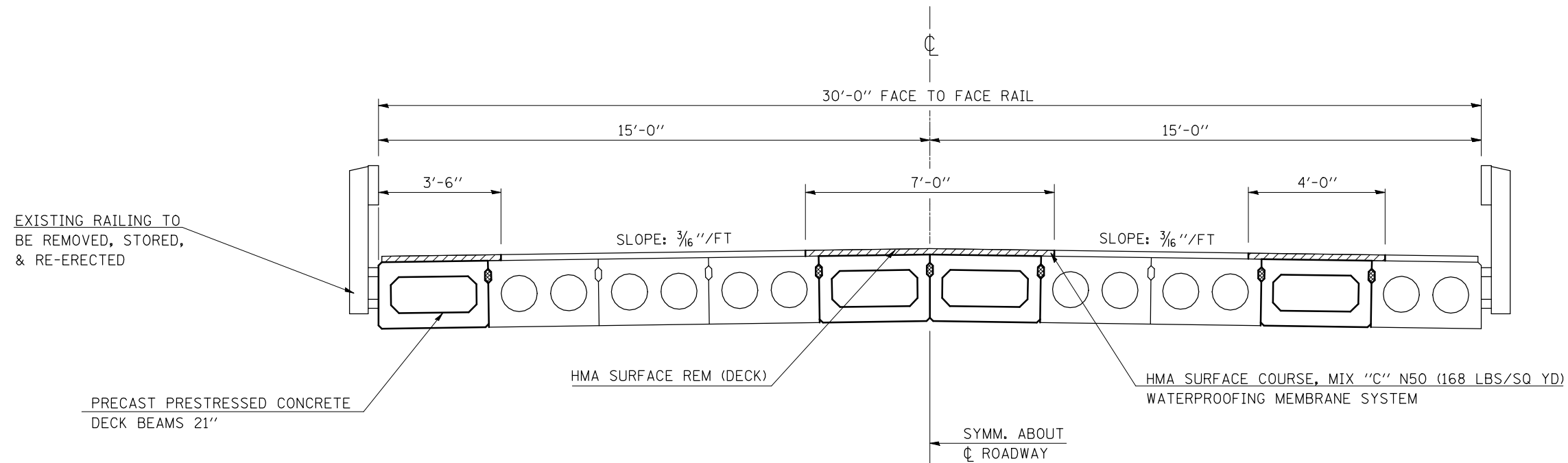
STA. 69+38.43 TO STA. 69+84.83



PROPOSED STRUCTURE TYPICAL SECTION

S. N. 092-0176

STA. 69+38.43 TO STA. 69+84.83



FILE NAME =	USER NAME = shererjm	DESIGNED - JMS	REVISED - ---
ct:\projects\d570749\cad\sheet\d570749-sh-typical.dgn		DRAWN - JMS	REVISED - ---
		CHECKED - JMS	REVISED - ---
		DATE - 090308	REVISED - ---

STATE OF ILLINOIS
DEPARTMENT OF TRANSPORTATION

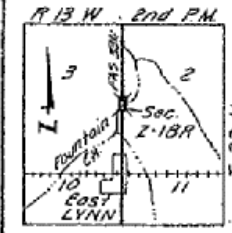
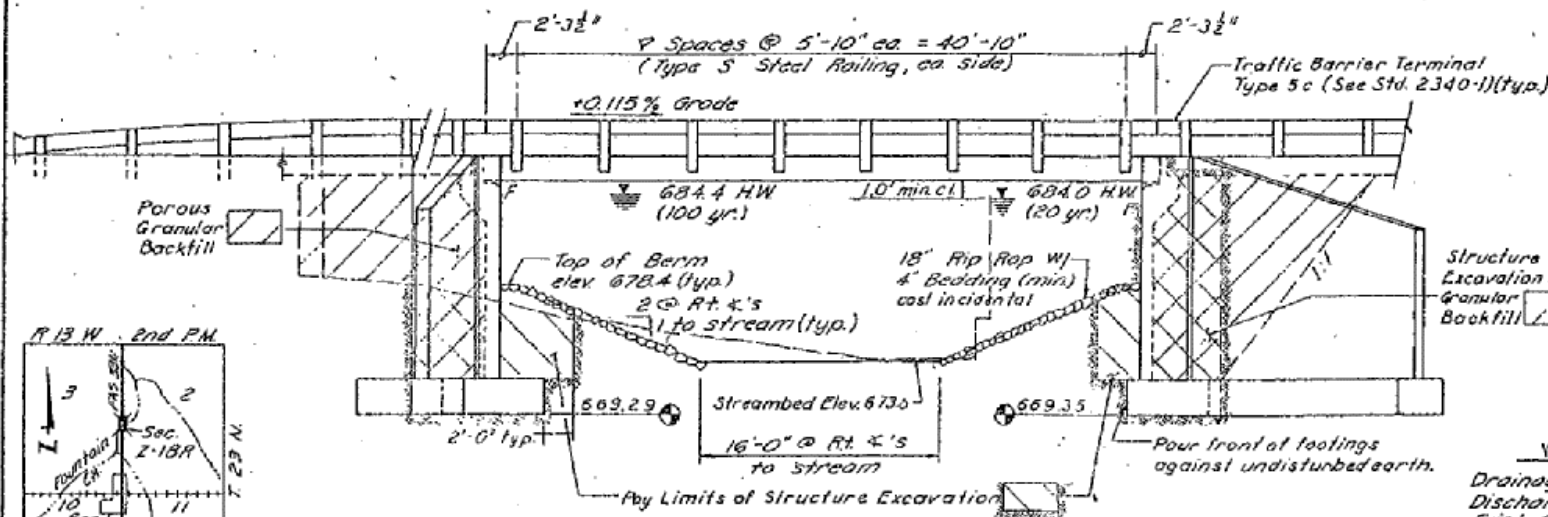
EXISTING AND PROPOSED STRUCTURE TYPICAL SECTIONS

SCALE: N/A SHEET NO. 2 OF 2 SHEETS STA. 69+38.43 TO STA. 69+84.83

F.A.S. RTE.	SECTION	COUNTY	TOTAL SHEETS	SHEET NO.
331	(79-102)2009BBR	VERMILION	16	6
FED. ROAD DIST. NO. - ILLINOIS FED. AID PROJECT				

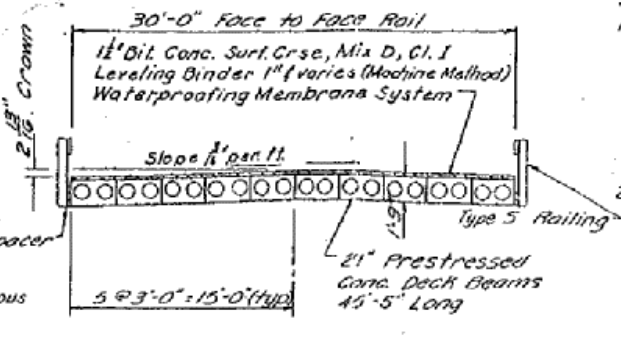
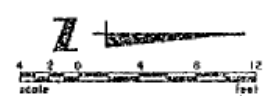
Bench Mark: E. End of W. Headwall
 Lt. Sta. 23+81.2
 Elev. 687.89

DATE	REVISION	BY	NO.
FAS 331	2-1-BR	VERSION	19 10



LOCATION SKETCH

ELEVATION



ROADWAY CROSS SECTION

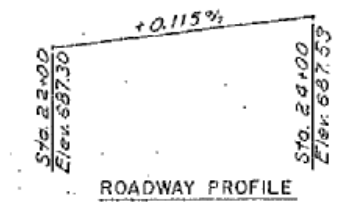
WATERWAY INFORMATION

Drainage Area	14.8	Sq. Mi.
Discharge (Design Flood 20 yr.)	1720	c.f.s.
Exist. Opening (Below 20 yr. HWIE)	327	Sq. Ft.
Required Opening (Below 20 yr. HWE)	330	Sq. Ft.
Prop. Opening (Below 20 yr. HWE)	333	Sq. Ft.
Created Head for Design Flood	0.25	ft.
100 yr. Discharge	2510	c.f.s.
Created Head for 100 yr. Flood	0.66	ft.

DESIGN STRESSES

FIELD UNITS

f'_c	= 3500 psi.
f_y	= 60,000 psi.
n	= 30



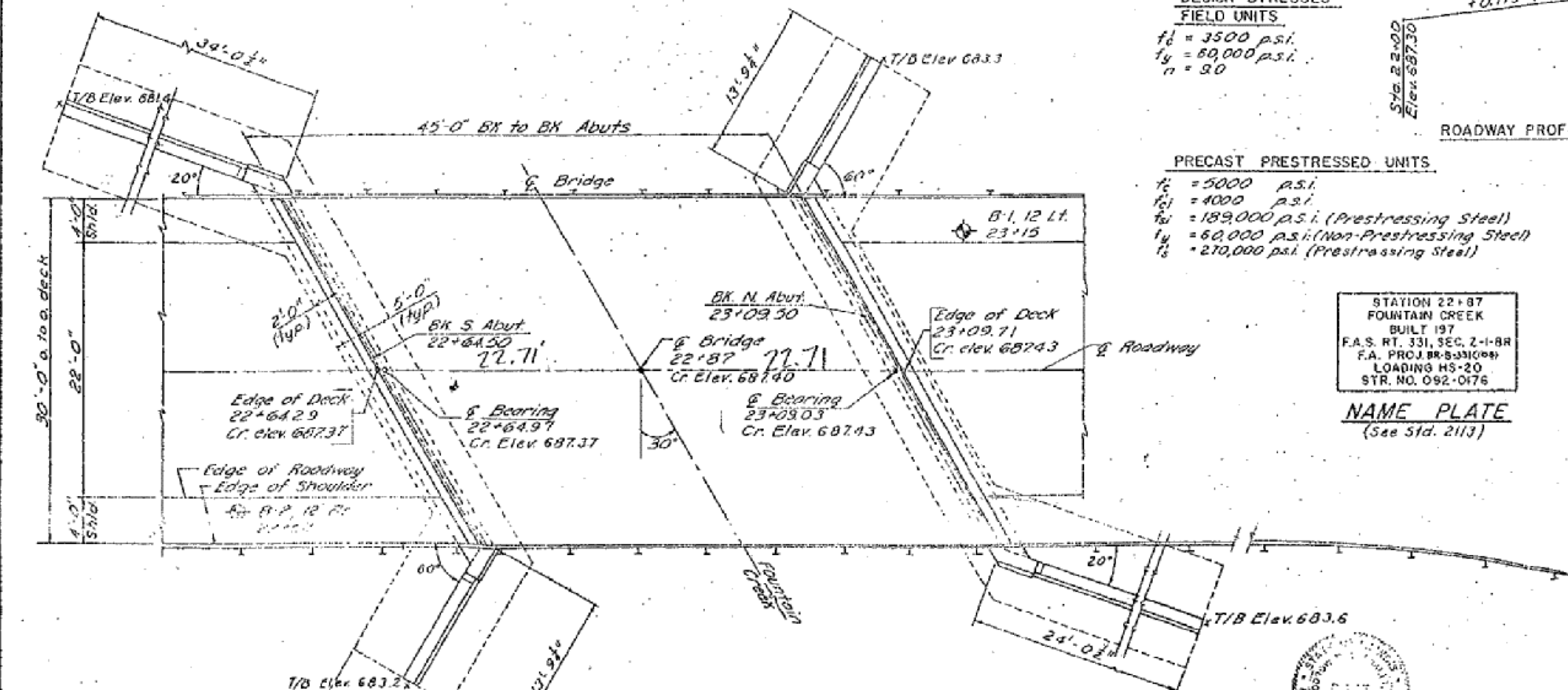
ROADWAY PROFILE

PRECAST PRESTRESSED UNITS

f'_c	= 5000 psi.
f'_c	= 4000 psi.
f_y	= 189,000 psi. (Prestressing Steel)
f_y	= 60,000 psi. (Non-Prestressing Steel)
f_s	= 210,000 psi. (Prestressing Steel)

STATION 22+87
 FOUNTAIN CREEK
 BUILT 197
 F.A.S. RT. 331, SEC. 2-1-BR
 F.A. PROJ. BR. 331000
 LOADING HS-20
 STR. NO. 092-0176

NAME PLATE
 (See Std. 2113)



NOTES:

- The "State of Illinois Standard Specification for Road & Bridge Construction" adopted July 1, 1976, and latest revisions shall apply.
- Concrete: Class X concrete shall be used throughout except for precast units. See the applicable specs for concrete requirements for precast units.
- Backfill behind abutments shall not be placed until precast beams have been dowelled into place. See Article 502.11 of the Standard Specifications.
- See Special Provisions for soil boring logs.

EXISTING STRUCTURE

Sta. 22+81.88 Span @ 45', Concrete slab bridge with concrete rails, closed abutments and wingwalls. The bridge contractor shall remove existing structure in accordance with Section 501 of the Standard Specifications. All materials are considered non-salvageable under this contract, except that broken concrete which meets the requirements for broken concrete riprap (see special provisions) which may be used as riprap as directed by the Engineer. All remaining materials shall be disposed of to the approval of the Engineer.

Portions of the existing South Abutment and wingwalls may remain in place if they do not interfere with the proposed bridge and roadway construction & are covered by a minimum of 2 ft of surface cover without deviating from proposed slopes and grades.

TOTAL BILL OF MATERIALS

Item	Unit	Quantity
Porous Granular Backfill	Ton	1616
Removal of Exist. Structures	Each	1
Structure Excavation	Cu.Yd.	84.3
Class X Concrete	Cu.Yd.	197.6
Precast Prestressed Concrete Deck Beams (21')	Sq.Ft.	1363
Reinforcement Bars	Lbs.	18,230
Name Plates	Each	1
Waterproofing Membrane System	Sq.Yd.	155
Bituminous Concrete Surface Course, Mix Type C, Class I	Tons	13
Steel Railing, Type 5	Lt. Ft.	91
Portland Cement Mortar for Railing Gr. (6 in. Ft.)	Cu. Ft.	409

FILE NAME =	USER NAME = shererjm	DESIGNED - JMS	REVISED -
ca:\proj\jects\d570749\cad\sheet\d570749-1-1-detailed.dgn		DRAWN - JMS	REVISED -
PLOT SCALE = 100.0000' / IN.		CHECKED - JMS	REVISED -
PLOT DATE = 10/10/2008		DATE - 090308	REVISED -

STATE OF ILLINOIS
 DEPARTMENT OF TRANSPORTATION

EXISTING STRUCTURE (INFORMATION ONLY)

SCALE: N/A SHEET NO. 1 OF 2 SHEETS STA. 69+38.43 TO STA. 69+84.83

F.A.S. RTE.	SECTION	COUNTY	TOTAL SHEETS	SHEET NO.
331	(79-102)2009BBR	VERMILION	16	7
FED. ROAD DIST. NO. ILLINOIS FED. AID PROJECT			CONTRACT NO. 70749	

STATE OF ILLINOIS
DEPARTMENT OF TRANSPORTATION

GENERAL NOTES

All structural steel shall conform to AASHTO Classification M-270 Gr. 36, unless otherwise noted.

Plan dimensions and details relative to existing plans are subject to routine variations. The Contractor shall field verify existing dimensions and details affecting new construction and make necessary approved adjustments prior to construction or ordering of materials. Such variations shall not be cause for additional compensation for a change in scope of the work, however, the Contractor will be paid for the quantity actually furnished based upon the unit price bid for the work.

The contractor is advised that the existing PPC Deck Beams are in a deteriorated condition with reduced load carrying capacity. It is the contractor's responsibility to account for the condition of the beams when developing construction procedures.

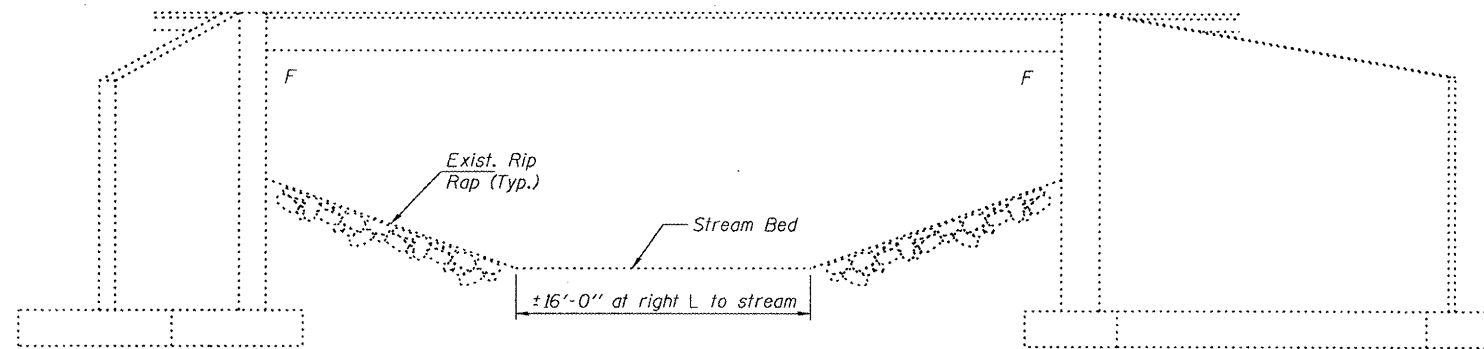
If the contractor's procedure for existing beam removal or placement of new beams involves placement of cranes or other heavy equipment on the bridge, a detailed procedure shall be submitted to the Engineer for approval. The procedure shall include calculations, prepared and sealed by an Illinois Licensed Structural Engineer, verifying that the equipment and procedure used will not overstress the new or existing beams. To distribute load to multiple beams and protect the existing surface, in all cases a double layer mat of heavy timbers shall be used at all times under crane tracks or wheels and any outriggers in the down position. If necessary, shims shall be used under the crane mat to ensure uniform contact with the underlying beams. If heavy equipment will be placed on new PPC deck beams, the following shall be done prior to placement of the timber mats: placement and tightening of transverse tie assemblies, grouting and curing the dowel rods 24 hours minimum and grouting and curing the shear keys.

Any damage done to the bridge during beam removal shall be repaired by the Contractor. Cost to be included in the cost of Removal of Existing PPC Deck Beams.

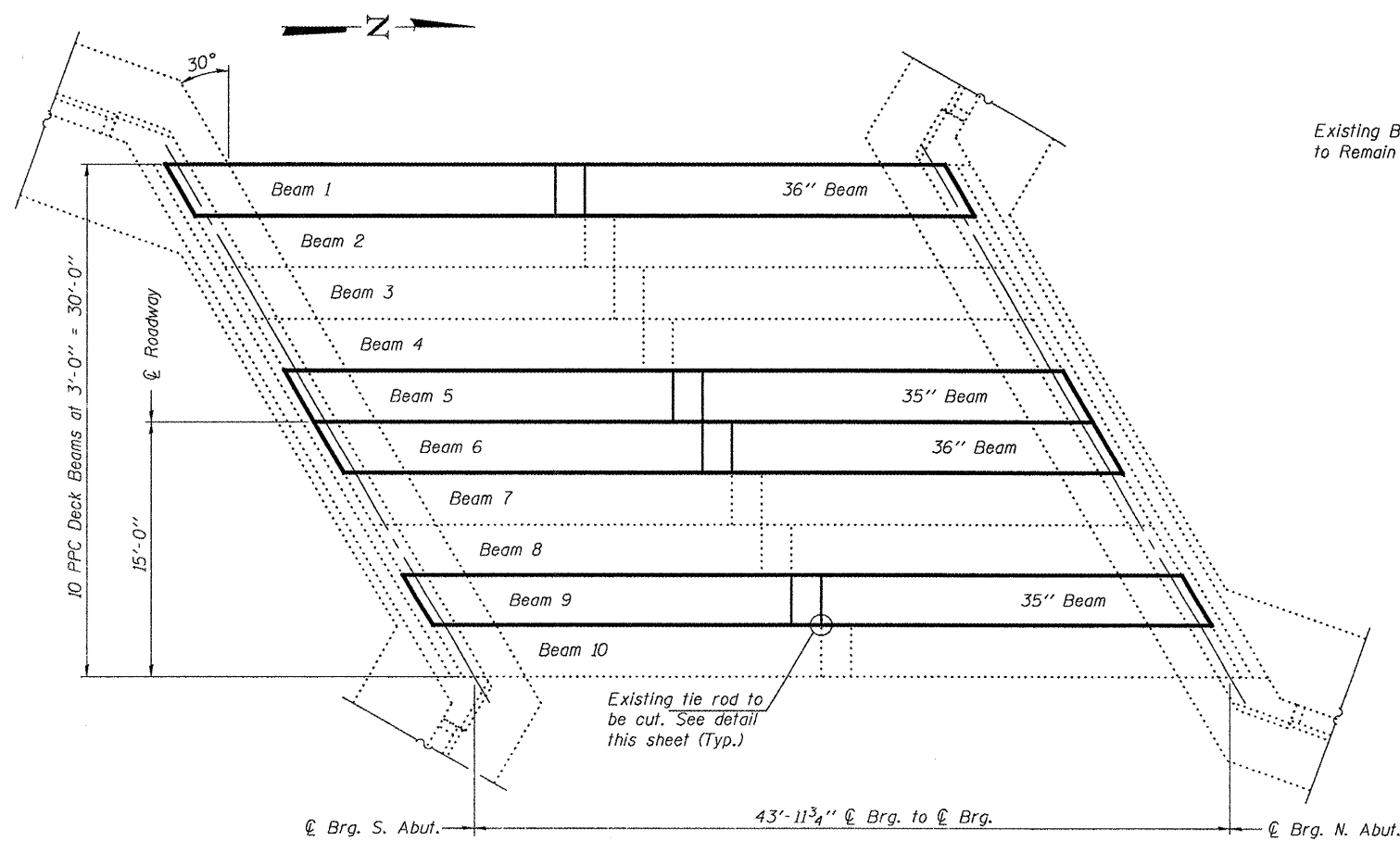
The top surface of the beams shall be finished according to the IDOT Manual for Fabrication of Precast Prestressed Concrete Products.

Temporary concrete barrier shall only be anchored into the overlay and not into the PPC Deck Beams.

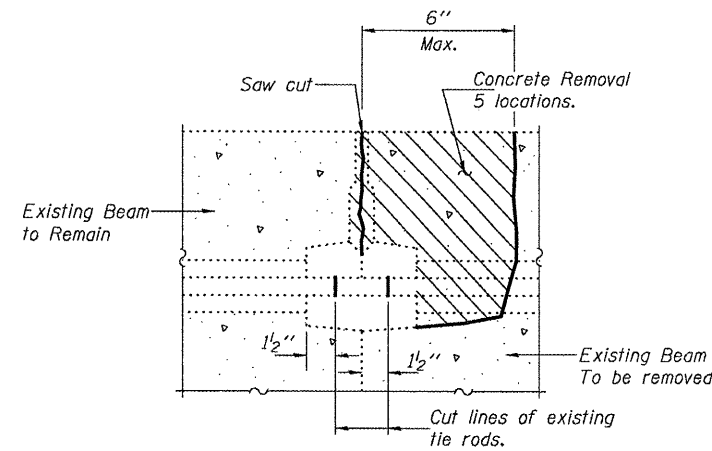
Road to be closed during construction.



ELEVATION



PLAN

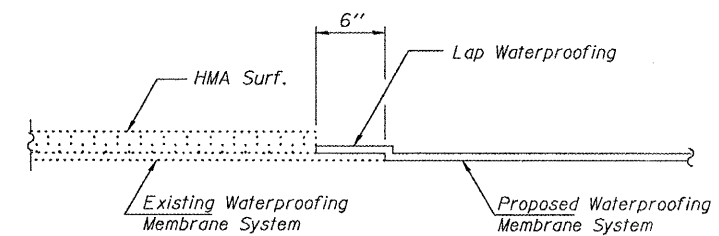


BEAM REMOVAL DETAIL AT TRANSVERSE TIES

DESIGN STRESSES

PRECAST PRESTRESSED UNITS

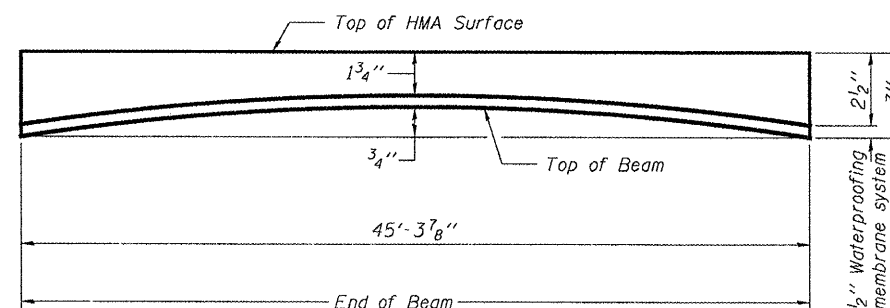
$f'_c = 6,000$ psi
 $f'_{ci} = 5,000$ psi
 $f'_s = 270,000$ psi ($\frac{1}{2}$ " ϕ low lax strands)
 $f'_{si} = 201,960$ psi ($\frac{1}{2}$ " ϕ low lax strands)



WATERPROOFING TREATMENT

TOTAL BILL OF MATERIAL

ITEM	UNIT	QUANTITY
Removal of Existing PPC Deck Beams	Sq. Ft.	545
Precast Prestressed Concrete Deck Beams (21" Depth)	Sq. Ft.	536
Hot-Mix Asphalt Surface Removal	Sq. Yd.	14.8
HMA Surface Course Mix "C" N50	Tons	9.0
PC Mortar Fairing Course	Foot	272
Removing & Re-erecting Existing Railing	Foot	45.5
Waterproofing Membrane System	Sq. Yd.	75.3



ANTICIPATED INITIAL CAMBER DIAGRAM



Expires: November 30, 2010

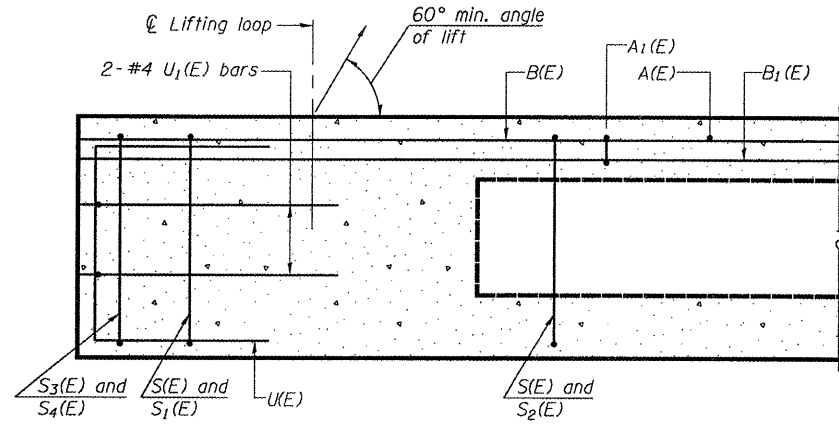
DESIGNED	[Signature]
CHECKED	[Signature]
DRAWN	Steffen
CHECKED	AGB GJC

OCTOBER 31, 2008
 EXAMINED [Signature]
 PASSED [Signature]
 ENGINEER OF STRUCTURAL ENGINEERS
 ENGINEER OF BRIDGES AND STRUCTURES

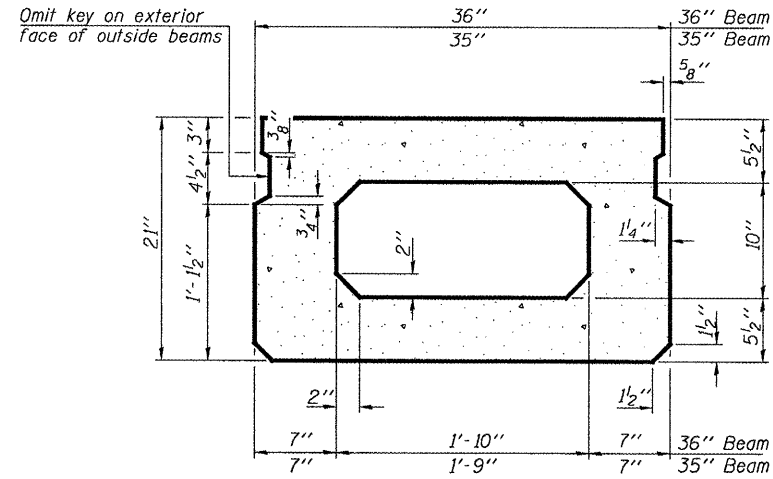
**PLAN & ELEVATION
SN 092-0176**

SHEET NO. 1 5 SHEETS	F.A.S. RTE.	SECTION	COUNTY	TOTAL SHEETS	SHEET NO.
	331	(79-102)2009BBR	VERMILION	16	9
FED. ROAD DIST. NO.			ILLINOIS	FED. AID PROJECT	
CONTRACT NO. 70749					

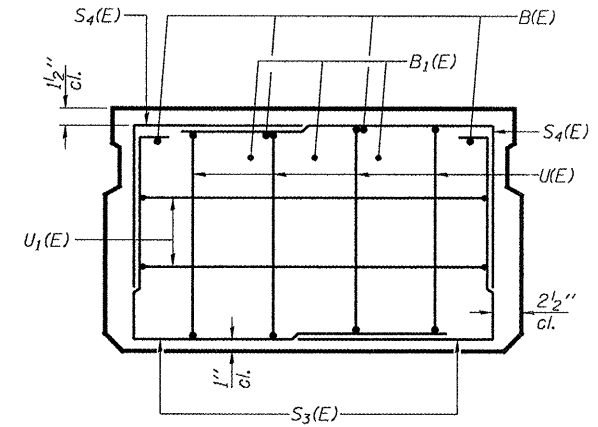
STATE OF ILLINOIS
DEPARTMENT OF TRANSPORTATION



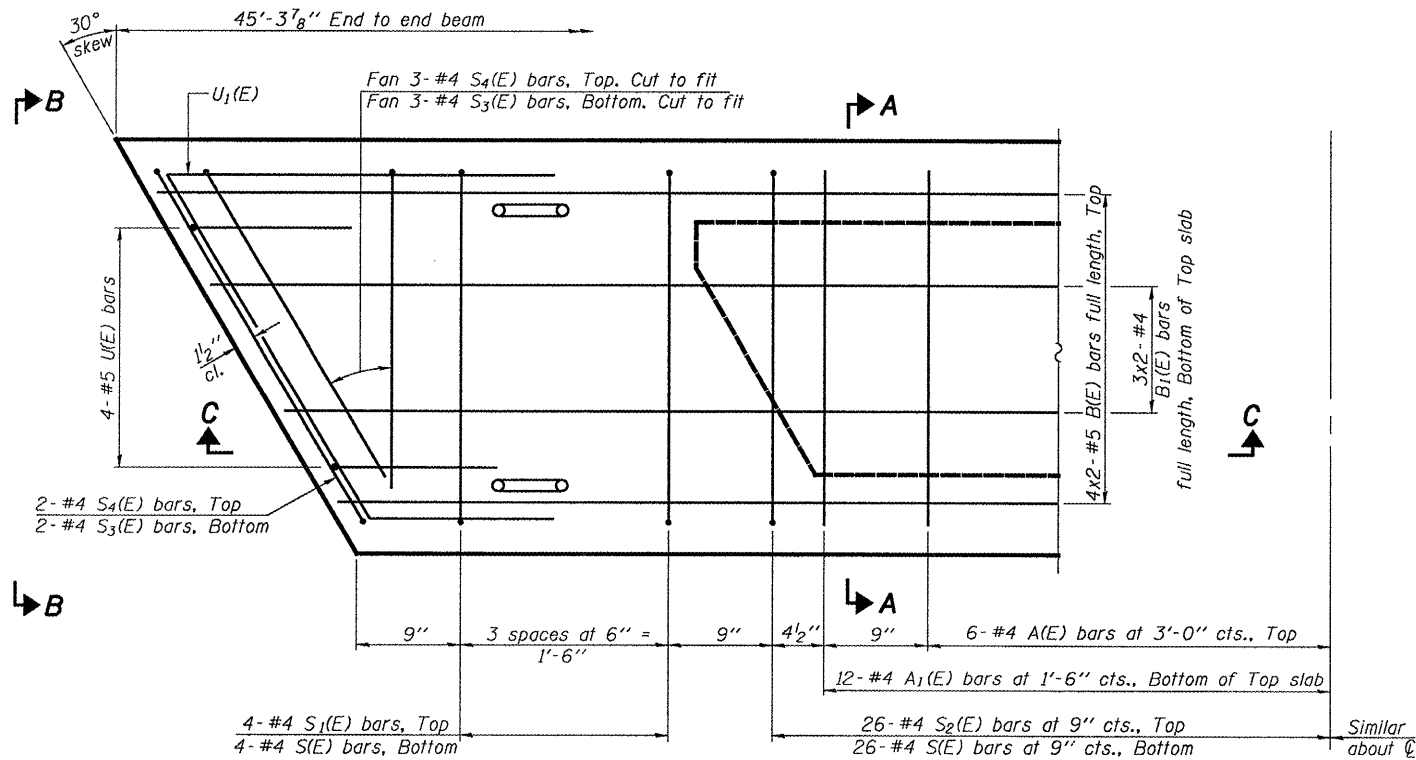
SECTION C-C



SECTION A-A
(Showing dimensions)

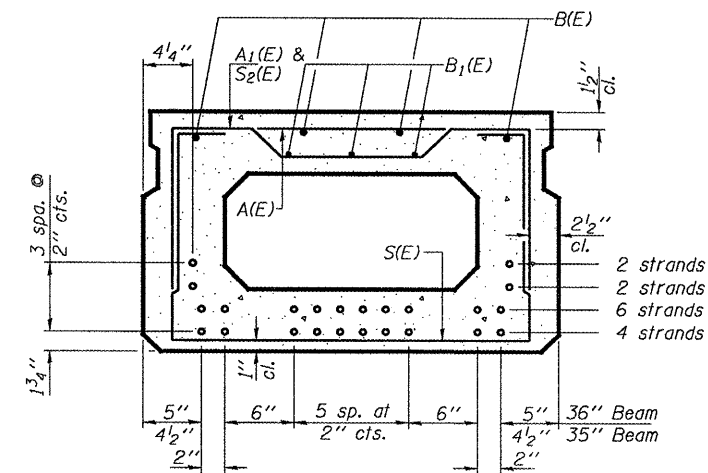


VIEW B-B



PLAN VIEW

Note: Spacing of S(E) and S2(E) bars may be adjusted up to 4" in the immediate area of the transverse tie diaphragms to miss the block outs for the transverse ties.



SECTION A-A
(Showing reinforcement and permissible strand locations)

Note: Place the number of strands specified in each row symmetrically about the centerline of beam in the permissible strand locations shown.

BAR LIST FOR
ONE 35" BEAM ONLY
(For information only)

Bar	No.	Size	Length	Shape
A(E)	12	#4	2'-6"	—
A1(E)	24	#4	2'-9"	—
B(E)	8	#5	23'-8"	—
B1(E)	6	#4	23'-5"	—
S(E)	60	#4	6'-4"	U
S1(E)	8	#4	4'-10"	U
S2(E)	52	#4	5'-1"	U
S3(E)	10	#4	4'-10"	U
S4(E)	10	#4	4'-5"	U
U(E)	8	#5	4'-0"	U
U1(E)	4	#4	6'-8"	U

BAR LIST FOR
ONE 36" BEAM ONLY
(For information only)

Bar	No.	Size	Length	Shape
A(E)	12	#4	2'-7"	—
A1(E)	24	#4	2'-10"	—
B(E)	8	#5	23'-8"	—
B1(E)	6	#4	23'-5"	—
S(E)	60	#4	6'-5"	U
S1(E)	8	#4	4'-11"	U
S2(E)	52	#4	5'-2"	U
S3(E)	10	#4	4'-10"	U
S4(E)	10	#4	4'-5"	U
U(E)	8	#5	4'-0"	U
U1(E)	4	#4	6'-10"	U

Bars indicated thus 4 x 2-#5 etc. indicates 4 lines of bars with 2 lengths per line.

Note: See sheet 3 of 5 for additional details and Bill of Material.

MIN. BAR LAP

#4 - 1'-8"
#5 - 2'-2"

BEAM DETAILS
SN 092-0176

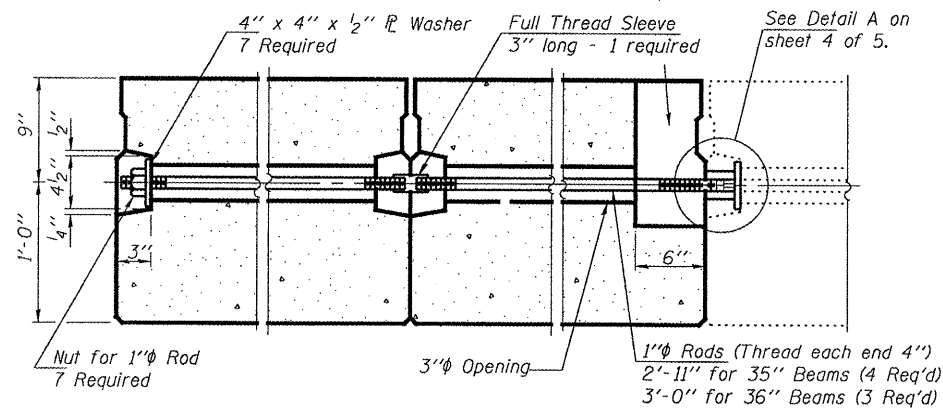
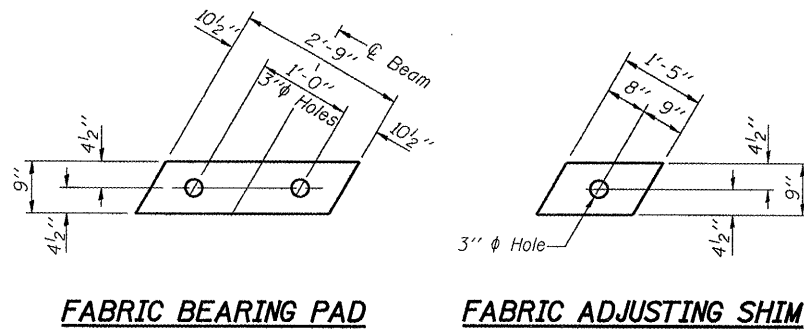
DESIGNED	AJB
CHECKED	GGH
DRAWN	Steffen
CHECKED	AJB GGH

OCTOBER 31, 2008
EXAMINED *Carl Proyer*
ENGINEER OF STRUCTURAL SERVICES
PASSED *Ralph E. Anderson*
ENGINEER OF BRIDGES AND STRUCTURES

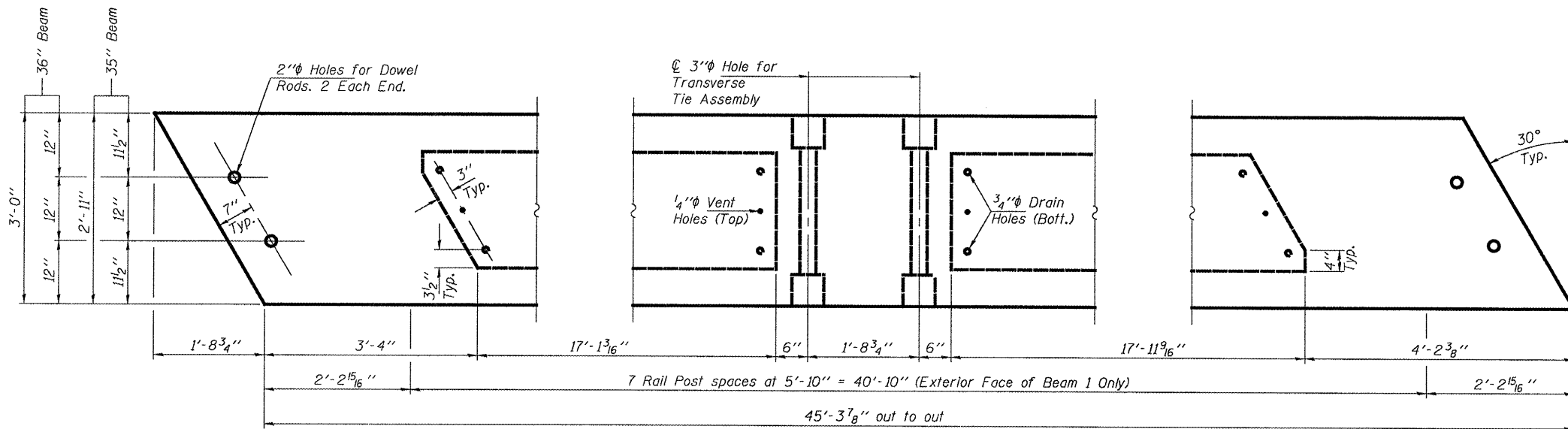
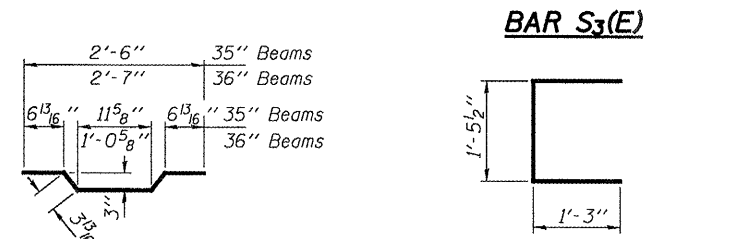
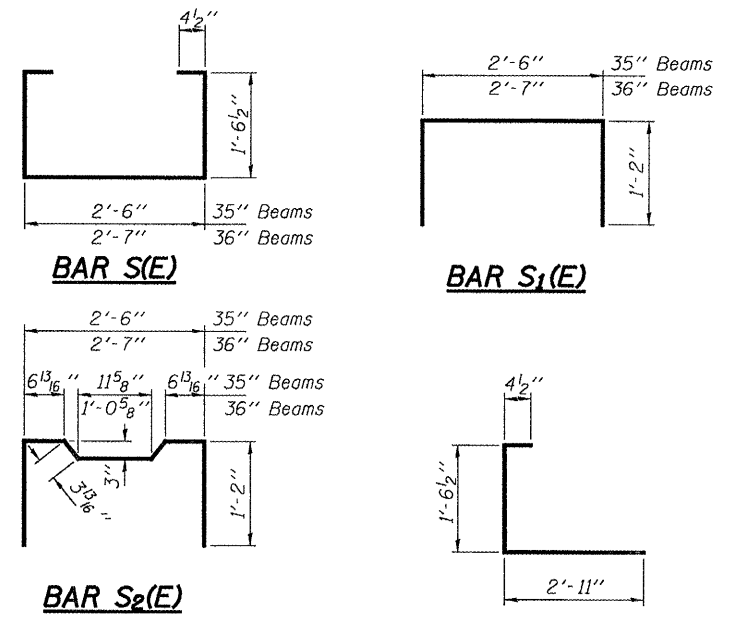
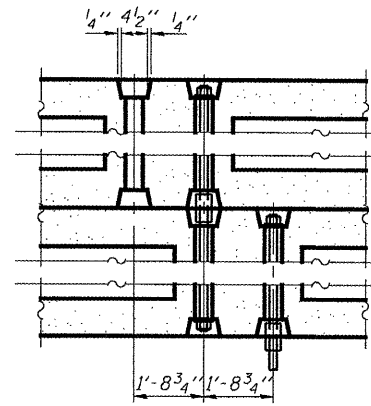
SHEET NO. 2 5 SHEETS	F.A.S. RTE.	SECTION	COUNTY	TOTAL SHEETS	SHEET NO.
	331	(79-102)2009BBR	VERMILION	16	10
FED. ROAD DIST. NO.			ILLINOIS FED. AID PROJECT		
CONTRACT NO. 70749					

STATE OF ILLINOIS
DEPARTMENT OF TRANSPORTATION

6" x 6" x 11 1/2" Blockout to be filled with non-shrink grout as specified in the special provision Concrete Deck Beams (Min. compressive strength at 7 days = 6,000 psi) after beams have been installed. Cost shall be included in the cost of "Precast Prestressed Concrete Deck Beams (21" Depth)".



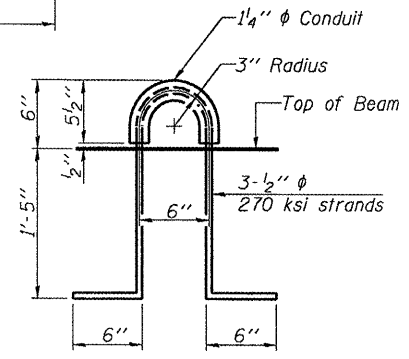
TYPICAL TRANSVERSE TIE ASSEMBLY



BEAM PLAN

NOTES

Prestressing steel shall be uncoated high strength, low relaxation 7-wire strand, Grade 270. The nominal diameter shall be 1/2" and the nominal cross-sectional area shall be 0.153 sq. in. The 1" rods in the transverse tie assembly shall be tightened to a snug fit and the threads set. Pockets on exterior faces of bridge shall be filled with grout after transverse tie assembly is in place.
Reinforcement bars shall conform to ASTM A 706, Grade 60. (See Special Provisions). Two 1/8" fabric adjusting shims of the dimensions shown shall be provided for each bearing pad location.
A minimum 2 1/2" lifting pin shall be used to engage the lifting loops during handling. Corrosion Inhibitor, per Article 1020.05(b)(12) and 1021.06 of the Standard Specifications, shall be used in the concrete for precast prestressed concrete deck beams. Compressive strength of prestressed concrete, f'c, shall be 6000 psi. Compressive strength of prestressed concrete at release, f'ci, shall be 5000 psi.



LIFTING LOOP DETAIL

BILL OF MATERIAL

Precast Prestressed Conc. Deck Bms. (21" depth)	Sq. Ft.	536
---	---------	-----

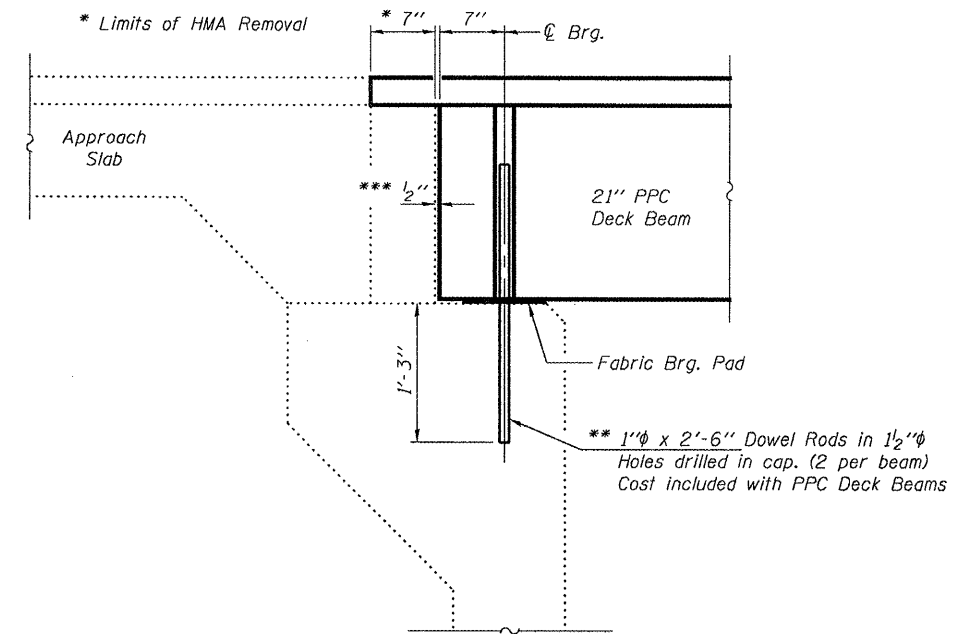
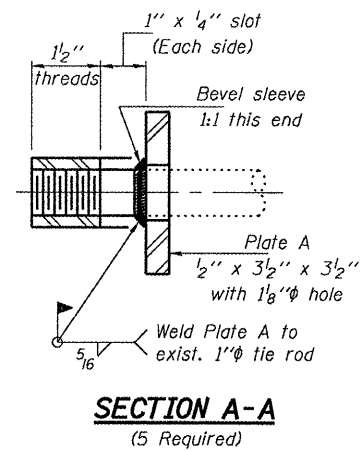
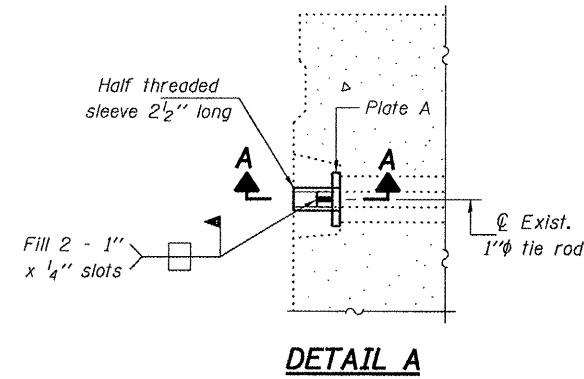
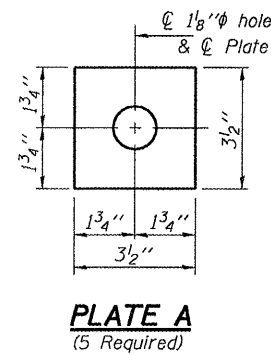
BEAM DETAILS
SN 092-0176

DESIGNED	AJB
CHECKED	GGH
DRAWN	Steffen
CHECKED	AJB GGH

OCTOBER 31, 2008
EXAMINED *Carl P. ...*
PASSED *Ralph E. Anderson*

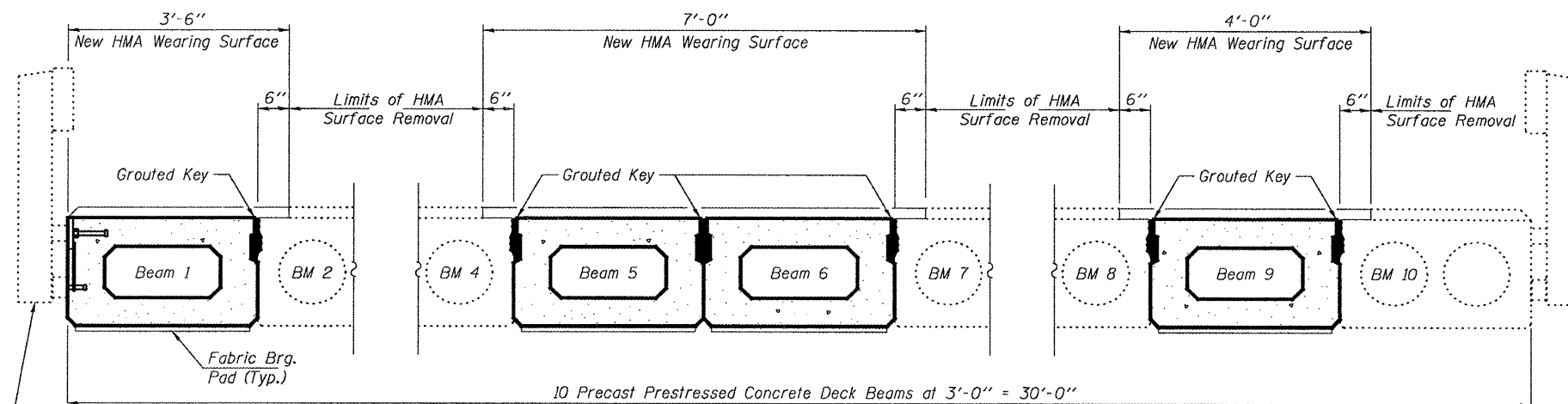
SHEET NO. 3 5 SHEETS	F.A.S. RTE.	SECTION	COUNTY	TOTAL SHEETS	SHEET NO.
	331	(79-102)2009BBR	VERMILION	16	11
FED. ROAD DIST. NO.			ILLINOIS FED. AID PROJECT		
CONTRACT NO. 70749					

STATE OF ILLINOIS
DEPARTMENT OF TRANSPORTATION



** Existing dowel rods are to be burned off, ground flush, and sealed with epoxy prior to placement of new beams. Cost included in Removal of Existing PPC Deck Beams. After beams have been erected holes shall be drilled into cap and dowel rods placed. Dowel holes shall be filled with non-shrink grout to top of beam and allowed to cure a minimum of 24 hours prior to grouting the shear keys.

*** Joint shall be filled with non-shrink grout. Dimension may vary to accommodate tolerance in beam lengths.



Existing Railing to be removed, stored, & re-erected. See sheet 5 of 5 for additional details.

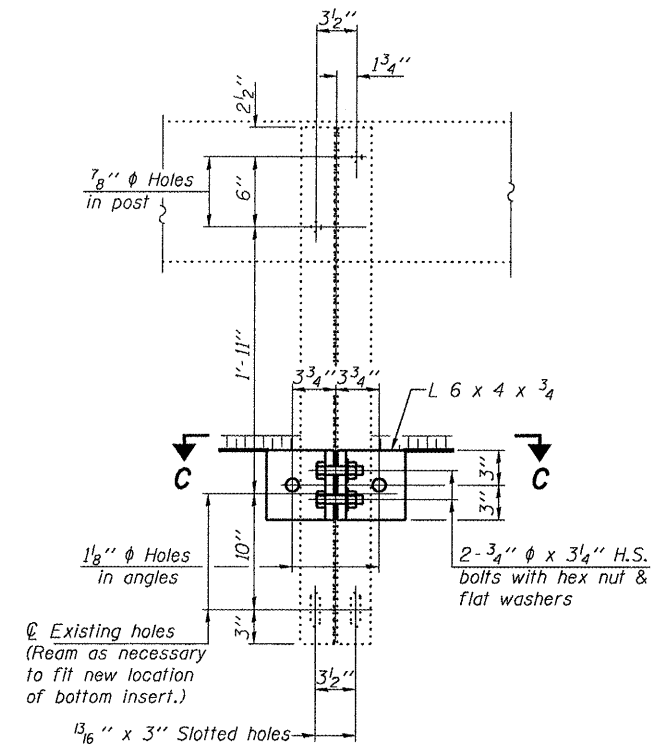
DESIGNED	AJB
CHECKED	GGH
DRAWN	Steffen
CHECKED	AJB GGH

OCTOBER 31, 2008
 EXAMINED *Carl Poyner*
 ENGINEER OF STRUCTURAL SERVICES
 PASSED *Ralph E. Anderson*
 ENGINEER OF BRIDGES AND STRUCTURES

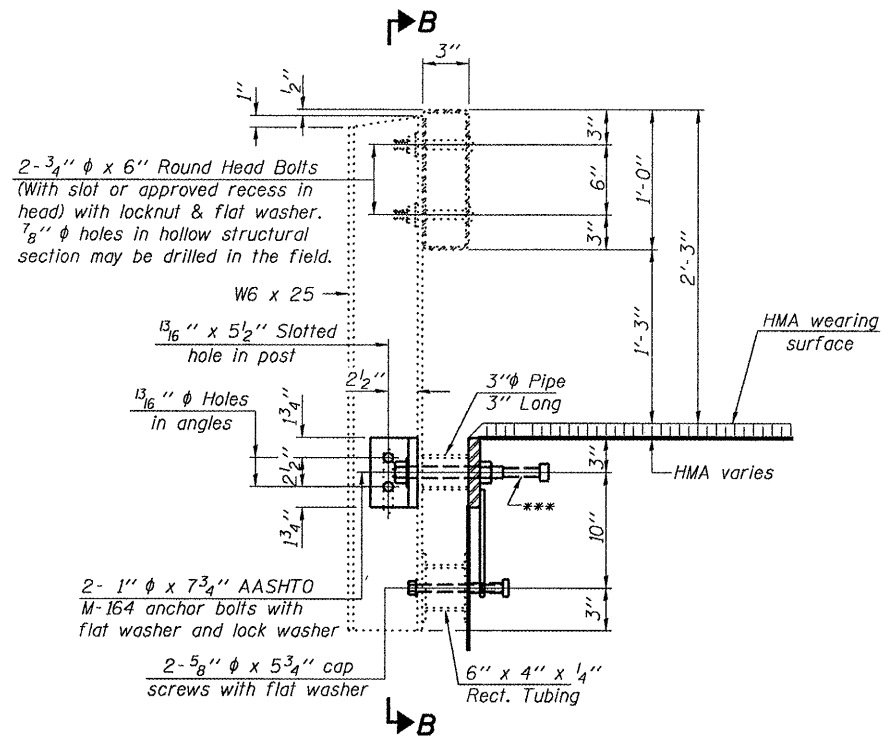
REPAIR DETAILS
SN 092-0176

SHEET NO. 4	F.A.S. RTE.	SECTION	COUNTY	TOTAL SHEETS	SHEET NO.
	331	(79-102)2009BBR	VERMILION	16	12
5 SHEETS	CONTRACT NO. 70749				
FED. ROAD DIST. NO.		ILLINOIS	FED. AID PROJECT		

STATE OF ILLINOIS
DEPARTMENT OF TRANSPORTATION



SECTION B-B



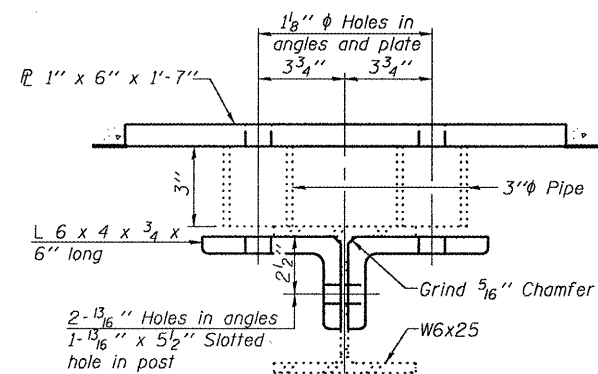
SECTION AT RAILING POST

Notes:
All field drilled holes shall be coated with an approved zinc rich paint before erection.
All steel rail elements shall be galvanized according to Article 509.05 of the Standard Specifications.

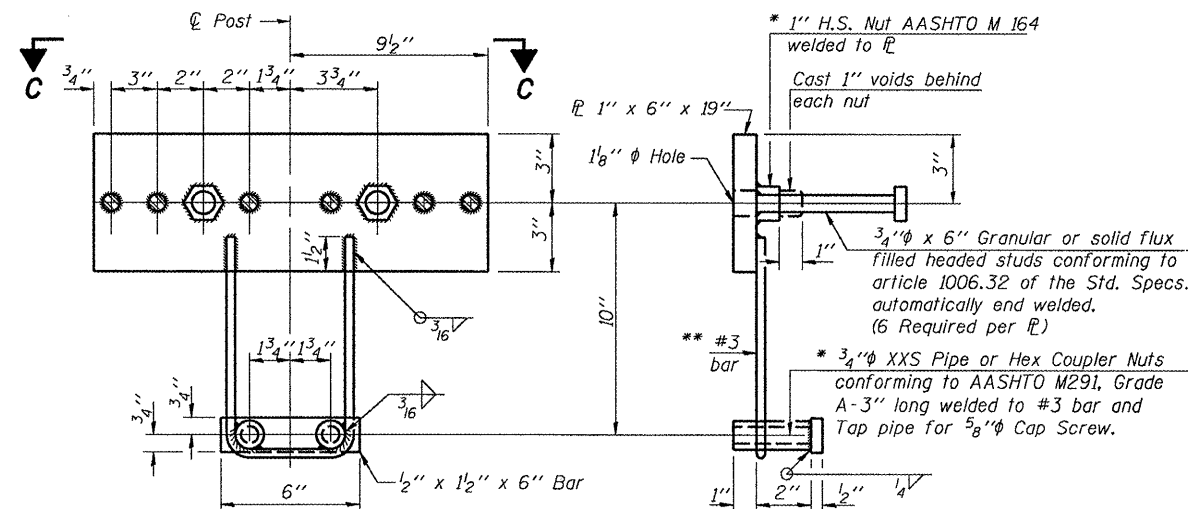
* Threaded areas shall be plugged or blocked off during casting of beam.

** Whenever the lower insert assemblies interfere with strand locations, the #3 bars shall be cut and adjusted in order to allow raising or lowering of the lower inserts. Maximum adjustment not to exceed 1/2 inch.

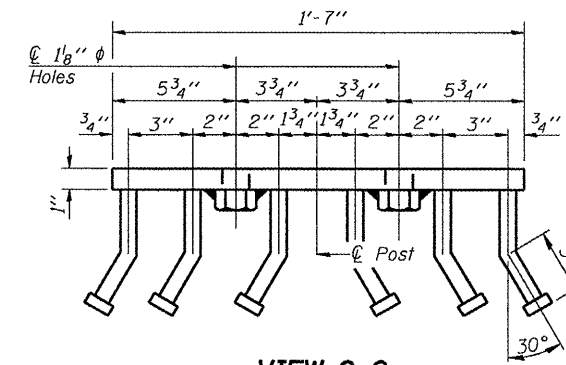
*** The studs of the anchor devices shall be placed below the top reinforcement bars and the outermost longitudinal reinforcement bar shall be placed directly above the studs of the rail post anchor device.



SECTION C-C



ANCHOR DEVICE



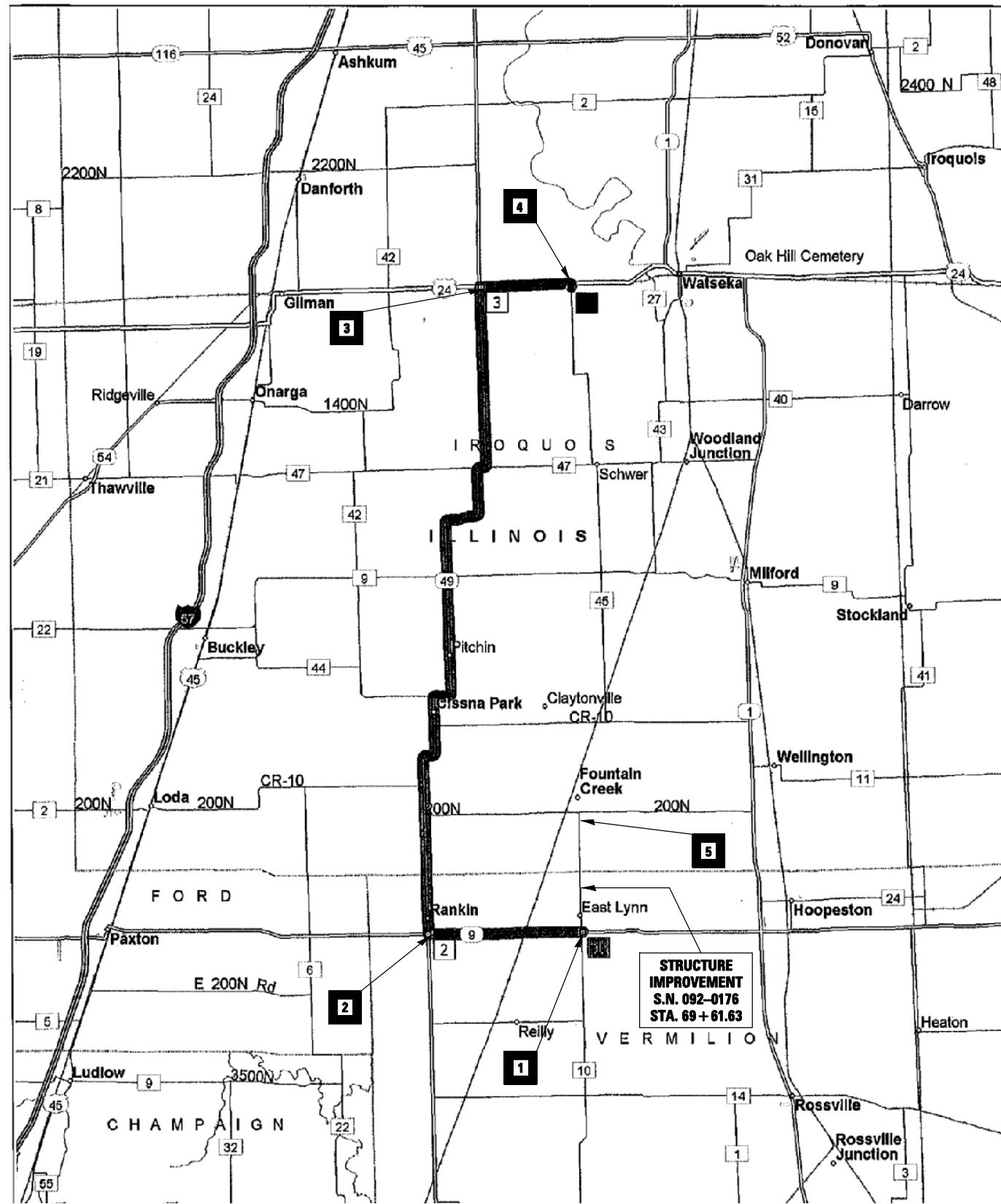
VIEW C-C

DESIGNED	AJB
CHECKED	GGH
DRAWN	Steffen
CHECKED	AJB GGH

OCTOBER 31, 2008
EXAMINED *Carl Perry*
ENGINEER OF STRUCTURAL SERVICES
PASSED *Ralph E. Anderson*
ENGINEER OF BRIDGES AND STRUCTURES

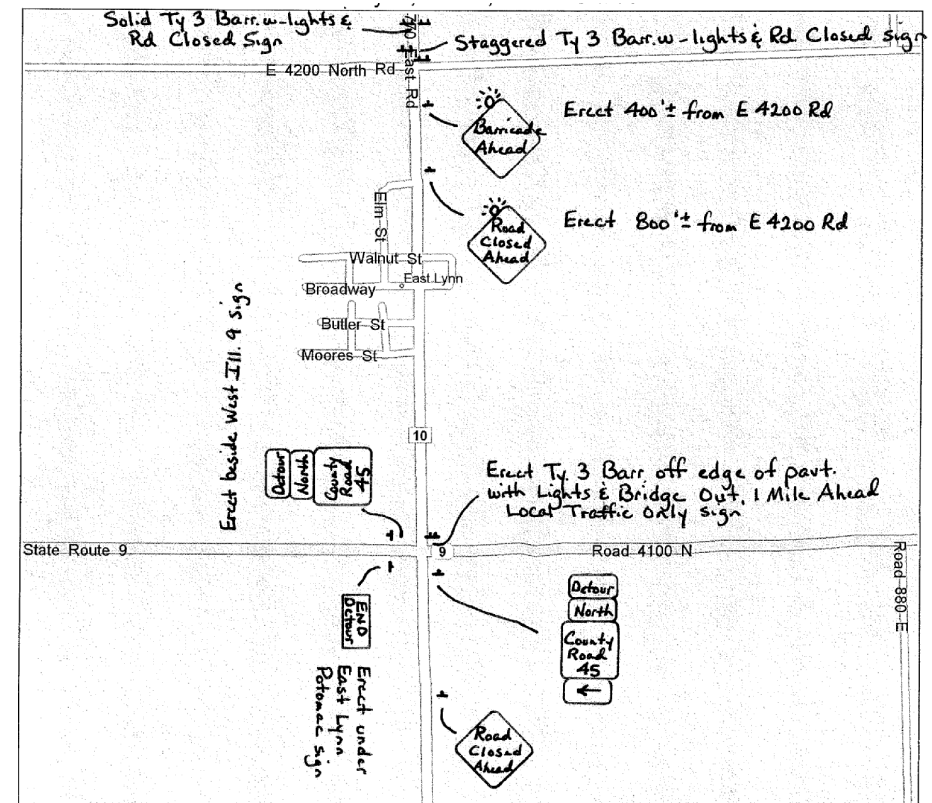
**RAILING DETAILS
SN 092-0176**

SHEET NO. 5 5 SHEETS	F.A.S. RTE.	SECTION	COUNTY	TOTAL SHEETS	SHEET NO.
	331	(79-102)2009BBR	VERMILION	16	13
FED. ROAD DIST. NO.			ILLINOIS FED. AID PROJECT		
CONTRACT NO. 70749					



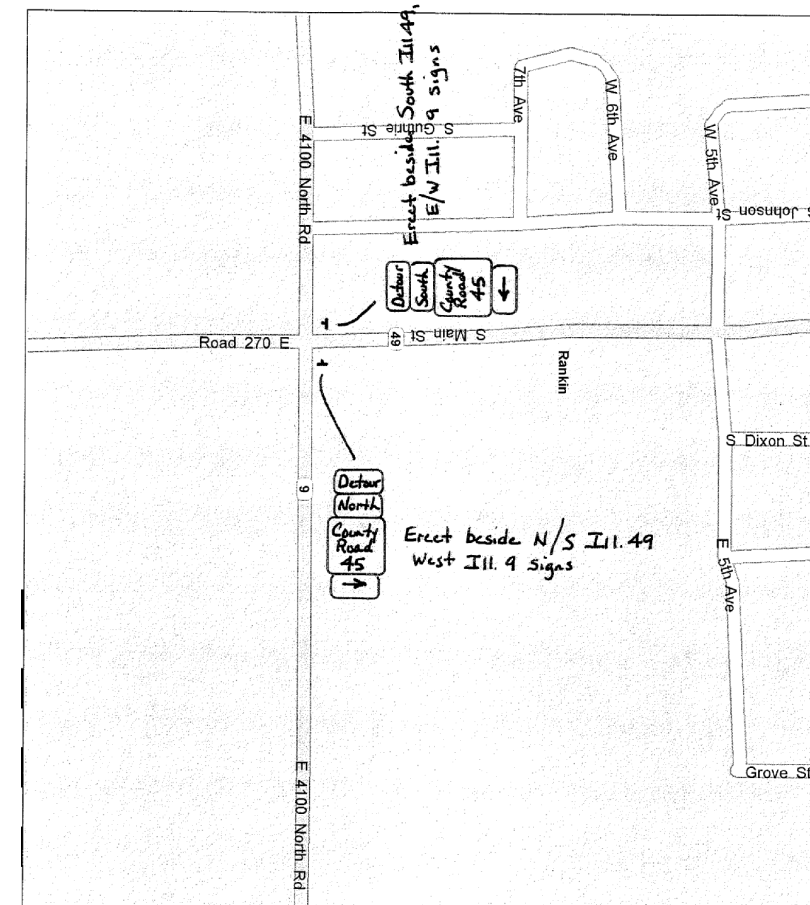
MASTER DETOUR MAP

1



EAST LYNN

2



RANKIN

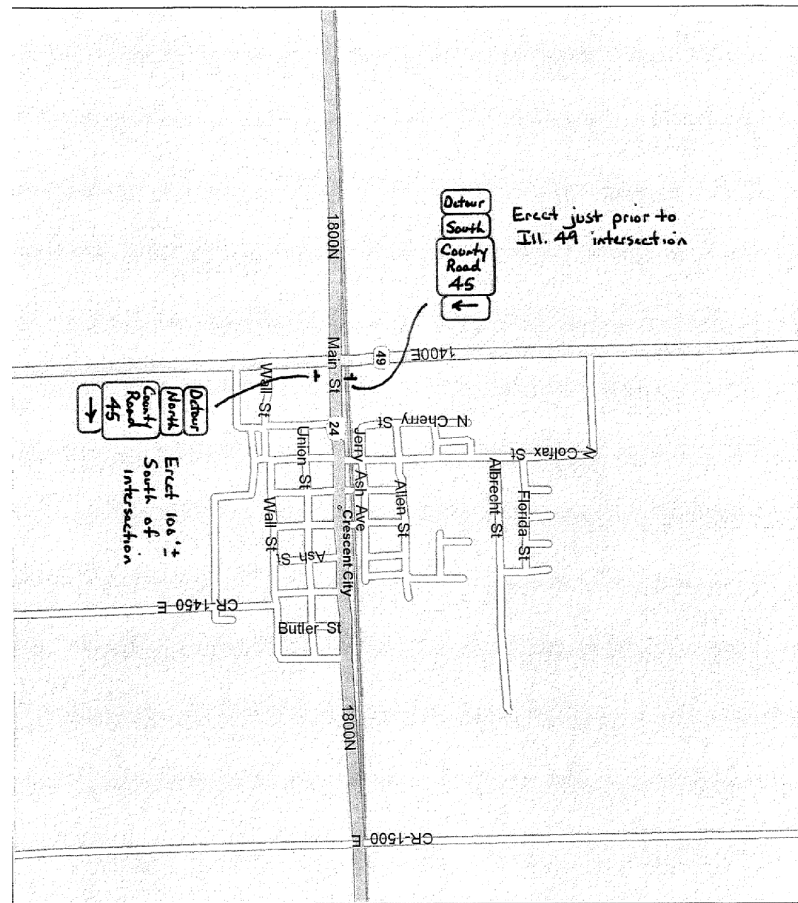
FILE NAME =	USER NAME = shererjm	DESIGNED - JMS	REVISED -
ct:\proj\jects\d570749\cad\sheet\sd570749-shd-details.dgn		DRAWN - JMS	REVISED -
PLOT SCALE = 100.0000' / IN.		CHECKED - JMS	REVISED -
PLOT DATE = 10/16/2008		DATE - 090308	REVISED -

**STATE OF ILLINOIS
DEPARTMENT OF TRANSPORTATION**

ROAD CLOSURE DETOUR DETAIL		
SCALE: N/A	SHEET NO. 1 OF 2 SHEETS	STA. N/A TO STA. N/A

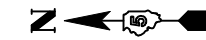
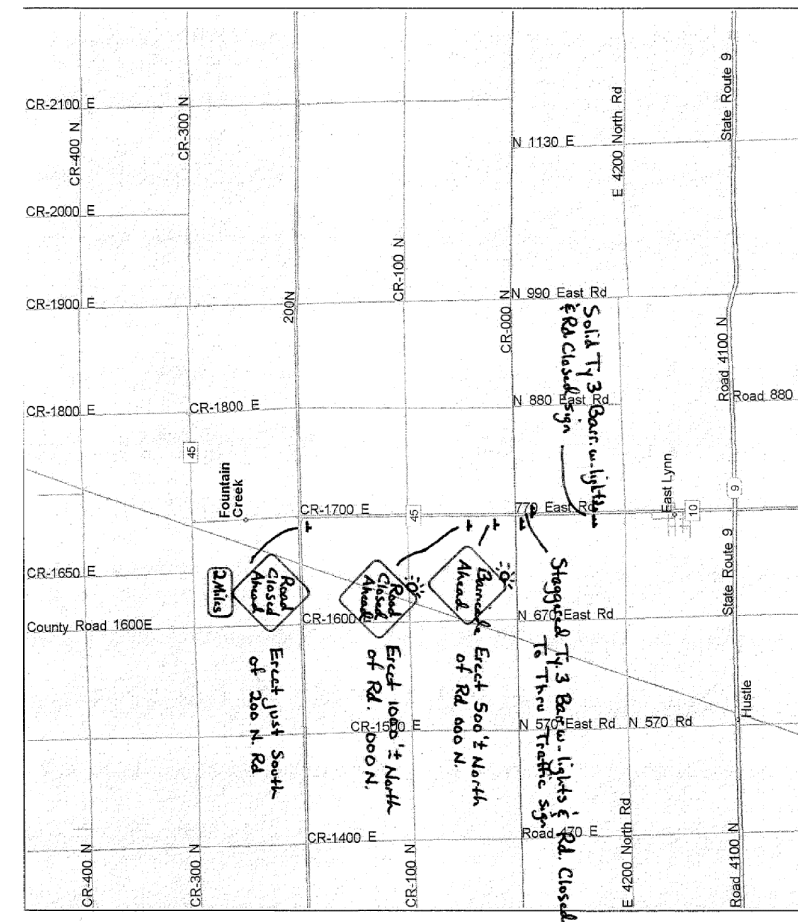
F.A.S. RTE.	SECTION	COUNTY	TOTAL SHEETS	SHEET NO.
331	(79-102)2009BBR	VERMILION	15	14
CONTRACT NO. 70749				
FED. ROAD DIST. NO. ILLINOIS FED. AID PROJECT				

3



CRESCENT CITY

5



EAST LYNN

DETAIL NOTES

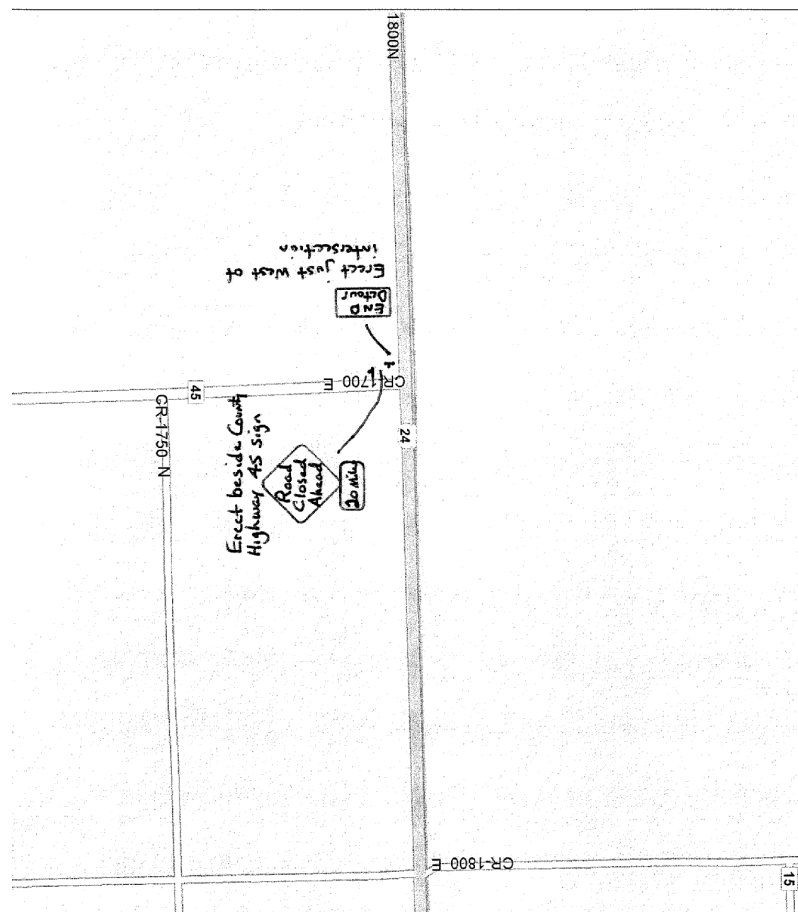
ALL DETOUR SIGN LOCATIONS ARE SUBJECT TO FIELD ADJUSTMENT IN CASE OF CONFLICTS. ANY ADJUSTMENTS WILL BE COORDINATED BY THE ENGINEER, THE CONTRACTOR, AND THE BUREAU OF OPERATIONS (CLARK PIPER) PRIOR TO ROAD CLOSURE.

CMS BOARD PLACEMENT SHALL BE COORDINATED WITH THE ENGINEER AND TRAFFIC CONTROL SUPERVISOR PRIOR TO CONSTRUCTION.

FURNISHING, PLACEMENT AND REMOVAL OF ALL DETOUR SIGNS SHALL BE IN ACCORDANCE WITH THE SPECIAL PROVISION FOR DETOUR SIGNING

REFER TO THE DETAIL FOR TRAFFIC CONTROL & PROTECTION DEVICES (ROAD & SIDEROAD/STREET CLOSURES) FOR ALL OTHER SIGNING AND PLACEMENT NOT SHOWN HEREIN THIS DETAIL

4



IL 24

FILE NAME =	USER NAME = shererjm	DESIGNED - JMS	REVISED -
ct:\projects\d570749\cad\sheet\5\d570749-sh1-details.dgn		DRAWN - JMS	REVISED -
PLOT SCALE = 100.0000' / IN.		CHECKED - JMS	REVISED -
PLOT DATE = 10/10/2008		DATE - 090308	REVISED -

STATE OF ILLINOIS
DEPARTMENT OF TRANSPORTATION

ROAD CLOSURE DETOUR DETAIL

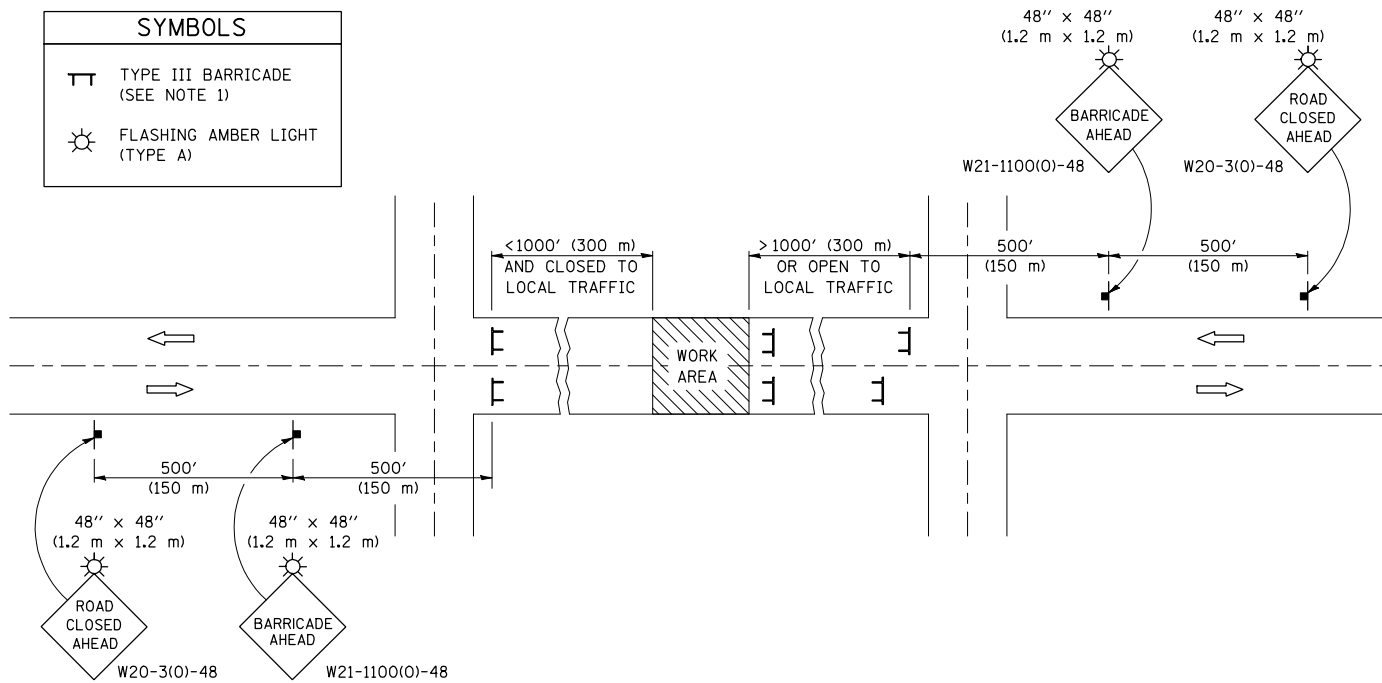
SCALE: N/A SHEET NO. 2 OF 2 SHEETS STA. N/A TO STA. N/A

F.A.S. RTE.	SECTION	COUNTY	TOTAL SHEETS	SHEET NO.
331	(79-102)2009BBR	VERMILION	16	15
CONTRACT NO. 70749				
FED. ROAD DIST. NO. ILLINOIS FED. AID PROJECT				

ROAD CLOSURE

SIDEROAD / STREET CLOSURE

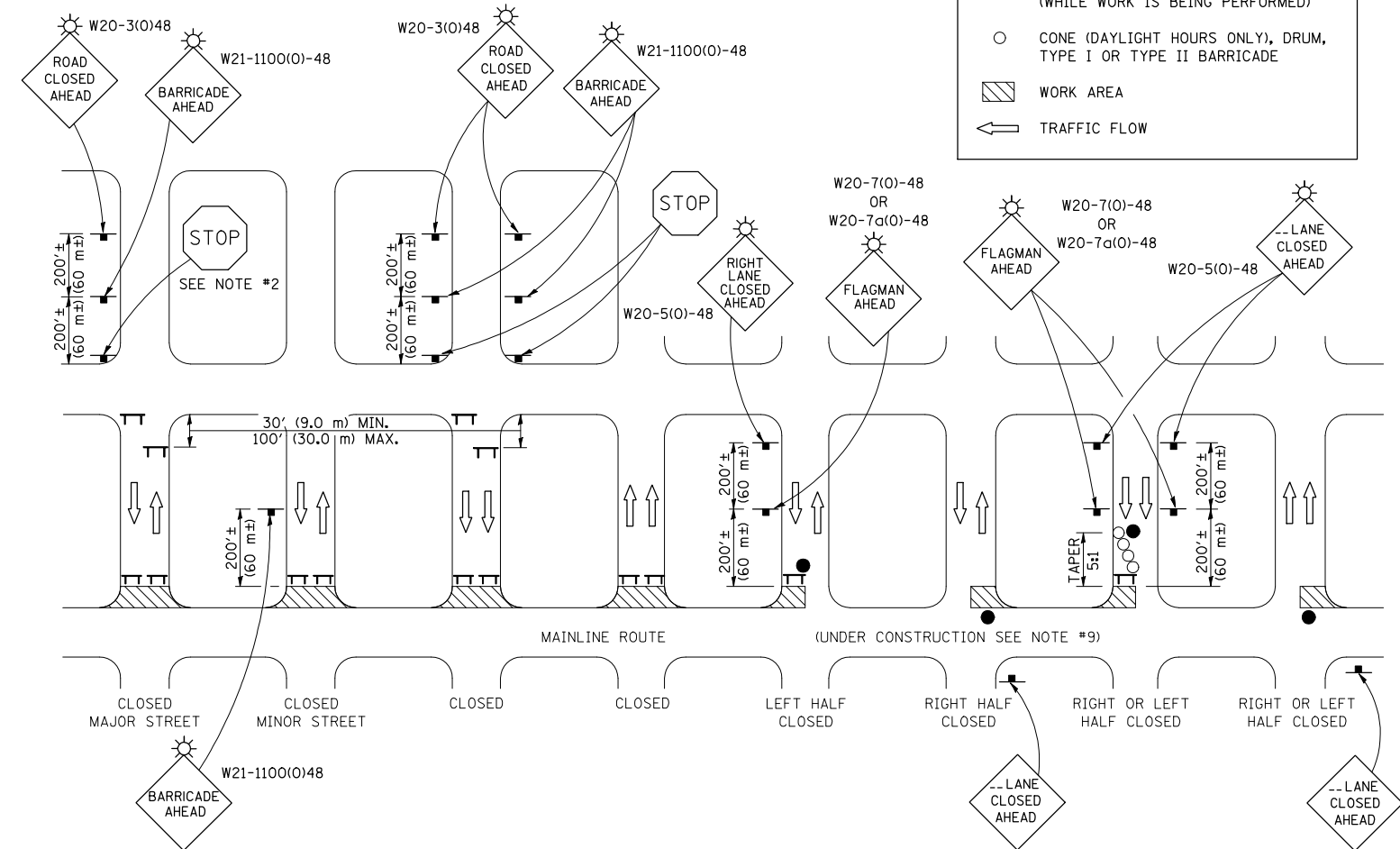
SYMBOLS	
	TYPE III BARRICADE (SEE NOTE 1)
	FLASHING AMBER LIGHT (TYPE A)



GENERAL NOTES

- TYPE III BARRICADES SHALL BE AS SHOWN ON STANDARD 701901 "TYPICAL APPLICATIONS OF TYPE III BARRICADES CLOSING A ROAD". EACH TYPE III BARRICADE SHALL HAVE TWO FLASHING AMBER LIGHTS MOUNTED ABOVE IT.
- IF THE ROAD IS OPEN TO LOCAL TRAFFIC OR EXCEEDS 1000' (300 m), ANOTHER SET OF TYPE III BARRICADES, EQUIPPED AS IN NOTE 1 ABOVE, SHALL BE PLACED AT EACH END OF THE WORK AREA.
- WHEN A STOP CONDITION EXISTS, NO SIGNS ARE REQUIRED IN ADVANCE OF THE "STOP" SIGN WHEN THE ROAD IS CLOSED WITHIN 100' (30 m) OF THE INTERSECTION.
- STANDARD 701901 SHALL APPLY FOR THE PLACEMENT & DESIGN OF TYPE III BARRICADES.
- IF A TYPE III BARRICADE WITH AN ATTACHED SIGN PANEL WHICH MEETS NCHRP 350 IS NOT AVAILABLE, THE SIGNS MAY BE MOUNTED ON AN NCHRP 350 TEMPORARY SIGN SUPPORT DIRECTLY IN FRONT OF THE BARRICADE.
- REFLECTORIZED STRIPING SHALL APPEAR ON BOTH SIDES OF THE TYPE III BARRICADES IF ROAD IS OPEN TO LOCAL TRAFFIC.
- ALL SIGNS SHALL BE POST MOUNTED IF THE CLOSURE TIME EXCEEDS FOUR DAYS.
- A MINIMUM OF TWO FLASHING LIGHTS SHALL BE USED AT NIGHT ON EACH APPROACH IN ADVANCE OF THE WORK AREA. FLASHING LIGHTS SHALL BE INSTALLED ABOVE THE FIRST TWO SIGNS IN THE SERIES.
- LONGITUDINAL DIMENSIONS MAY BE ADJUSTED SLIGHTLY TO FIT FIELD CONDITIONS.
- FORMS BT. 725 AND BT. 726 ARE REQUIRED.
- WHEN A SIDEROAD INTERSECTS THE HIGHWAY ON WHICH WORK IS BEING PERFORMED, ADDITIONAL TRAFFIC DEVICES SHALL BE ERECTED AND PROVIDED AS DIRECTED BY THE ENGINEER.
- AN ADDITIONAL SIGN MAY BE REQUIRED AT A MAJOR INTERSECTING ROAD IN ADVANCE OF THE CLOSURE. THE ADDITIONAL SIGN SHALL GIVE THE DISTANCE TO THE BARRICADE IN MILES OR FRACTIONS OF A MILE.

SYMBOLS	
	TYPE III BARRICADE (SEE NOTE)
	FLASHING LIGHT
	FLAGGER WITH TRAFFIC CONTROL SIGN (WHILE WORK IS BEING PERFORMED)
	CONE (DAYLIGHT HOURS ONLY), DRUM, TYPE I OR TYPE II BARRICADE
	WORK AREA
	TRAFFIC FLOW



GENERAL NOTES

- TYPE III BARRICADES SHALL BE AS SHOWN ON "TYPICAL APPLICATIONS OF TYPE III BARRICADES CLOSING A ROAD". EACH TYPE III BARRICADE SHALL HAVE TWO FLASHING AMBER LIGHTS MOUNTED ABOVE IT.
- WHERE A STOP CONDITION EXISTS, AS SHOWN ABOVE, WARNING SIGNS MAY BE OMITTED IN ADVANCE OF THE "STOP" SIGN.
- STANDARD 702001 SHALL APPLY FOR THE PLACEMENT & MANUFACTURE OF TYPE III BARRICADES.
- ALL SIGNS SHALL BE POST MOUNTED IF THE CLOSURE TIME EXCEEDS FOUR DAYS.
- ONE FLASHING LIGHT IS REQUIRED ABOVE EACH ADVANCE WARNING SIGN DURING HOURS OF DARKNESS.
- LONGITUDINAL DIMENSIONS MAY BE ADJUSTED SLIGHTLY TO FIT FIELD CONDITIONS.
- FORMS BT 725 AND BT 726 ARE REQUIRED.
- THE MAINLINE ROUTE TEMPORARY TRAFFIC CONTROL SHALL BE IN ACCORDANCE WITH THE PLANS, SPECIAL PROVISIONS AND STANDARD SPECIFICATIONS.
- THIS WORK WILL NOT BE PAID FOR SEPARATELY BUT SHALL BE CONSIDERED INCLUDED IN THE VARIOUS PAY ITEMS INVOLVING THE RECONSTRUCTION OF ALL APPLICABLE SIDE STREETS AND NO ADDITIONAL COMPENSATION WILL BE ALLOWED.

Note: All dimensions are in INCHES (millimeters) unless otherwise shown.

FILE NAME =	USER NAME = shererjm	DESIGNED -	REVISED - 11/06
ct:\projects\d570749\cadsheets\d570749-sh1-details.dgn		DRAWN -	REVISED - 12/07
	PLOT SCALE = 100.0000' / IN.	CHECKED -	REVISED -
	PLOT DATE = 10/10/2008	DATE -	REVISED -

STATE OF ILLINOIS
DEPARTMENT OF TRANSPORTATION

TRAFFIC CONTROL & PROTECTION DEVICES
(ROAD & SIDEROAD/STREET CLOSURES)

SCALE: SHEET NO. OF SHEETS STA. TO STA.

DISTRICT 5 DETAIL NO. 7020000

F.A.S. RTE.	SECTION	COUNTY	TOTAL SHEETS	SHEET NO.
331	(79-102)2009BBR	VERMILION	16	16
FED. ROAD DIST. NO. ILLINOIS FED. AID PROJECT			CONTRACT NO. 70018	