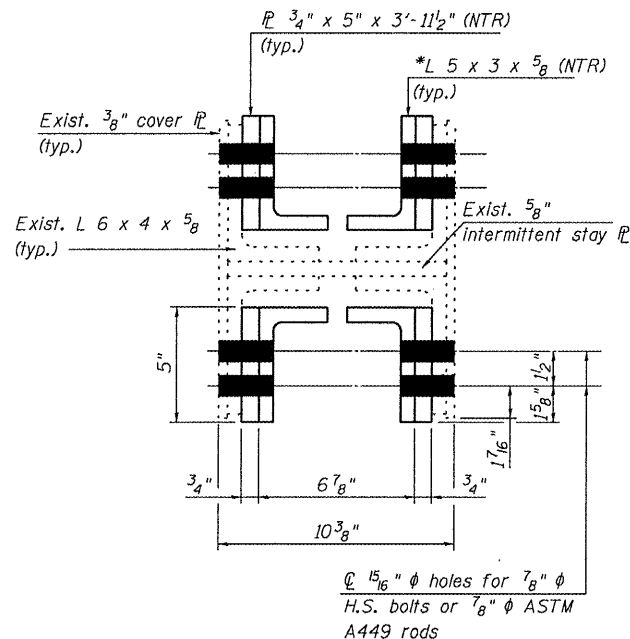
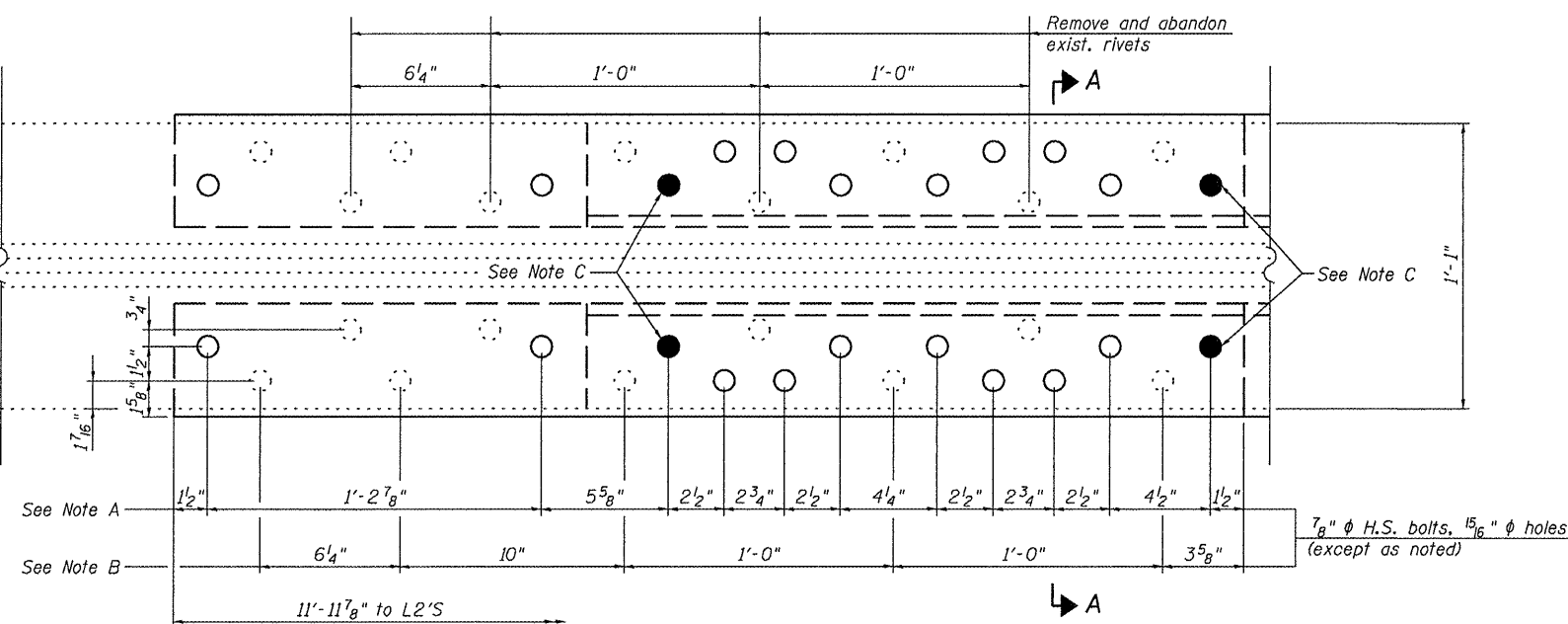


STATE OF ILLINOIS
DEPARTMENT OF TRANSPORTATION



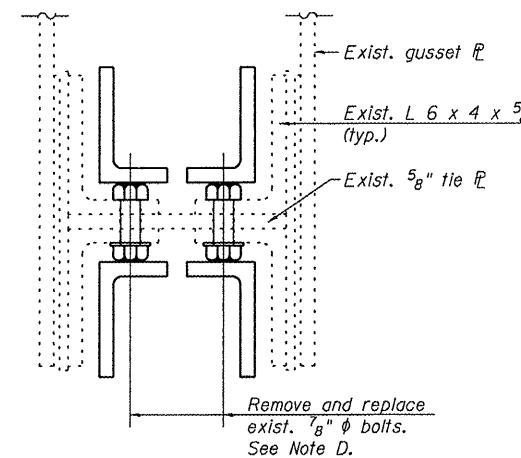
SECTION A-A

(See Section B-B for details of threaded rods)

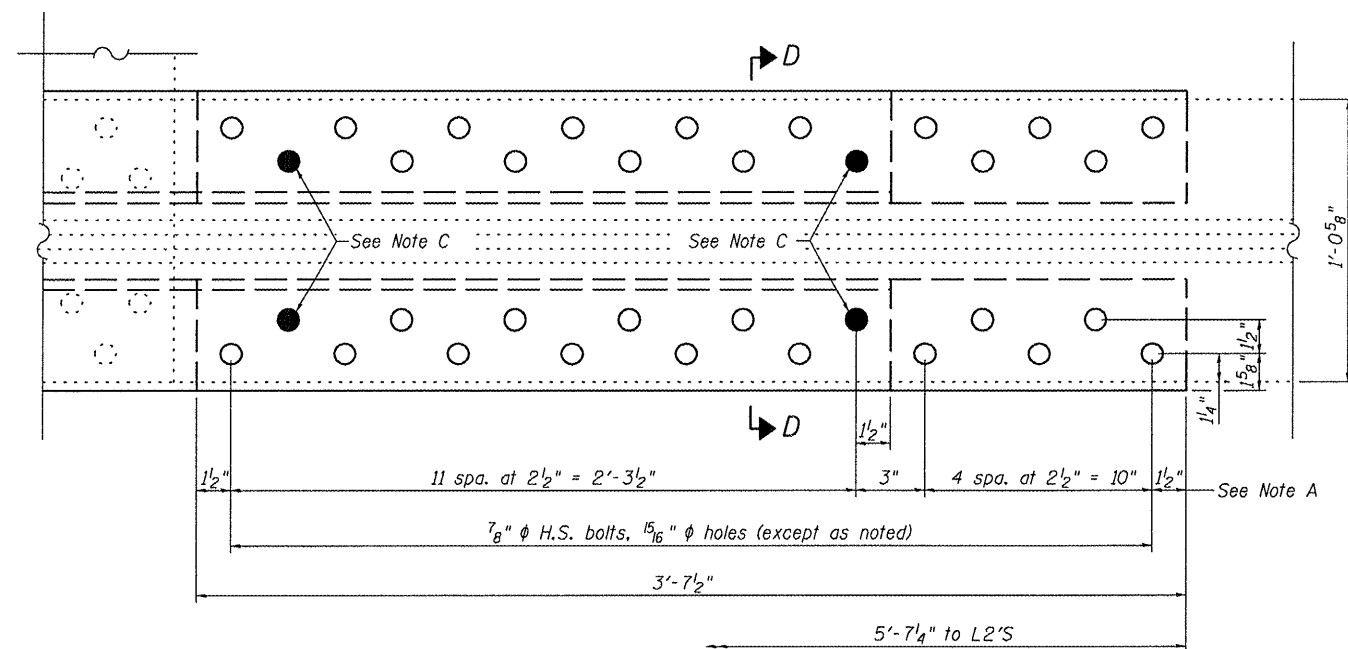


DETAIL A

(● indicates threaded rod)

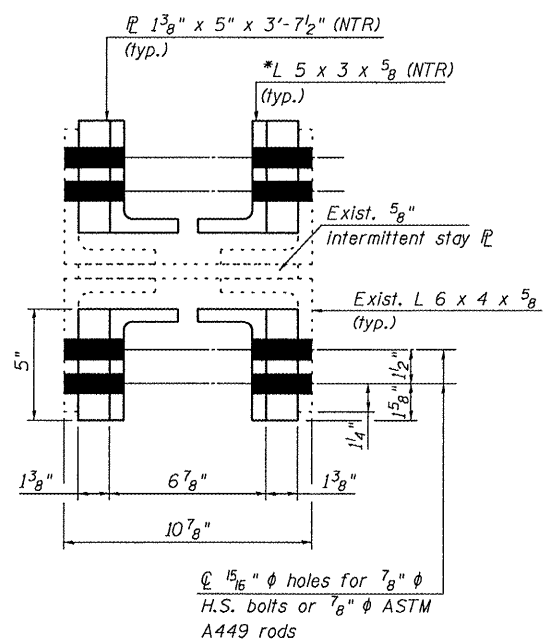


SECTION C-C



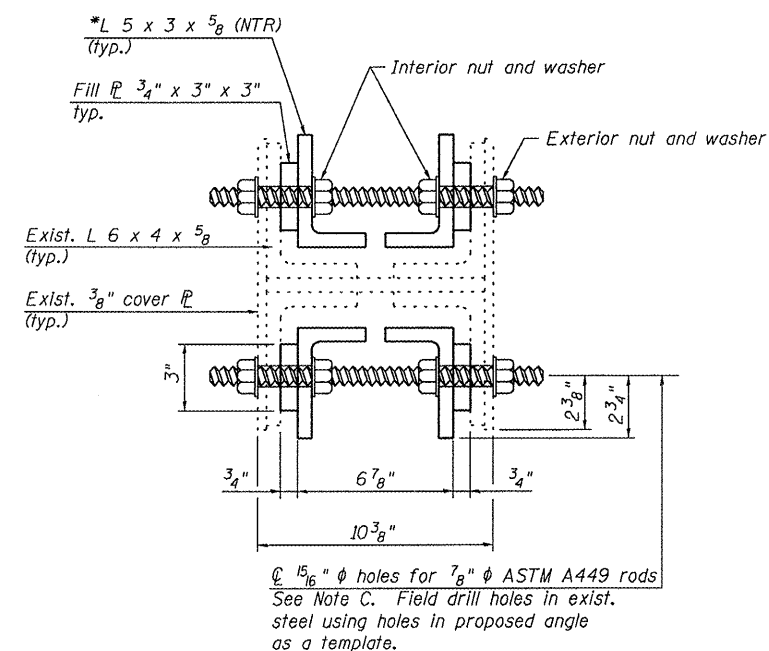
DETAIL B

(● indicates threaded rod)



SECTION D-D

(See Section B-B for details of threaded rods)



SECTION B-B

SPAN 4 TRUSS CHORD
STRENGTHENING DETAILS
ILLINOIS ROUTES 100 & 106 OVER
ILLINOIS RIVER
PUBLIC WATERS

DESIGNED - CEH
CHECKED - SDS
DRAWN - DLH
CHECKED - CEH, SDS

WHKS & CO.
ENGINEERING
2018 KINGSMILL CT.,
SPRINGFIELD, IL
(217) 483-9457
DESIGN FIRM #184001036

* Proposed L shall be fabricated from L 5 x 3 1/2 x 5/8. In lieu of the L 5 x 3 1/2 x 5/8 the Contractor may fabricate the proposed section from 5/8 inch thick PL's having the same minimum material requirements specified for the L's and joined with a complete joint penetration groove weld ground flush. Furnishing and fabricating the proposed section from welded PL's shall not be at additional cost to the Department.

Note:
Work this sheet with sheet 11 of 25.

SHEET NO. 12 OF 25 SHEETS	F.A.P. RTE. 757	SECTION 20BR-2	COUNTY SCOTT/PIKE	TOTAL SHEETS 30	SHEET NO. 12
	SN 086-0001		CONTRACT NO. 72C39		
FED. ROAD DIST. NO. -		ILLINOIS FED. AID PROJECT			