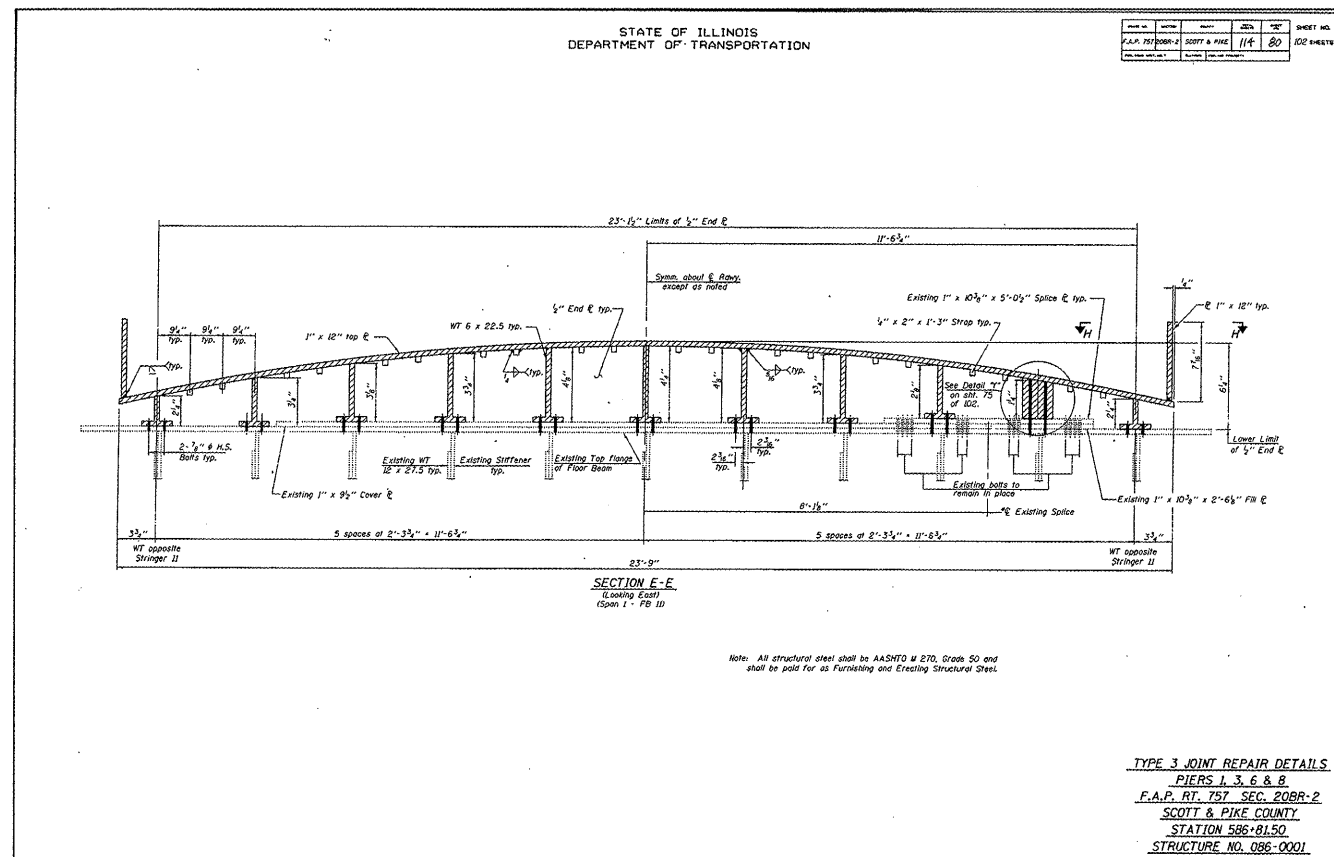
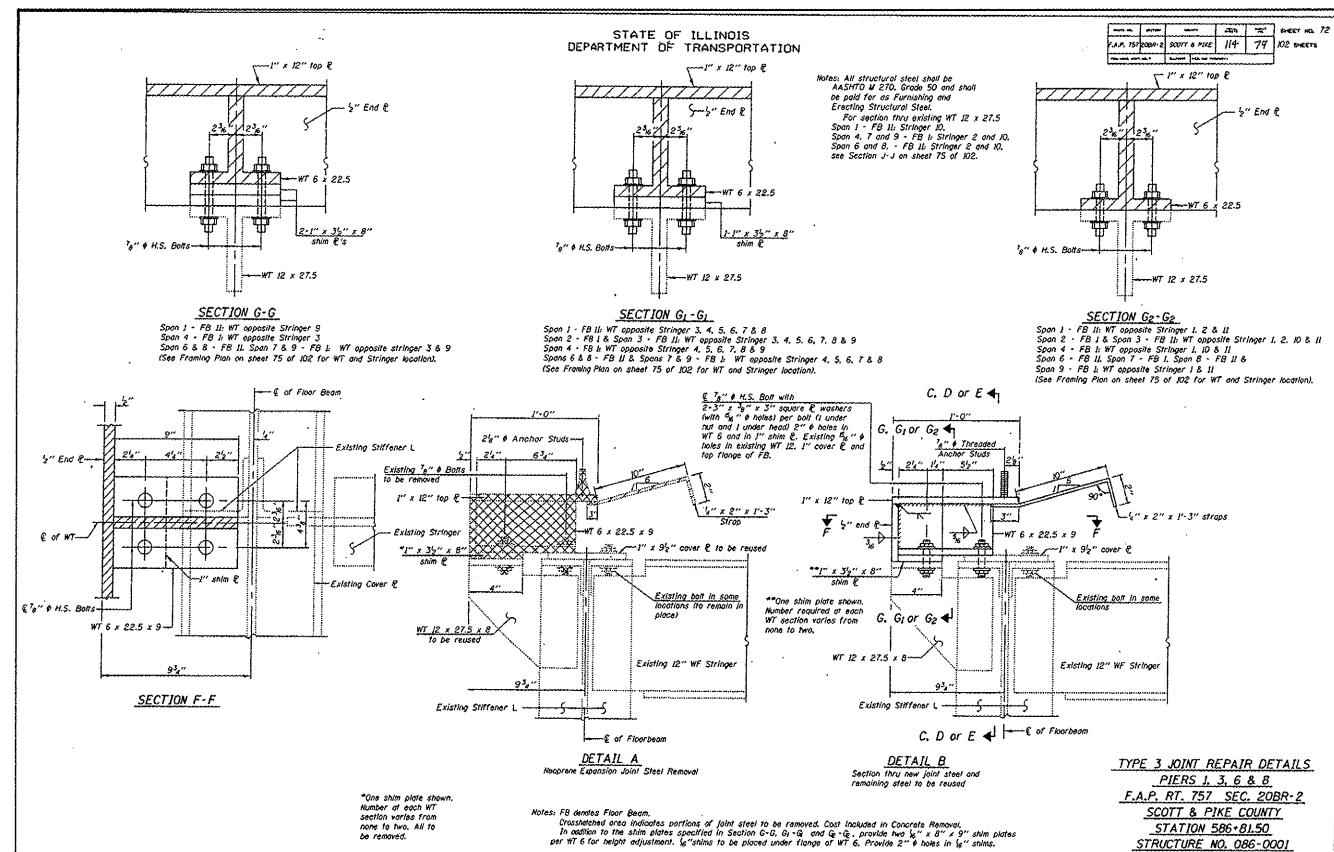
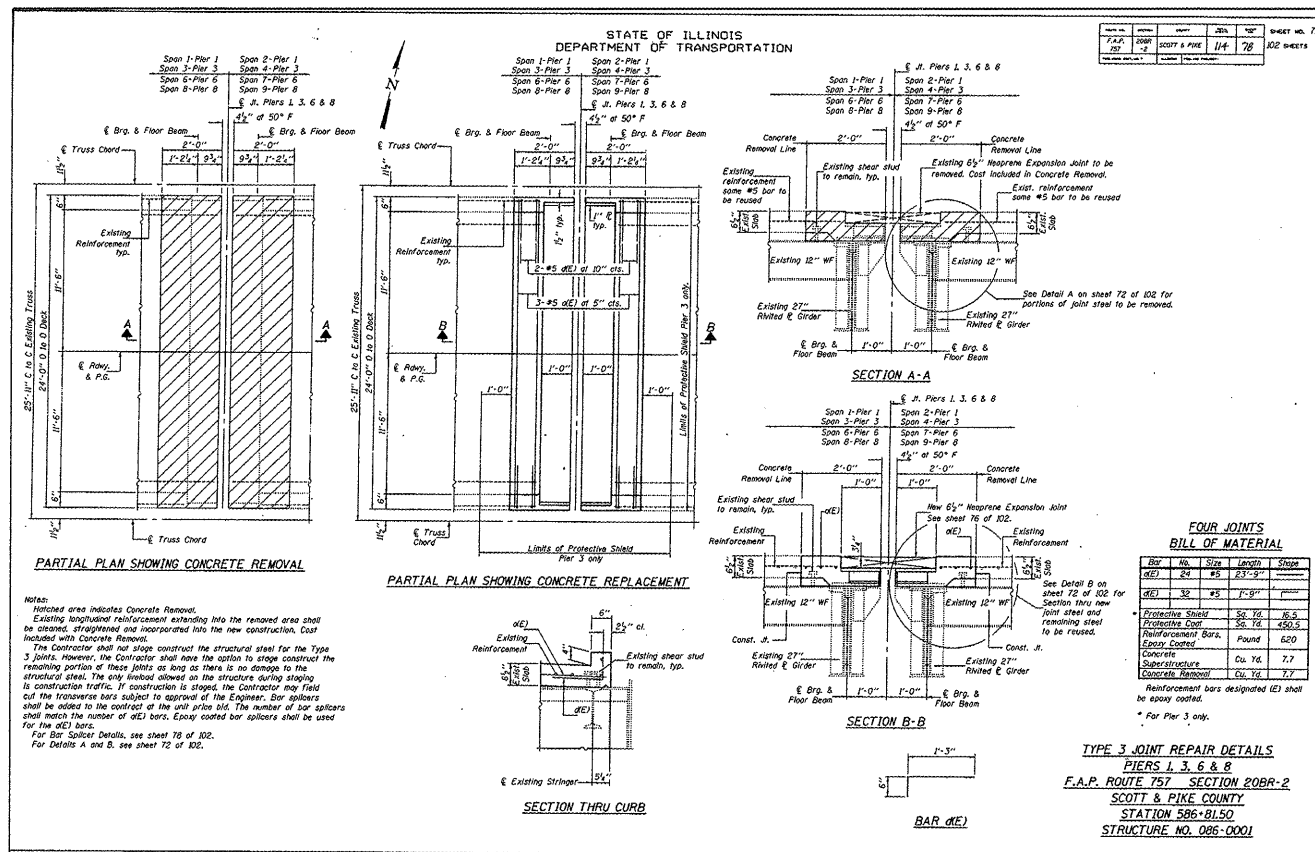


STATE OF ILLINOIS
DEPARTMENT OF TRANSPORTATION



EXISTING EXPANSION JOINT DETAILS

FOR INFORMATION ONLY

EXISTING BRIDGE DETAILS
ILLINOIS ROUTES 100 & 106 OVER
ILLINOIS RIVER
PUBLIC WATERS

SHEET NO. 20 OF 25 SHEETS	F.A.P. RTE.	SECTION	COUNTY	TOTAL SHEETS	SHEET NO.
	757	20BR-2	SCOTT/PIKE	30	23
SN 086-0001			CONTRACT NO. 72C39		
FED. ROAD DIST. NO. ILLINOIS FED. AID PROJECT					