

F.A.P. RTE.	SECTION	COUNTY	TOTAL SHEETS	SHEET NO.
824	(16-2,19X-2)RS-1,19B,19BR	•	52	1
FED. ROAD DIST. NO.	ILLINOIS	CONTRACT NO. 74157		

• COLES/CUMBERLAND

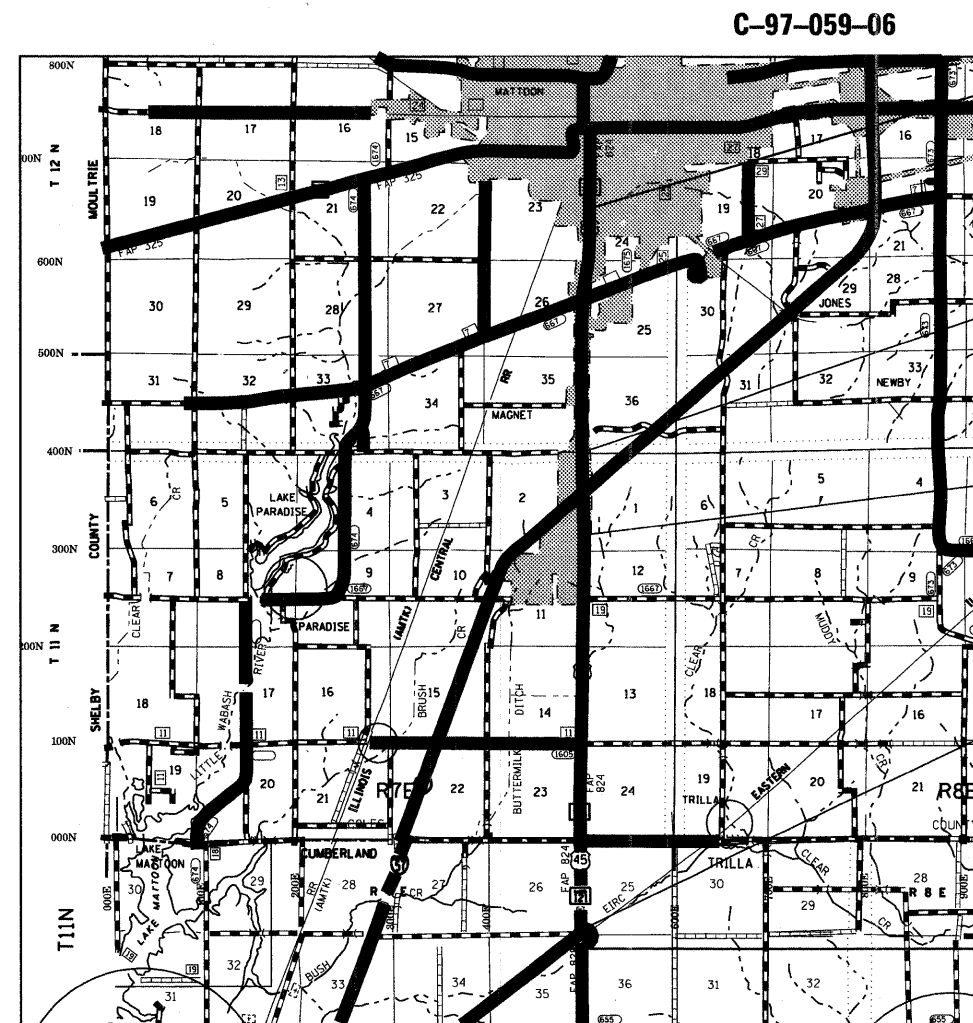
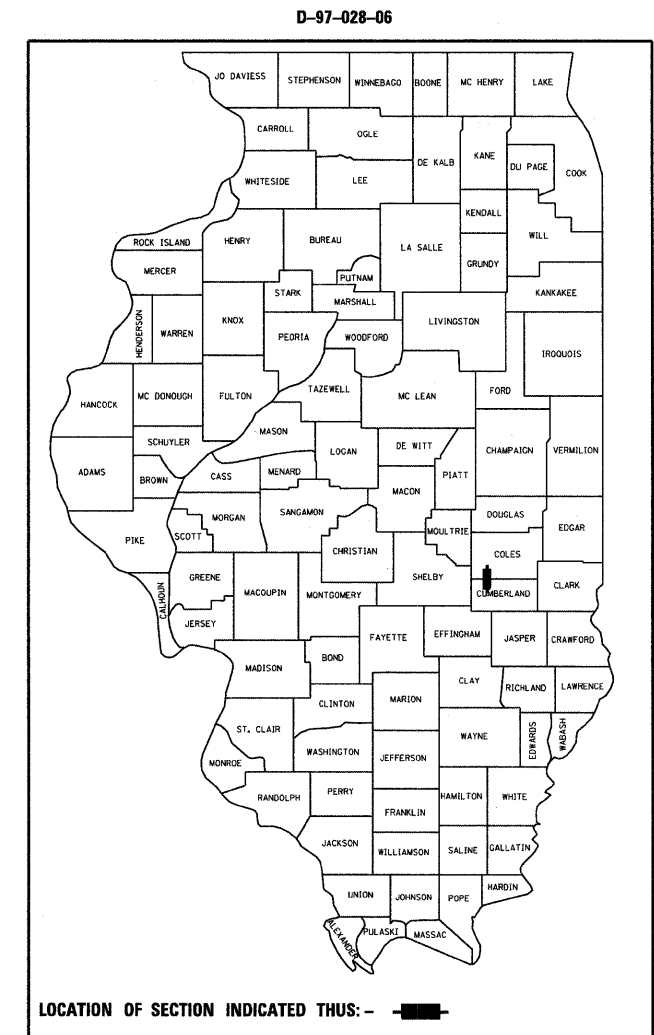
STATE OF ILLINOIS  
DEPARTMENT OF TRANSPORTATION  
DIVISION OF HIGHWAYS

**PROPOSED  
HIGHWAY PLANS**

FAP ROUTE 824 (US 45)  
SECTION (16-2,19X-2)RS-1,19B,19BR  
PROJECT : F-0824(017)  
HMA RESURFACING/BOX CULVERT REPLACEMENT  
CUMBERLAND & COLES COUNTIES

FOR INDEX OF SHEETS, SEE SHEET NO. 2

2007 ADT = 7200



STA 1418+47  
NORTH END OF PROJECT

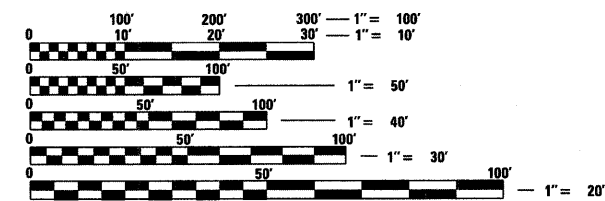
STATION EQUATION  
STA 21+50 BK =  
STA 1292+98 AH

STATION EQUATION  
STA 1242+28.9 BK =  
STA 72+19.1 AH

STATION EQUATION  
STA 1024+47.2 BK =  
STA 1025+05.3 AH

COLES COUNTY  
CUMBERLAND COUNTY STA 1073+85

STA 1015+10  
SOUTH END OF PROJECT



FULL SIZE PLANS HAVE BEEN PREPARED USING STANDARD ENGINEERING SCALES. REDUCED SIZED PLANS WILL NOT CONFORM TO STANDARD SCALES. IN MAKING MEASUREMENTS ON REDUCED PLANS, THE ABOVE SCALES MAY BE USED.

J.U.L.I.E.  
JOINT UTILITY LOCATION INFORMATION FOR EXCAVATION  
1-800-892-0123  
OR 811

PROJECT ENGINEER: MARK DAUGHERTY  
PROJECT MANAGER: JOYCE HEMMEN

CONTRACT NO. 74157

TOTAL LENGTH OF PROJECT = 40,278.9 FT 7.63 MILES



STATE OF ILLINOIS  
DEPARTMENT OF TRANSPORTATION  
DIVISION OF HIGHWAYS

SUBMITTED October 17, 2008

Regan K. Driskell  
DEPUTY DIRECTOR OF HIGHWAYS, REGION ENGINEER

December 5, 2008  
Eric E. Horn  
Interim ENGINEER OF DESIGN AND ENVIRONMENT

December 5, 2008  
Christine M. Reed  
DIRECTOR OF HIGHWAYS, CHIEF ENGINEER

**PRINTED BY THE AUTHORITY  
OF THE STATE OF ILLINOIS**