

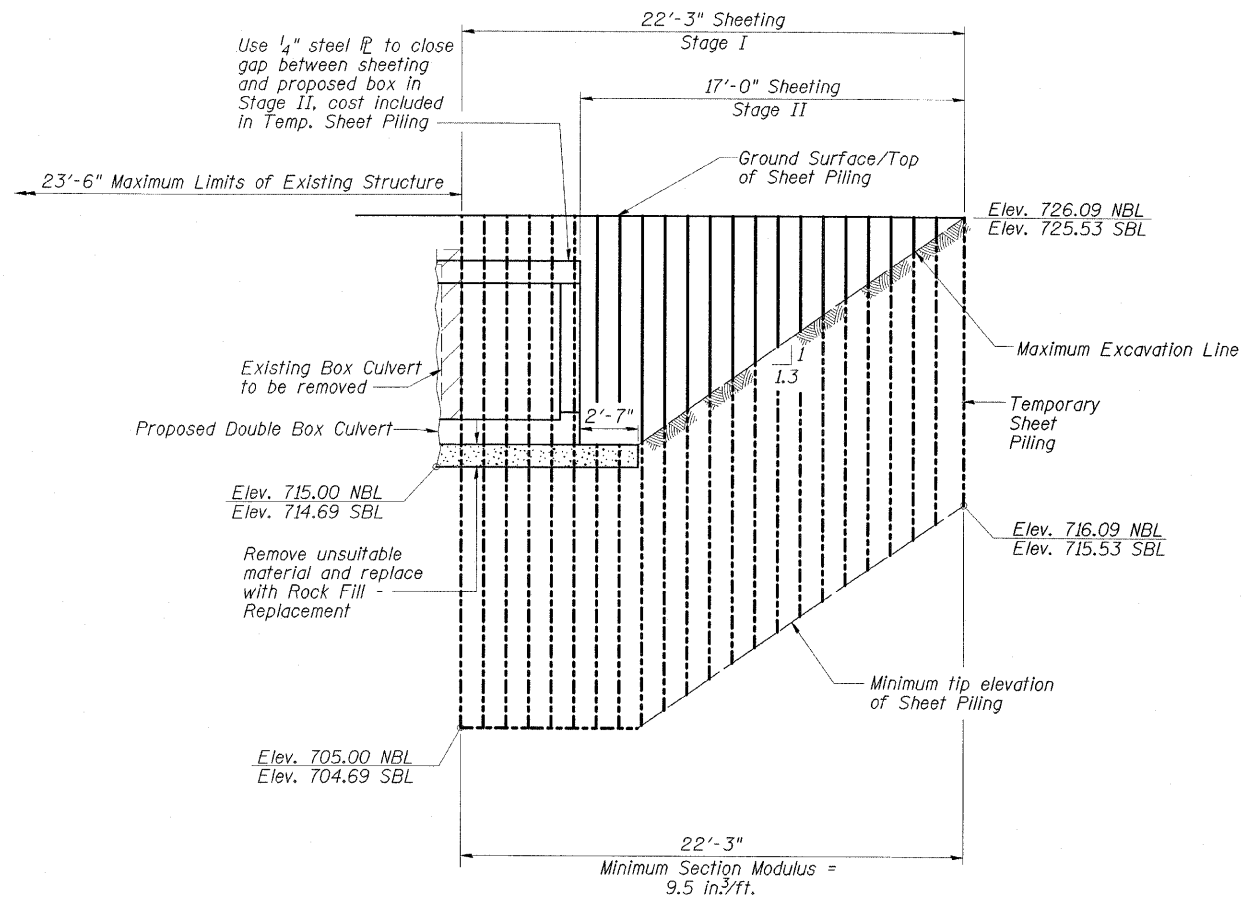
STATE OF ILLINOIS  
DEPARTMENT OF TRANSPORTATION

ROUTE NO.	SECTION	COUNTY	SHEETS	SHEET	SHEET NO.
FAP 824	*	COLES	52	38	9 SHEETS
FED. ROAD DIST. NO.		ILLINOIS	FED. AID PROJ. NO.		
			*16-2, 19X-2)RS-1, 19B, 19BR		

Contract #74157

TEMPORARY SHEET PILING NOTES

- If the Contractor chooses to alter the temporary cantilevered sheet piling design requirements shown on the plans, a design submittal including plan details and calculations will be required for review and acceptance by the Engineer.



TEMPORARY SHEET PILING

(To be constructed parallel to centerline of lanes on each side)

STAGE CONSTRUCTION DETAILS  
US 45 OVER KICKAPOO CREEK  
FAP ROUTE 824  
SECTION (16-2, 19X-2)RS-1, 19B, 19BR  
COLES COUNTY  
STATION 1381+22.50  
STRUCTURE NO. 015-2023

**ESCA**  
CONSULTANTS, INC.

DESIGNED BY:	DAJ	07/08
DRAWN BY:	HAS	07/08
CHECKED BY:	ELH	09/08
APPROVED BY:	RDP	09/08