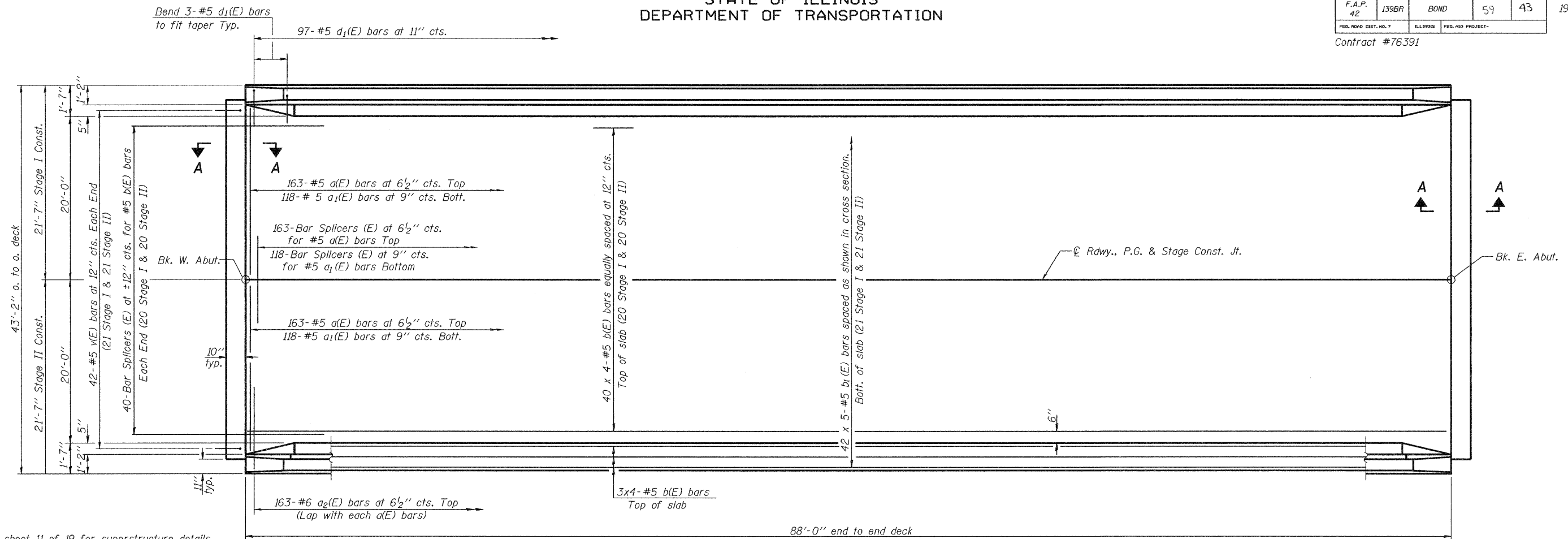


STATE OF ILLINOIS  
DEPARTMENT OF TRANSPORTATION

ROUTE NO.	SECTION	COUNTY	TOTAL SHEETS	SHEET NO.	SHEET NO. 10 19 SHEETS
F.A.P. 42	139BR	BOND	59	43	
FED. ROAD DIST. NO. 7		ILLINOIS	FED. AID PROJECT-		

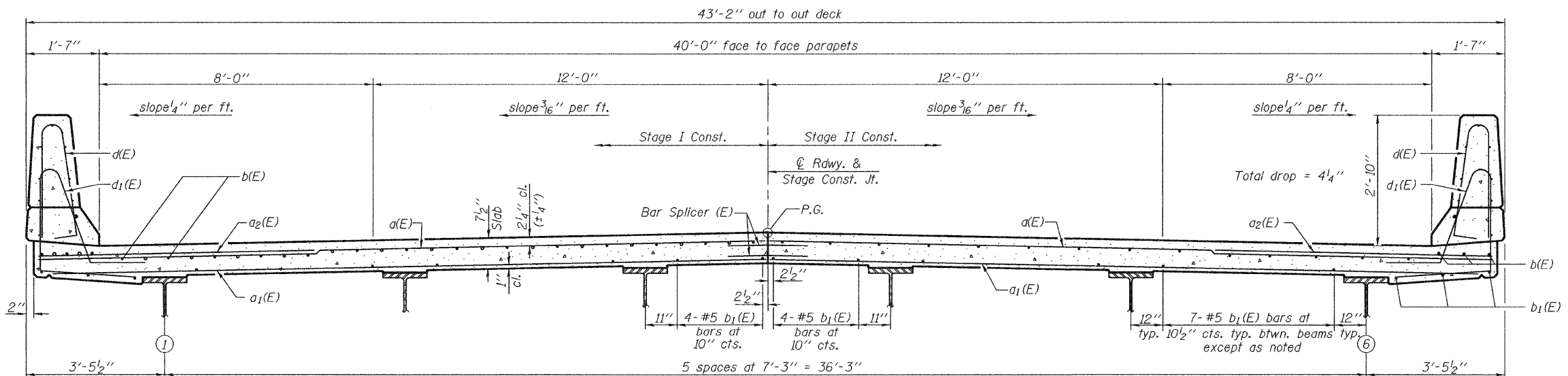
Contract #76391



Notes:  
See sheet 11 of 19 for superstructure details and Bill of Material.  
Bars indicated thus 20 x 3-#5 etc. indicates 20 lines of bars with 3 lengths per line.  
See sheet 11 of 19 for parapet reinforcement.

PLAN

**MIN. BAR LAPS**  
#5 bar = 2'-2"



CROSS SECTION  
(Looking East)

DESIGNED	Phillip R. Litchfield
CHECKED	Nick R. Barnett
DRAWN	R. Sommer
CHECKED	P.R.L./N.R.B.

November 7, 2008  
EXAMINED *Thomas J. Domagalaki*  
ENGINEER OF BRIDGE DESIGN  
PASSED *Ralph E. Anderson*  
ENGINEER OF BRIDGES AND STRUCTURES

**SUPERSTRUCTURE**  
F.A.P. ROUTE 42 - SECTION 139BR  
BOND COUNTY  
STATION 2049+33.51  
STRUCTURE NO. 003-0061