

F.A.P. RTE.	SECTION	COUNTY	TOTAL SHEETS	SHEET NO.
10	410BR-1	GREENE	37	1
FED. ROAD DIST. NO.	ILLINOIS	CONTRACT NO. 76B58		

\*37+13=50

STATE OF ILLINOIS  
DEPARTMENT OF TRANSPORTATION  
DIVISION OF HIGHWAYS

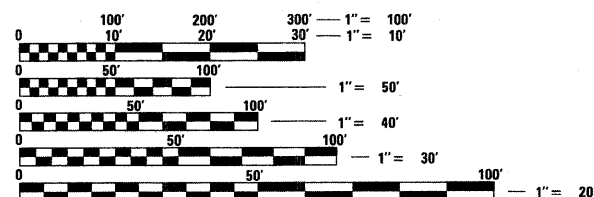
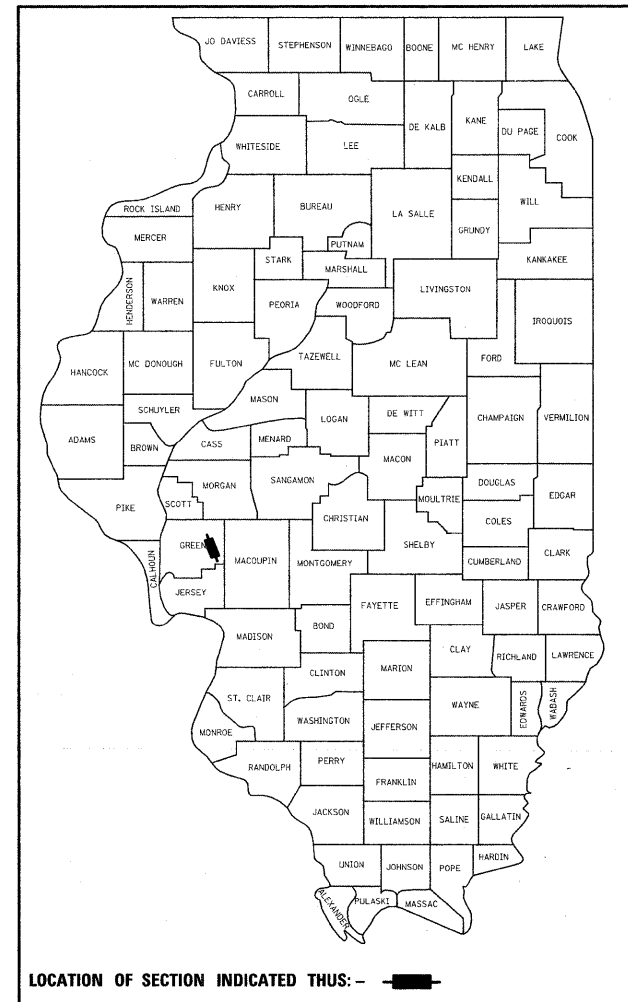
**PROPOSED  
HIGHWAY PLANS**

FAP ROUTE 10 (IL 267)  
SECTION 410BR-1  
PROJECT: *BRF-0010(076)*  
GREENE COUNTY  
REPLACEMENT OF THE STRUCTURE  
CARRYING IL 267 OVER TAYLOR CREEK

C-98-024-08

FOR INDEX OF SHEETS SEE SHEET 2

D-98-030-08

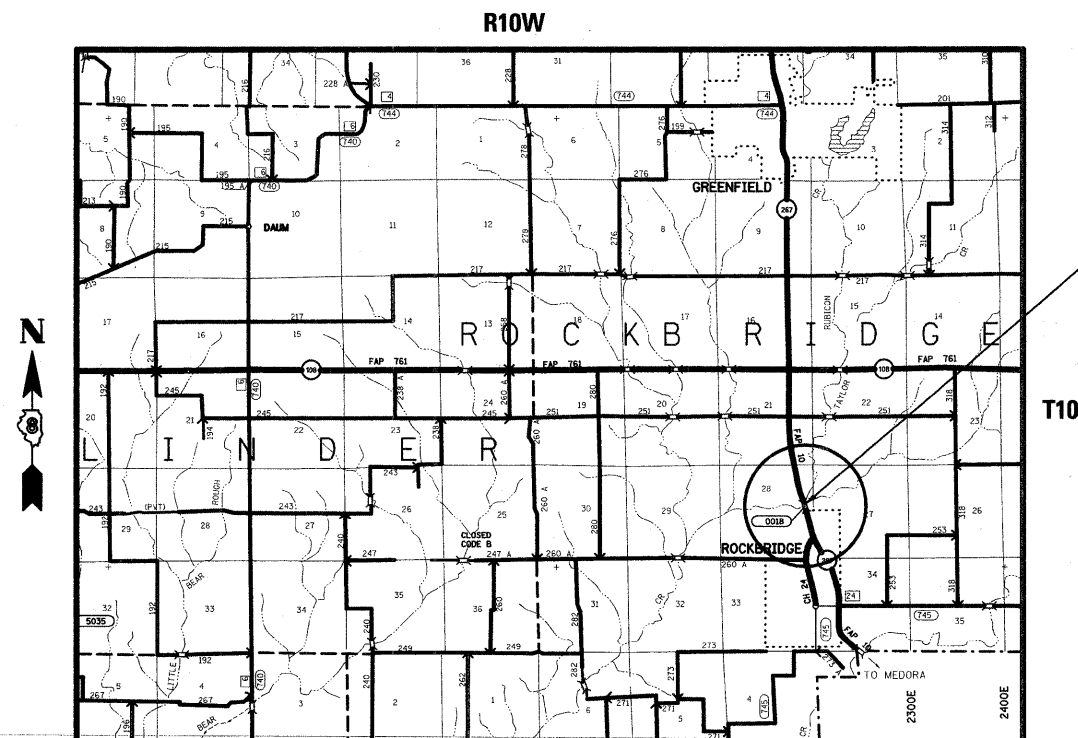


FULL SIZE PLANS HAVE BEEN PREPARED USING STANDARD ENGINEERING SCALES. REDUCED SIZED PLANS WILL NOT CONFORM TO STANDARD SCALES. IN MAKING MEASUREMENTS ON REDUCED PLANS, THE ABOVE SCALES MAY BE USED.

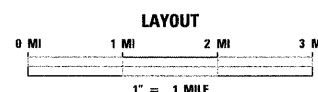
J.U.L.I.E.  
JOINT UTILITY LOCATION INFORMATION FOR EXCAVATION  
1-800-892-0123  
OR 811

TRAFFIC DATA:

ADT: 2200 (2009)  
2700 (2025)  
SU: 5.8%  
MU: 12.8%



PROJECT LOCATION  
STATION 85+20.50



LATITUDE: 39.11796  
LONGITUDE: 90.20696

GROSS LENGTH: .029 MILES (ABUTMENT TO ABUTMENT)  
NET LENGTH: .029 MILES (ABUTMENT TO ABUTMENT)

PROJECT ENGINEER: PATTI LEBEAU (618) 346-3179  
SQUAD CONTACT: ART MUEHLFELD (618) 346-3209

CONTRACT NO. 76B58

STATE OF ILLINOIS  
DEPARTMENT OF TRANSPORTATION  
DIVISION OF HIGHWAYS

SUBMITTED *October 16, 20 08*

*M. C. Jamme*  
DEPUTY DIRECTOR OF HIGHWAYS, REGION 5 ENGINEER

*December 5, 20 08*  
*Eric E. Harms*  
ENGINEER OF DESIGN AND ENVIRONMENT

*December 5, 20 08*  
*Christine M. Reed*  
DIRECTOR OF HIGHWAYS, CHIEF ENGINEER

**PRINTED BY THE AUTHORITY  
OF THE STATE OF ILLINOIS**