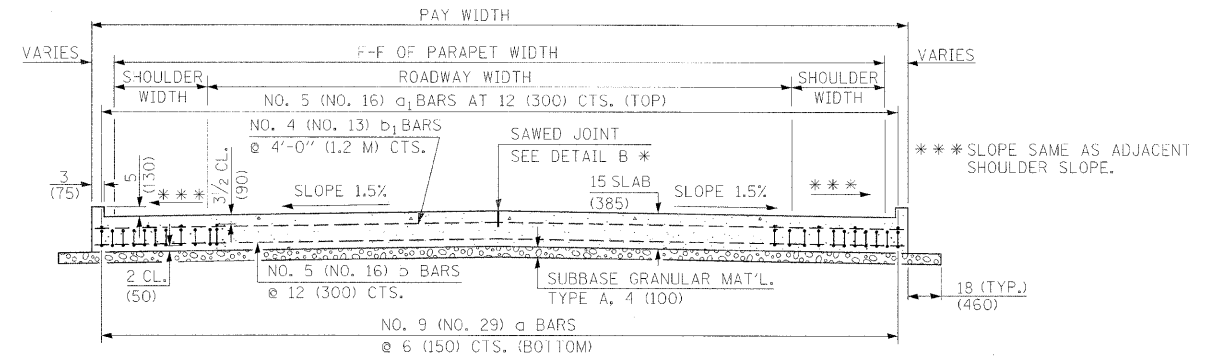


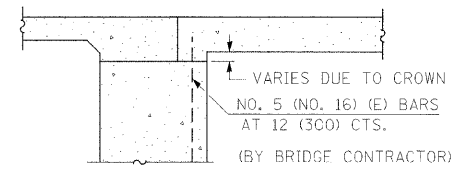
SECTION C-C

⊙ STAGGER NO. 9 (NO. 29) A BARS AS SHOWN ON PLAN - FULL WIDTH

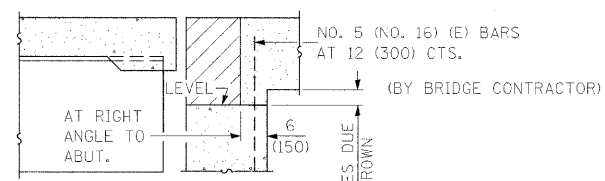


SECTION D-D

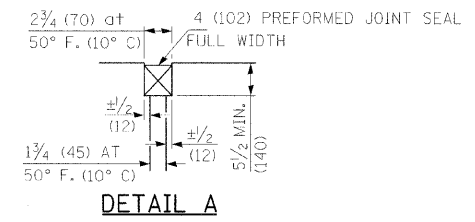
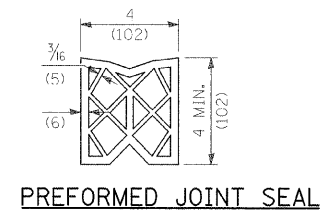
(SEE PLAN FOR DIMENSIONS NOT SHOWN)



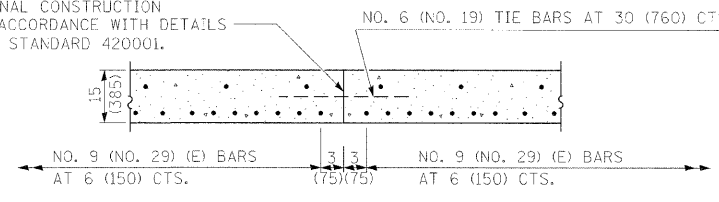
SECTION E-E
(INTEGRAL ABUTMENTS)



SECTION E-E
(JOINTED ABUTMENTS)

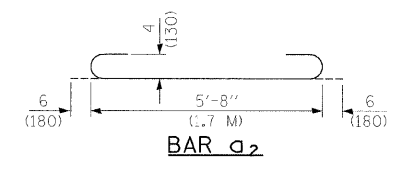
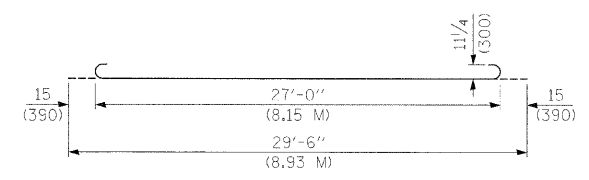


LONGITUDINAL CONSTRUCTION JOINT IN ACCORDANCE WITH DETAILS SHOWN ON STANDARD 420001.



OPTIONAL LONGITUDINAL CONSTRUCTION JOINT

AS APPROVED BY THE ENGINEER, THE CONTRACTOR MAY ELECT TO REDUCE THE WIDTHS OF POUR BY USE OF THE OPTIONAL LONGITUDINAL CONSTRUCTION JOINT SHOWN. JOINTS SHALL BE LOCATED AT THE EDGE OF A TRAFFIC LANE.



DESIGN STRESSES
 f_y = 60,000 P.S.I. (400 MPa)
 f'c = 3,500 P.S.I. (24 MPa)
 n = 8.5

FILE NAME =	USER NAME = manntm	DESIGNED -	REVISED -	STATE OF ILLINOIS DEPARTMENT OF TRANSPORTATION	BRIDGE APPROACH PAVEMENT DETAIL	F.A.P. RTE.	SECTION	COUNTY	TOTAL SHEETS	SHEET NO.
c:\p\work\p\widat\manntm\dms51659\p\in0300a.dgn		DRAWN -	REVISED -			10	410BR-1	GREENE	37	12C
PLOT SCALE = 20,0000' / IN.		CHECKED -	REVISED -			CONTRACT NO. 76B58				
PLOT DATE = 10/16/2000		DATE -	REVISED -			FED. ROAD DIST. NO.	ILLINOIS FED. AID PROJECT			
					SCALE:	SHEET NO. 3 OF 4 SHEETS	STA.	TO STA.		