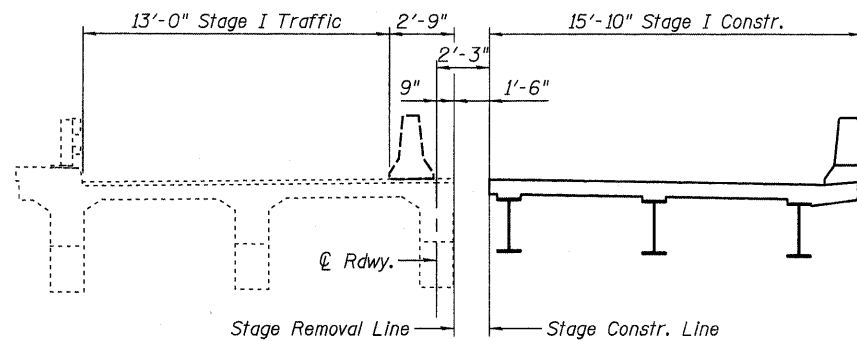
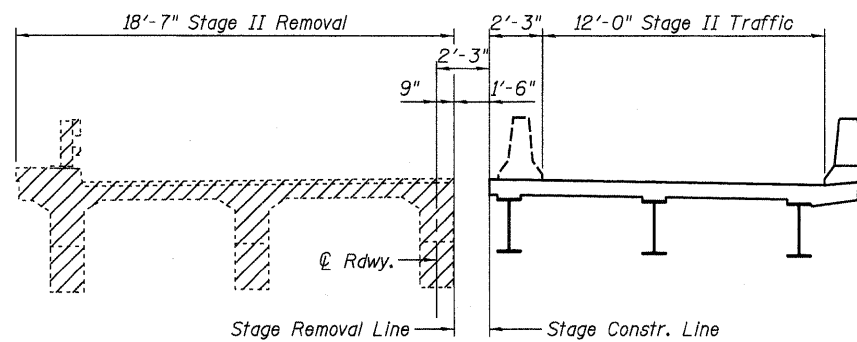


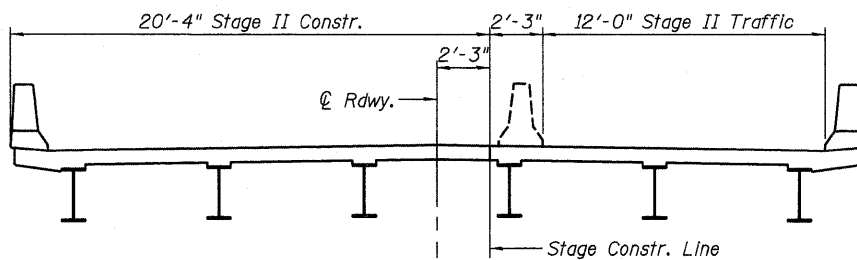
**STAGE I REMOVAL**  
(Looking South)



**STAGE I CONSTRUCTION**  
(Looking South)



**STAGE II REMOVAL**  
(Looking South)

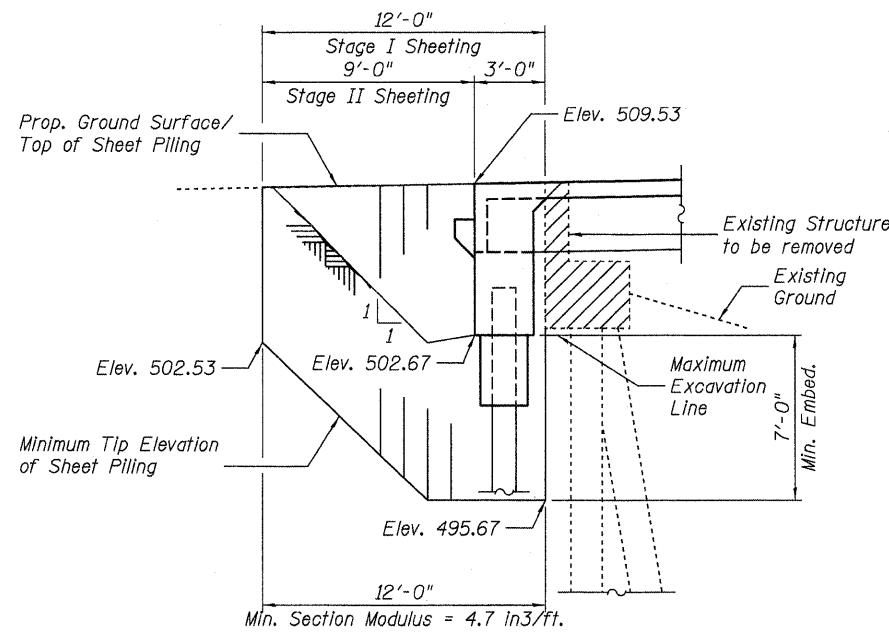


**STAGE II CONSTRUCTION**  
(Looking South)

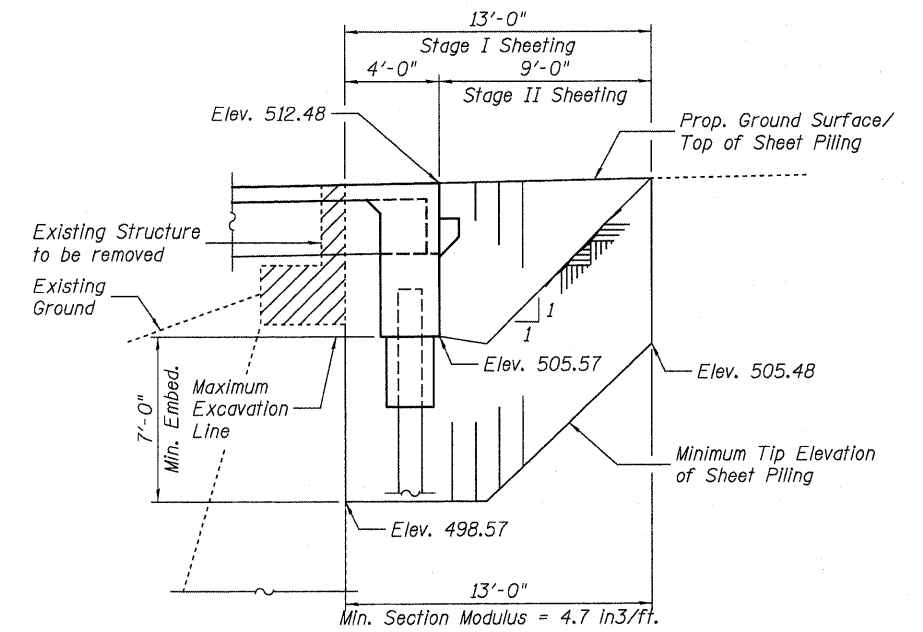
Notes:  
Hatched area indicates Removal of Existing Structures.  
Removal of existing railing is included with Removal of Existing Structures.  
For quantity and location of Temporary Concrete Barrier, see Roadway Plans.

DESIGNED: JDQ	DRAWN: SJS
CHECKED: DCD	CHECKED: DCD

STATE OF ILLINOIS  
DEPARTMENT OF TRANSPORTATION



**NORTH ABUTMENT**

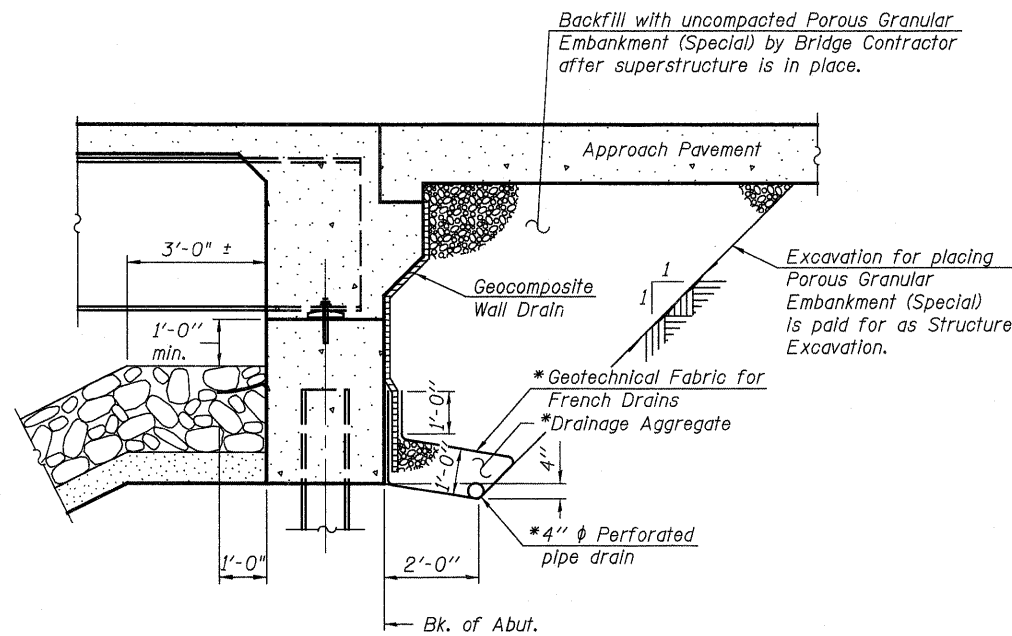


**SOUTH ABUTMENT**

**TEMPORARY SHEET PILING DETAILS**

(Slopes and horizontal dimensions are measured parallel to  $\varnothing$  roadway)

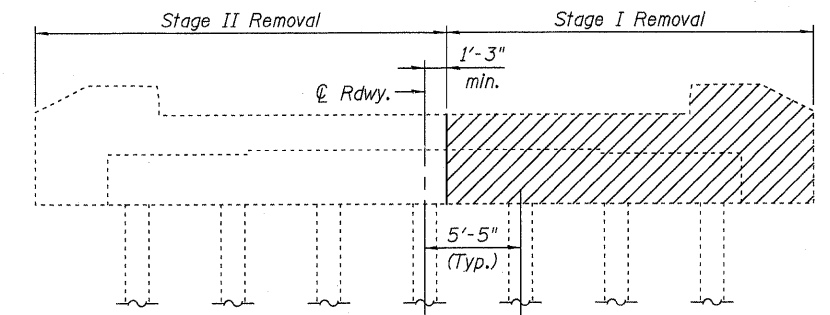
If the Contractor chooses to alter the temporary cantilevered sheet piling design requirements shown on plans, a design submittal including plan details and calculations will be required for review and acceptance by the Engineer.



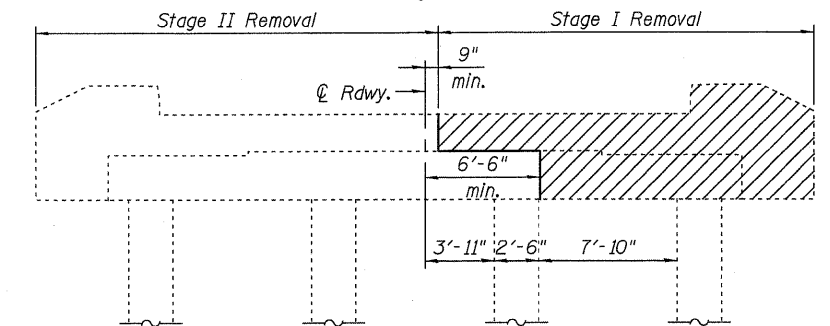
**SECTION THRU INTEGRAL ABUTMENT**  
(Horiz. dim.  $\varnothing$  Rt. L's)

\* Included in the cost of Pipe Underdrains for Structures.

Note:  
All drainage system components shall extend to 2'-0" from the end of each wingwall except an outlet pipe shall extend until intersecting with the side slopes. The pipes shall drain into concrete headwalls. (See Article 601.05 of the Standard Specifications and Highway Standard 601101).



**NORTH ABUTMENT**  
(Looking South)



**SOUTH ABUTMENT**  
(Looking South)

Note:  
South Abutment cap must remain supported on 3 columns during Stage I.

**STAGE CONSTRUCTION DETAILS**

ILLINOIS 267 OVER  
TAYLOR CREEK  
STRUCTURE NO. 031-0043

SHEET 2 OF 19	F.A.P. RTE.	SECTION	COUNTY	TOTAL SHEETS	SHEET NO.
	10	410BR-1	GREENE	37	14
	STA. 85+20.50		CONTRACT NO. 76B58		
FED. ROAD DIST. NO.		ILLINOIS FED. AID PROJECT			