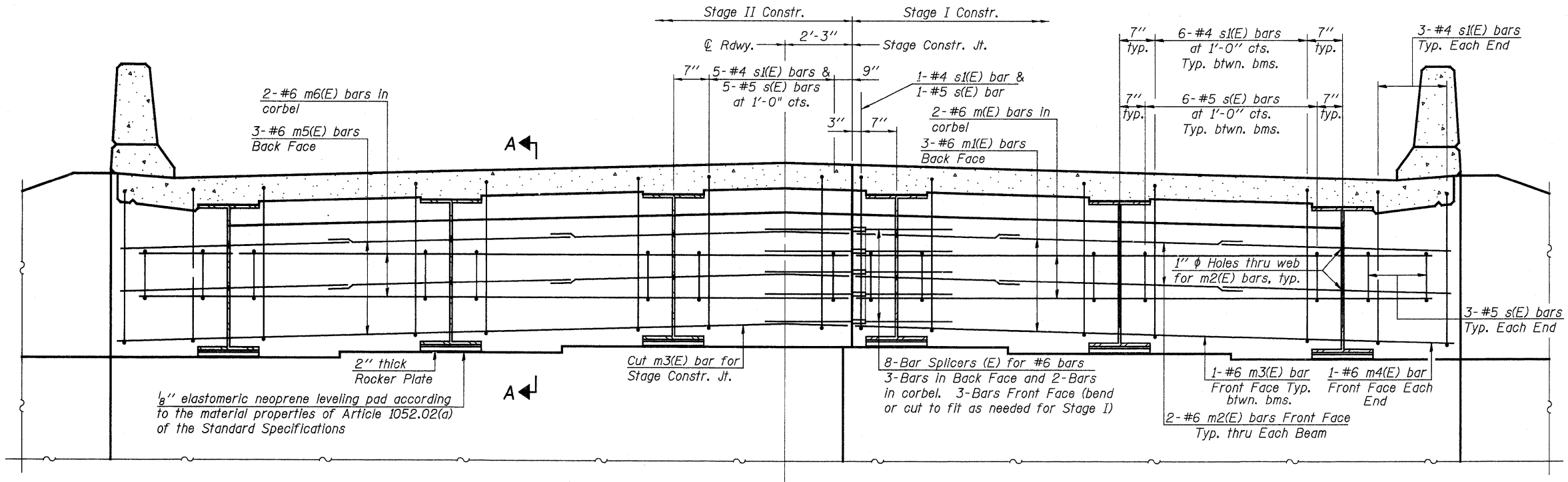
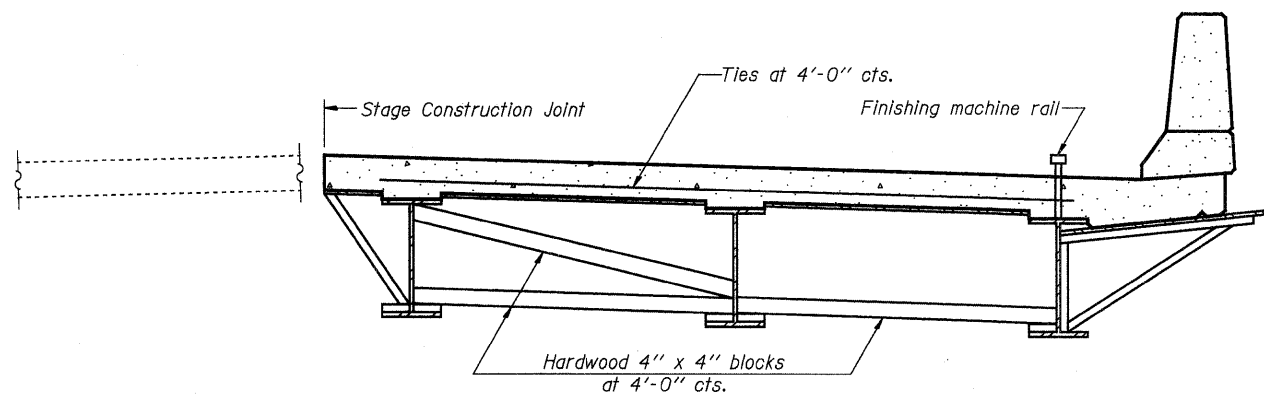


STATE OF ILLINOIS
DEPARTMENT OF TRANSPORTATION



DIAPHRAGM ELEVATION AT ABUTMENT



FORM BRACES FOR STAGE CONSTRUCTION

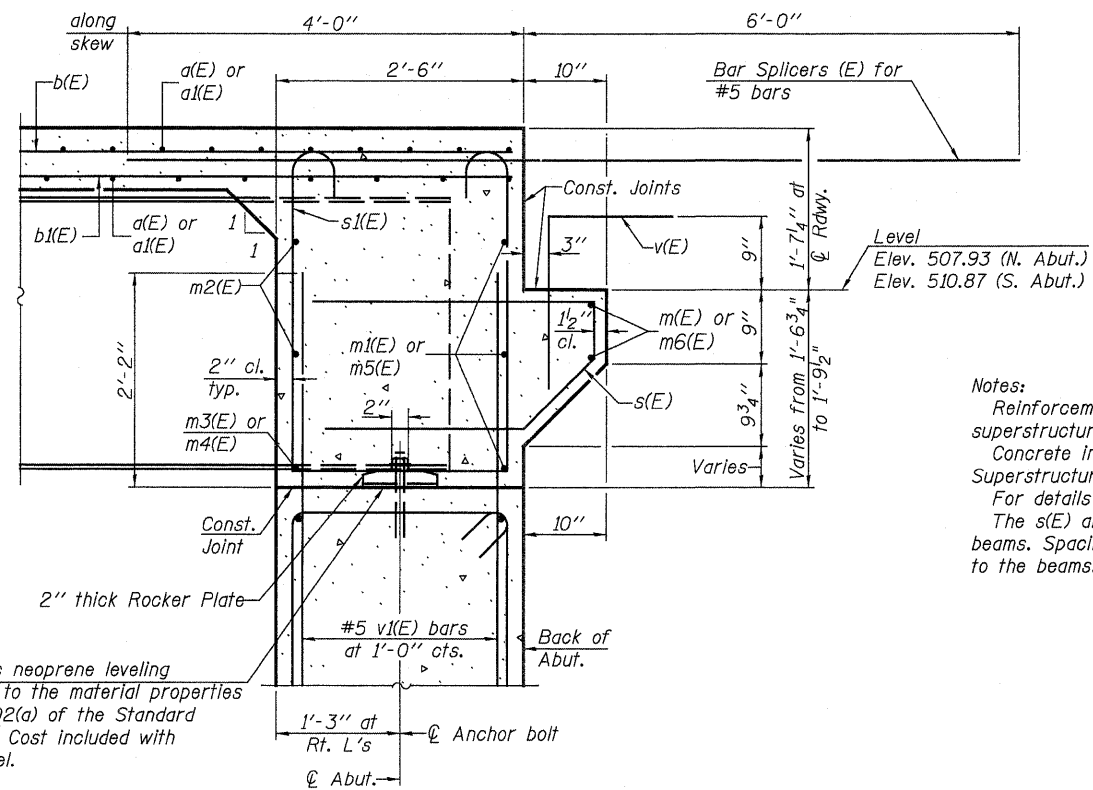
When cantilever forming brackets are used, the work shall be done according to Article 503.06(b) of the Standard Specifications, except as modified below and in the details shown on this sheet.

The finishing machine rails shall be placed on the top flange of the exterior beams.

The beams or girders, supporting cantilever forming brackets, shall be tied together at 4 foot intervals.

For Standard construction, or Stage Construction the Hardwood bracing materials shall be placed as shown between webs of beams in each bay.

1/8" elastomeric neoprene leveling pad according to the material properties of Art. 1052.02(a) of the Standard Specifications. Cost included with Structural Steel.



SECTION A-A

Dimensions at right angles to abutment, except as shown.

Notes:
Reinforcement bars in diaphragm are billed with superstructure on sheet 9 of 19.
Concrete in diaphragm is included with Concrete Superstructure on sheet 9 of 19.
For details of bars s(E) & s1(E) see sheet 9 of 19.
The s(E) and s1(E) bars shall be placed parallel to the beams. Spacing for these bars shall be at right angles to the beams.

MIN. BAR LAP

#6 bar = 2'-7"

INTEGRAL ABUTMENT
DIAPHRAGM DETAILS
ILLINOIS 267 OVER
TAYLOR CREEK
STRUCTURE NO. 031-0043

JD Johnson, Depp & Quisenberry
CONSULTING ENGINEERS
Springfield, Illinois

DESIGNED: JDQ	DRAWN: PTR
CHECKED: DCD	CHECKED: DCD

SI-DSI

5-16-08

SHEET 8 OF 19	F.A.P. RTE.	SECTION	COUNTY	TOTAL SHEETS	SHEET NO.
	10	410BR-1	GREENE	37	20
		STA. 85+20.50	CONTRACT NO. 76B58		
		FED. ROAD DIST. NO.	ILLINOIS FED. AID PROJECT		