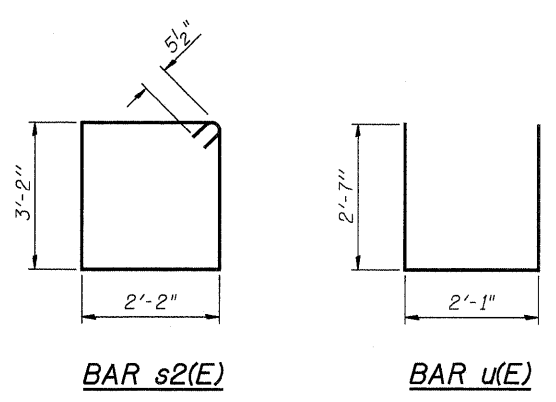
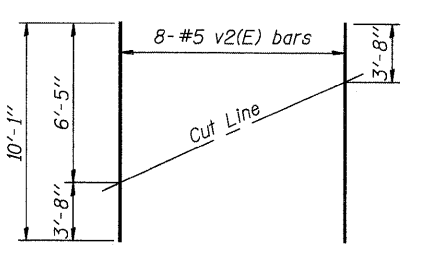
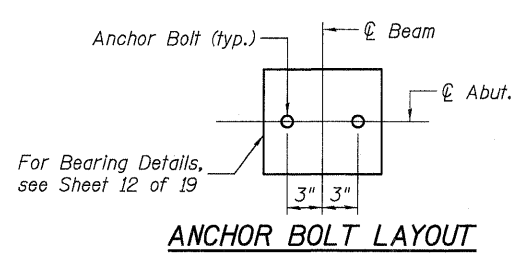
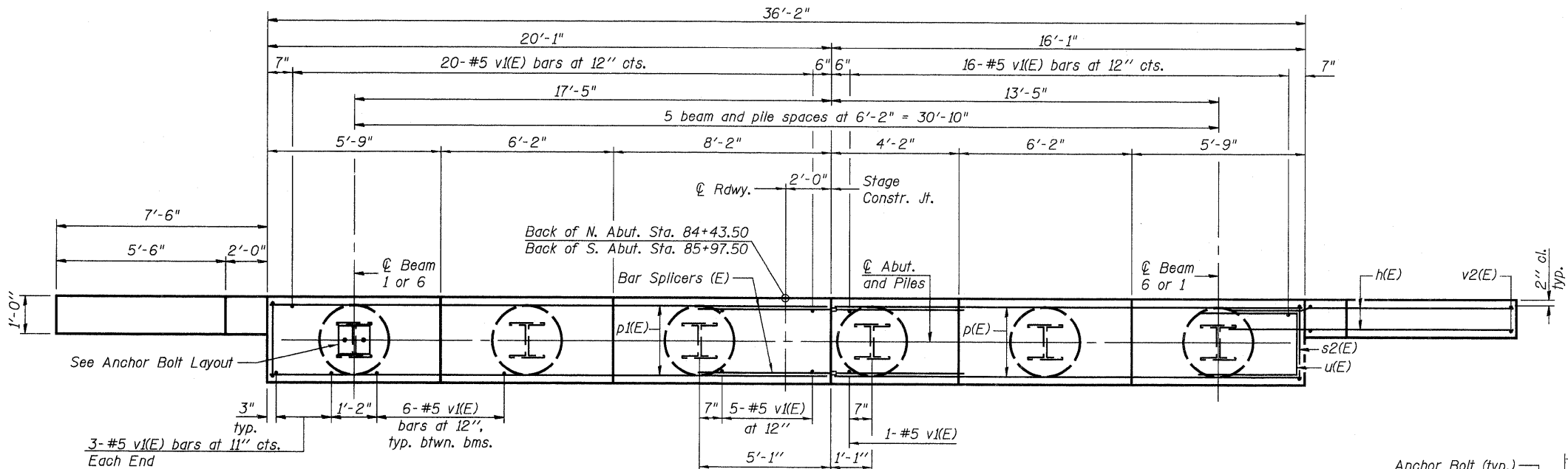
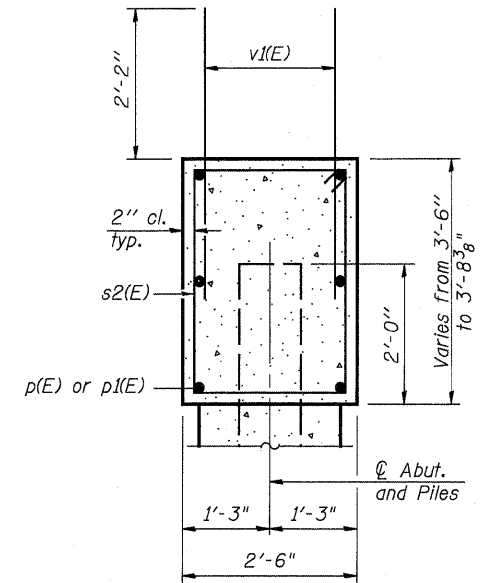
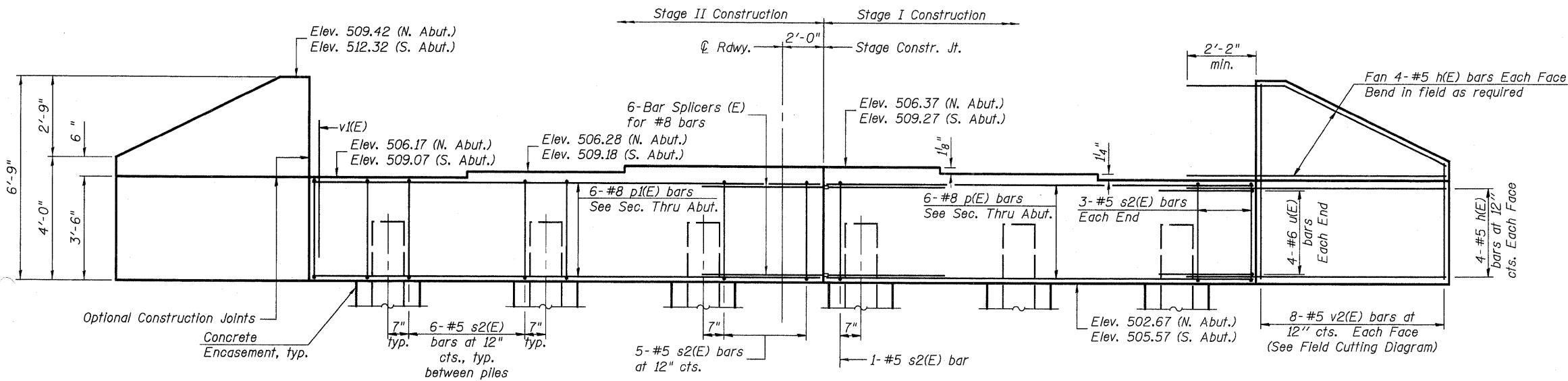


Notes: Pour steps monolithically with cap.
Elevations are symmetrical.

STATE OF ILLINOIS
DEPARTMENT OF TRANSPORTATION



BILL OF MATERIAL

Bar	No.	Size	Length	Shape		
h(E)	32	#5	9'-6"			
p(E)	6	#8	15'-9"			
p1(E)	6	#8	19'-9"			
s2(E)	36	#5	11'-7"			
u(E)	8	#6	7'-3"			
v1(E)	72	#5	4'-4"			
v2(E)	16	#5	10'-1"			
					N. Abut.	S. Abut.
Structure Excavation	Cu. Yd.				106	118
Concrete Structures	Cu. Yd.				15.2	15.2
Reinforcement Bars, Epoxy Coated	Pound				1910	1910
Furnishing Steel Piles HP12x53	Foot				525	525
Driving Piles	Foot				525	525
Test Pile Steel HP12x53	Each				1	1
Pile Shoes	Each				6	6
Concrete Encasement	Cu. Yd.				2.1	2.1

For details of Bar Splicers, see sheet 16 of 19.
For details of Piles and Concrete Encasement, see sheet 15 of 19.
Reinforcement Bar list is for one Abutment only.

NORTH AND SOUTH ABUTMENTS
ILLINOIS 267 OVER
TAYLOR CREEK
STRUCTURE NO. 031-0043

PILE DATA

Type: Steel-HP 12x53 with Pile Shoes
Nominal Required Bearing: 270 kips
Factored Resistance Available: 135 kips
Est. Length: 105' (each Abut.)
No. Production Piles: 5 (each Abut.)
No. Test Piles: 1 (each Abut.)

Johnson, Depp & Quisenberry CONSULTING ENGINEERS Springfield, Illinois	
DESIGNED: JDQ	DRAWN: SJS
CHECKED: DCD	CHECKED: DCD

AI-0 5-16-08

SHEET 13 OF 19	F.A.P. RTE.	SECTION	COUNTY	TOTAL SHEETS	SHEET NO.
	10	410BR-1	GREENE	37	25
		STA. 85+20.50		CONTRACT NO. 76B58	
FED. ROAD DIST. NO.		ILLINOIS FED. AID PROJECT			