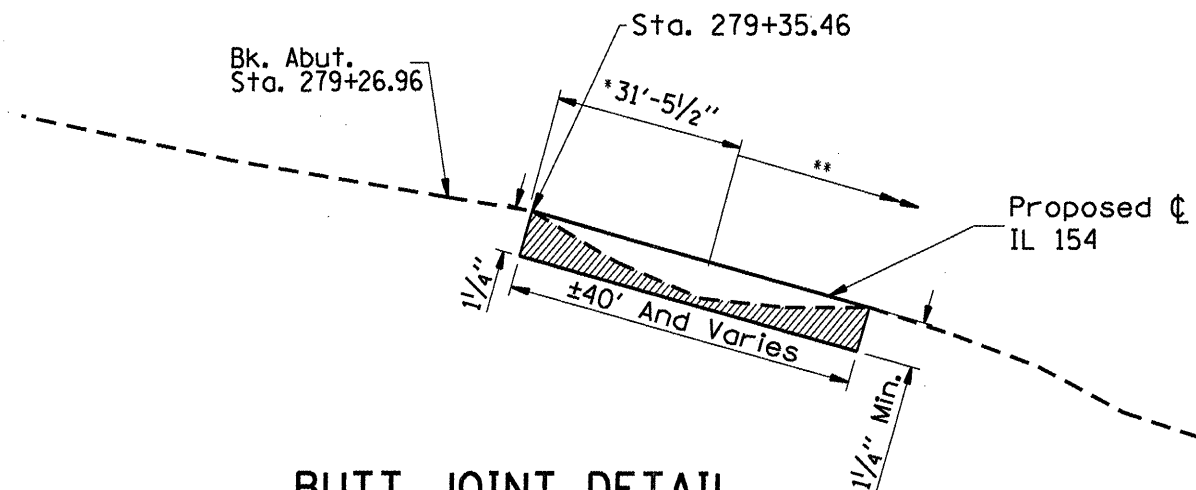


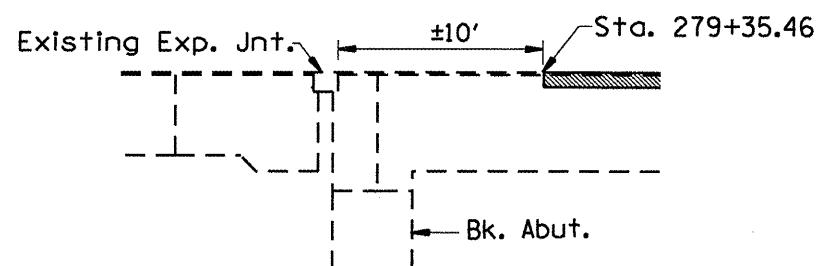
STATE OF ILLINOIS  
DEPARTMENT OF TRANSPORTATION

F.A.P. RTE.	SECTION	COUNTY	TOTAL SHEETS	SHEET NO.
331 332 845	D9 BRIDGE APPROACH PROFILE FY09-1	FRANKLIN JACKSON	15	5
FED. ROAD DIST. NO. 7		ILLINOIS	CONTRACT NO. 78101	

NOTES: EXISTING PLANS SHOW ±3" CLEARANCE TO REINFORCEMENT BARS IN TOP OF APPROACH SLAB.  
WASTE HMA PAVEMENT FROM REMOVAL OPERATIONS SHALL BE PLACED ON AGGREGATE SHOULDERS ADJACENT TO NEW SURFACE AS DIRECTED BY THE ENGINEER.



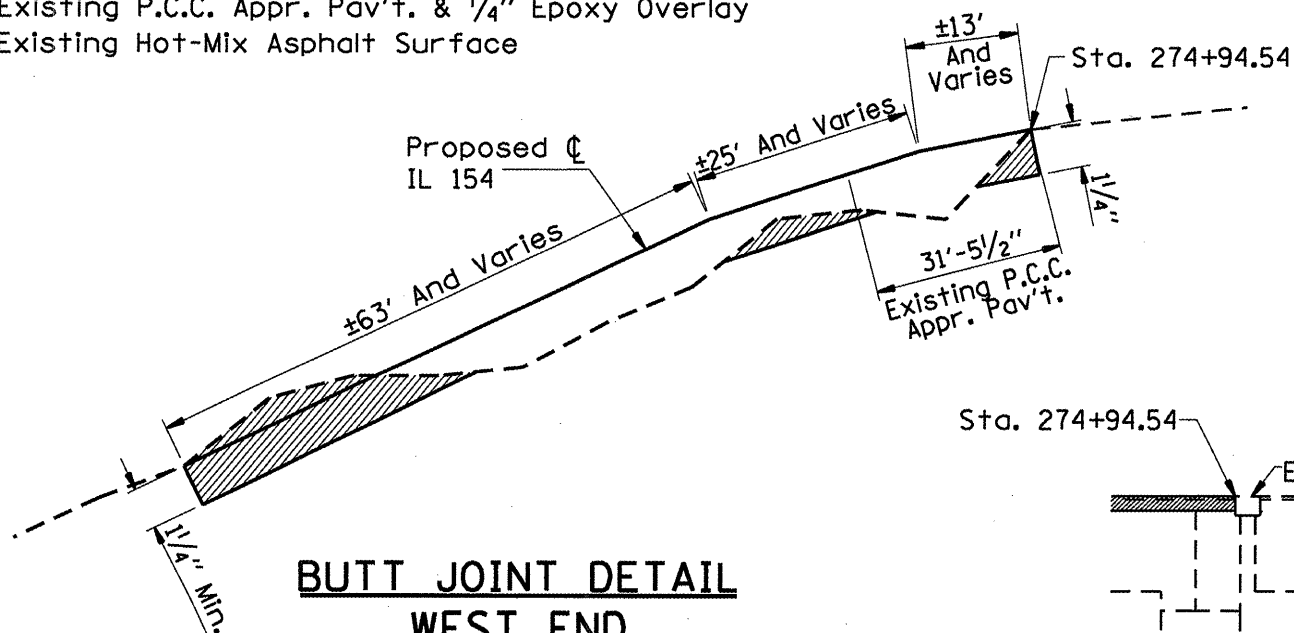
**BUTT JOINT DETAIL EAST END**



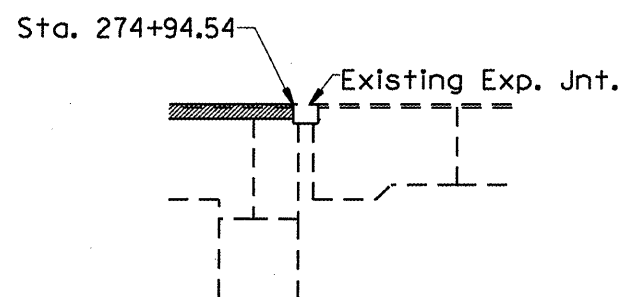
**SECTION BUTT JOINT AT WEST ABUT**

P.C.C. SURFACE REMOVAL- BUTT JOINT

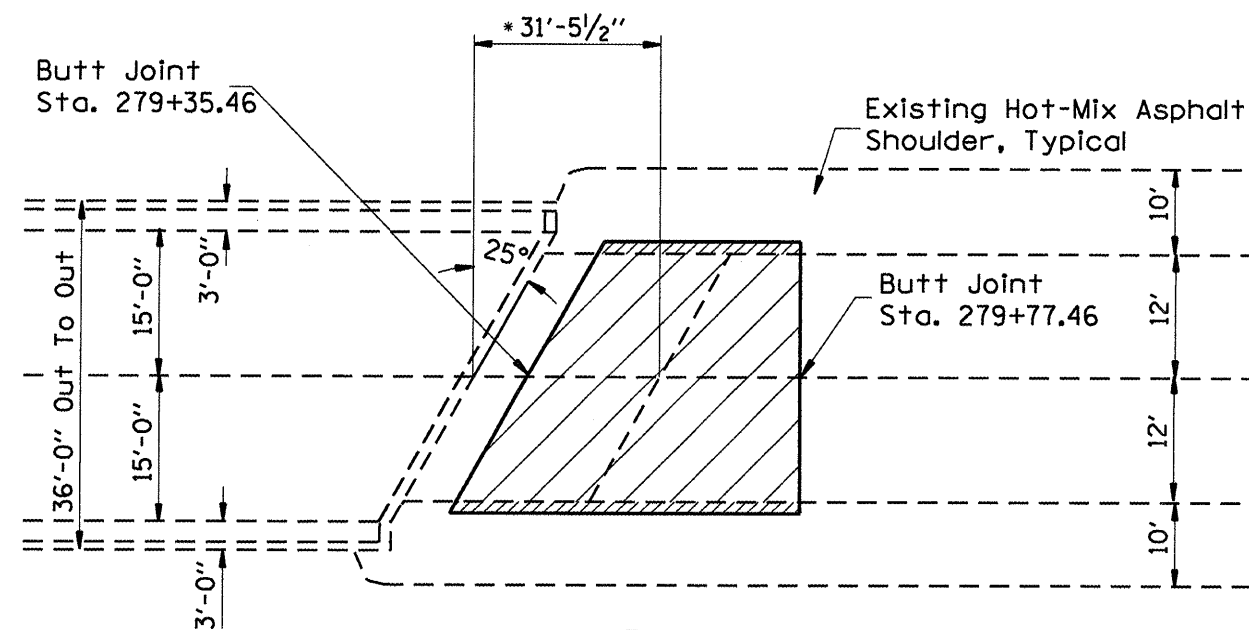
- Existing P.C.C. Appr. Pav't. & 1/4" Epoxy Overlay
- Existing Hot-Mix Asphalt Surface



**BUTT JOINT DETAIL WEST END**



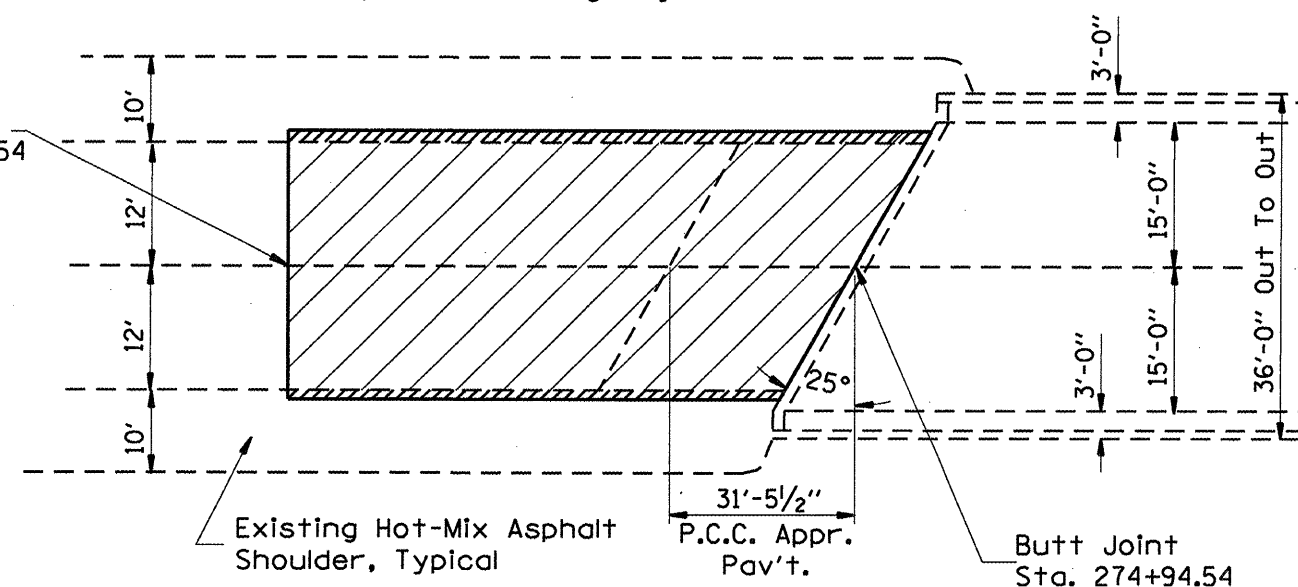
**SECTION BUTT JOINT AT WEST ABUT**



**PLAN VIEW EAST END**

- HMA SURFACE
- Slope 10:1 On Shoulder
- HMA SURFACE - 1/4" MIN.

Match Cross Slope of Existing Adjacent Pavement



**PLAN VIEW WEST END**

THE CONTRACTOR SHALL EXERCISE CAUTION WHEN REMOVING EXISTING OVERLAY ADJACENT TO EXISTING NEOPRENE JOINT. ANY DAMAGE TO NEOPRENE JOINT SHALL BE REPAIRED BY THE CONTRACTOR AT NO ADDITIONAL COST TO THE STATE.