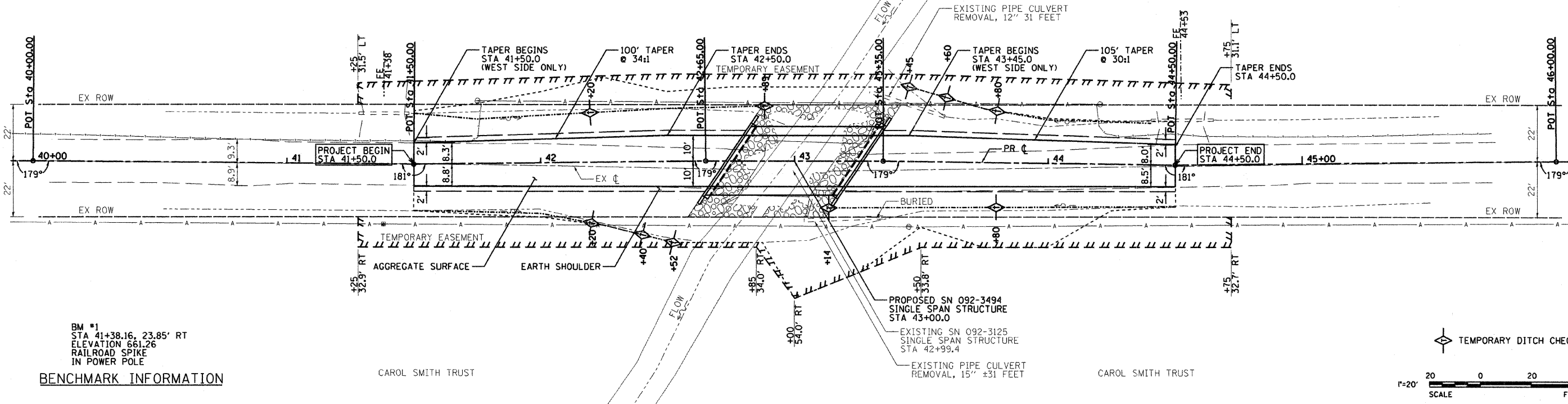


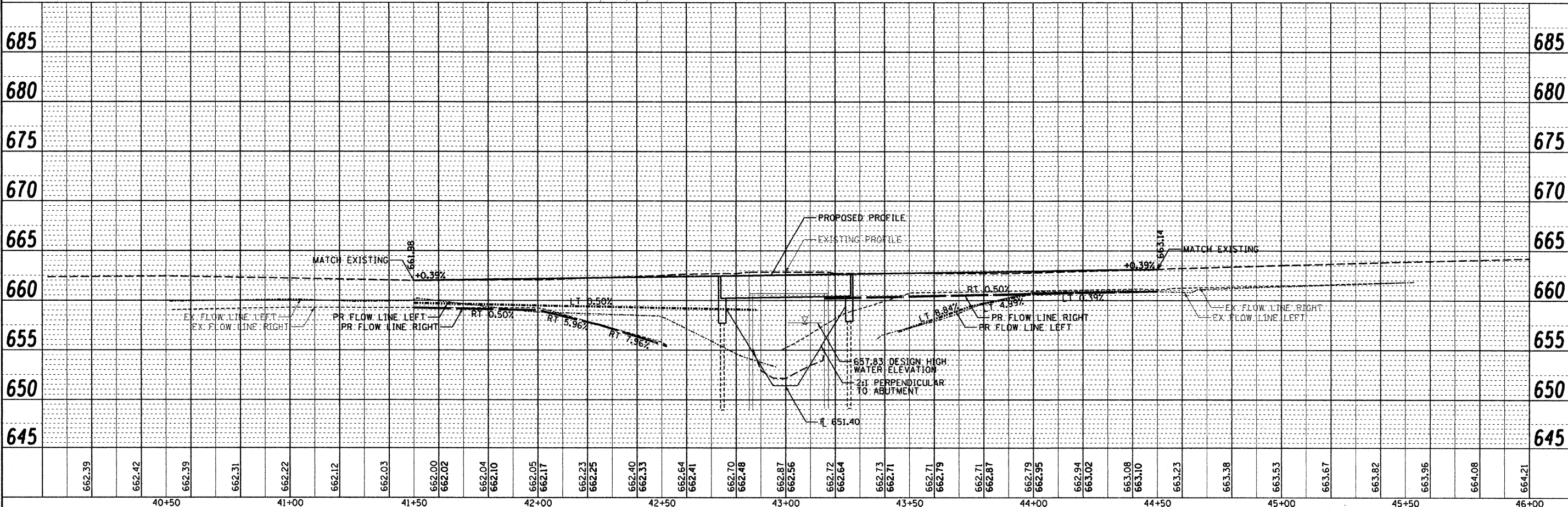


DATE	
BY	
REGISTERED	
PLOTTED	
ALIGNED	
CHECKED	
DATE	
NO.	
CADD FILE NAME	
PLAN	
NOTE BOOK	
NO.	
STRUCTURE	



DATE	
BY	
REGISTERED	
PLOTTED	
ALIGNED	
CHECKED	
DATE	
NO.	
STRUCTURE	

PRINTED DATE: 10/6/2008
D:\p\projects\vermilion. county of vt. 164 over swap creek\road\plan\sheet\103.dwg



662.39			
662.42			
662.39			
662.31			
662.22			
662.12			
662.03			
662.00			
662.02			
662.04			
662.10			
662.05			
662.17			
662.23			
662.25			
662.40			
662.33			
662.64			
662.41			
662.70			
662.48			
662.87			
662.56			
662.72			
662.64			
662.73			
662.71			
662.71			
662.79			
662.71			
662.87			
662.79			
662.95			
662.94			
663.02			
663.08			
663.10			
663.23			
663.38			
663.53			
663.67			
663.82			
663.96			
664.08			
664.21			

40+50			
41+00			
41+50			
42+00			
42+50			
43+00			
43+50			
44+00			
44+50			
45+00			
45+50			
46+00			

 <small>Excelsior, Service, Integrity</small>	USER NAME = #USER#	DESIGNED - ADG	REVISED -	STATE OF ILLINOIS DEPARTMENT OF TRANSPORTATION	PLAN & PROFILE	DRAWN - ADG	REVISED -	SECTION	COUNTY	TOTAL SHEETS	SHEET NO.
	PLOT SCALE = 20.0000' / 1" IN.	CHECKED - DF	REVISED -			01-03131-00-BR	VERMILION	13	3		
PLOT DATE = 10/6/2008	DATE - 09-29-2008	REVISED -				CONTRACT NO. 91365					
			SCALE: 1"=20'			SHEET NO. 1 OF 1 SHEETS	STA. 41.50 TO STA. 44+50	FED. ROAD DIST. NO. - ILLINOIS FED. AID PROJECT			