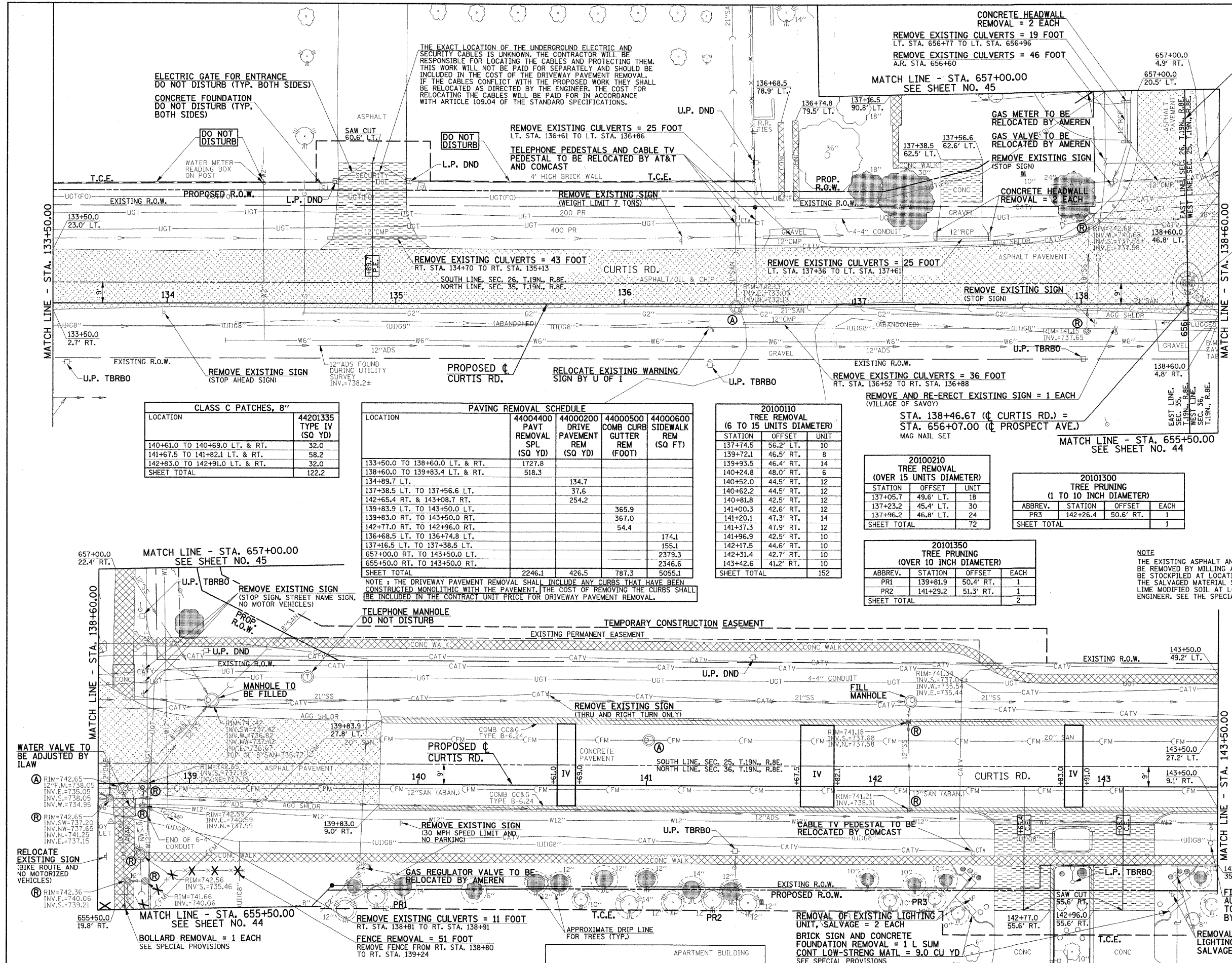


- LEGEND**
- U.P. DND - UTILITY POLE DO NOT DISTURB
  - L.P. DND - LIGHT POLE DO NOT DISTURB
  - U.P. TBRBO - UTILITY POLE TO BE RELOCATED BY OTHERS
  - L.P. TBRBO - LIGHT POLE TO BE RELOCATED BY OTHERS
  - (M) - MAILBOX TO BE RELOCATED
  - (A) - STRUCTURE TO BE ADJUSTED
  - (R) - STRUCTURE TO BE REMOVED
  - OR (R) OR (M) - TREE REMOVAL
  - PR1 - TREE PRUNING
  - (Hatched) - PORTLAND CEMENT CONCRETE SURFACE REMOVAL-BUTT JOINT (SEE DETAIL)
  - (Hatched) - HOT-MIX ASPHALT SURFACE REMOVAL - BUTT JOINT (SEE DETAIL)
  - (Hatched) - PAVEMENT REMOVAL
  - (Hatched) - PAVEMENT REMOVAL (SPECIAL) (SEE NOTE)
  - (Hatched) - DRIVEWAY PAVEMENT REMOVAL
  - (Hatched) - COMBINATION CURB AND GUTTER REMOVAL
  - (Hatched) - SIDEWALK REMOVAL
  - X-X-X- - EXISTING FENCE
  - X-X-X- - FENCE REMOVAL



**CLASS C PATCHES, 8"**

LOCATION	44201335 TYPE IV (SQ YD)
140+61.0 TO 140+69.0 LT. & RT.	32.0
141+67.5 TO 141+82.1 LT. & RT.	58.2
142+83.0 TO 142+91.0 LT. & RT.	32.0
SHEET TOTAL	122.2

**PAVING REMOVAL SCHEDULE**

LOCATION	44004400 PAVT REMOVAL SPL (SQ YD)	44000200 DRIVE PAVEMENT REM (SQ YD)	44000500 COMB CURB GUTTER REM (FOOT)	44000600 SIDEWALK REM (SQ FT)
133+50.0 TO 138+60.0 LT. & RT.	1727.8			
138+60.0 TO 139+83.4 LT. & RT.	518.3			
134+89.7 LT.		134.7		
137+38.5 LT. TO 137+56.6 LT.		37.6		
142+65.4 RT. & 143+08.7 RT.		254.2		
139+83.9 LT. TO 143+50.0 LT.			365.9	
139+83.0 RT. TO 143+50.0 RT.			367.0	
142+77.0 RT. TO 142+96.0 RT.			54.4	
136+68.5 LT. TO 136+74.8 LT.				174.1
137+16.5 LT. TO 137+38.5 LT.				155.1
657+00.0 RT. TO 143+50.0 LT.				2379.3
655+50.0 RT. TO 143+50.0 RT.				2346.6
SHEET TOTAL	2246.1	426.5	787.3	5055.1

**20100110 TREE REMOVAL (6 TO 15 UNITS DIAMETER)**

STATION	OFFSET	UNIT
137+74.5	56.2' LT.	10
139+72.1	46.5' RT.	8
139+93.5	46.4' RT.	14
140+24.8	48.0' RT.	6
140+52.0	44.5' RT.	12
140+62.2	44.5' RT.	12
140+81.8	42.5' RT.	12
141+00.3	42.6' RT.	12
141+20.1	47.3' RT.	14
141+37.3	47.9' RT.	12
141+96.9	42.5' RT.	10
142+17.5	44.6' RT.	10
142+31.4	42.7' RT.	10
143+42.6	41.2' RT.	10
SHEET TOTAL		152

**20100210 TREE REMOVAL (OVER 15 UNITS DIAMETER)**

STATION	OFFSET	UNIT
137+05.7	49.6' LT.	18
137+23.2	45.4' LT.	30
137+96.2	46.8' LT.	24
SHEET TOTAL		72

**20101300 TREE PRUNING (1 TO 10 INCH DIAMETER)**

ABBREV.	STATION	OFFSET	EACH
PR3	142+26.4	50.6' RT.	1
SHEET TOTAL			1

**20101350 TREE PRUNING (OVER 10 INCH DIAMETER)**

ABBREV.	STATION	OFFSET	EACH
PR1	139+81.9	50.4' RT.	1
PR2	141+29.2	51.3' RT.	1
SHEET TOTAL			2

**NOTE**  
THE EXISTING ASPHALT AND OIL AND CHIP PAVEMENTS SHALL BE REMOVED BY MILLING AND THE SALVAGED MATERIAL SHALL BE STOCKPILED AT LOCATIONS APPROVED BY THE ENGINEER. THE SALVAGED MATERIAL SHALL BE REUSED IN PLACE OF THE LIME MODIFIED SOIL AT LOCATIONS DESIGNATED BY THE ENGINEER. SEE THE SPECIAL PROVISIONS.

FOR PROPOSED CONSTRUCTION IN THIS AREA SEE PLAN AND PROFILE SHEET NO'S. 61-63.

MAILBOXES SHALL BE RELOCATED AS DIRECTED BY THE ENGINEER IN ACCORDANCE WITH ARTICLE 107.20 OF THE STANDARD SPECIFICATIONS.

SEE PLAN AND PROFILE SHEETS FOR STORM SEWER REMOVAL AND STRUCTURE REMOVAL AND ADJUSTMENT SCHEDULES.

EXISTING PAVEMENTS, CURBS AND GUTTERS, AND SIDEWALKS IN WHICH THE TOP SURFACE IS TO BE JOINED TO THE PROPOSED WORK SHALL BE SO JOINED THROUGH SAW CUT JUNCTURES.

THE REMOVAL AND RELOCATION OF VARIOUS TRAFFIC SIGNS NOTED HEREON SHALL BE AS DIRECTED BY THE ENGINEER AND AS SPECIFIED IN THE STANDARD SPECIFICATIONS. THIS WORK SHALL NOT BE PAID FOR SEPARATELY AND IS CONSIDERED INCLUDED IN THE VARIOUS REMOVAL ITEMS.

ILLINOIS DEPARTMENT OF TRANSPORTATION

**REMOVALS/RELOCATIONS PLAN**

SCALE: 1"=20'  
DATE: 10-08  
DRAWN BY: J.L.B.  
CHECKED BY: R.L.H.