

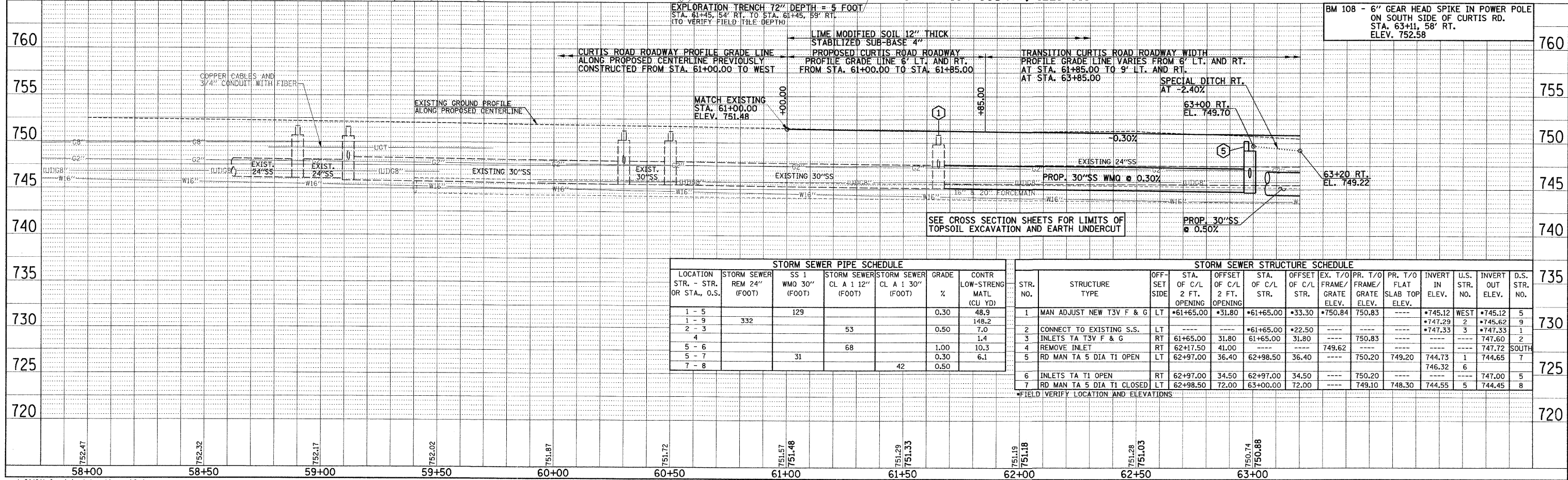
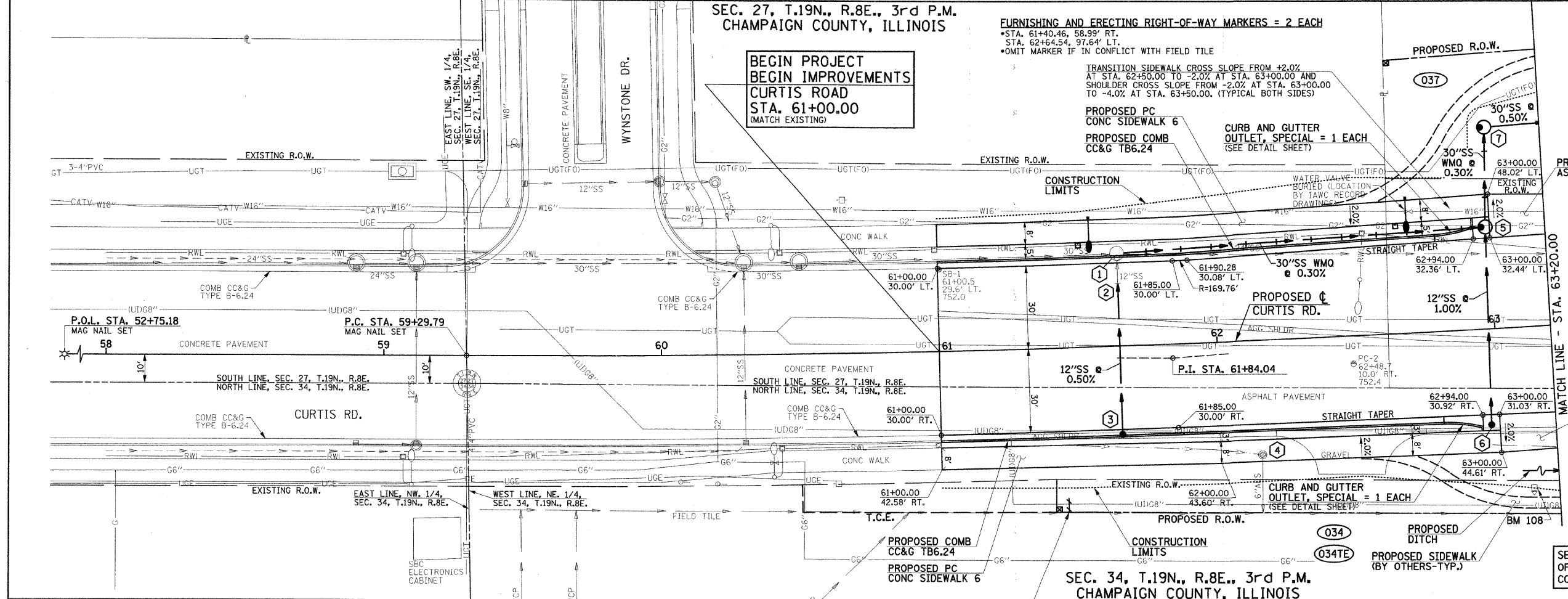
PROPOSED CURVE DATA
P.I. STA. 61+84.04
Δ = 4°30'28"
D = 0°53'13"
T = 254.25'
R = 6460.00'
L = 508.24'
E = 5.00'
P.C. STA. 59+29.79
P.R.C. STA. 64+38.03
S.E. = NONE

PROPOSED HOT-MIX ASPHALT SHOULDERS 5"

FOR REMOVAL/RELOCATION PLAN IN THIS AREA SEE SHEET NO. 32

SEE SCHEDULE OF QUANTITIES FOR TYPICAL SECTION PAVEMENT PAY ITEMS AND THEIR LOCATIONS.

SEE THE STAGE CONSTRUCTION AND MAINTENANCE OF TRAFFIC PLANS FOR THE VARIOUS STAGES AND CONSTRUCTION SEQUENCES ON CURTIS RD.



LOCATION STR. - STR. OR STA., O.S.	STORM SEWER REM 24" (FOOT)	SS 1 WMO 30" (FOOT)	STORM SEWER CL A 1 12" (FOOT)	STORM SEWER CL A 1 30" (FOOT)	GRADE %	CONTR LOW-STRENGTH MATL (CU YD)
1 - 5		129			0.30	48.9
1 - 9	332					148.2
2 - 3			53		0.50	7.0
4						1.4
5 - 6			68		1.00	10.3
5 - 7					0.30	6.1
7 - 8		31		42	0.50	

STR. NO.	STRUCTURE TYPE	OFF-SET SIDE	STA. OF C/L 2 FT. OPENING	OFFSET OF C/L 2 FT. OPENING	STA. OF C/L STR.	OFFSET OF C/L STR.	EX. T/O FRAME/GRATE ELEV.	PR. T/O FRAME/GRATE ELEV.	PR. T/O FLAT SLAB TOP ELEV.	INVERT IN ELEV.	U.S. STR. NO.	INVERT OUT ELEV.	D.S. STR. NO.
1	MAN ADJUST NEW T3V F & G	LT	*61+65.00	*31.80	*61+65.00	*33.30	*750.84	750.83	----	*745.12	WEST	*745.12	5
2	CONNECT TO EXISTING S.S.	LT	----	----	*61+65.00	*22.50	----	----	----	*747.29	2	*745.62	9
3	INLETS TA T3V F & G	RT	61+65.00	31.80	61+65.00	31.80	----	750.83	----	*747.33	3	*747.33	1
4	REMOVE INLET	RT	62+17.50	41.00	----	----	749.62	----	----	----	----	747.60	2
5	RD MAN TA 5 DIA T1 OPEN	LT	62+97.00	36.40	62+98.50	36.40	----	750.20	749.20	744.73	1	744.65	7
6	INLETS TA T1 OPEN	RT	62+97.00	34.50	62+97.00	34.50	----	750.20	----	746.32	6	----	5
7	RD MAN TA 5 DIA T1 CLOSED	LT	62+98.50	72.00	63+00.00	72.00	----	749.10	748.30	744.55	5	744.45	8

*FIELD VERIFY LOCATION AND ELEVATIONS