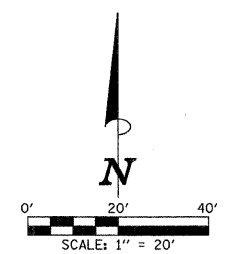


SEC. 26, T.19N., R.8E., 3rd P.M.
CHAMPAIGN COUNTY, ILLINOIS

F.A.P. RTE.	SECTION	COUNTY	TOTAL SHEETS	SHEET NO.
807	00-00374-01-PV	CHAMPAIGN	242	56
STA. 107+00.00		TO STA. 111+40.00		
ILLINOIS F.A. PROJ. NO. RS-HPP-1805(001)				
CONTRACT NO. 91368				

P CUL CL A 1 24 = 322 FOOT
PRC FLAR END SEC 24 = 2 EACH
GRATING-C FL END S 24 = 2 EACH
CONT LOW-STRENG MATL = 10.1 CU YD
U.S.F.L. ELEV. = 743.14 (FES) - STA. 112+80.0, 70.0' RT.
D.S.F.L. ELEV. = 742.12 (FES) - STA. 109+40.0, 64.0' RT.

PROPOSED CURVE DATA
CURTIS RD.
P.I. STA. 106+64.76
Δ = 3°58'11"
D = 0°53'13"
T = 223.89'
R = 6460.00'
L = 447.59'
E = 3.88'
P.R.C. STA. 104+40.88
P.T. STA. 108+88.47
S.E. = NONE



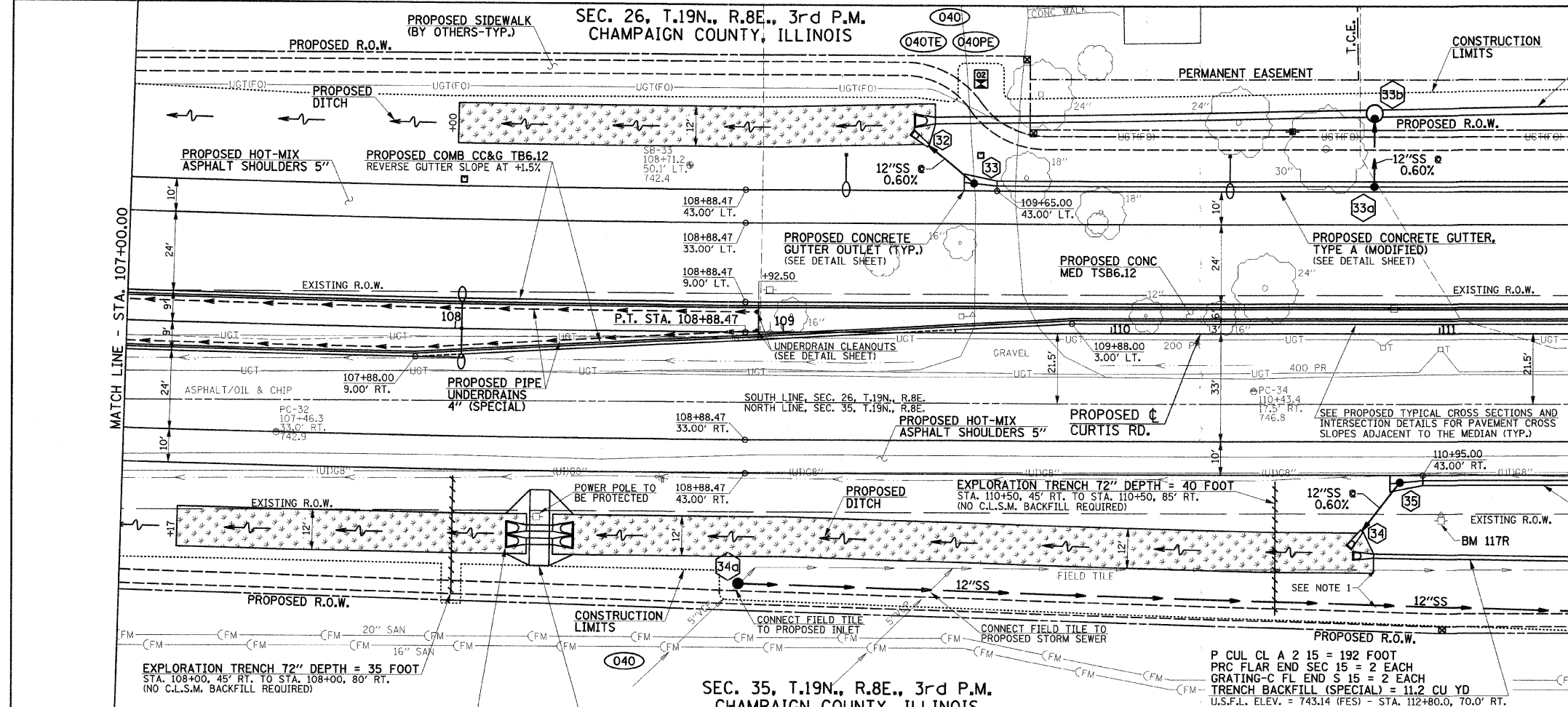
LEGEND
[Symbol] PROPOSED SODDING FOR DITCH LINING

FURNISHING AND ERECTING RIGHT-OF-WAY MARKERS = 3 EACH
STA. 109+75.00, 83.50' LT.
STA. 109+75.00, 61.50' LT.
STA. 111+00.00, 90.50' RT.

FOR REMOVAL/RELOCATION PLAN IN THIS AREA SEE SHEET NO'S. 36-37.

SEE SCHEDULE OF QUANTITIES FOR TYPICAL SECTION PAVEMENT PAY ITEMS AND THEIR LOCATIONS.

SEE THE STAGE CONSTRUCTION AND MAINTENANCE OF TRAFFIC PLANS FOR THE VARIOUS STAGES AND CONSTRUCTION SEQUENCES ON CURTIS RD.

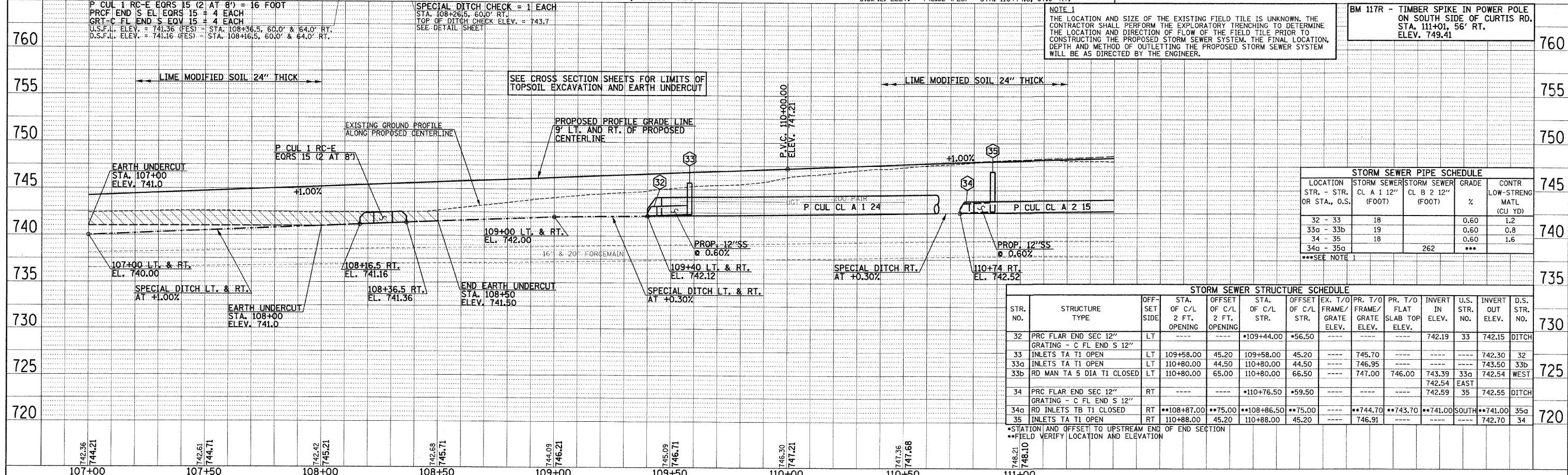


SEC. 35, T.19N., R.8E., 3rd P.M.
CHAMPAIGN COUNTY, ILLINOIS

P CUL CL A 2 15 = 192 FOOT
PRC FLAR END SEC 15 = 2 EACH
GRATING-C FL END S 15 = 2 EACH
TRENCH BACKFILL (SPECIAL) = 11.2 CU YD
U.S.F.L. ELEV. = 743.14 (FES) - STA. 112+80.0, 70.0' RT.
D.S.F.L. ELEV. = 742.52 (FES) - STA. 110+74.0, 67.0' RT.

NOTE 1
THE LOCATION AND SIZE OF THE EXISTING FIELD TILE IS UNKNOWN. THE CONTRACTOR SHALL PERFORM THE EXPLORATORY TRENCHING TO DETERMINE THE LOCATION AND DIRECTION OF FLOW OF THE FIELD TILE PRIOR TO CONSTRUCTING THE PROPOSED STORM SEWER SYSTEM. THE FINAL LOCATION, DEPTH AND METHOD OF OUTLETTING THE PROPOSED STORM SEWER SYSTEM WILL BE AS DIRECTED BY THE ENGINEER.

BM 117R - TIMBER SPIKE IN POWER POLE ON SOUTH SIDE OF CURTIS RD. STA. 111+01, 56' RT. ELEV. 749.41



LOCATION STR. - STR. OR STA., O.S.	STORM SEWER (FOOT)	STORM SEWER (FOOT)	GRADE %	CONTR LOW-STRENG MATL (CU YD)
32 - 33	18		0.60	1.2
33a - 33b	19		0.60	0.8
34 - 35	18		0.60	1.6
34a - 35a		262	***	

STR. NO.	STRUCTURE TYPE	OFF-SET SIDE	STA. OF C/L 2 FT. OPENING	OFFSET OF C/L 2 FT. OPENING	STA. OF C/L STR.	OFFSET OF C/L STR.	EX. T/O FRAME/GRATE ELEV.	PR. T/O FRAME/GRATE ELEV.	PR. T/O FLAT SLAB TOP ELEV.	INVERT IN ELEV.	U.S. STR. NO.	INVERT OUT ELEV.	D.S. STR. NO.
32	PRC FLAR END SEC 12" GRATING - C FL END S 12"	LT			*109+44.00	*56.50				742.19	33	742.15	DITCH
33	INLETS TA T1 OPEN	LT	109+58.00	45.20	109+58.00	45.20	745.70					742.30	32
33a	INLETS TA T1 OPEN	LT	110+80.00	44.50	110+80.00	44.50	746.95					743.50	33b
33b	RD MAN TA 5 DIA T1 CLOSED	LT	110+80.00	65.00	110+80.00	66.50	747.00	746.00	743.39	742.54	33a	742.54	WEST
34	PRC FLAR END SEC 12" GRATING - C FL END S 12"	RT			*110+76.50	*59.50				742.59	35	742.55	DITCH
34a	RD INLETS TB T1 CLOSED	RT	**108+87.00	**75.00	**108+86.50	**75.00	**744.70	**743.70	**741.00			**741.00	35a
35	INLETS TA T1 OPEN	RT	110+88.00	45.20	110+88.00	45.20	746.91					742.70	34

*STATION AND OFFSET TO UPSTREAM END OF END SECTION
**FIELD VERIFY LOCATION AND ELEVATION