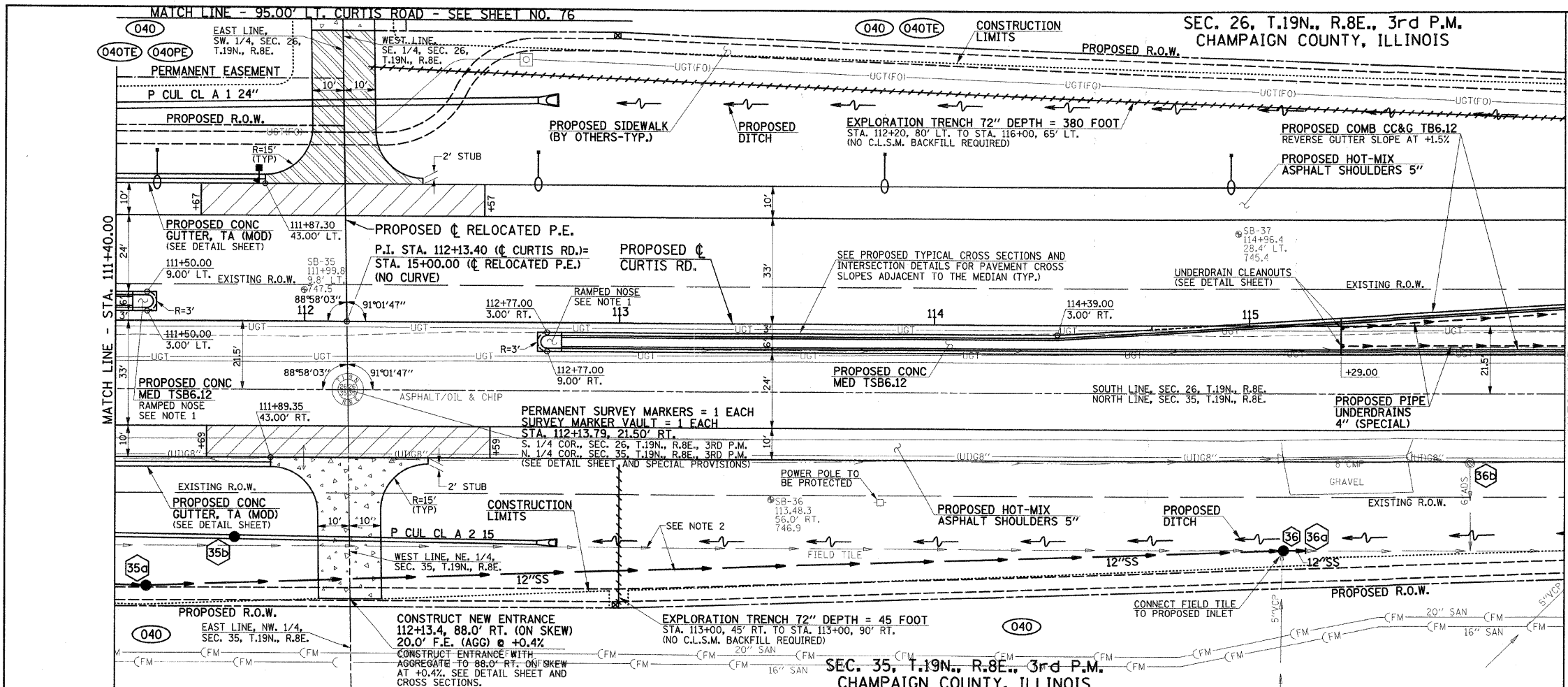
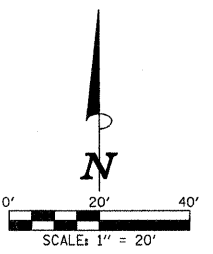


F.A.P. RTE.	SECTION	COUNTY	TOTAL SHEETS	SHEET NO.
807	00-00374-01-PV	CHAMPAIGN	242	57
STA. 111+40.00		TO STA. 116+00.00		
ILLINOIS F.A. PROJ. NO. RS-HPP-1805(00)				
CONTRACT NO. 91368				



- LEGEND**
- PROPOSED HOT-MIX ASPHALT SHOULDERS, 8"
  - PROPOSED PCC DRIVEWAY PAVEMENT (6" FOR P.E. - 8" FOR C.E.)
  - PROPOSED AGGREGATE SURFACE COURSE, TYPE B (8" THICK)
  - PROPOSED SODDING FOR DITCH LINING



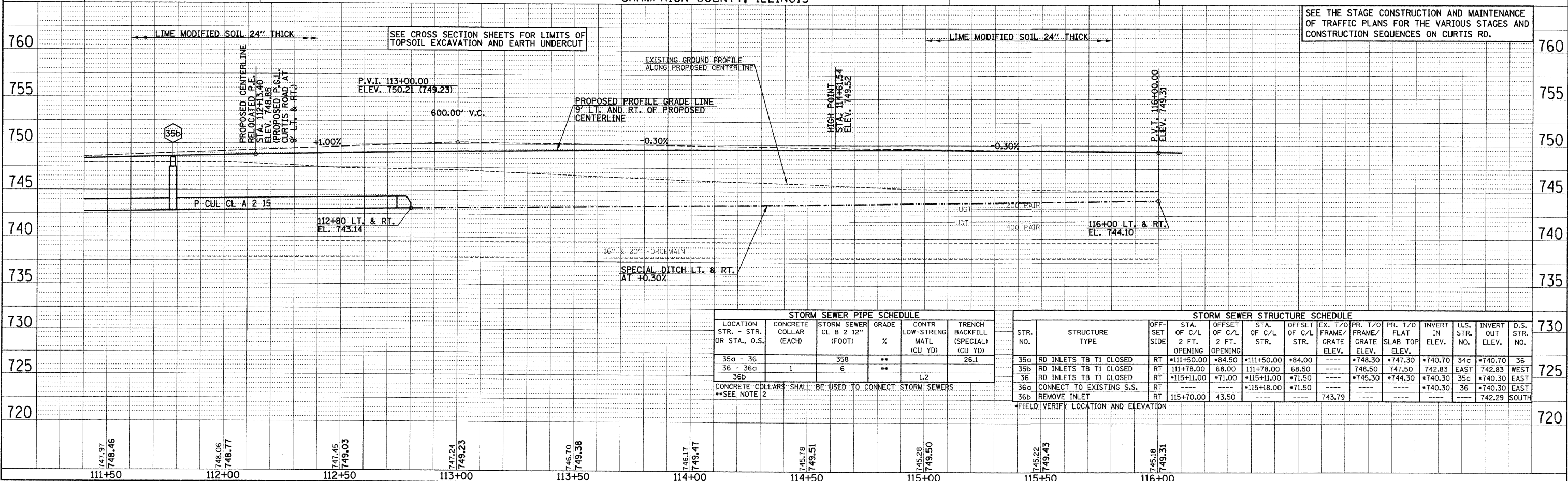
**FURNISHING AND ERECTING RIGHT-OF-WAY MARKERS = 2 EACH**  
 STA. 113+00.00, 91.50' LT.  
 STA. 113+00.00, 90.50' RT.

**NOTE 1**  
 THE RAMPED CONCRETE MEDIAN NOSES SHALL BE CONSTRUCTED IN ACCORDANCE WITH STD. 606301. THE RAMPED NOSES SHALL BE 6 FEET LONG MEASURED FROM THE END OF THE RAMP TO THE BACK OF THE CURB. THE RAMPED NOSES SHALL BE PAID FOR AS CONCRETE MEDIAN, TYPE SB-6.12.

**NOTE 2**  
 THE LOCATION AND SIZE OF THE EXISTING FIELD TILE IS UNKNOWN. THE CONTRACTOR SHALL PERFORM THE EXPLORATORY TRENCHING TO DETERMINE THE LOCATION AND DIRECTION OF FLOW OF THE FIELD TILE PRIOR TO CONSTRUCTING THE PROPOSED STORM SEWER SYSTEM. THE FINAL LOCATION, DEPTH AND METHOD OF OUTLETTING THE PROPOSED STORM SEWER SYSTEM WILL BE AS DIRECTED BY THE ENGINEER.

FOR REMOVAL/RELOCATION PLAN IN THIS AREA SEE SHEET NO'S. 37-38.

SEE SCHEDULE OF QUANTITIES FOR TYPICAL SECTION PAVEMENT PAY ITEMS AND THEIR LOCATIONS.



**STORM SEWER PIPE SCHEDULE**

LOCATION STR. - STR. OR STA., O.S.	CONCRETE COLLAR (EACH)	STORM SEWER CL B 2 12" (FOOT)	GRADE %	CONTR LOW-STRENGTH MATL (CU YD)	TRENCH BACKFILL (SPECIAL) (CU YD)
35a - 36		358	**		26.1
36 - 36a	1	6	**		
36b				1.2	

CONCRETE COLLARS SHALL BE USED TO CONNECT STORM SEWERS  
 \*\*SEE NOTE 2

**STORM SEWER STRUCTURE SCHEDULE**

STR. NO.	STRUCTURE TYPE	OFF-SET SIDE	STA. OF C/L 2 FT. OPENING	OFFSET OF C/L 2 FT. OPENING	STA. OF C/L STR.	OFFSET OF C/L STR.	EX. T/O FRAME/GRATE ELEV.	PR. T/O FRAME/GRATE ELEV.	PR. T/O FLAT SLAB TOP ELEV.	INVERT IN ELEV.	U.S. STR. NO.	INVERT OUT ELEV.	D.S. STR. NO.
35a	RD INLETS TB TI CLOSED	RT	*111+50.00	*84.50	*111+50.00	*84.00	---	*748.30	*747.30	*740.70	34a	*740.70	36
35b	RD INLETS TB TI CLOSED	RT	*111+78.00	68.00	*111+78.00	68.50	---	*748.50	*747.50	*742.83	EAST	*742.83	WEST
36	RD INLETS TB TI CLOSED	RT	*115+11.00	*71.00	*115+11.00	*71.50	---	*745.30	*744.30	*740.30	35a	*740.30	EAST
36a	CONNECT TO EXISTING S.S.	RT	---	---	*115+18.00	*71.50	---	*740.30	---	---	36	*740.30	EAST
36b	REMOVE INLET	RT	115+70.00	43.50	---	---	743.79	---	---	---	---	742.29	SOUTH

\*FIELD VERIFY LOCATION AND ELEVATION