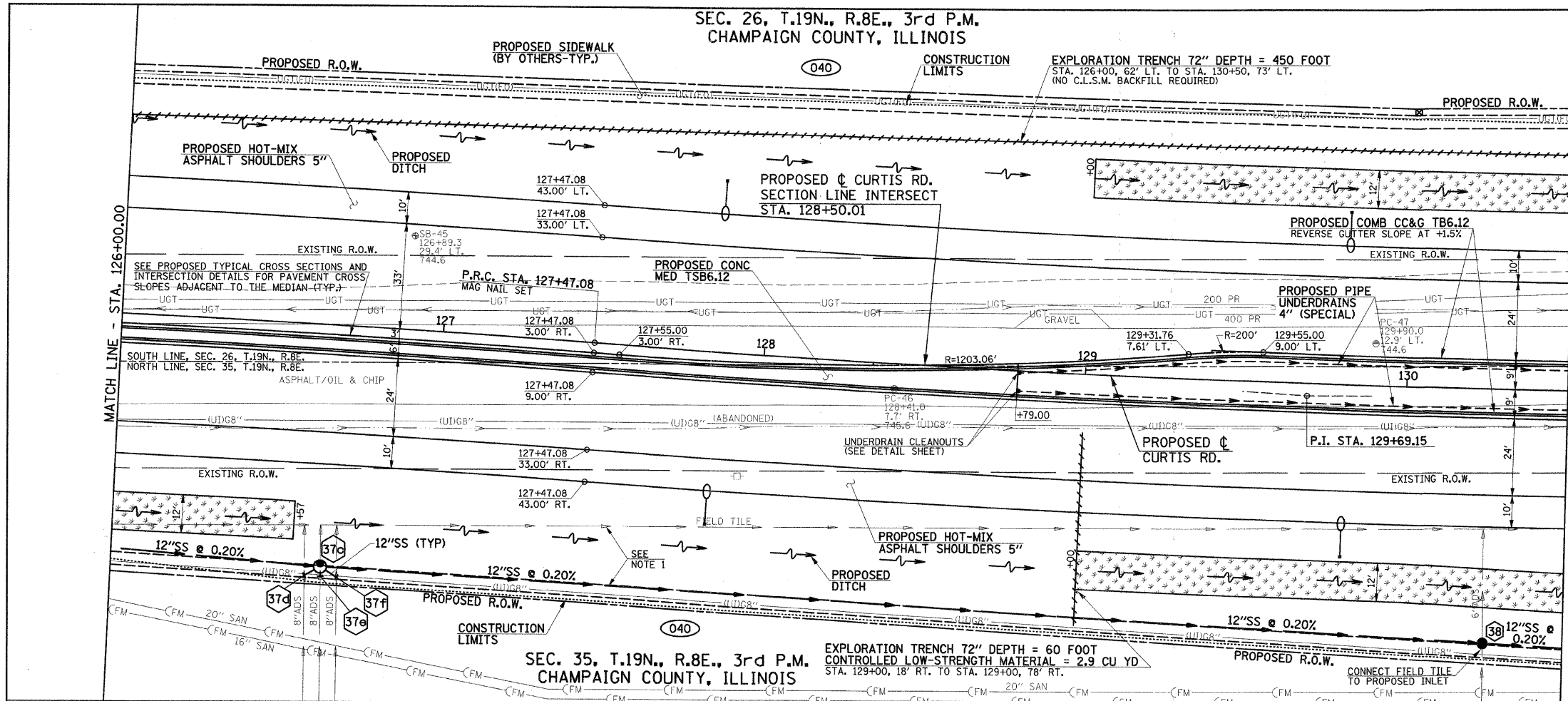


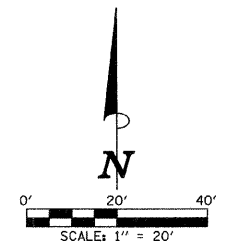
SEC. 26, T.19N., R.8E., 3rd P.M.
CHAMPAIGN COUNTY, ILLINOIS

DATE	
BY	
REVISIONS	
NO.	
DESCRIPTION	
DATE	
BY	
NO.	
DESCRIPTION	
DATE	
BY	
NO.	
DESCRIPTION	



PROPOSED CURTIS RD. CURVE DATA	PROPOSED CURTIS RD. CURVE DATA
P.I. STA. 125+25.18	P.I. STA. 129+69.15
$\Delta = 3^{\circ}56'16''$	$\Delta = 3^{\circ}56'16''$
$D = 0^{\circ}53'13''$	$D = 0^{\circ}53'13''$
$T = 222.07'$	$T = 222.07'$
$R = 6460.00'$	$R = 6460.00'$
$L = 443.97'$	$L = 443.97'$
$E = 3.82'$	$E = 3.82'$
P.C. STA. 123+03.11	P.R.C. STA. 127+47.08
P.R.C. STA. 127+47.08	P.T. STA. 131+91.04
S.E. = NONE	S.E. = NONE

F.A.P. RTE.	SECTION	COUNTY	TOTAL SHEETS	SHEET NO.
807	00-00374-01-PV	CHAMPAIGN	242	60
STA. 126+00.00		TO STA. 130+50.00		
ILLINOIS F.A. PROJ. NO. RS-HPP-1805(001)				
CONTRACT NO. 91368				



LEGEND
 PROPOSED SODDING FOR DITCH LINING

FURNISHING AND ERECTING RIGHT-OF-WAY MARKERS = 1 EACH
 STA. 130+00.00, 86.21' LT.

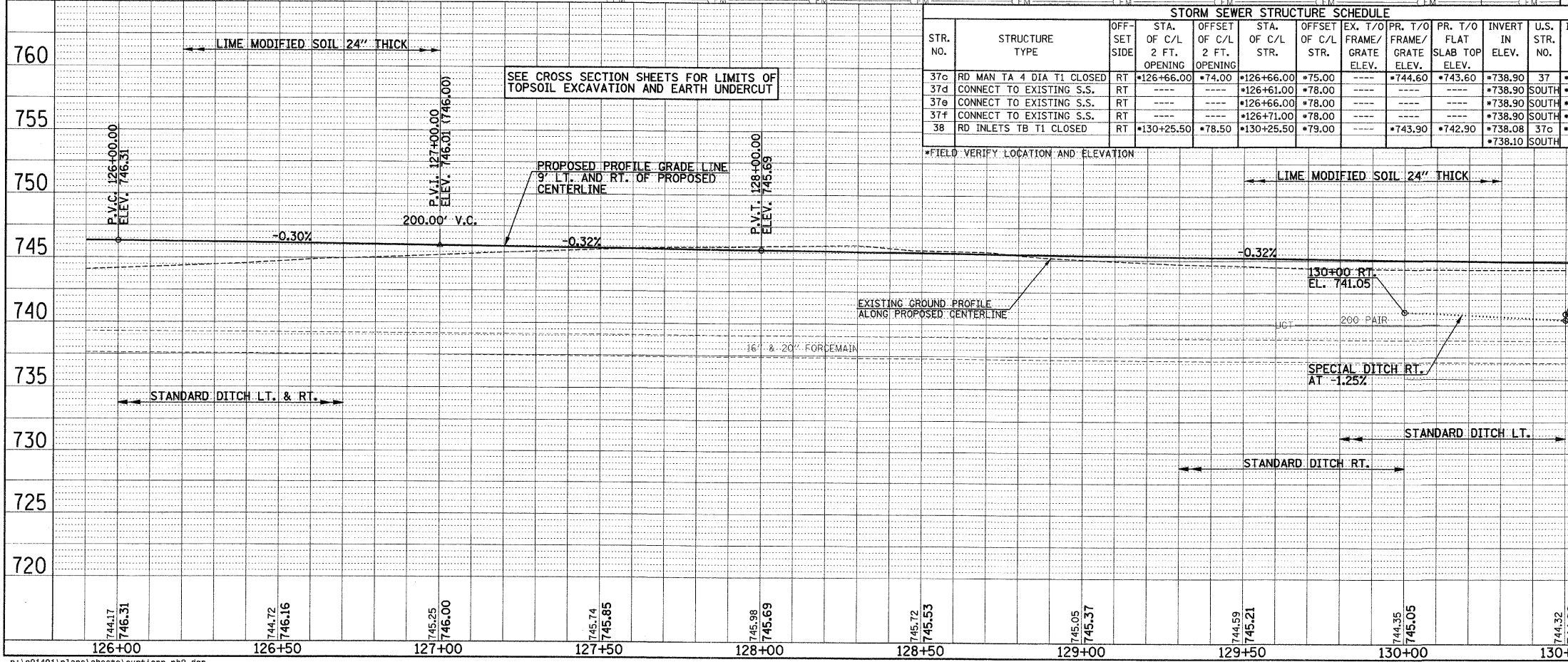
NOTE 1
 THE LOCATION AND SIZE OF THE EXISTING FIELD TILE IS UNKNOWN. THE CONTRACTOR SHALL PERFORM THE EXPLORATORY TRENCHING TO DETERMINE THE LOCATION AND DIRECTION OF FLOW OF THE FIELD TILE PRIOR TO CONSTRUCTING THE PROPOSED STORM SEWER SYSTEM. THE FINAL LOCATION, DEPTH AND METHOD OF OUTLETTING THE PROPOSED STORM SEWER SYSTEM WILL BE AS DIRECTED BY THE ENGINEER.

FOR REMOVAL/RELOCATION PLAN IN THIS AREA SEE SHEET NO. 39

SEE SCHEDULE OF QUANTITIES FOR TYPICAL SECTION PAVEMENT PAY ITEMS AND THEIR LOCATIONS.

SEE THE STAGE CONSTRUCTION AND MAINTENANCE OF TRAFFIC PLANS FOR THE VARIOUS STAGES AND CONSTRUCTION SEQUENCES ON CURTIS RD.

DATE	
BY	
REVISIONS	
NO.	
DESCRIPTION	
DATE	
BY	
NO.	
DESCRIPTION	



STR. NO.	STRUCTURE TYPE	OFF-SET SIDE	STA. OF C/L 2 FT. OPENING	OFFSET OF C/L 2 FT. OPENING	STA. OF C/L STR.	OFFSET OF C/L STR.	EX. T/O FRAME/GRATE ELEV.	PR. T/O FRAME/GRATE ELEV.	PR. T/O FLAT SLAB TOP ELEV.	INVERT IN ELEV.	U.S. STR. NO.	INVERT OUT ELEV.	D.S. STR. NO.
37c	RD MAN TA 4 DIA T1 CLOSED	RT	*126+66.00	*74.00	*126+66.00	*75.00	---	*744.60	*743.60	*738.90	37	*738.80	38
37d	CONNECT TO EXISTING S.S.	RT	---	---	*126+61.00	*78.00	---	---	---	*738.90	SOUTH	*738.90	37c
37e	CONNECT TO EXISTING S.S.	RT	---	---	*126+66.00	*78.00	---	---	---	*738.90	SOUTH	*738.90	37c
37f	CONNECT TO EXISTING S.S.	RT	---	---	*126+71.00	*78.00	---	---	---	*738.90	SOUTH	*738.90	37c
38	RD INLETS TB T1 CLOSED	RT	*130+25.50	*78.50	*130+25.50	*79.00	---	*743.90	*742.90	*738.08	37c	*738.00	38a

LOCATION STR. - STR. OR STA., O.S.	CONCRETE COLLAR (EACH)	STORM SEWER REM 6" (FOOT)	STORM SEWER REM 8" (FOOT)	STORM SEWER CL B 2 12" (FOOT)	GRADE %	CONTR LOW-STRENG MATL (CU YD)
37c - 37d	1		17	5	**	
37c - 37e	1		17	3	**	
37c - 37f	1		17	5	**	
37c - 38		360	358		**0.20	
38 - 38a			72		**0.20	
38 - 39		37	295			138.2