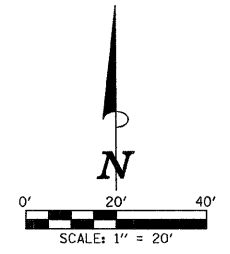


SEC. 25, T.19N., R.8E., 3rd P.M.
CHAMPAIGN COUNTY, ILLINOIS

F.A.P. RTE.	SECTION	COUNTY	TOTAL SHEETS	SHEET NO.
807	00-00374-01-PV	CHAMPAIGN	242	63
STA. 141+00.00		TO STA. 145+50.00		
ILLINOIS		F.A. PROJ. NO. RS-HPP-1805(001)		
CONTRACT NO. 91368				



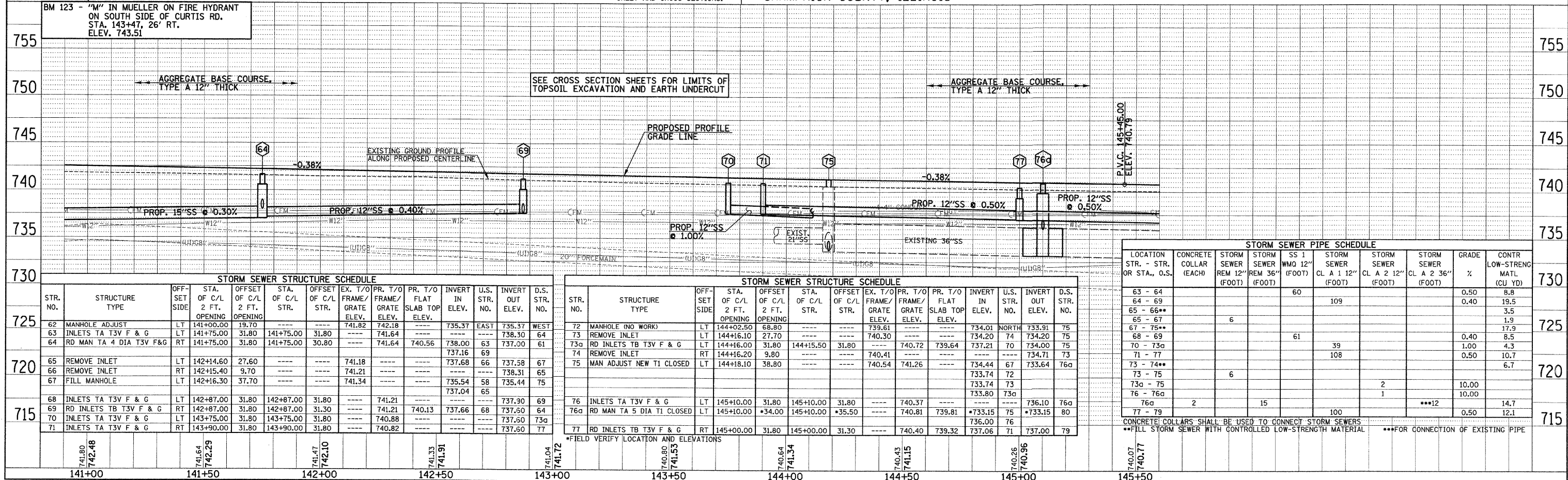
- LEGEND**
- PROPOSED PORTLAND CEMENT CONCRETE BASE COURSE 8"
 - PROPOSED PCC DRIVEWAY PAVEMENT (6" FOR P.E. - 8" FOR C.E.)
 - CLASS C PATCH - SEE REMOVAL/RELOCATION PLANS FOR LOCATIONS AND THICKNESS

FOR REMOVAL/RELOCATION PLAN IN THIS AREA SEE SHEET NO'S. 40-41.

SEE SCHEDULE OF QUANTITIES FOR TYPICAL SECTION PAVEMENT PAY ITEMS AND THEIR LOCATIONS.

SEE THE STAGE CONSTRUCTION AND MAINTENANCE OF TRAFFIC PLANS FOR THE VARIOUS STAGES AND CONSTRUCTION SEQUENCES ON CURTIS RD.

SEC. 36, T.19N., R.8E., 3rd P.M.
CHAMPAIGN COUNTY, ILLINOIS



STORM SEWER STRUCTURE SCHEDULE

STR. NO.	STRUCTURE TYPE	OFF-SET SIDE	STA. OF C/L	OFFSET OF C/L	STA. OF C/L	OFFSET OF C/L	EX. T/O FRAME/GRATE ELEV.	PR. T/O FRAME/GRATE ELEV.	PR. T/O FLAT SLAB TOP ELEV.	INVERT IN ELEV.	U.S. STR. NO.	INVERT OUT ELEV.	D.S. STR. NO.
62	MANHOLE ADJUST	LT	141+00.00	19.70	---	---	741.82	742.18	---	735.37	EAST	735.37	WEST
63	INLETS TA T3V F & G	LT	141+75.00	31.80	141+75.00	31.80	---	741.64	---	738.30	63	737.00	64
64	RD MAN TA 4 DIA T3V F&G	RT	141+75.00	31.80	141+75.00	30.80	---	741.64	740.56	738.00	63	737.00	61
65	REMOVE INLET	LT	142+14.60	27.60	---	---	741.18	---	---	737.68	66	737.58	67
66	REMOVE INLET	RT	142+15.40	9.70	---	---	741.21	---	---	738.31	65	738.31	65
67	FILL MANHOLE	LT	142+16.30	37.70	---	---	741.34	---	---	735.54	58	735.44	75
68	INLETS TA T3V F & G	LT	142+87.00	31.80	142+87.00	31.80	---	741.21	---	737.90	69	737.90	69
69	RD INLETS TB T3V F & G	RT	142+87.00	31.80	142+87.00	31.30	---	741.21	740.13	737.66	68	737.60	64
70	INLETS TA T3V F & G	LT	143+75.00	31.80	143+75.00	31.80	---	740.88	---	737.50	70	737.50	73a
71	INLETS TA T3V F & G	RT	143+90.00	31.80	143+90.00	31.80	---	740.82	---	737.60	71	737.60	77

STORM SEWER STRUCTURE SCHEDULE

STR. NO.	STRUCTURE TYPE	OFF-SET SIDE	STA. OF C/L	OFFSET OF C/L	STA. OF C/L	OFFSET OF C/L	EX. T/O FRAME/GRATE ELEV.	PR. T/O FRAME/GRATE ELEV.	PR. T/O FLAT SLAB TOP ELEV.	INVERT IN ELEV.	U.S. STR. NO.	INVERT OUT ELEV.	D.S. STR. NO.
72	MANHOLE (NO WORK)	LT	144+02.50	68.80	---	---	739.61	---	---	734.01	NORTH	733.91	75
73	REMOVE INLET	LT	144+16.10	27.70	---	---	740.30	---	---	734.20	74	734.20	75
73a	RD INLETS TB T3V F & G	LT	144+16.00	31.80	144+15.50	31.80	---	740.72	739.64	737.21	70	734.00	75
74	REMOVE INLET	RT	144+16.20	9.80	---	---	740.41	---	---	734.71	73	734.71	73
75	MAN ADJUST NEW TI CLOSED	LT	144+18.10	38.80	---	---	740.54	741.26	---	734.44	67	733.64	76a
76	INLETS TA T3V F & G	LT	145+10.00	31.80	145+10.00	31.80	---	740.37	---	733.74	72	733.74	72
76a	RD MAN TA 5 DIA TI CLOSED	LT	145+10.00	*34.00	145+10.00	*35.50	---	740.81	739.81	*733.15	75	*733.15	80
77	RD INLETS TB T3V F & G	RT	145+00.00	31.80	145+00.00	31.30	---	740.40	739.32	737.06	71	737.00	79

STORM SEWER PIPE SCHEDULE

LOCATION STR. - STR. OR STA., O.S.	CONCRETE COLLAR (EACH)	STORM SEWER REM 12" (FOOT)	STORM SEWER REM 36" (FOOT)	SS 1 WMO 12" (FOOT)	STORM SEWER CL A 1 12" (FOOT)	STORM SEWER CL A 2 12" (FOOT)	STORM SEWER CL A 2 36" (FOOT)	GRADE %	CONTR LOW-STRENG MATL (CU YD)
63 - 64				60				0.50	8.8
64 - 69					109			0.40	19.5
65 - 66**									3.5
65 - 67	6								1.9
67 - 75**									17.9
68 - 69				61				0.40	8.5
70 - 73a					39			1.00	4.3
71 - 77						108		0.50	10.7
73 - 74**									6.7
73 - 75									
73a - 75	6					2		10.00	
76 - 76a						1		10.00	
76a	2		15					**12	14.7
77 - 79							100	0.50	12.1