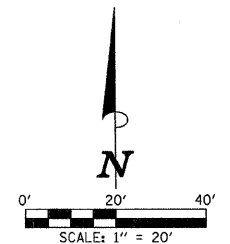


SEC. 25, T.19N., R.8E., 3rd P.M.  
CHAMPAIGN COUNTY, ILLINOIS

PROPOSED CURTIS RD.  
CURVE DATA  
P.I. STA. 149+19.91  
Δ = 2°31'45"  
D = 1°07'13"  
T = 112.91'  
R = 5114.73'  
L = 225.78'  
E = 1.25'  
P.C. STA. 148+07.00  
P.R.C. STA. 150+32.78  
S.E. = NONE

| F.A.P. RTE.        | SECTION                                  | COUNTY    | TOTAL SHEETS | SHEET NO. |
|--------------------|--|-----------|--------------|-----------|
| 807                | 00-00374-01-PV                           | CHAMPAIGN | 242          | 64        |
| STA. 145+50.00     | TO STA. 150+00.00                        |           |              |           |
| 799+40.00          | ILLINOIS F.A. PROJ. NO. RS-HPP-1805(001) |           |              |           |
| CONTRACT NO. 91368 |  |           |              |           |



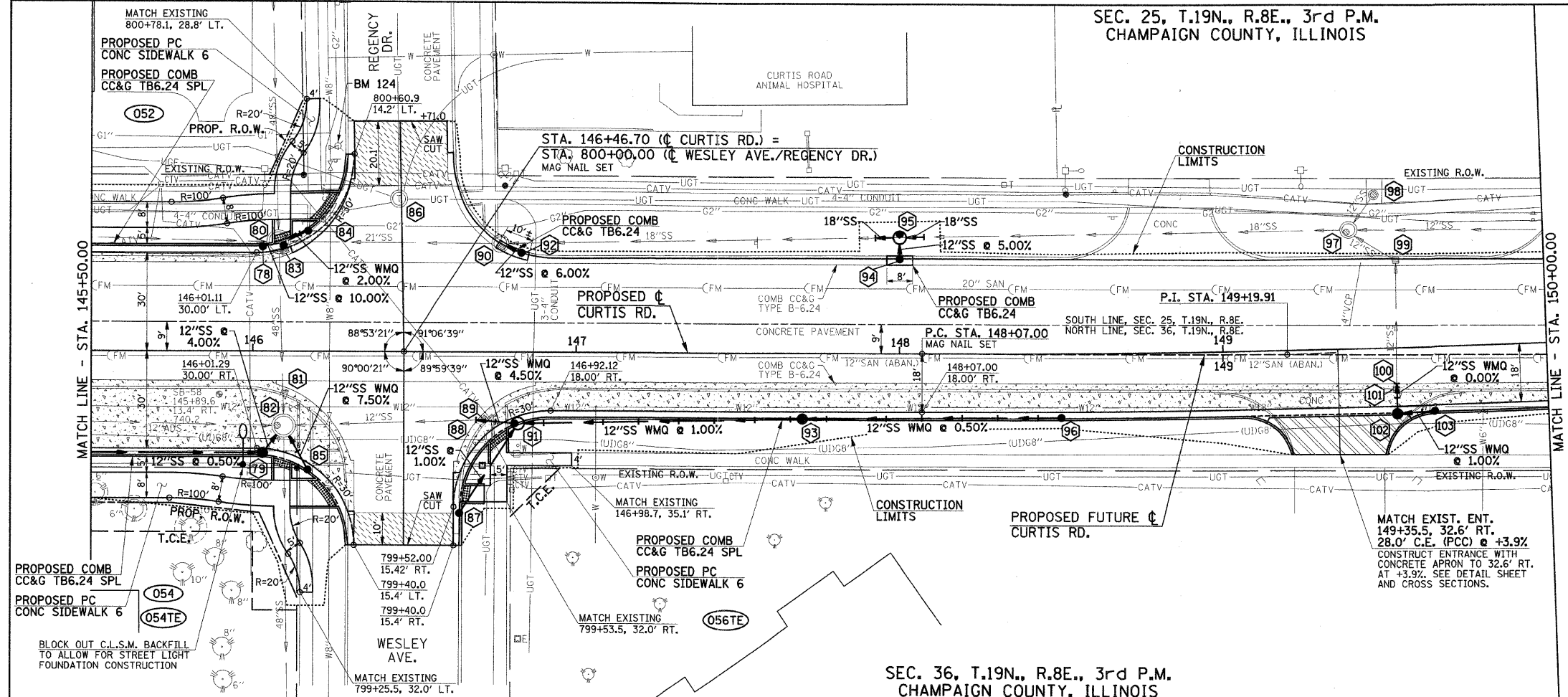
- LEGEND**
- PROPOSED PORTLAND CEMENT CONCRETE BASE COURSE 8"
  - PROPOSED PCC DRIVEWAY PAVEMENT (6' FOR P.E. - 8' FOR C.E.)
  - PROPOSED PORTLAND CEMENT CONCRETE SURFACE REMOVAL - BUTT JOINT (SEE DETAIL)
  - PROPOSED SIDEWALK RAMP DETECTABLE WARNINGS (SEE DETAIL SHEET)

FOR REMOVAL/RELOCATION PLAN IN THIS AREA SEE SHEET NO. 41

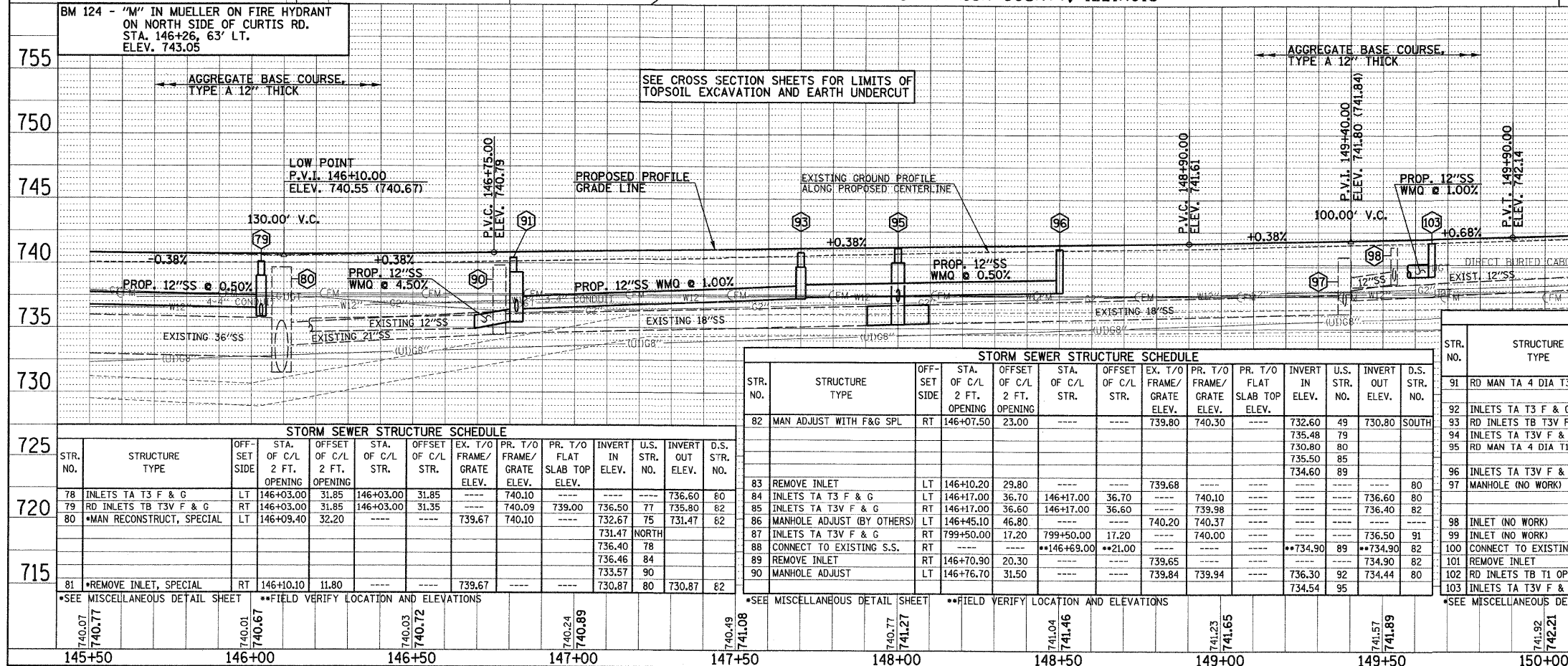
SEE SCHEDULE OF QUANTITIES FOR TYPICAL SECTION PAVEMENT PAY ITEMS AND THEIR LOCATIONS.

SEE PAVEMENT JOINTS AND INTERSECTION DETAILS FOR ADDITIONAL INFORMATION.

SEE THE STAGE CONSTRUCTION AND MAINTENANCE OF TRAFFIC PLANS FOR THE VARIOUS STAGES AND CONSTRUCTION SEQUENCES ON CURTIS RD.



SEC. 36, T.19N., R.8E., 3rd P.M.  
CHAMPAIGN COUNTY, ILLINOIS



| LOCATION STR. OR STA. OR S.S. | CONCRETE COLLAR (EACH) | STORM SEWER REM 18" (FOOT) | SS 1 WMQ 12" (FOOT) | SS 2 WMQ 12" (FOOT) | STORM SEWER CL A 1 12" (FOOT) | STORM SEWER CL A 2 12" (FOOT) | STORM SEWER CL A 2 18" (FOOT) | GRADE % | CONTR LOW-STRENG MATL (CU YD) |       |       |    |       |
|-------------------------------|------------------------|----------------------------|---------------------|---------------------|-------------------------------|-------------------------------|-------------------------------|---------|-------------------------------|-------|-------|----|-------|
|                               |                        |                            |                     |                     |                               |                               |                               |         |                               | 78-80 | 79-82 | 81 | 80-84 |
| 78-80                         |                        |                            |                     |                     | 2                             |                               |                               | 10.00   | 0.1                           |       |       |    |       |
| 79-82                         |                        |                            |                     |                     |                               | 8                             |                               | 4.00    | 1.6                           |       |       |    |       |
| 81                            |                        |                            |                     |                     |                               |                               |                               |         | 1.2                           |       |       |    |       |
| 80-84                         |                        |                            | 7                   |                     |                               |                               |                               | 2.00    | 0.8                           |       |       |    |       |
| 82-85                         |                        |                            |                     | 12                  |                               |                               |                               | 7.50    | 2.2                           |       |       |    |       |
| 87-91                         |                        |                            |                     |                     | 32                            |                               |                               | 1.00    | 9.9                           |       |       |    |       |
| 88-91                         | 1                      |                            |                     |                     | 11                            |                               |                               | 4.50    | 3.3                           |       |       |    |       |
| 90-92                         |                        |                            |                     |                     |                               | 5                             |                               | 6.00    | 1.1                           |       |       |    |       |
| 91-93                         |                        |                            | 87                  |                     |                               |                               |                               | 1.00    | 12.9                          |       |       |    |       |
| 93-96                         |                        |                            |                     | 77                  |                               |                               |                               | 0.50    | 8.4                           |       |       |    |       |
| 94-95                         |                        |                            |                     |                     |                               | 6                             |                               | 5.00    |                               |       |       |    |       |
| 95                            |                        |                            |                     |                     |                               |                               |                               | ***12   |                               |       |       |    |       |
| 100-102                       | 2                      | 15                         |                     |                     |                               |                               |                               | 0.00    | 0.3                           |       |       |    |       |
| 102-103                       |                        |                            |                     |                     |                               |                               |                               | 1.00    | 0.2                           |       |       |    |       |

CONCRETE COLLARS SHALL BE USED TO CONNECT STORM SEWERS  
\*\*\*FOR CONNECTION OF EXISTING PIPE

| STR. NO. | STRUCTURE TYPE            | OFF-SET SIDE | STA. OF C/L 2 FT. OPENING | OFFSET OF C/L 2 FT. OPENING | STA. OF C/L STR. | OFFSET OF C/L STR. | EX. T/O FRAME/GRATE ELEV. | PR. T/O FRAME/GRATE ELEV. | PR. T/O FLAT SLAB TOP ELEV. | INVERT IN ELEV. | U.S. STR. NO. | INVERT OUT ELEV. | D.S. STR. NO. |
|----------|---------------------------|--------------|---------------------------|-----------------------------|------------------|--------------------|---------------------------|---------------------------|-----------------------------|-----------------|---------------|------------------|---------------|
| 91       | RD MAN TA 4 DIA T3V F&G   | RT           | 146+81.00                 | 22.10                       | 146+82.00        | 22.10              | ---                       | 740.40                    | 739.32                      | 736.18          | 87            | 735.40           | 88            |
| 92       | INLETS TA T3 F & G        | LT           | 146+83.00                 | 30.25                       | 146+83.00        | 30.25              | 739.97                    | ---                       | ---                         | ---             | ---           | 736.60           | 90            |
| 93       | RD INLETS TB T3V F & G    | RT           | 147+70.00                 | 19.80                       | 147+70.00        | 20.30              | 740.84                    | 739.76                    | 737.41                      | 96              | 737.30        | 91               |               |
| 94       | INLETS TA T3V F & G       | LT           | 148+00.00                 | 28.80                       | 148+00.00        | 28.80              | 740.68                    | ---                       | ---                         | ---             | ---           | 737.40           | 95            |
| 95       | RD MAN TA 4 DIA T1 CLOSED | LT           | 148+00.00                 | **36.40                     | 148+00.00        | **35.40            | 741.20                    | 740.12                    | 737.10                      | 94              | **735.30      | 90               |               |
| 96       | INLETS TA T3V F & G       | RT           | 148+50.00                 | 19.80                       | 148+50.00        | 19.80              | ---                       | 741.14                    | ---                         | ---             | ---           | 737.80           | 93            |
| 97       | MANHOLE (NO WORK)         | LT           | 149+38.10                 | 37.40                       | ---              | ---                | 740.56                    | ---                       | ---                         | 736.86          | 98            | 736.16           | 95            |
| 98       | INLET (NO WORK)           | LT           | 149+46.40                 | 49.00                       | ---              | ---                | 740.85                    | ---                       | ---                         | ---             | ---           | 739.20           | 97            |
| 99       | INLET (NO WORK)           | LT           | 149+53.40                 | 27.80                       | ---              | ---                | 741.32                    | ---                       | ---                         | 738.82          | 101           | 738.52           | 97            |
| 100      | CONNECT TO EXISTING S.S.  | RT           | ---                       | ---                         | **149+53.50      | **10.90            | ---                       | ---                       | ---                         | **739.00        | 102           | **739.00         | 99            |
| 101      | REMOVE INLET              | RT           | 149+53.70                 | 9.60                        | ---              | ---                | 741.32                    | ---                       | ---                         | ---             | ---           | 739.02           | 99            |
| 102      | RD INLETS TB T1 OPEN      | RT           | 149+53.50                 | 19.80                       | 149+53.50        | 20.30              | ---                       | 741.60                    | 740.75                      | 739.01          | 103           | 739.00           | 100           |
| 103      | INLETS TA T3V F & G       | RT           | 149+65.00                 | 19.80                       | 149+65.00        | 19.80              | ---                       | 741.66                    | ---                         | ---             | ---           | 739.10           | 102           |