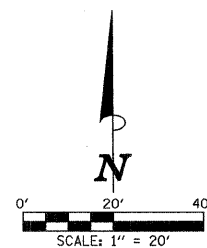


SEC. 25, T.19N., R.8E., 3rd P.M.  
CHAMPAIGN COUNTY, ILLINOIS

PROPOSED  $\phi$   
CURTIS RD.  
CURVE DATA  
P.I. STA. 149+19.91  
 $\Delta = 2^{\circ}31'45''$   
D = 1^{\circ}07'13''  
T = 112.91'  
R = 5114.73'  
L = 225.78'  
E = 1.25'  
P.C. STA. 148+07.00  
P.R.C. STA. 150+32.78  
S.E. = NONE

PROPOSED  $\phi$   
CURTIS RD.  
CURVE DATA  
P.I. STA. 151+46.48  
 $\Delta = 2^{\circ}31'45''$   
D = 1^{\circ}06'45''  
T = 113.70'  
R = 5150.73'  
L = 227.37'  
E = 1.25'  
P.R.C. STA. 150+32.78  
P.T. STA. 152+60.15  
S.E. = NONE

F.A.P. RTE.	SECTION	COUNTY	TOTAL SHEETS	SHEET NO.
807	00-00374-01-PV	CHAMPAIGN	242	65
STA. 150+00.00		TO STA. 154+00.00		
ILLINOIS F.A. PROJ. NO. RS-HPP-1805(00)				
CONTRACT NO. 91368				

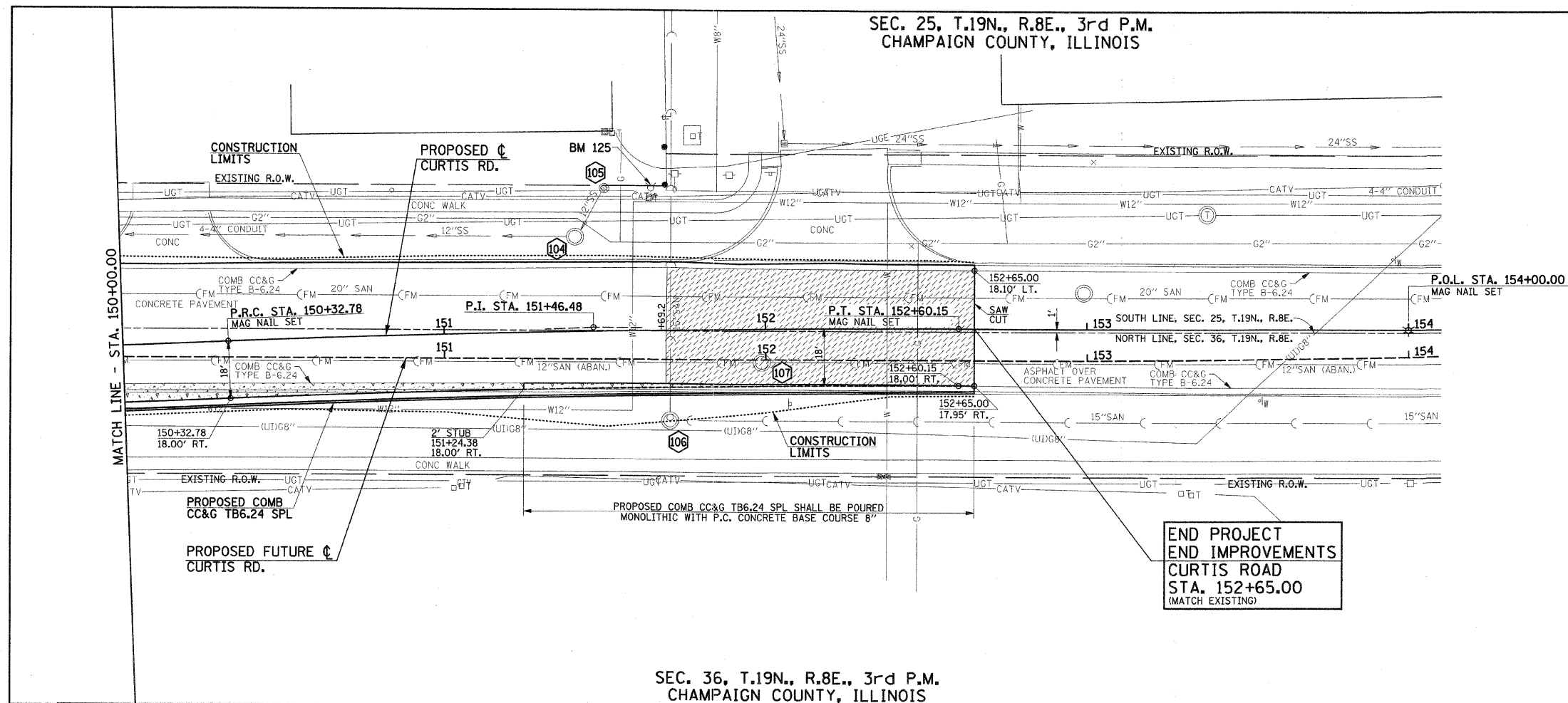


- LEGEND**
- PROPOSED PORTLAND CEMENT CONCRETE BASE COURSE 8"
  - PROPOSED HOT-MIX ASPHALT SURFACE REMOVAL - BUTT JOINT (SEE DETAIL)

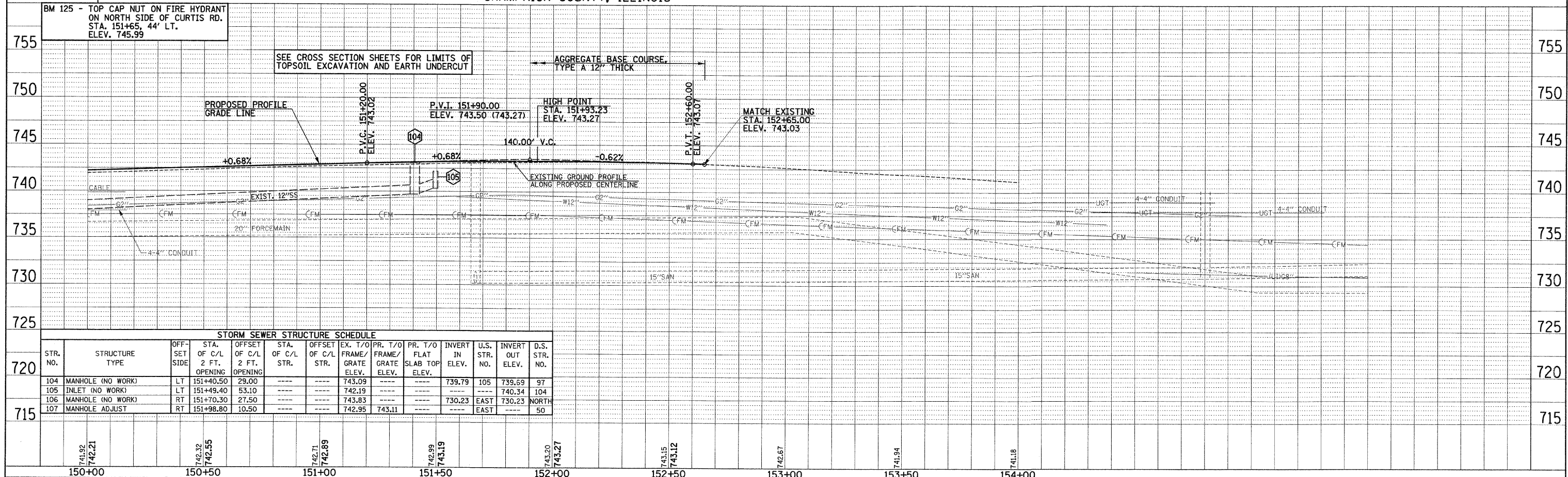
FOR REMOVAL/RELOCATION PLAN IN THIS AREA SEE SHEET NO. 41

SEE SCHEDULE OF QUANTITIES FOR TYPICAL SECTION PAVEMENT PAY ITEMS AND THEIR LOCATIONS.

SEE THE STAGE CONSTRUCTION AND MAINTENANCE OF TRAFFIC PLANS FOR THE VARIOUS STAGES AND CONSTRUCTION SEQUENCES ON CURTIS RD.



SEC. 36, T.19N., R.8E., 3rd P.M.  
CHAMPAIGN COUNTY, ILLINOIS



p:\c01401\plans\sheet\curtispp-ph2.dgn  
10/2/2008 9:03:16 AM