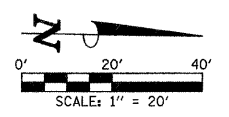


SEC. 27, T.19N., R.8E., 3rd P.M.  
CHAMPAIGN COUNTY, ILLINOIS

F.A.P. RTE.	SECTION	COUNTY	TOTAL SHEETS	SHEET NO.
807	00-00374-01-PV	CHAMPAIGN	242	68
STA. 493+50.00		TO STA. 497+00.00		
ILLINOIS F.A. PROJ. NO. RS-HPP-1805(001)				
CONTRACT NO. 91368				



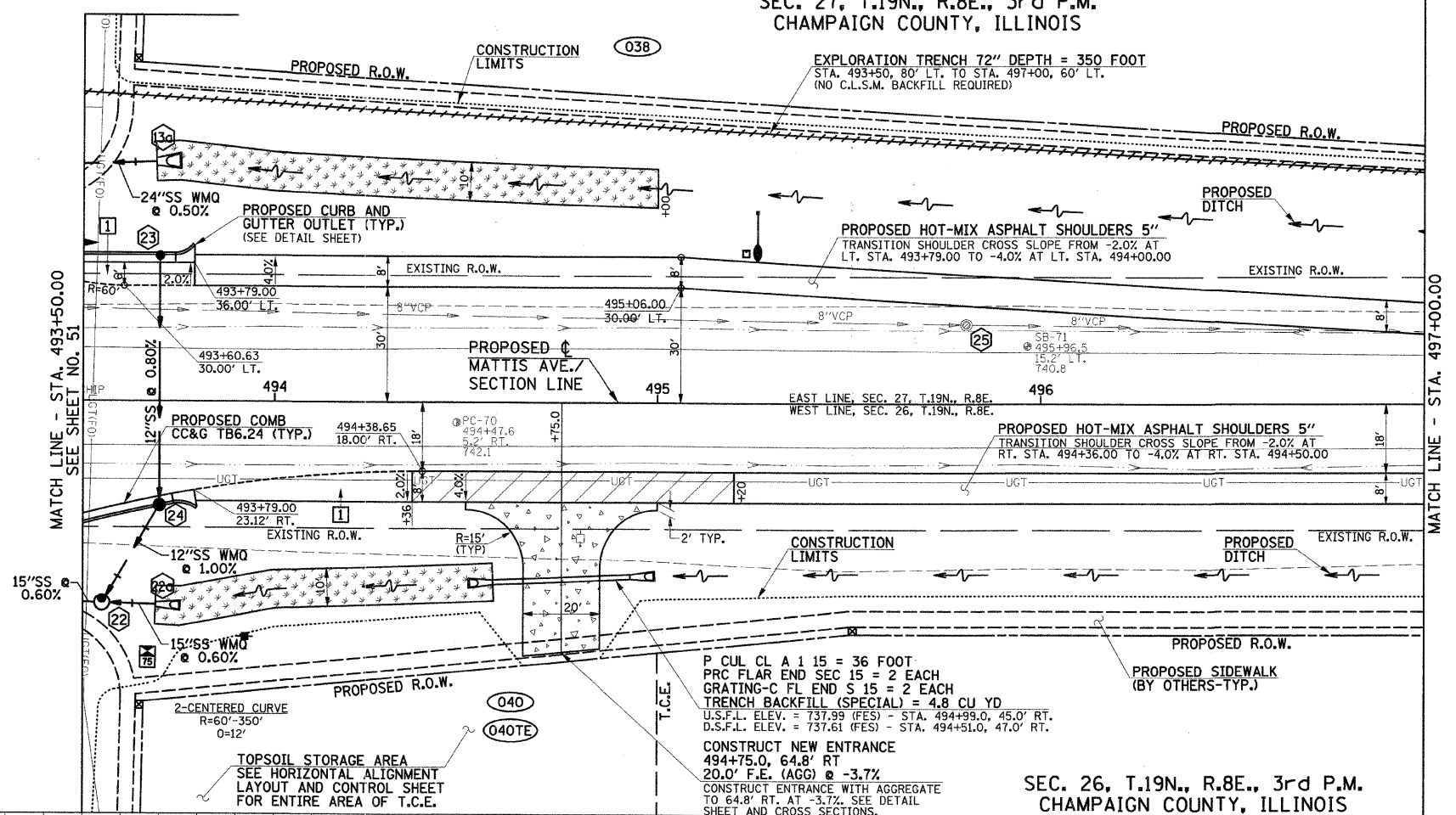
- LEGEND**
- 1 - PROPOSED PORTLAND CEMENT CONCRETE PAVEMENT 8" (JOINTED)
  - [Hatched Box] - PROPOSED HOT-MIX ASPHALT SHOULDERS, 8"
  - [Stippled Box] - PROPOSED AGGREGATE SURFACE COURSE, TYPE B (8" THICK)
  - [Cross-hatched Box] - PROPOSED SODDING FOR DITCH LINING

FURNISHING AND ERECTING RIGHT-OF-WAY MARKERS = 3 EACH  
 STA. 493+65.06, 87.50' LT.  
 STA. 493+65.84, 78.00' RT.  
 STA. 495+50.00, 60.00' RT.

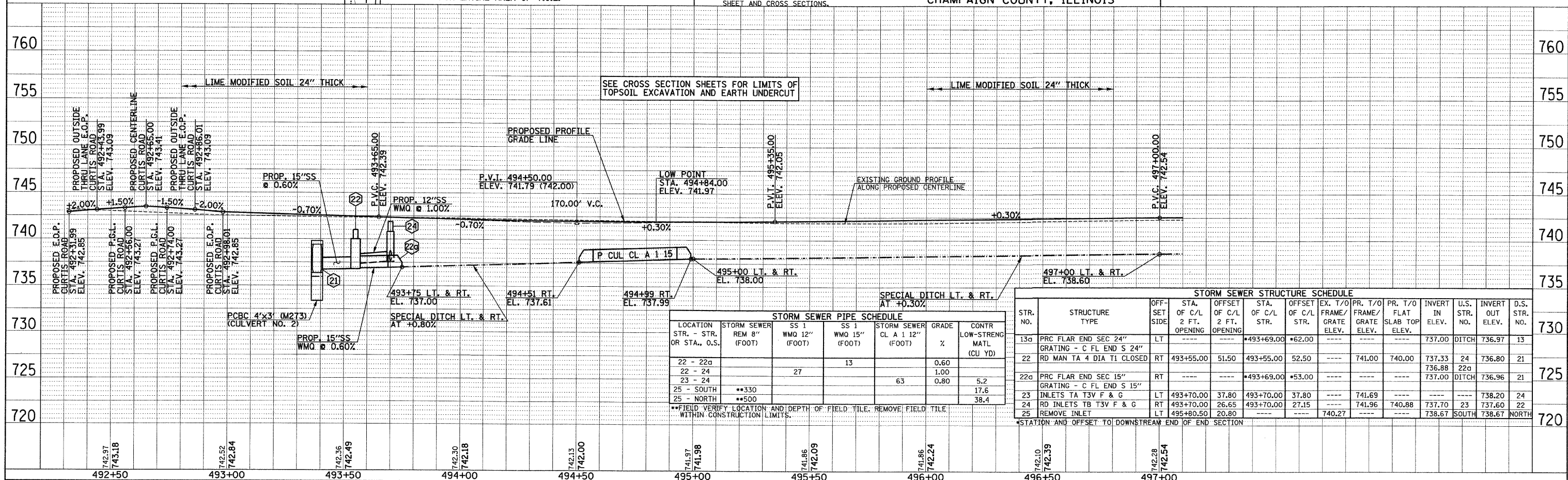
FOR REMOVAL/RELOCATION PLAN IN THIS AREA SEE SHEET NO. 43

SEE SCHEDULE OF QUANTITIES FOR TYPICAL SECTION PAVEMENT PAY ITEMS AND THEIR LOCATIONS.

SEE THE STAGE CONSTRUCTION AND MAINTENANCE OF TRAFFIC PLANS FOR THE VARIOUS STAGES AND CONSTRUCTION SEQUENCES ON MATTIS AVE.



SEC. 26, T.19N., R.8E., 3rd P.M.  
CHAMPAIGN COUNTY, ILLINOIS



**STORM SEWER PIPE SCHEDULE**

LOCATION STR. - STR. OR STA., O.S.	STORM SEWER REM 8" (FOOT)	SS 1 WMQ 12" (FOOT)	SS 1 WMQ 15" (FOOT)	STORM SEWER CL A 1 12" (FOOT)	GRADE %	CONTR LOW-STRENGTH MATL (CU YD)
22 - 22a			13		0.60	
22 - 24		27			1.00	
23 - 24				63	0.80	5.2
25 - SOUTH	**330					17.6
25 - NORTH	**500					38.4

\*\*FIELD VERIFY LOCATION AND DEPTH OF FIELD TILE. REMOVE FIELD TILE WITHIN CONSTRUCTION LIMITS.

**STORM SEWER STRUCTURE SCHEDULE**

STR. NO.	STRUCTURE TYPE	OFF-SET SIDE	STA. OF C/L 2 FT. OPENING	OFF-SET OF C/L 2 FT. STR.	STA. OF C/L STR.	OFF-SET OF C/L STR.	EX. T/O FRAME/GRATE ELEV.	PR. T/O FRAME/GRATE ELEV.	INVERT IN ELEV.	U.S. STR. NO.	INVERT OUT ELEV.	D.S. STR. NO.
13a	PRC FLAR END SEC 24" GRATING - C FL END S 24"	LT	---	---	*493+69.00	*62.00	---	---	737.00	DITCH	736.97	13
22	RD MAN TA 4 DIA T1 CLOSED	RT	493+55.00	51.50	493+55.00	52.50	---	741.00	740.00	24	736.88	22a
22a	PRC FLAR END SEC 15" GRATING - C FL END S 15"	RT	---	---	*493+69.00	*53.00	---	---	737.00	DITCH	736.96	21
23	INLETS TA T3V F & G	LT	493+70.00	37.80	493+70.00	37.80	---	741.69	---	---	738.20	24
24	RD INLETS TB T3V F & G	RT	493+70.00	26.65	493+70.00	27.15	---	741.96	740.88	23	737.60	22
25	REMOVE INLET	LT	495+80.50	20.80	---	---	---	740.27	---	---	738.67	NORTH

\*STATION AND OFFSET TO DOWNSTREAM END OF END SECTION