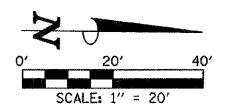


SEC. 26, T.19N., R.8E., 3rd P.M.
CHAMPAIGN COUNTY, ILLINOIS

F.A.P. RTE.	SECTION	COUNTY	TOTAL SHEETS	SHEET NO.
807	00-00374-01-PV	CHAMPAIGN	242	70
STA. 657+00.00		TO STA. 661+00.00		
ILLINOIS F.A. PROJ. NO. RS-HPP-1805(001)				
CONTRACT NO. 91368				

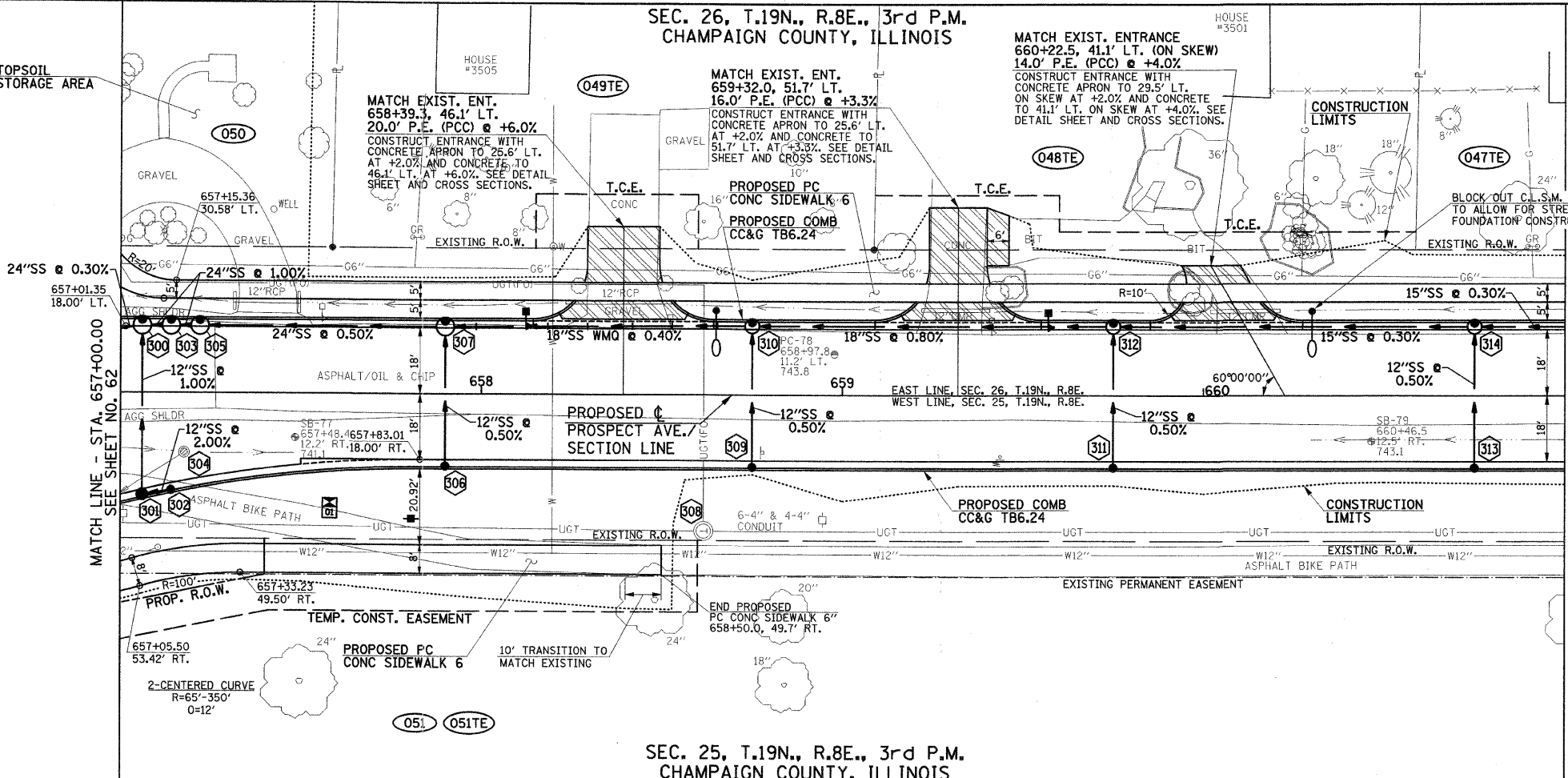


LEGEND
 PROPOSED PCC DRIVEWAY PAVEMENT
 (6" FOR P.E. - 8" FOR C.E.)

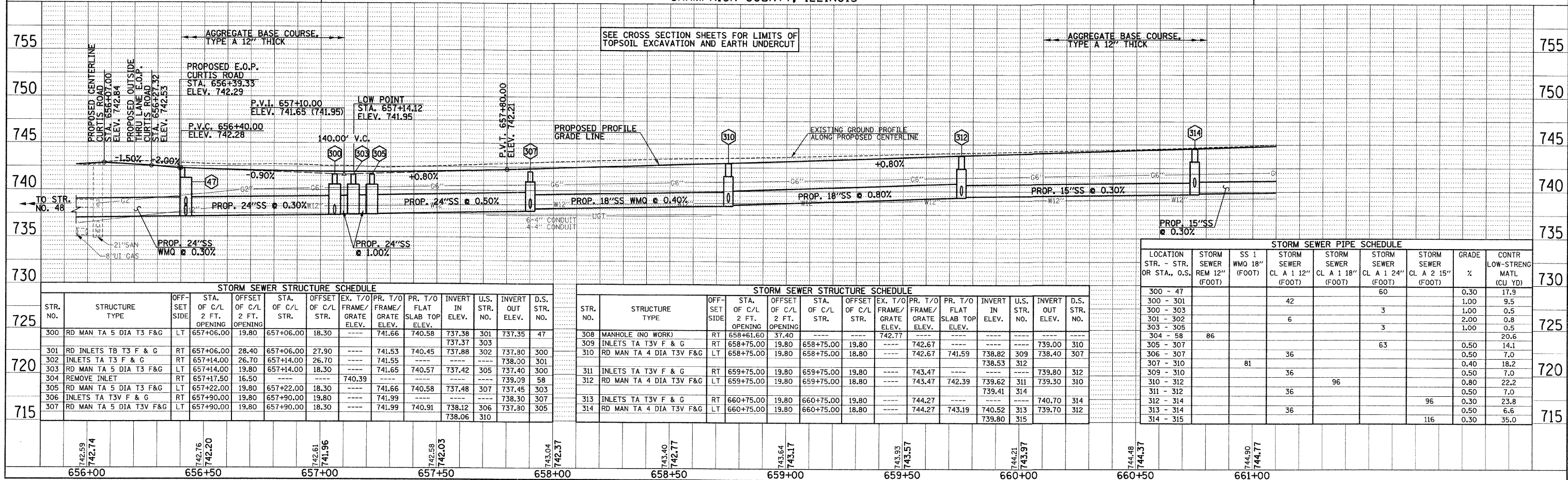
FOR REMOVAL/RELOCATION PLAN
IN THIS AREA SEE SHEET NO. 45

SEE SCHEDULE OF QUANTITIES FOR
TYPICAL SECTION PAVEMENT PAY ITEMS
AND THEIR LOCATIONS.

SEE THE STAGE CONSTRUCTION AND MAINTENANCE
OF TRAFFIC PLANS FOR THE VARIOUS STAGES AND
CONSTRUCTION SEQUENCES ON PROSPECT AVE.



SEC. 25, T.19N., R.8E., 3rd P.M.
CHAMPAIGN COUNTY, ILLINOIS



STORM SEWER STRUCTURE SCHEDULE

STR. NO.	STRUCTURE TYPE	OFF-SET SIDE	STA. OF C/L	OFFSET OF C/L	STA. OF C/L	OFFSET OF C/L	EX. T/O	PR. T/O	PR. T/O	INVERT IN	U.S. STR. NO.	INVERT OUT	D.S. STR. NO.
300	RD MAN TA 5 DIA T3 F&G	LT	657+06.00	19.80	657+06.00	18.30	---	741.66	740.58	737.38	301	737.35	47
301	RD INLETS TB T3 F & G	RT	657+06.00	28.40	657+06.00	27.90	---	741.53	740.45	737.88	302	737.80	300
302	INLETS TA T3 F & G	RT	657+14.00	26.70	657+14.00	26.70	---	741.55	---	---	---	738.00	301
303	RD MAN TA 5 DIA T3 F&G	LT	657+14.00	19.80	657+14.00	18.30	---	741.65	740.57	737.42	305	737.40	300
304	REMOVE INLET	RT	657+17.50	16.50	---	---	740.39	---	---	---	---	739.09	58
305	RD MAN TA 5 DIA T3 F&G	LT	657+22.00	19.80	657+22.00	18.30	---	741.66	740.58	737.48	307	737.45	303
306	INLETS TA T3V F & G	RT	657+90.00	19.80	657+90.00	19.80	---	741.99	---	---	---	738.30	307
307	RD MAN TA 5 DIA T3V F&G	LT	657+90.00	19.80	657+90.00	18.30	---	741.99	740.91	738.12	306	737.30	305

STORM SEWER STRUCTURE SCHEDULE

STR. NO.	STRUCTURE TYPE	OFF-SET SIDE	STA. OF C/L	OFFSET OF C/L	STA. OF C/L	OFFSET OF C/L	EX. T/O	PR. T/O	PR. T/O	INVERT IN	U.S. STR. NO.	INVERT OUT	D.S. STR. NO.
308	MANHOLE (NO WORK)	RT	658+61.60	37.40	---	---	---	742.77	---	---	---	---	---
309	INLETS TA T3V F & G	RT	658+75.00	19.80	658+75.00	19.80	---	742.67	---	---	---	739.00	310
310	RD MAN TA 4 DIA T3V F&G	LT	658+75.00	19.80	658+75.00	18.80	---	742.67	741.59	738.82	309	738.40	307
311	INLETS TA T3V F & G	RT	659+75.00	19.80	659+75.00	19.80	---	743.47	---	---	---	739.80	312
312	RD MAN TA 4 DIA T3V F&G	LT	659+75.00	19.80	659+75.00	18.80	---	743.47	742.39	739.62	311	739.30	310
313	INLETS TA T3V F & G	RT	660+75.00	19.80	660+75.00	19.80	---	744.27	---	---	---	740.70	314
314	RD MAN TA 4 DIA T3V F&G	LT	660+75.00	19.80	660+75.00	18.80	---	744.27	743.19	740.52	313	739.70	312

STORM SEWER PIPE SCHEDULE

LOCATION STR. - STR. OR STA., O.S.	STORM SEWER REM 12" (FOOT)	SS 1 WMQ 18" (FOOT)	STORM SEWER CL A 1 12" (FOOT)	STORM SEWER CL A 1 18" (FOOT)	STORM SEWER CL A 1 24" (FOOT)	STORM SEWER CL A 2 15" (FOOT)	GRADE %	CONTR LOW-STRENG MATL (CU YD)
300 - 47					60		0.30	17.9
300 - 301			42				1.00	9.5
300 - 303					3		1.00	0.5
301 - 302			6				2.00	0.8
303 - 305					3		1.00	0.5
304 - 58	86							20.6
305 - 307					63		0.50	14.1
306 - 307			36				0.50	7.0
307 - 310		81					0.40	18.2
309 - 310			36				0.50	7.0
310 - 312				96			0.80	22.2
311 - 312			36				0.50	7.0
312 - 314					96		0.30	23.8
313 - 314			36				0.50	6.6
314 - 315					116		0.30	35.0