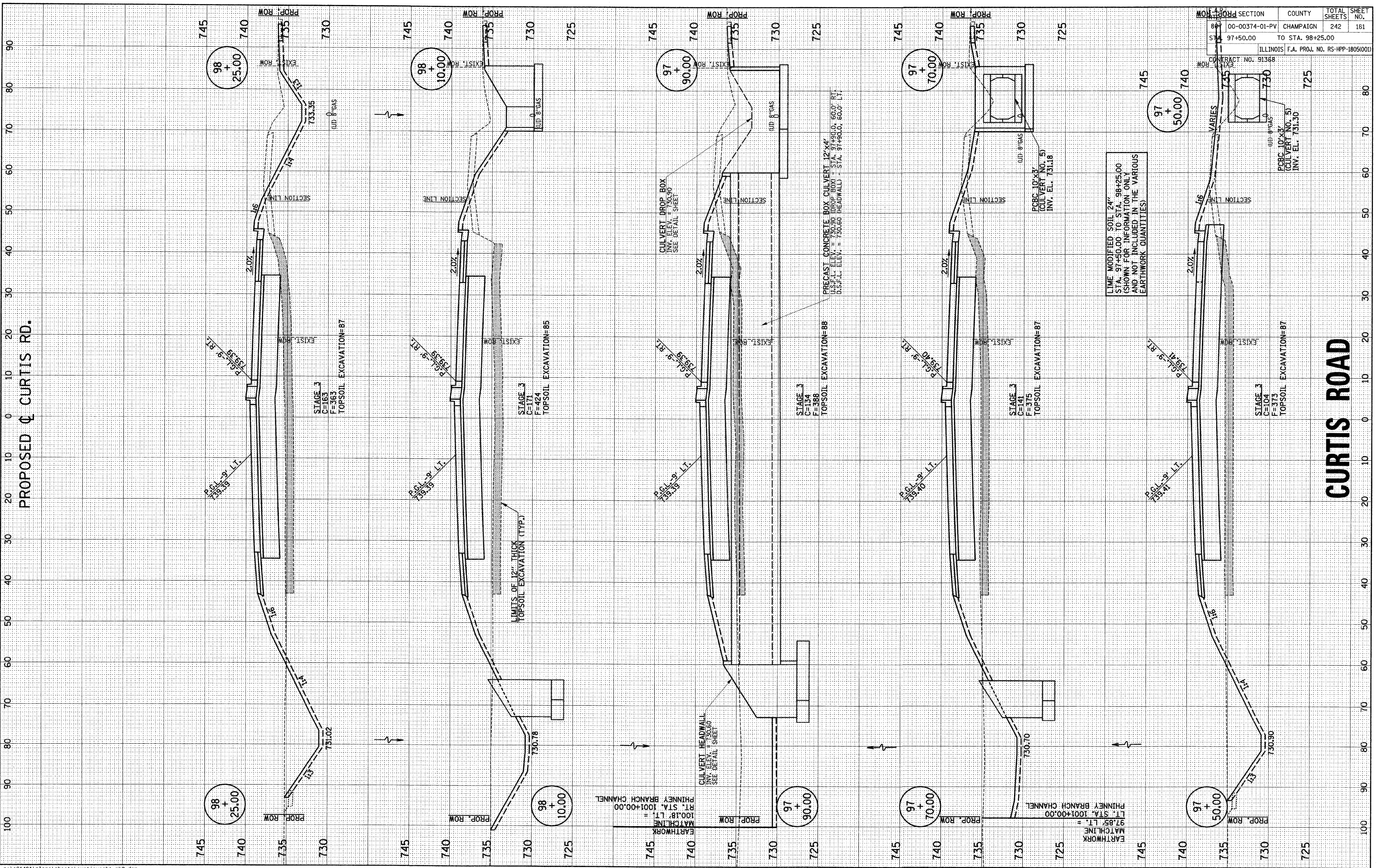


FINAL SURVEY	DATE
NOTE BOOK	BY
AREAS CHECKED	
NO.	

ORIGINAL SURVEY	DATE
NOTE BOOK	BY
AREAS CHECKED	
NO.	



PROPOSED CURTIS RD.

CURTIS ROAD

SECTION	COUNTY	TOTAL SHEETS	SHEET NO.
88	CHAMPAIGN	242	181
STA. 97+50.00	TO STA. 98+25.00		
ILLINOIS F.A. PROJ. NO. RS-HPP-1805/001			
CONTRACT NO. 91368			

LIME MODIFIED SOIL 24"
 STA. 97+50.00 TO STA. 98+25.00
 (SHOWN FOR INFORMATION ONLY
 AND NOT INCLUDED IN THE VARIOUS
 EARTHWORK QUANTITIES)

PRECAST CONCRETE BOX CULVERT 12'x4'
 U.S.F.L. ELEV. = 730.90 (PROP. BOX) STA. 97+90.0, 66.0 RT.
 O.S.F.L. ELEV. = 730.60 (HEADWALL) STA. 97+90.0, 66.0 LT.

EARTHWORK
 MATCHLINE = 97.85' LT.
 LT. STA. 100+00.00
 PHINNEY BRANCH CHANNEL

EARTHWORK
 MATCHLINE = 97.85' LT.
 LT. STA. 100+00.00
 PHINNEY BRANCH CHANNEL

p:\c01401\plans\sheet\curtisxsh2-ph2.dgn
 10/3/2008 8:06:22 AM