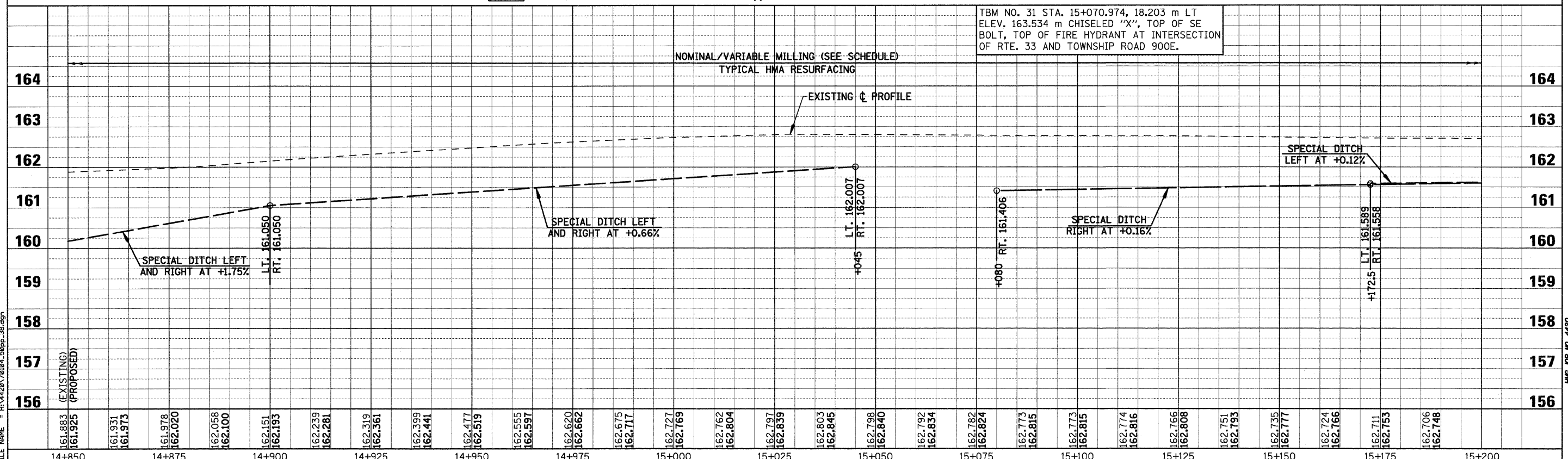
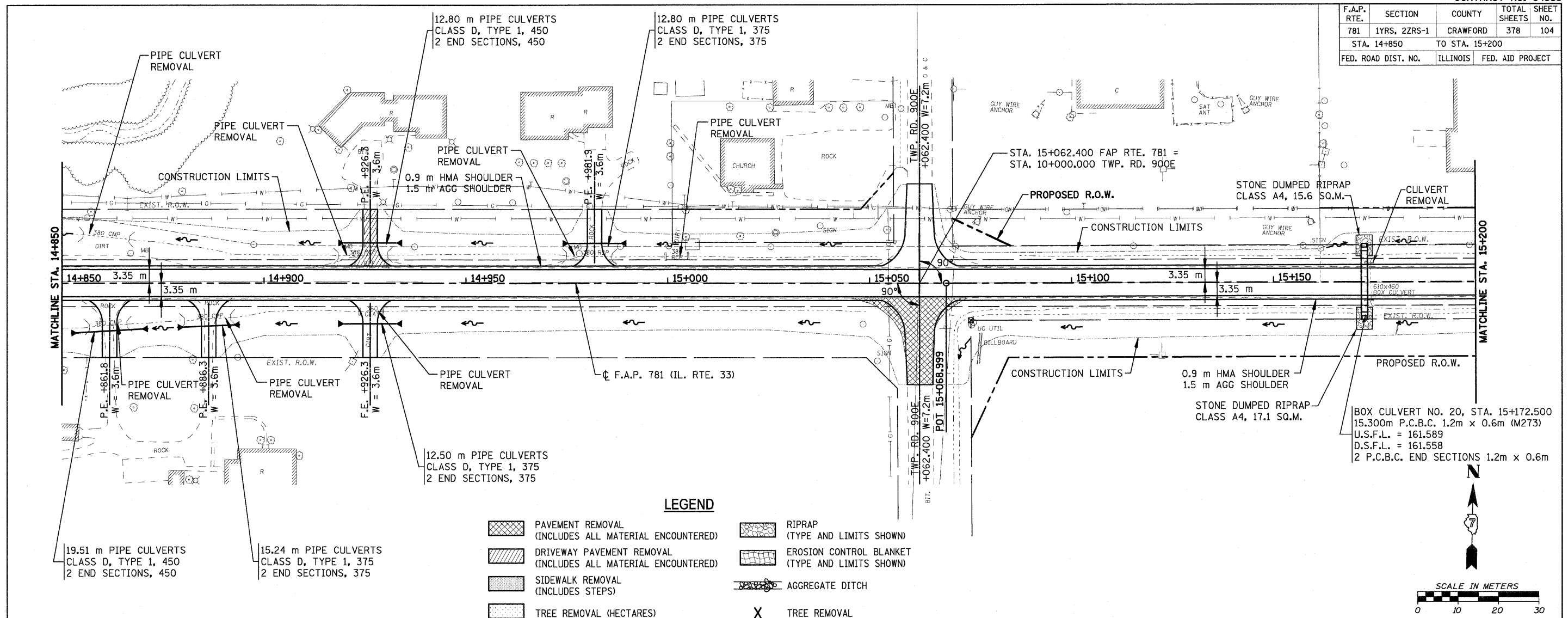


F.A.P. RTE.	SECTION	COUNTY	TOTAL SHEETS	SHEET NO.
781	1YRS, 2ZRS-1	CRAWFORD	378	104
STA. 14+850		TO STA. 15+200		
FED. ROAD DIST. NO.	ILLINOIS	FED. AID PROJECT		



TBM NO. 31 STA. 15+070.974, 18.203 m LT ELEV. 163.534 m CHISELED "X", TOP OF SE BOLT, TOP OF FIRE HYDRANT AT INTERSECTION OF RTE. 33 AND TOWNSHIP ROAD 900E.