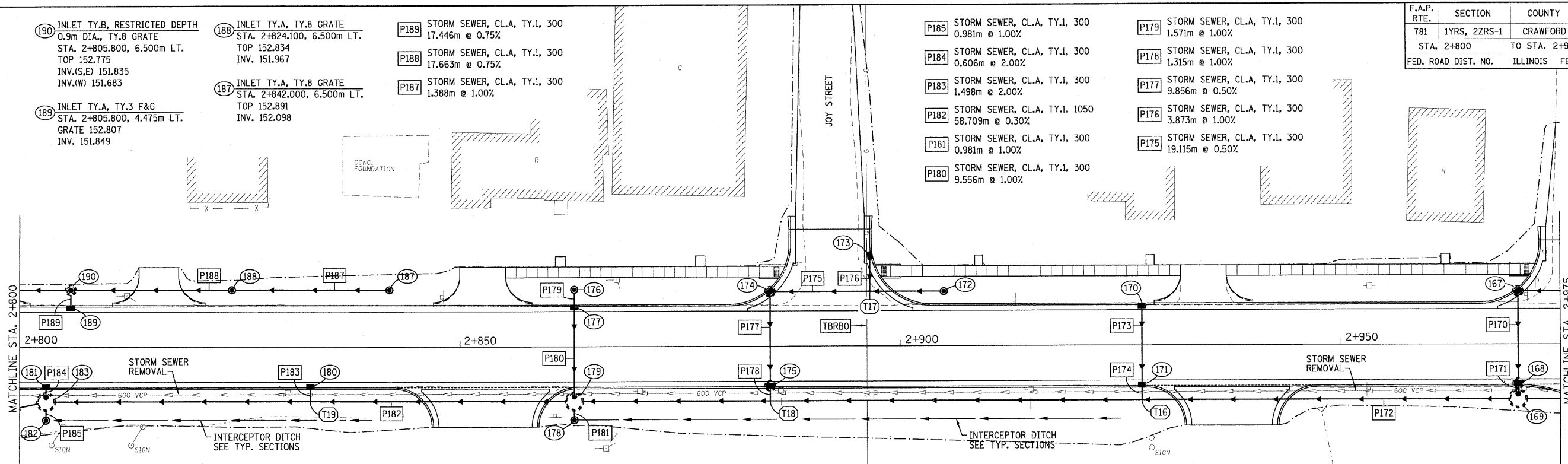
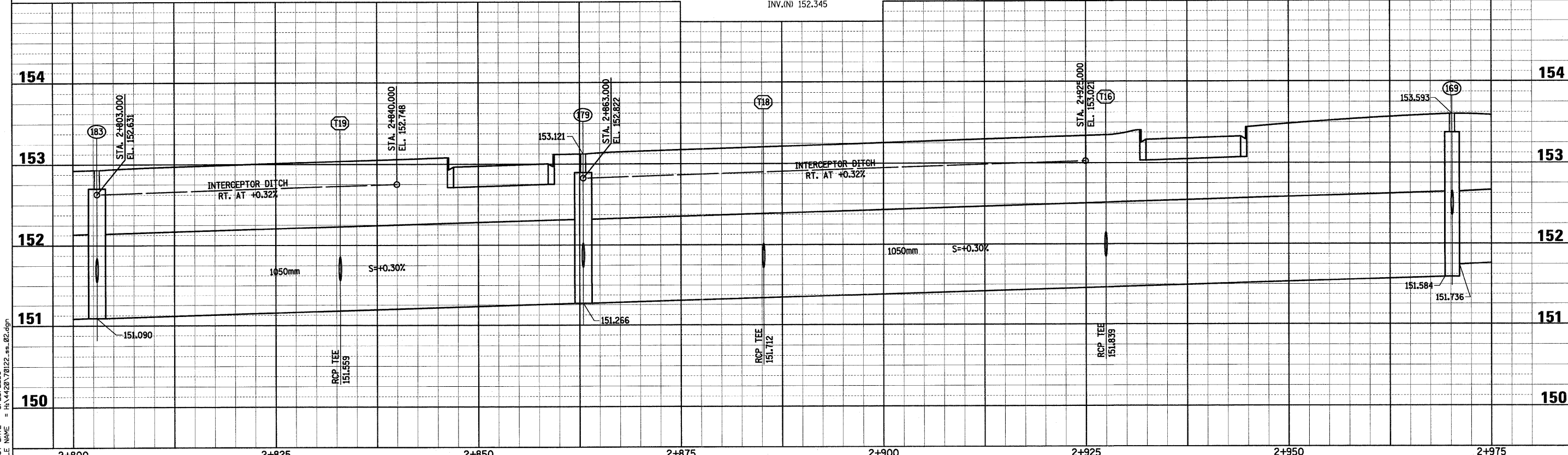
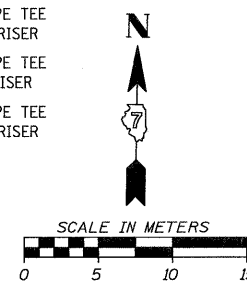


F.A.P. RTE.	SECTION	COUNTY	TOTAL SHEETS	SHEET NO.
781	1YRS, 2ZRS-1	CRAWFORD	378	122
STA. 2+800		TO STA. 2+975		
FED. ROAD DIST. NO.	ILLINOIS	FED. AID PROJECT		



- 189 INLET TY.A, TY.3 F&G
STA. 2+805.800, 4.475m LT.
GRATE 152.807
INV. 151.849
- 188 INLET TY.A, TY.8 GRATE
STA. 2+824.100, 6.500m LT.
TOP 152.834
INV. 151.967
- 187 INLET TY.A, TY.8 GRATE
STA. 2+842.000, 6.500m LT.
TOP 152.891
INV. 152.098
- 186 INLET TY.B, RESTRICTED DEPTH
0.9m DIA., TY.8 GRATE
STA. 2+805.800, 6.500m LT.
TOP 152.775
INV.(S,E) 151.835
INV.(W) 151.683
- 185 STORM SEWER, CL.A, TY.1, 300
0.981m @ 1.00%
- 184 STORM SEWER, CL.A, TY.1, 300
0.606m @ 2.00%
- 183 STORM SEWER, CL.A, TY.1, 300
1.498m @ 2.00%
- 182 STORM SEWER, CL.A, TY.1, 1050
58.709m @ 0.30%
- 181 STORM SEWER, CL.A, TY.1, 300
0.981m @ 1.00%
- 180 STORM SEWER, CL.A, TY.1, 300
9.556m @ 1.00%
- 179 STORM SEWER, CL.A, TY.1, 300
1.571m @ 1.00%
- 178 STORM SEWER, CL.A, TY.1, 300
1.315m @ 1.00%
- 177 STORM SEWER, CL.A, TY.1, 300
9.856m @ 0.50%
- 176 STORM SEWER, CL.A, TY.1, 300
3.873m @ 1.00%
- 175 STORM SEWER, CL.A, TY.1, 300
19.115m @ 0.50%
- 174 INLET TY.A, TY.3 F&G
STA. 2+885.248, 6.200m LT.
GRATE 153.027
INV.(E,S) 151.774
- 173 INLET TY.A, TY.3 F&G
STA. 2+896.595, 10.300m LT.
TOP 153.064
INV. 151.868
- 172 INLET TY.A, TY.3 F&G
STA. 2+927.500, 4.475m RT.
GRATE 153.196
INV. 151.869
- 171 INLET TY.A, TY.3 F&G
STA. 2+927.500, 4.475m RT.
GRATE 153.345
INV.(N,S) 152.349
- 170 INLET TY.A, TY.3 F&G
STA. 2+970.205, 6.000m LT.
GRATE 153.357
INV.(E,S) 152.397
- 169 MH. TY.A, RESTRICTED DEPTH
1.8m DIA., TY.1 FRAME, CL. LID
STA. 2+803.000, 6.200m RT.
SEE DETAIL FOR FRAME OFFSET
TOP 152.930
INV.(E,SW) 151.090
INV.(N,S) 151.547
- 168 MH. TY.A, RESTRICTED DEPTH
1.8m DIA., TY.1 FRAME, CL. LID
STA. 2+833.000, 4.475m RT.
GRATE 152.893
INV. 151.589
- 167 MH. TY.A, RESTRICTED DEPTH
1.8m DIA., TY.1 FRAME, CL. LID
STA. 2+863.000, 6.200m RT.
SEE DETAIL FOR FRAME OFFSET
TOP 153.121
INV.(E,SW) 151.266
INV.(N,S) 151.723
- 166 INLET TY.B, RESTRICTED DEPTH
0.9m DIA., TY.3 F&G
STA. 2+970.205, 6.000m LT.
GRATE 153.357
INV.(E,S) 152.397
- 165 INLET TY.B, RESTRICTED DEPTH
0.9m DIA., TY.3 F&G
STA. 2+970.205, 4.475m RT.
GRATE 153.345
INV.(N,S) 152.349
- 164 REINFORCED CONC. PIPE TEE
1050 PIPE WITH 300 RISER
- 163 REINFORCED CONC. PIPE TEE
1050 PIPE WITH 300 RISER
- 162 REINFORCED CONC. PIPE TEE
300 PIPE WITH 300 RISER
- 161 REINFORCED CONC. PIPE TEE
1050 PIPE WITH 300 RISER



Sheet: 2
Angle: 1.0118
Chain: P_IL33

PLOT DATE = 3/29/2008
FILE NAME = H:\4420\70122_02.dgn

HMG JOB NO. 4420