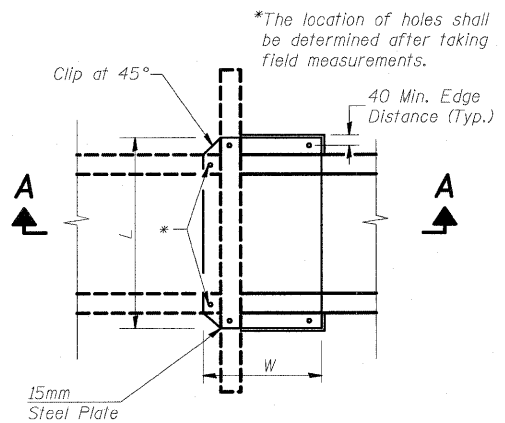


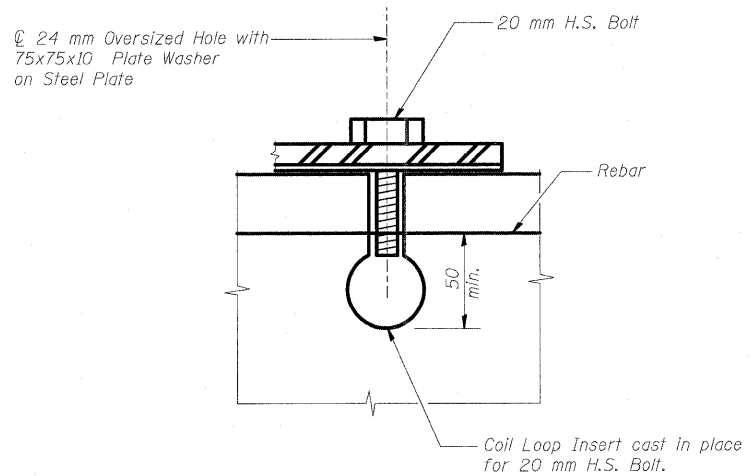
F.A.P. RTE.	SECTION	COUNTY	TOTAL SHEETS	SHEET NO.
781	1YRS, 2ZRS-1	CRAWFORD	378	199
STA.		TO STA.		
FED. ROAD DIST. NO.		ILLINOIS	FED. AID PROJECT	



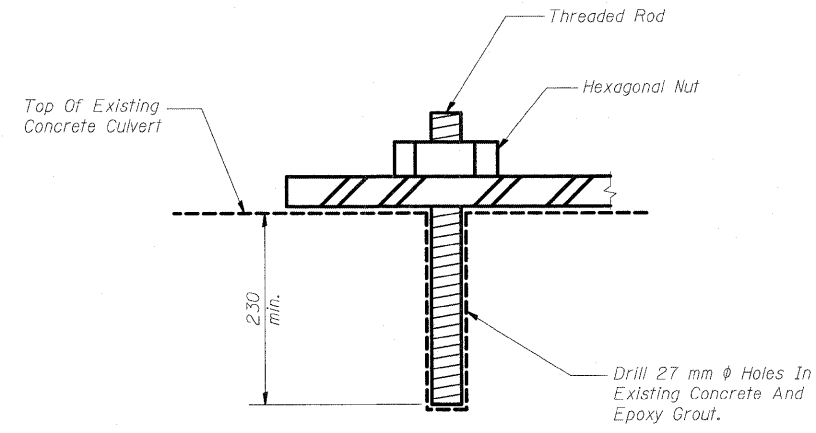
**PLAN  
DETAIL OF STEEL PLATE  
ATTACHMENT**

Box No.	Location	Size L x W
1	Upstream Collar	1500 x 700 **
4	Downstream Collar	1500 x 700 **

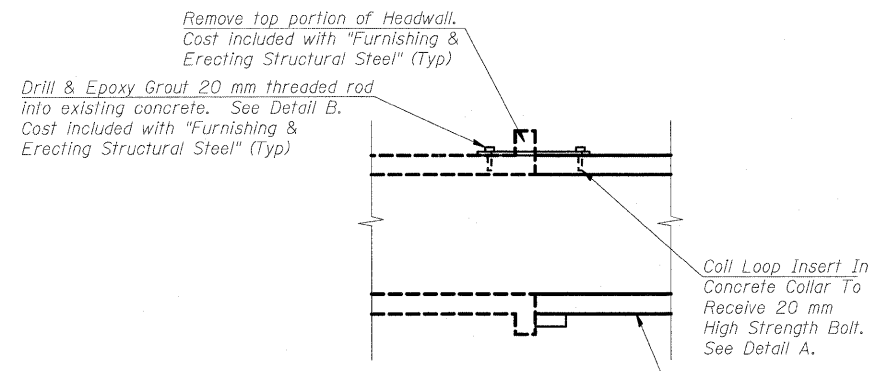
\*\*Contractor to verify dimensions based on actual culvert size provided by the fabricator.



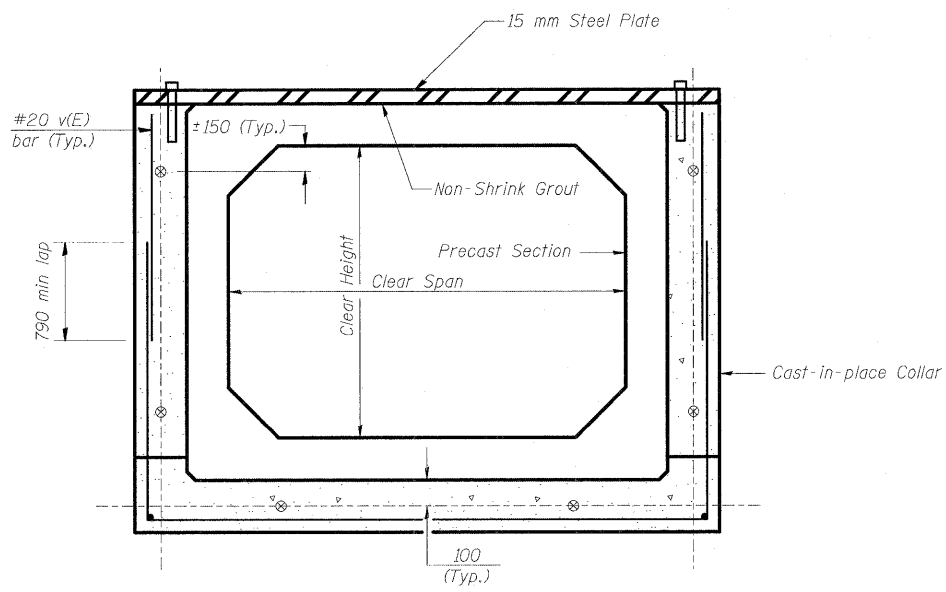
**DETAIL A**



**DETAIL B**



**SECTION A-A**



**MODIFIED COLLAR DETAIL WITH  
STEEL PLATE AT TOP**

See Sheet S17 of 19 for Collar Details and Reinforcement Bar List.

**NOTES**

The Steel Plate & Hardware shall be Galvanized in accordance with AASHTO M232, AASHTO M111 and ASTM A385.

PLOT DATE = 3/20/2008  
FILE NAME = H:\14420\14420.5 (Lin\_Eng)\design\_files\12-18-2006\15-18.dgn

REVISIONS	
NAME	DATE

ILLINOIS DEPARTMENT OF TRANSPORTATION  
BOX CULVERT EXTENSIONS  
MISCELLANEOUS DETAILS

SCALE NONE  
DATE DECEMBER 10, 2006  
DRAWN BY MLB  
CHECKED BY MTH