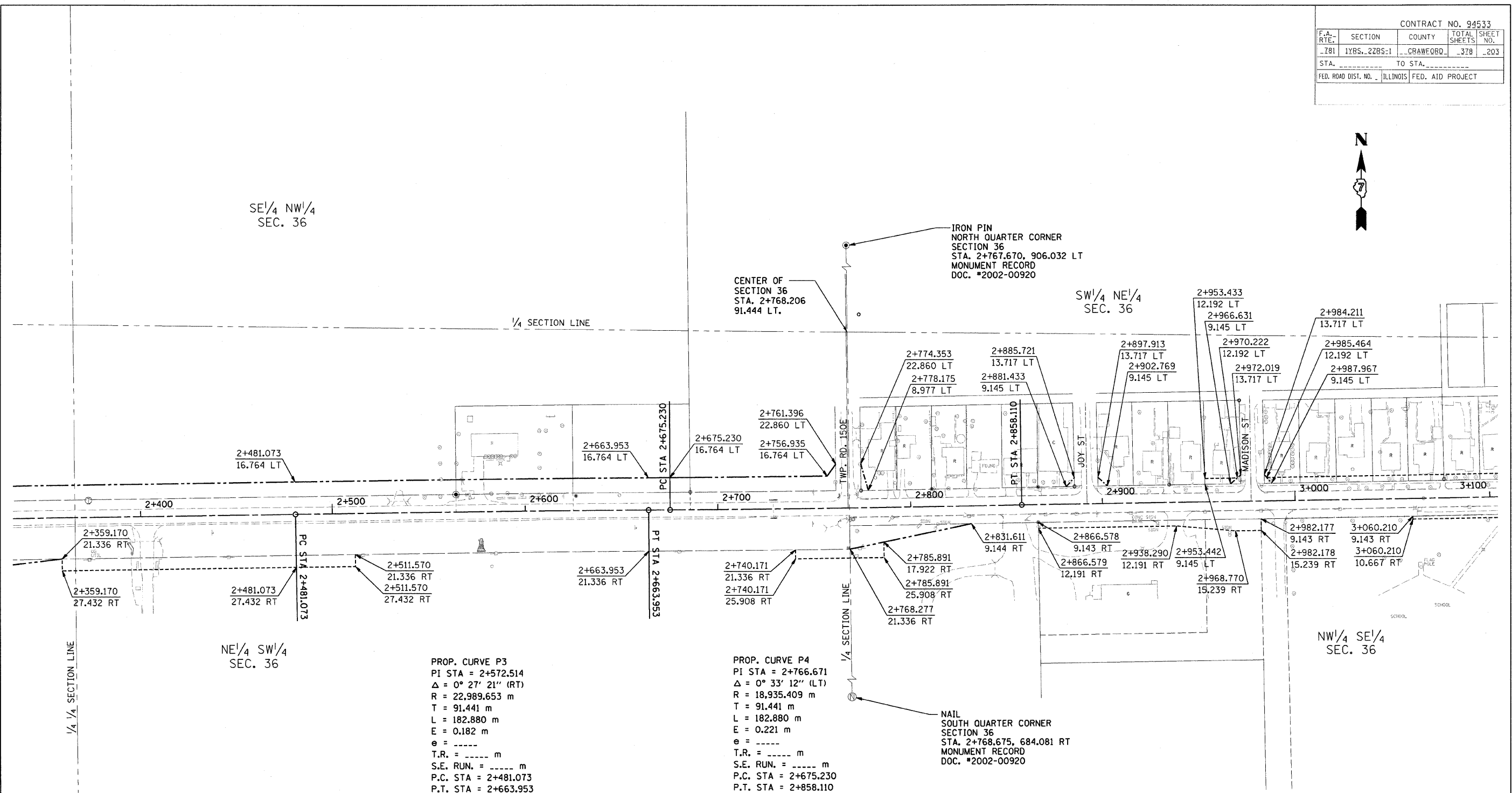


CONTRACT NO. 94533				
F.A. RTE.	SECTION	COUNTY	TOTAL SHEETS	SHEET NO.
781	1YRS., 2ZRS-1	CRAWFORD	378	203
STA.		TO STA.		
FED. ROAD DIST. NO. ILLINOIS FED. AID PROJECT				



NE 1/4 SW 1/4
SEC. 36

PROP. CURVE P3
 PI STA = 2+572.514
 $\Delta = 0^\circ 27' 21''$ (RT)
 R = 22,989.653 m
 T = 91.441 m
 L = 182.880 m
 E = 0.182 m
 e = -----
 T.R. = ----- m
 S.E. RUN. = ----- m
 P.C. STA = 2+481.073
 P.T. STA = 2+663.953

PROP. CURVE P4
 PI STA = 2+766.671
 $\Delta = 0^\circ 33' 12''$ (LT)
 R = 18,935.409 m
 T = 91.441 m
 L = 182.880 m
 E = 0.221 m
 e = -----
 T.R. = ----- m
 S.E. RUN. = ----- m
 P.C. STA = 2+675.230
 P.T. STA = 2+858.110

FOR INFORMATION ONLY

THESE METRIC RIGHT-OF-WAY PLANS ARE FOR INFORMATION ONLY. THEY WERE DEVELOPED FROM THE OFFICIAL ENGLISH VERSION OF THE RIGHT-OF-WAY PLANS. STATIONING AND DIMENSIONS CONVERTED TO METRIC. FINAL RIGHT-OF-WAY SHALL BE DETERMINED BY THE ORIGINAL ENGLISH PLANS.

RIGHT OF WAY PLANS	
FAP ROUTE 781	
PROJECT	SECTION 1YRS, 2ZRS-1
STATION 2+360	TO
STATION 3+100	
COUNTY CRAWFORD	
SCALE 1:1000	SHEET 3 OF 22