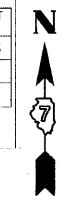


F.A. RTE.	SECTION	COUNTY	TOTAL SHEETS	SHEET NO.
781	1YRS, 2ZRS-1	CRAWFORD	378	213
STA.	TO STA.			
FED. ROAD DIST. NO.	ILLINOIS FED. AID PROJECT			

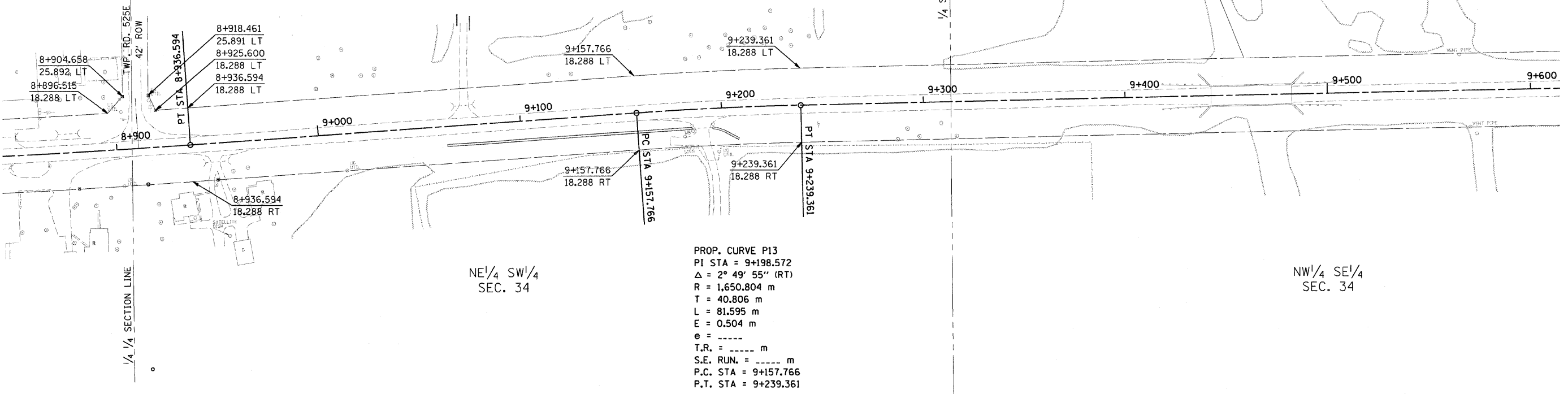


IRON PIN
NORTH QUARTER CORNER
SECTION 34
STA. 9+327.313, 991.424 LT
MONUMENT RECORD
DOC. #2002-01272

PROP. CURVE P12
PI STA = 8+888.986
 $\Delta = 1^\circ 19' 18''$ (LT)
R = 4,127.523 m
T = 47.612 m
L = 95.220 m
E = 0.275 m
e = -----
T.R. = ----- m
S.E. RUN. = ----- m
P.C. STA = 8+841.374
P.T. STA = 8+936.594

NE $\frac{1}{4}$ SW $\frac{1}{4}$
SEC. 34

NW $\frac{1}{4}$ SE $\frac{1}{4}$
SEC. 34



PROP. CURVE P13
PI STA = 9+198.572
 $\Delta = 2^\circ 49' 55''$ (RT)
R = 1,650.804 m
T = 40.806 m
L = 81.595 m
E = 0.504 m
e = -----
T.R. = ----- m
S.E. RUN. = ----- m
P.C. STA = 9+157.766
P.T. STA = 9+239.361

NE $\frac{1}{4}$ SW $\frac{1}{4}$
SEC. 34

NW $\frac{1}{4}$ SE $\frac{1}{4}$
SEC. 34

IRON PIN
SOUTH QUARTER CORNER
SECTION 34
STA. 9+304.903, 649.725 RT
MONUMENT RECORD
DOC. #2002-01272

FOR INFORMATION ONLY

THESE METRIC RIGHT-OF-WAY PLANS ARE FOR INFORMATION ONLY. THEY WERE DEVELOPED FROM THE OFFICIAL ENGLISH VERSION OF THE RIGHT-OF-WAY PLANS. STATIONING AND DIMENSIONS CONVERTED TO METRIC. FINAL RIGHT-OF-WAY SHALL BE DETERMINED BY THE ORIGINAL ENGLISH PLANS.

RIGHT OF WAY PLANS
FAP ROUTE 781

PROJECT SECTION 1YRS, 2ZRS-1

STATION 8+850 TO STATION 9+610

COUNTY CRAWFORD

SCALE 1:1000 SHEET 13 OF 22