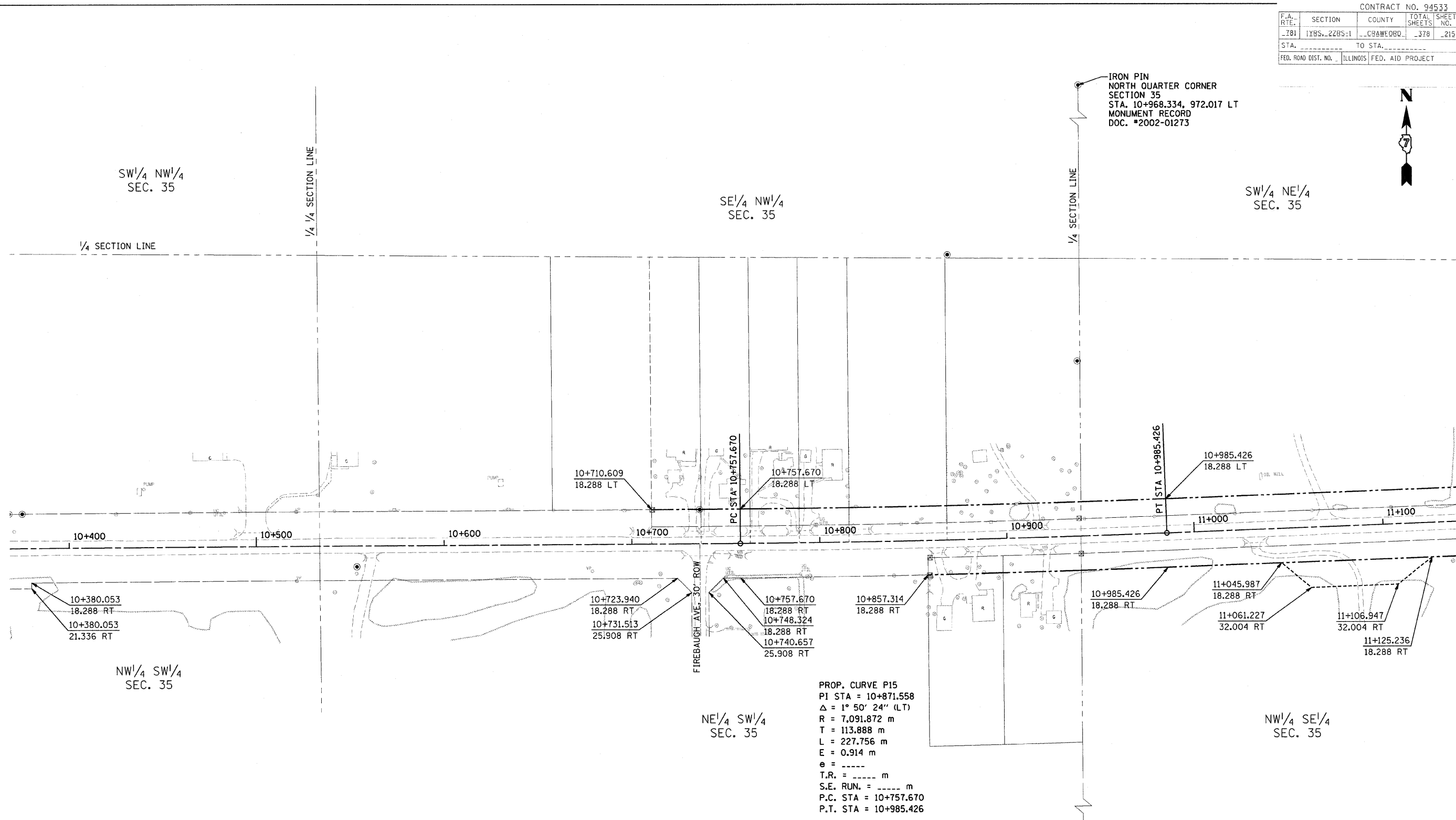


CONTRACT NO. 94533			
F.A. SECTION	COUNTY	TOTAL SHEETS	NO.
781 1YRS-2ZRS-1	CRAWFORD	378	219
STA. _____ TO STA. _____			
FED. ROAD DIST. NO.	ILLINOIS	FED. AID PROJECT	



FOR INFORMATION ONLY

THESE METRIC RIGHT-OF-WAY PLANS ARE FOR INFORMATION ONLY. THEY WERE DEVELOPED FROM THE OFFICIAL ENGLISH VERSION OF THE RIGHT-OF-WAY PLANS. STATIONING AND DIMENSIONS CONVERTED TO METRIC. FINAL RIGHT-OF-WAY SHALL BE DETERMINED BY THE ORIGINAL ENGLISH PLANS.

IRON PIN
 SOUTH QUARTER CORNER
 SECTION 35
 STA. 10+924.269, 659.710 RT
 MONUMENT RECORD
 DOC. #2002-01273

RIGHT OF WAY PLANS
FAP ROUTE 781

PROJECT SECTION 1YRS, 2ZRS-1
 STATION 10+375 TO
 STATION 11+135
 COUNTY CRAWFORD
 SCALE 1:1000 SHEET 15 OF 22