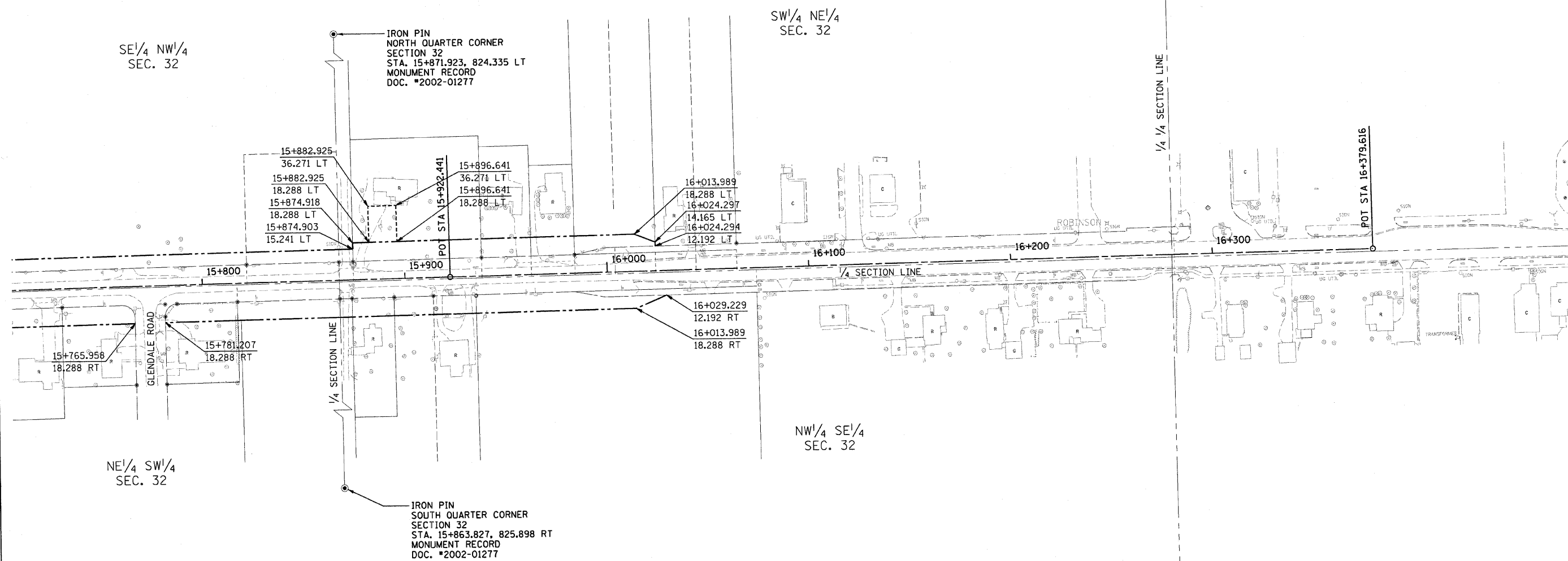


CONTRACT NO. 94533			
F.A. RTE:	SECTION	COUNTY	TOTAL SHEETS
781	1YRS, 2ZRS-1	CRAWFORD	378
SHEET NO.		222	
STA. _____		TO STA. _____	
FED. ROAD DIST. NO.	ILLINOIS	FED. AID PROJECT	



FOR INFORMATION ONLY

THESE METRIC RIGHT-OF-WAY PLANS ARE FOR INFORMATION ONLY. THEY WERE DEVELOPED FROM THE OFFICIAL ENGLISH VERSION OF THE RIGHT-OF-WAY PLANS. STATIONING AND DIMENSIONS CONVERTED TO METRIC. FINAL RIGHT-OF-WAY SHALL BE DETERMINED BY THE ORIGINAL ENGLISH PLANS.

RIGHT OF WAY PLANS
FAP ROUTE 781
PROJECT SECTION 1YRS, 2ZRS-1
STATION 15+715 TO
STATION 16+379
COUNTY CRAWFORD
SCALE 1:1000 SHEET 22 OF 22