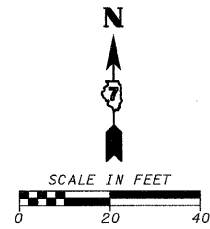
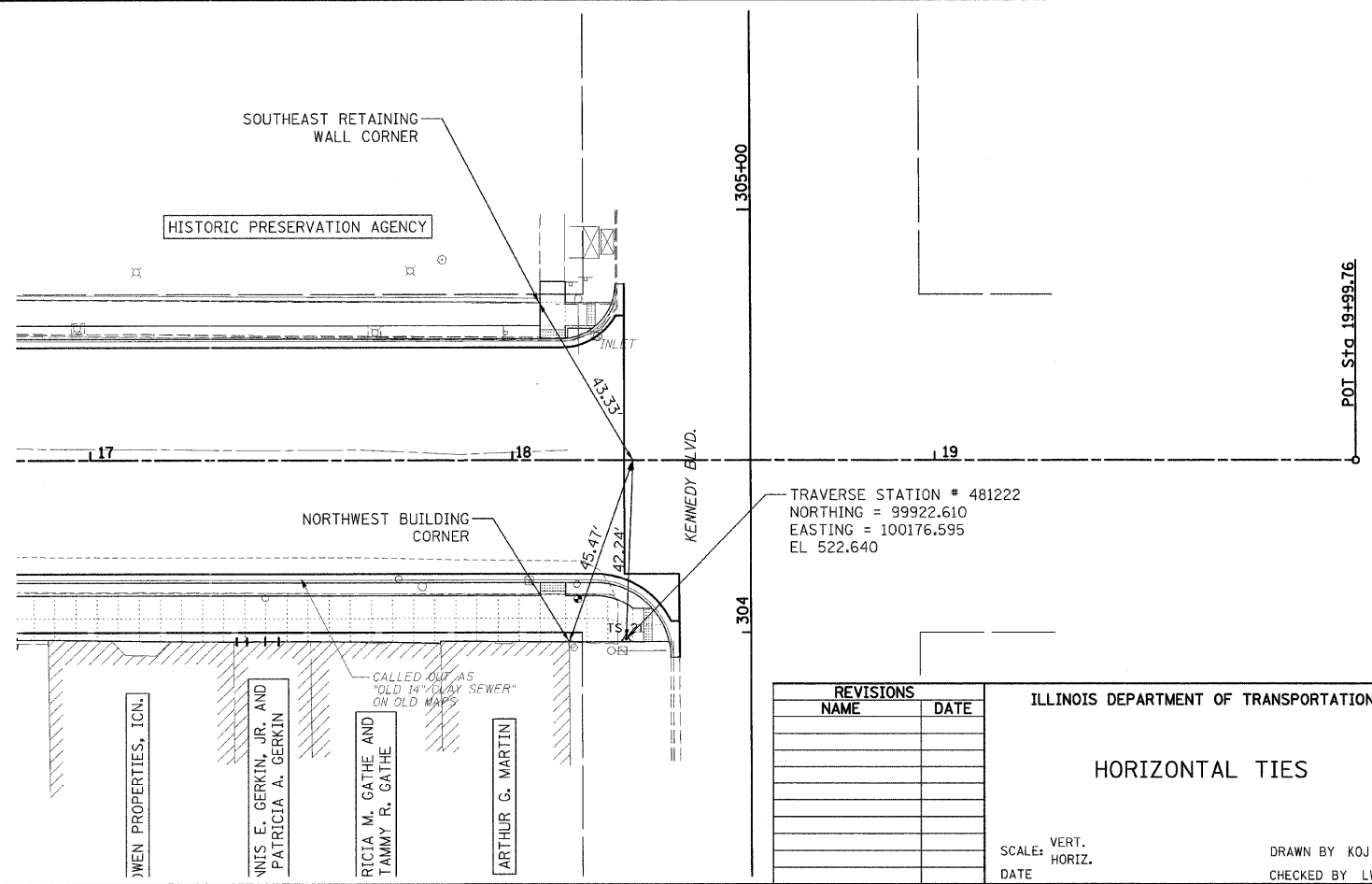
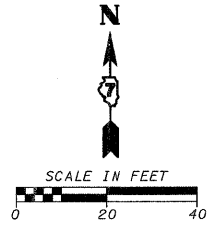
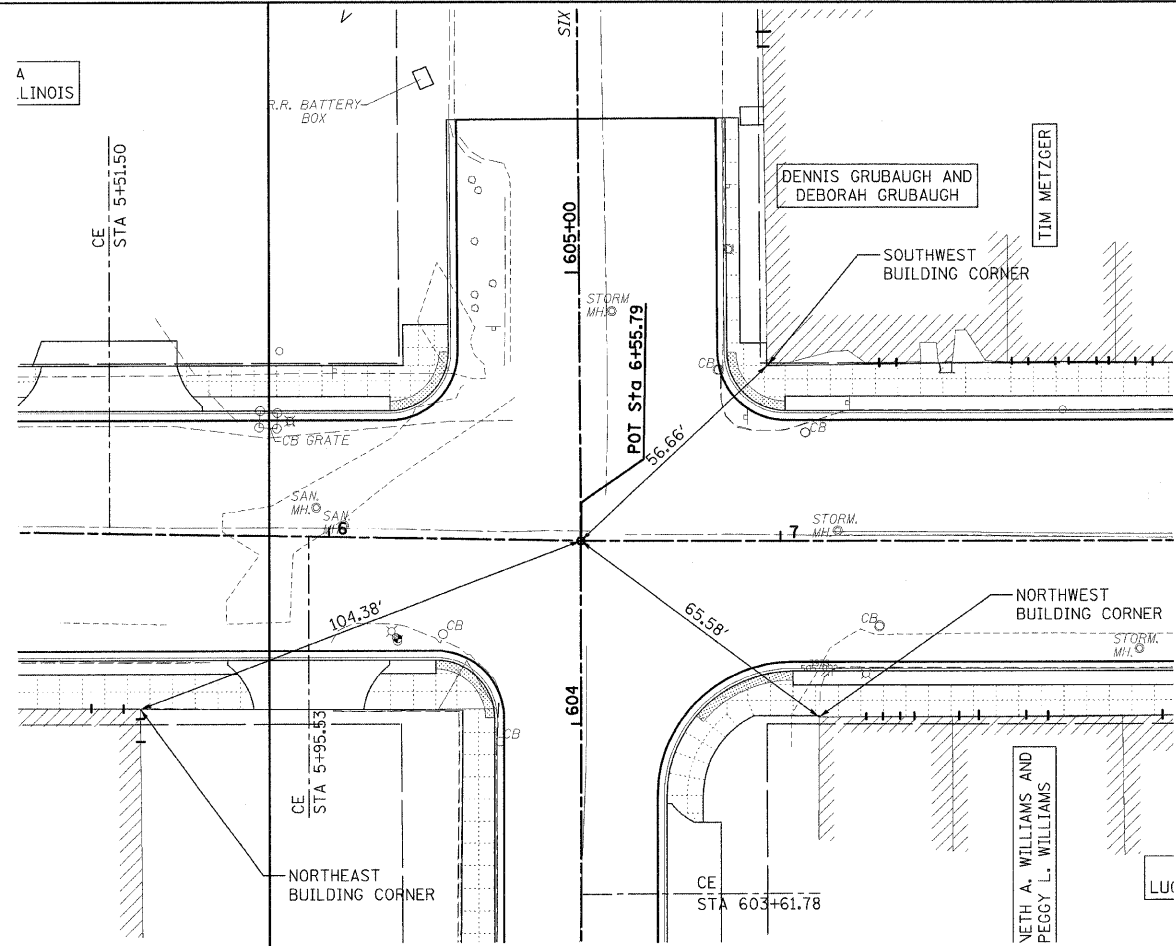
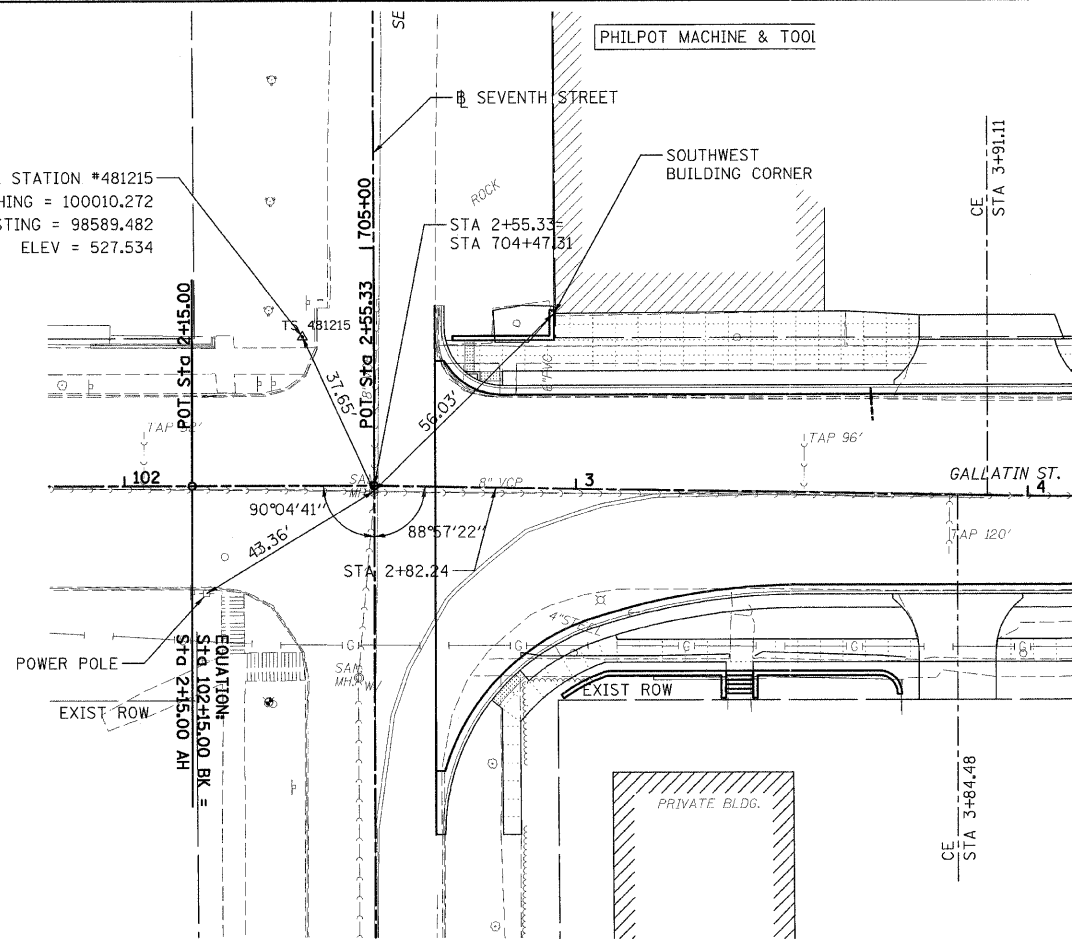


F.A. U. RTE.	SECTION	COUNTY	TOTAL SHEETS	SHEET NO.
849	99-00048-01-PV	FAYETTE	98	26
STA.		TO STA.		
FED. ROAD DIST. NO.	ILLINOIS	FED. AID PROJECT		
CONTRACT NO. 95500				



TRAVERSE STATION #481215
 NORTHING = 100010.272
 EASTING = 98589.482
 ELEV = 527.534



TRAVERSE STATION # 481222
 NORTHING = 99922.610
 EASTING = 100176.595
 EL 522.640

REVISIONS	
NAME	DATE

ILLINOIS DEPARTMENT OF TRANSPORTATION
HORIZONTAL TIES
 SCALE: VERT. DATE
 HORIZ. DATE
 DRAWN BY KOJ
 CHECKED BY LWJ

CADD FILE: H:\4812\Design\0261\1ePfts.dgn
 PLOTTED: 11/3/2008

H.M. & G. NO. 4612