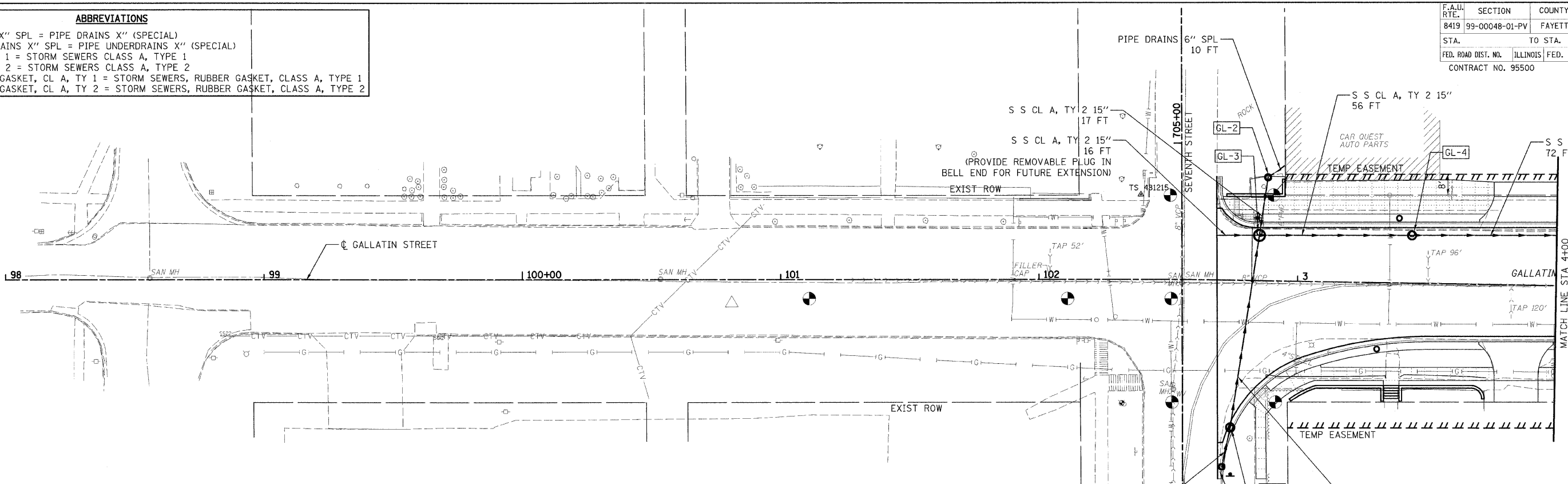
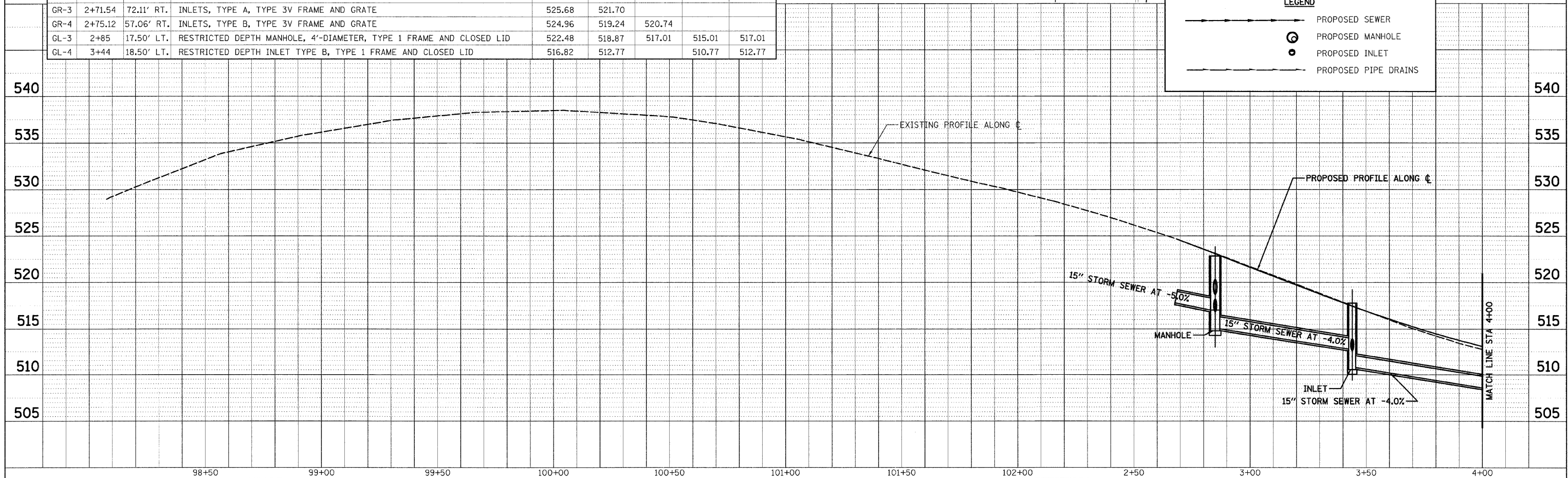
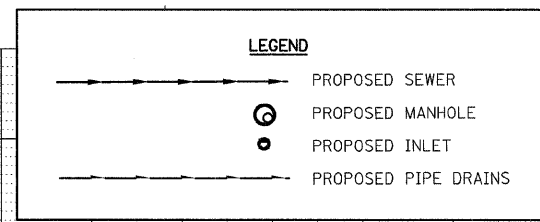


F.A.U. RTE.	SECTION	COUNTY	TOTAL SHEETS	SHEET NO.
8419	99-00048-01-PV	FAYETTE	98	34
STA.		TO STA.		
FED. ROAD DIST. NO.		ILLINOIS	FED. AID PROJECT	
CONTRACT NO. 95500		REVISED 4-13-07		

**ABBREVIATIONS**  
 PIPE DRAINS X" SPL = PIPE DRAINS X" (SPECIAL)  
 PIPE UNDERDRAINS X" SPL = PIPE UNDERDRAINS X" (SPECIAL)  
 S S CL A, TY 1 = STORM SEWERS CLASS A, TYPE 1  
 S S CL A, TY 2 = STORM SEWERS CLASS A, TYPE 2  
 S S, RUBBER GASKET, CL A, TY 1 = STORM SEWERS, RUBBER GASKET, CLASS A, TYPE 1  
 S S, RUBBER GASKET, CL A, TY 2 = STORM SEWERS, RUBBER GASKET, CLASS A, TYPE 2



NO.	STATION	OFFSET	DESCRIPTION	LID/GRATE ELEV.	PIPE INVERT ELEV.			
					NORTH	SOUTH	EAST	WEST
GL-2	2+88	40.00' LT.	INLETS, TYPE A, TYPE B GRATE	524.15		519.66		
GR-3	2+71.54	72.11' RT.	INLETS, TYPE A, TYPE 3V FRAME AND GRATE	525.68	521.70			
GR-4	2+75.12	57.06' RT.	INLETS, TYPE B, TYPE 3V FRAME AND GRATE	524.96	519.24	520.74		
GL-3	2+85	17.50' LT.	RESTRICTED DEPTH MANHOLE, 4'-DIAMETER, TYPE 1 FRAME AND CLOSED LID	522.48	518.87	517.01	515.01 517.01	
GL-4	3+44	18.50' LT.	RESTRICTED DEPTH INLET TYPE B, TYPE 1 FRAME AND CLOSED LID	516.82	512.77		510.77 512.77	



DATE: \_\_\_\_\_ BY: \_\_\_\_\_  
 SURVEYED: \_\_\_\_\_ PLOTTED: \_\_\_\_\_  
 NOTE BOOK NO. \_\_\_\_\_ CAD FILE NAME: \_\_\_\_\_

DATE: \_\_\_\_\_ BY: \_\_\_\_\_  
 SURVEYED: \_\_\_\_\_ PLOTTED: \_\_\_\_\_  
 NOTE BOOK NO. \_\_\_\_\_ CAD FILE NAME: \_\_\_\_\_

CADD FILE: H:\4812\des\gn\0348s\_gallatin\_01.dgn  
 PLOTTED: 11/3/2008