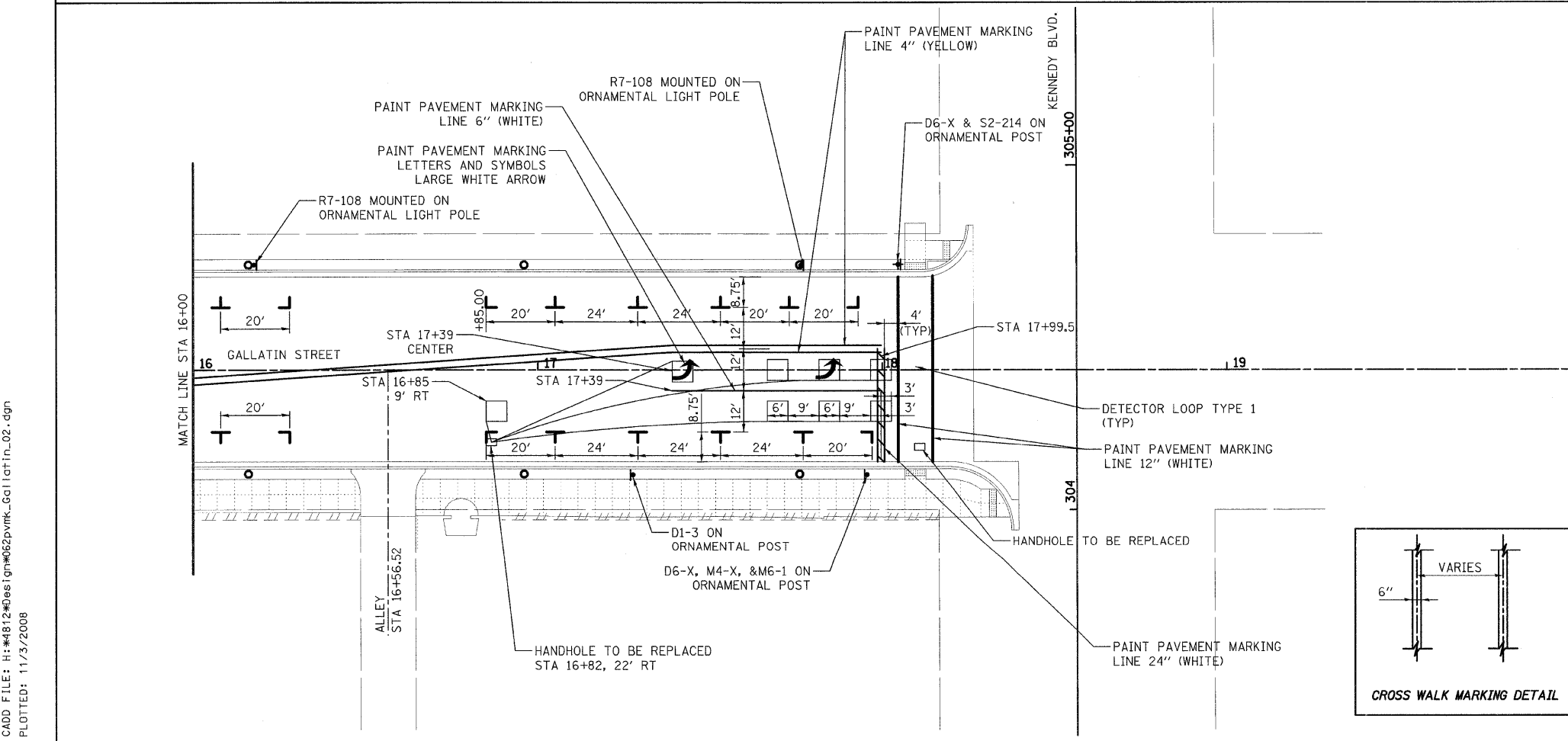
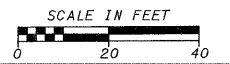
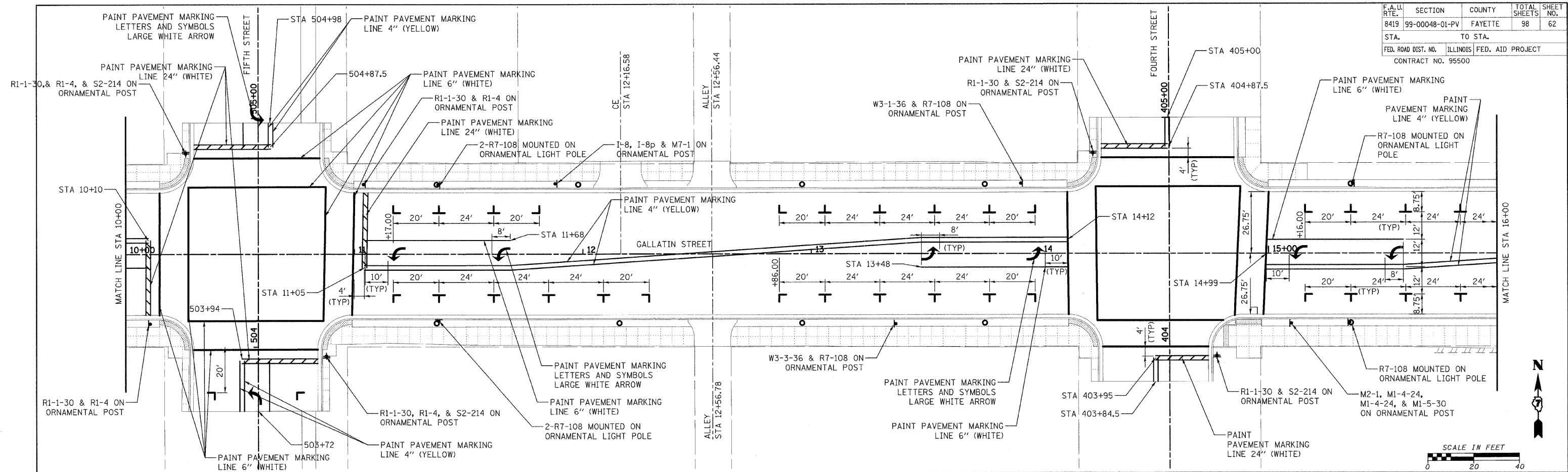
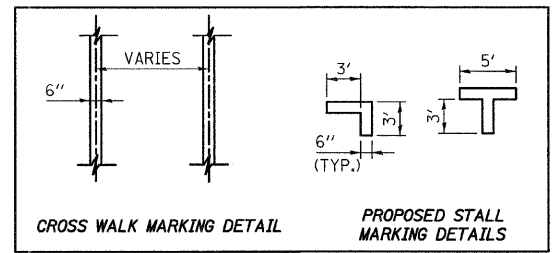
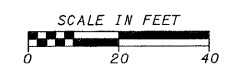


| | | | | |
|---------------------|----------------|---------------------------|--------------|-----------|
| F.A. LI. RTE. | SECTION | COUNTY | TOTAL SHEETS | SHEET NO. |
| 8419 | 99-00048-01-PV | FAYETTE | 98 | 62 |
| STA. | | TO STA. | | |
| FED. ROAD DIST. NO. | | ILLINOIS FED. AID PROJECT | | |
| CONTRACT NO. 95500 | | | | |



NOTES:

1. EACH LOOP SHALL HAVE ITS OWN HOMERUN TO THE GULFBOX/HANDHOLE.
2. LOOPS SHOULD BE CENTERED IN EACH LANE.
3. USE 6' BY 6' LOOPS FOR LANE WIDTHS OF 11' OR GREATER.



| REVISIONS | |
|-----------|------|
| NAME | DATE |
| | |
| | |
| | |
| | |
| | |

ILLINOIS DEPARTMENT OF TRANSPORTATION
PERMANENT PAVEMENT MARKING
 STA 10+00 TO STA 18+26.50

SCALE: VERT. _____
 HORIZ. _____
 DATE _____

DRAWN BY KOJ
 CHECKED BY LWJ

CADD FILE: H:\4812\mes\pvmk\Gallatin_02.dgn
 PLOTTED: 11/3/2008

H.M. & G. NO. 4812