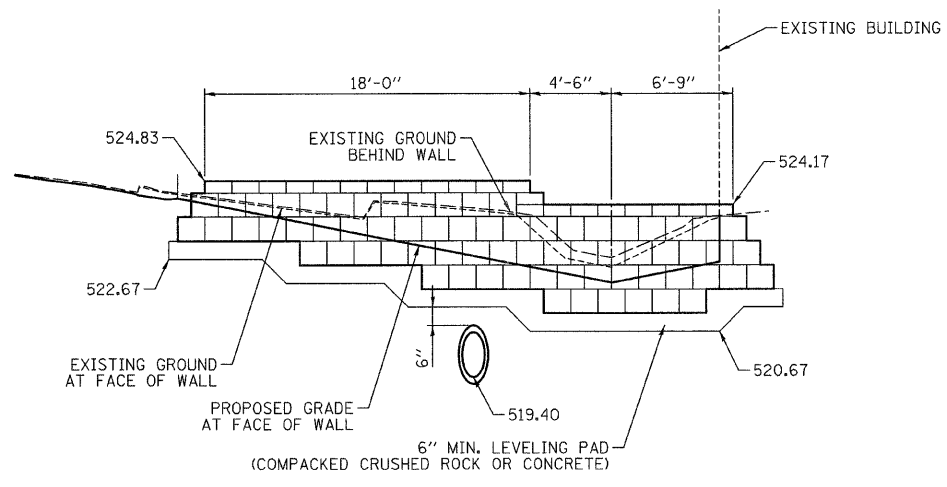
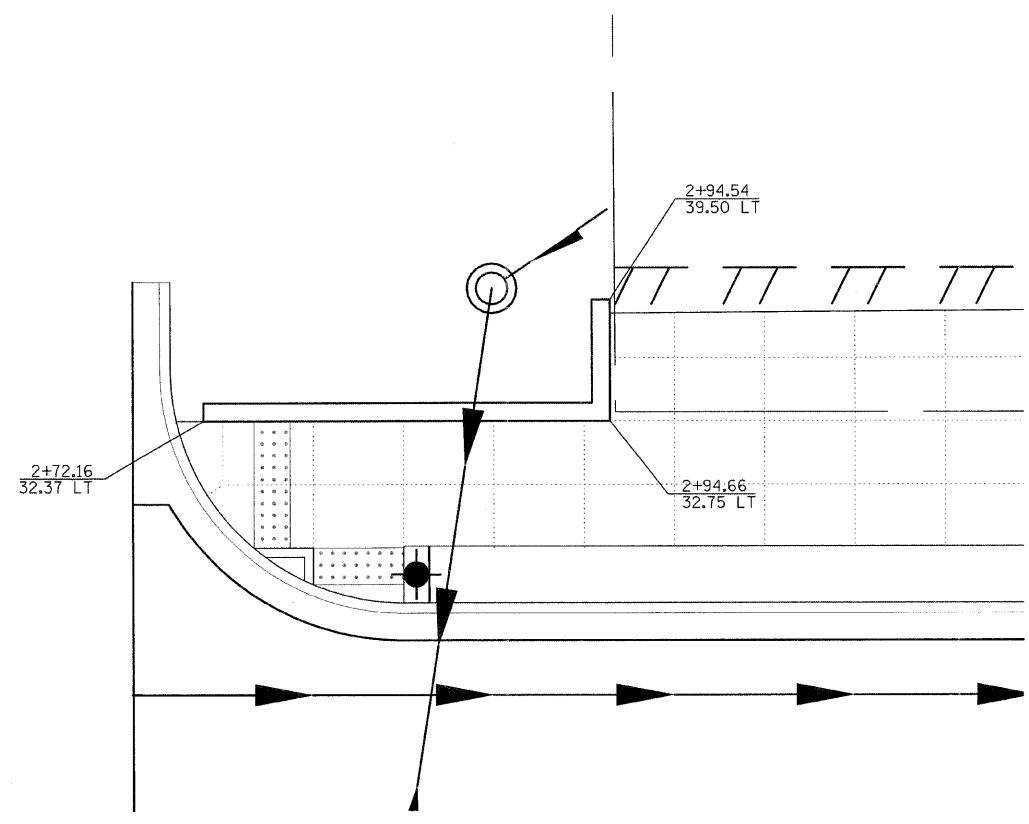
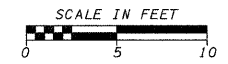


F.A.U. RTE.	SECTION	COUNTY	TOTAL SHEETS	SHEET NO.
8419	99-00048-01-PV	FAYETTE	98	73
STA.		TO STA.		
FED. ROAD DIST. NO.	ILLINOIS	FED. AID PROJECT		
CONTRACT NO. 95500				



MODULAR BLOCK RETAINING WALL FACE AREA - 159.0 SQ. FT.

REVISIONS	
NAME	DATE

ILLINOIS DEPARTMENT OF TRANSPORTATION

**RETAINING WALL DETAILS**

SCALE: VERT. \_\_\_\_\_  
 HORIZ. \_\_\_\_\_

DATE \_\_\_\_\_

DRAWN BY KOJ  
 CHECKED BY LWJ

CADD FILE: H:\4812\Design\073pp\_retwall.LT.dgn  
 PLOTTED: 11/3/2008

H.M. & G. INC. 4812