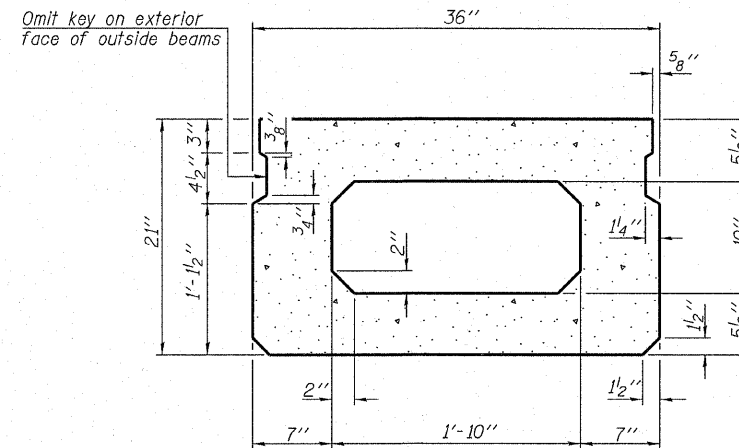
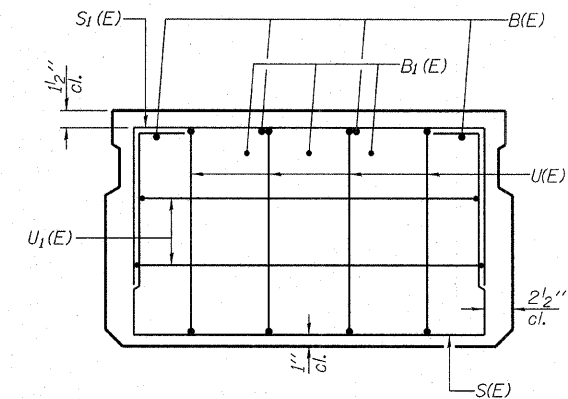


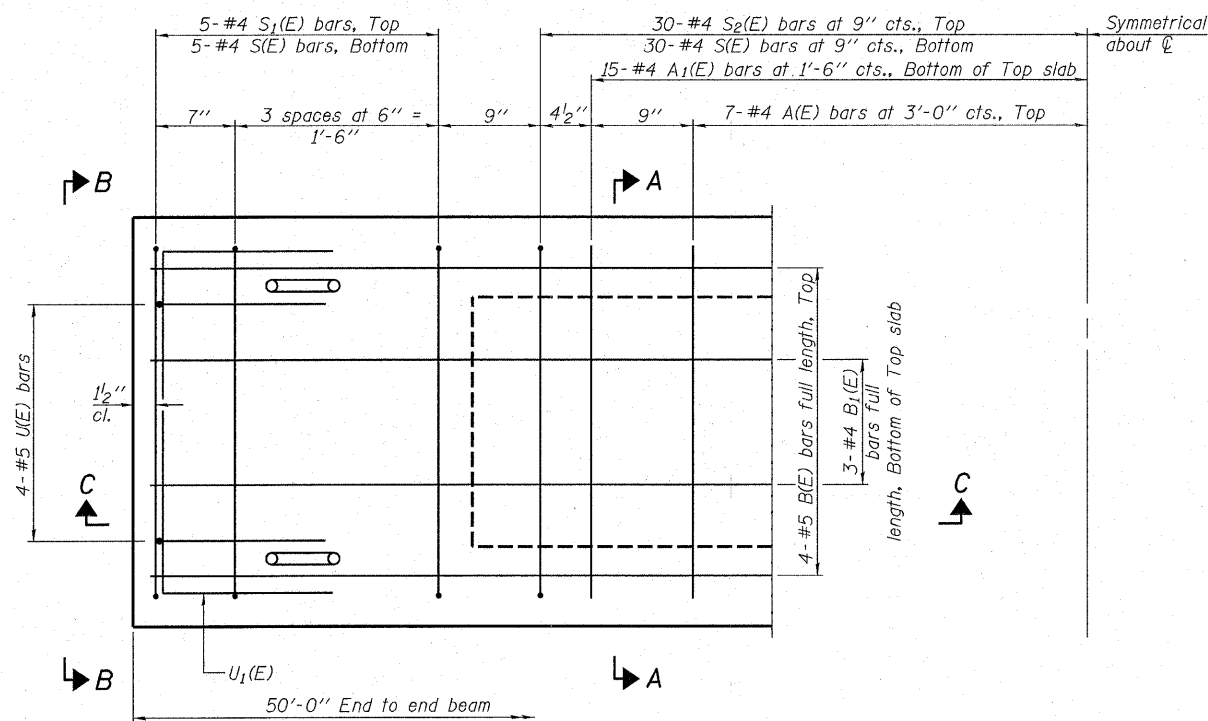
SECTION C-C



SECTION A-A  
(Showing dimensions)

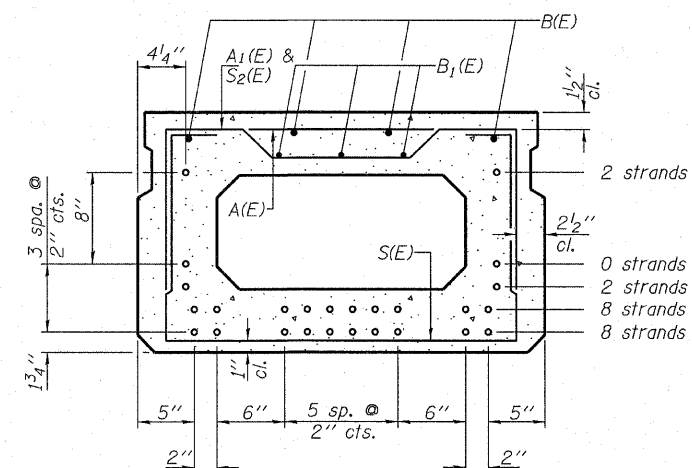


VIEW B-B



PLAN VIEW

Note: Spacing of S(E) and S2(E) bars may be adjusted up to 4" in the immediate area of the transverse tie diaphragms to miss the block outs for the transverse ties.



SECTION A-A

(Showing reinforcement and permissible strand locations)

Note: Place the number of strands specified in each row symmetrically about the centerline of beam in the permissible strand locations shown.

BAR LIST  
ONE BEAM ONLY

(For Information only)

Bar	No.	Size	Length	Shape
A(E)	14	#4	2'-7"	—
B(E)	4	#5	49'-8"	—
B1(E)	3	#4	49'-8"	—
S(E)	70	#4	6'-5"	—
S1(E)	10	#4	4'-11"	⌈
S2(E)	60	#4	5'-2"	⌈
U(E)	8	#5	4'-0"	⌈
U1(E)	4	#4	5'-0"	⌈

Note: See sheets 10 & 11 for additional details and Bill of Material.

DESIGNED - S.M.S.
CHECKED - S.W.M.
DRAWN - D.A.B.
CHECKED - D.T.M.

PD-2136-0 5-16-08

21" x 36" PPC DECK BEAM  
STRUCTURE NO. 070-4535

HAMPTON, LENZINI & RENWICK, INC. CIVIL & STRUCTURAL ENGINEERS LAND SURVEYORS 3085 STEVENSON DRIVE, SUITE 201 SPRINGFIELD, ILLINOIS 62703 (217) 546-3400	SHEET NO. 2  8 SHEETS	T.R.	SECTION	COUNTY	TOTAL SHEETS	SHEET NO.
		146	08-05125-00-BR	MOULTRIE	15	9
PROJECT NUMBER: 08.0094.130 DATE: 10/29/08		LOWE ROAD DISTRICT		CONTRACT NO. 95565		
		FED. ROAD DIST. NO.	ILLINOIS	FED. AID PROJECT		