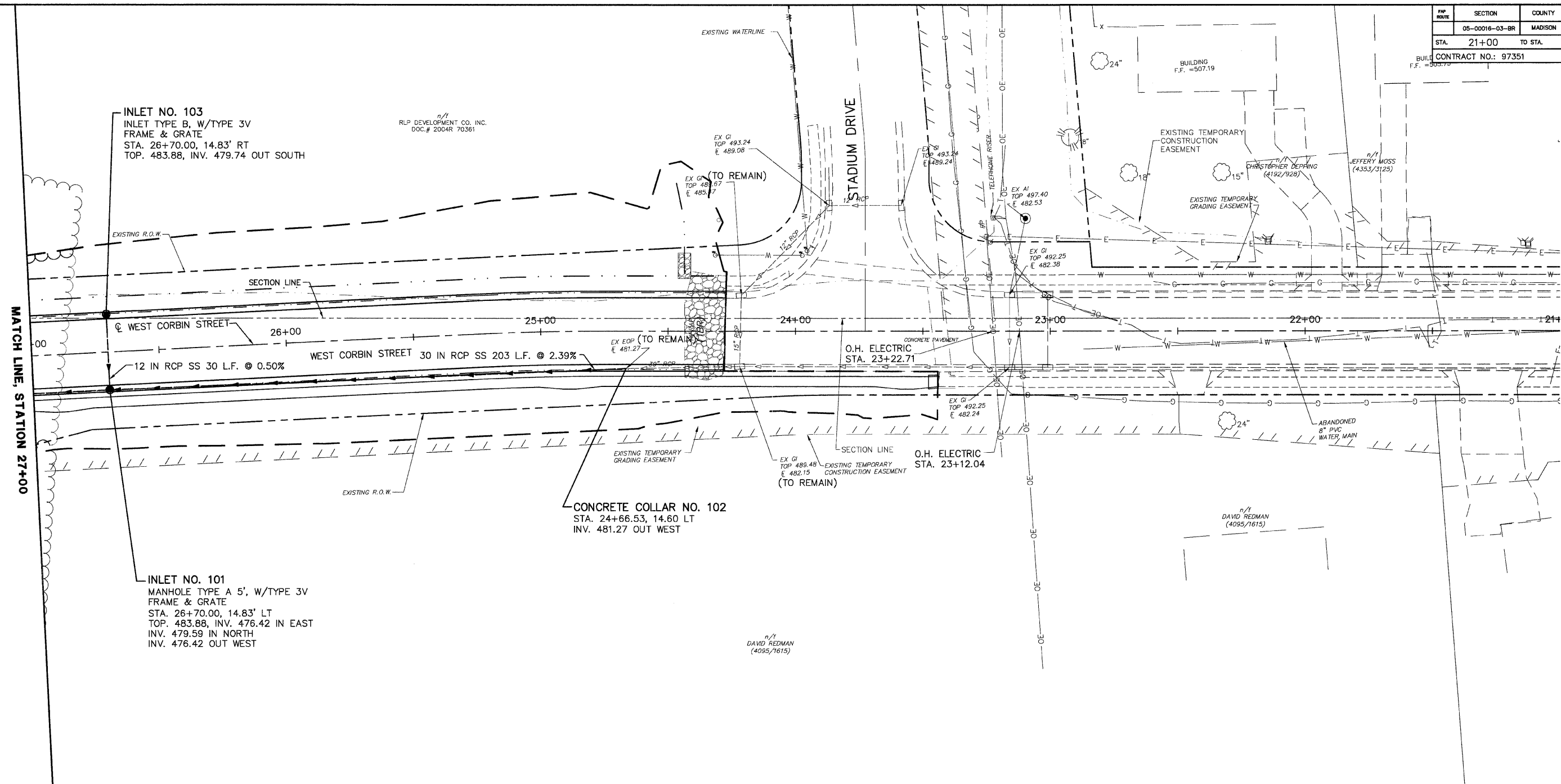


FW ROUTE	SECTION	COUNTY	TOTAL SHEETS	SHEET NO
05-00016-03-BR	MADISON	129	34	
STA. 21+00		TO STA. 27+00		
CONTRACT NO.: 97351				

DATE	2/27/06
BY	J.F.F.
CHECKED	E.R.O.
NO. OF WAY CHECKED	
NO. OF FILE NAME	



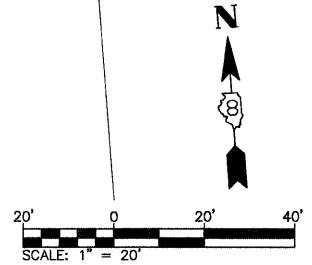
LEGEND:

- EXISTING STORM SEWER
- EXISTING SANITARY SEWER
- ⊙ EXISTING SANITARY MANHOLE
- CONSTRUCTION LIMITS
- PROPOSED STORM SEWER
- PROPOSED SANITARY SEWER
- PROPOSED CURB INLET
- ⊙ PROPOSED STORM MANHOLE
- PROPOSED SANITARY MANHOLE

NOTES:

1. ALL UTILITY RELOCATION TO BE PERFORMED BY OTHERS.
2. CULVERT PIPES, STORM SEWERS AND SANITARY SEWERS ARE 90° TO CENTER OF ROAD UNLESS OTHERWISE NOTED.
3. STATION IS TO THE CENTER OF STRUCTURE UNLESS OTHERWISE NOTED.
4. TOPS OF INLETS TYPE 3 AND TYPE 3V FRAME AND GRATE ARE TO THE EDGE OF PAVEMENT.
5. FLARED END SECTIONS ARE INCLUDED IN LENGTHS OF PIPE.
6. ALL LENGTHS ARE MEASURED FROM THE CENTER OF STRUCTURE UNLESS OTHERWISE NOTED.

REVISIONS	
NAME	DATE



ILLINOIS DEPARTMENT OF TRANSPORTATION
**DRAINAGE AND UTILITIES
 PLAN—WEST CORBIN STREET
 STA 21+00 TO STA 27+00
 FAU ROUTE 8959
 SECTION 05-00016-03-BR
 COUNTY MADISON**
 DRAWN BY: R.A.W.