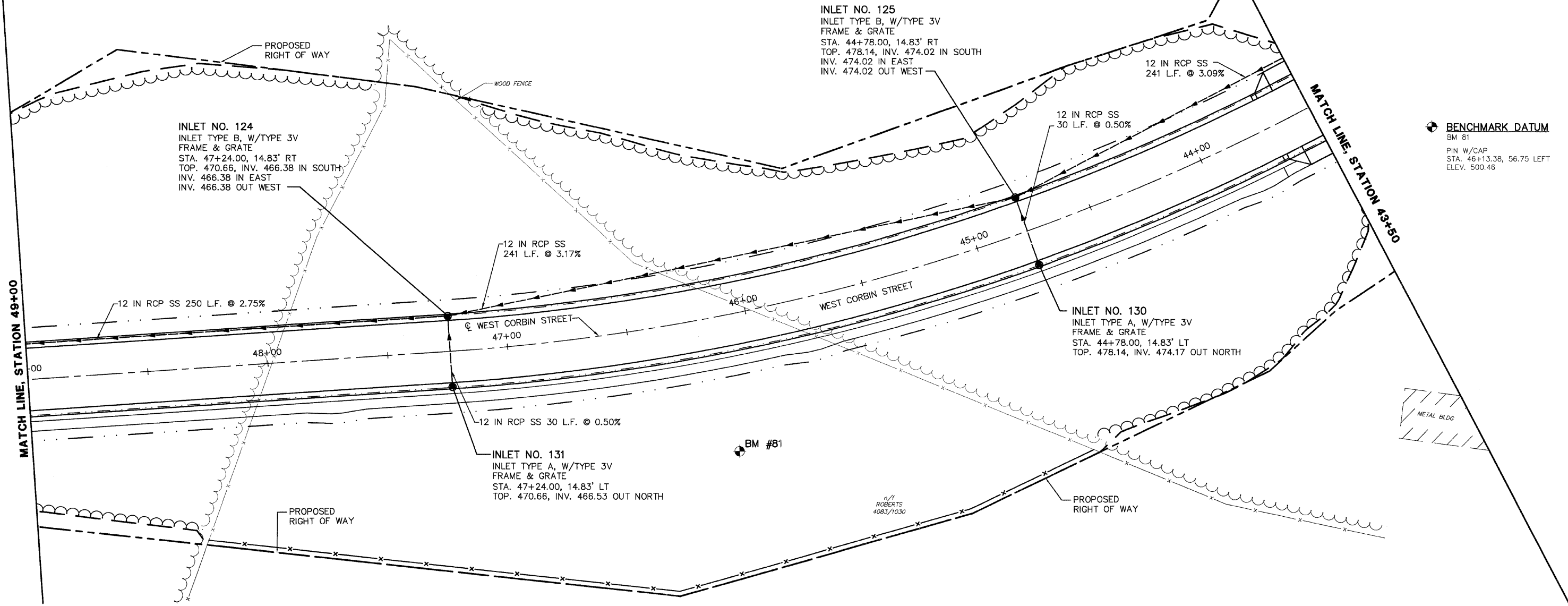
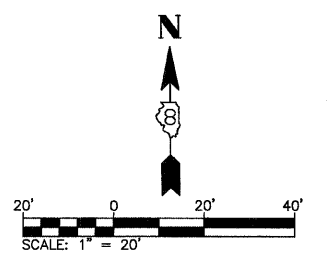


FAU ROUTE	SECTION	COUNTY	TOTAL SHEETS	SHEET NO.
05-00016-03-BR	MADISON	129	38	
STA. 43+50	TO STA. 49+00	CONTRACT NO.: 97351		

DATE	BY
2/7/06	J.F.F.
PLANNED	CHECKED
NOTED	FILED
NO.	NO.



**BENCHMARK DATUM**  
 BM #81  
 PIN W/CAP  
 STA. 46+13.38, 56.75 LEFT  
 ELEV. 500.46



**NOTES:**

1. ALL UTILITY RELOCATION TO BE PERFORMED BY OTHERS.
2. CULVERT PIPES, STORM SEWERS AND SANITARY SEWERS ARE 90° TO CENTER OF ROAD UNLESS OTHERWISE NOTED.
3. STATION IS TO THE CENTER OF STRUCTURE UNLESS OTHERWISE NOTED.
4. TOPS OF INLETS TYPE 3 AND TYPE 3V FRAME AND GRATE ARE TO THE EDGE OF PAVEMENT.
5. FLARED END SECTIONS ARE INCLUDED IN LENGTHS OF PIPE.
6. ALL LENGTHS ARE MEASURED FROM THE CENTER OF STRUCTURE UNLESS OTHERWISE NOTED.

REVISIONS	
NAME	DATE

ILLINOIS DEPARTMENT OF TRANSPORTATION  
**DRAINAGE AND UTILITIES**  
**PLAN—WEST CORBIN STREET**  
**STA 43+50 TO STA 49+00**  
 FAU ROUTE 8959  
 SECTION 05-00016-03-BR  
 COUNTY MADISON  
 DRAWN BY: R.A.W.