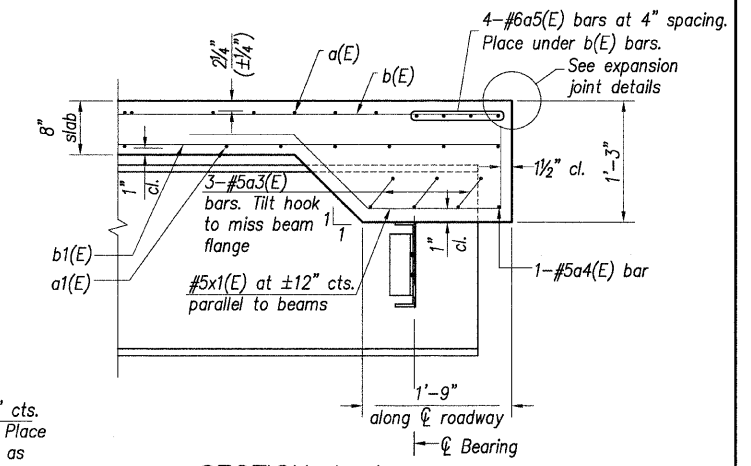
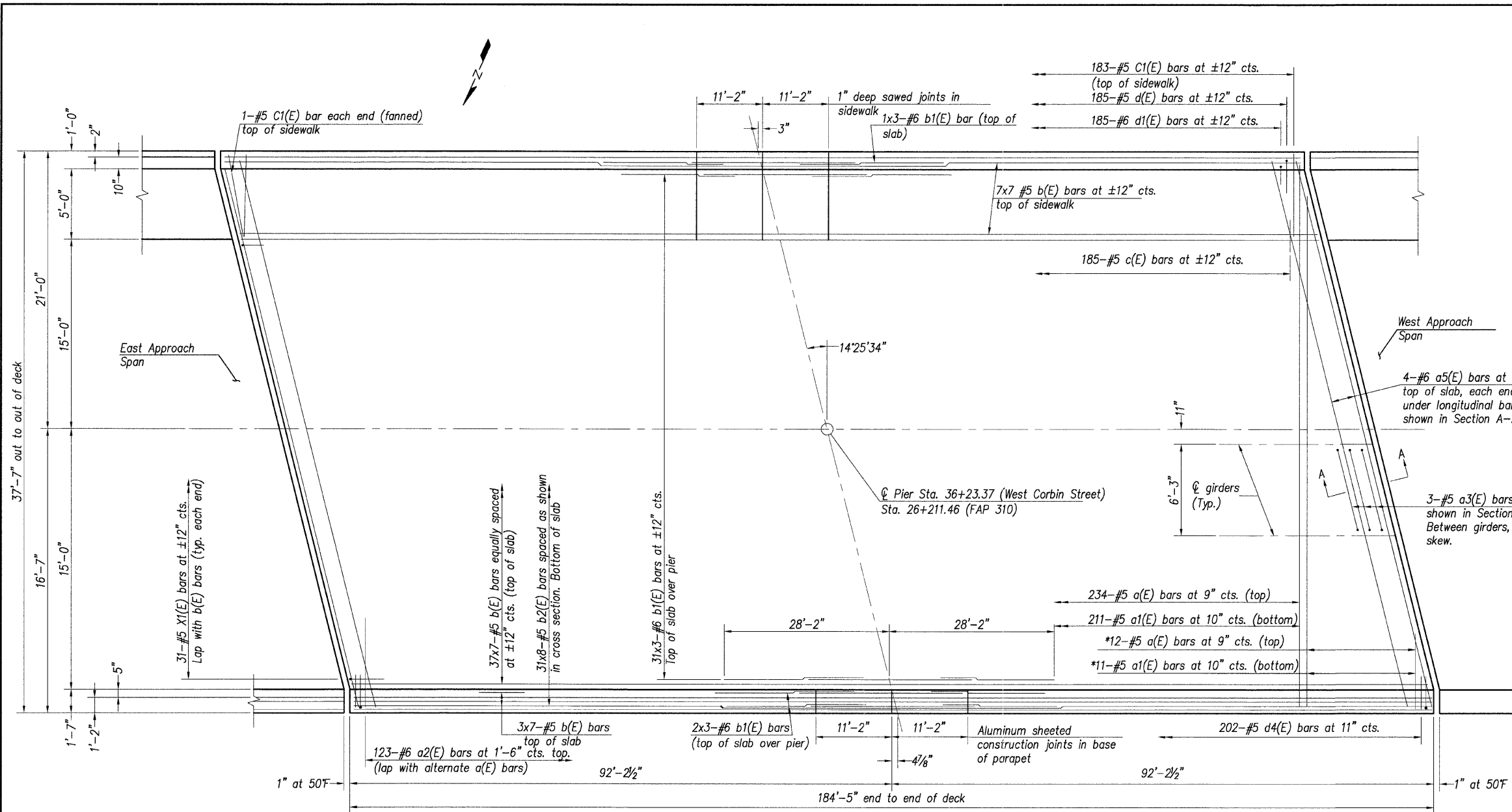
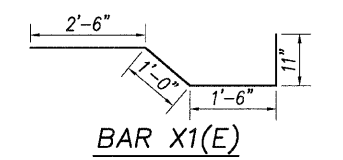


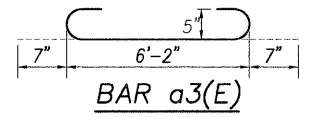
Contract # 97351



SECTION A-A



BAR X1(E)

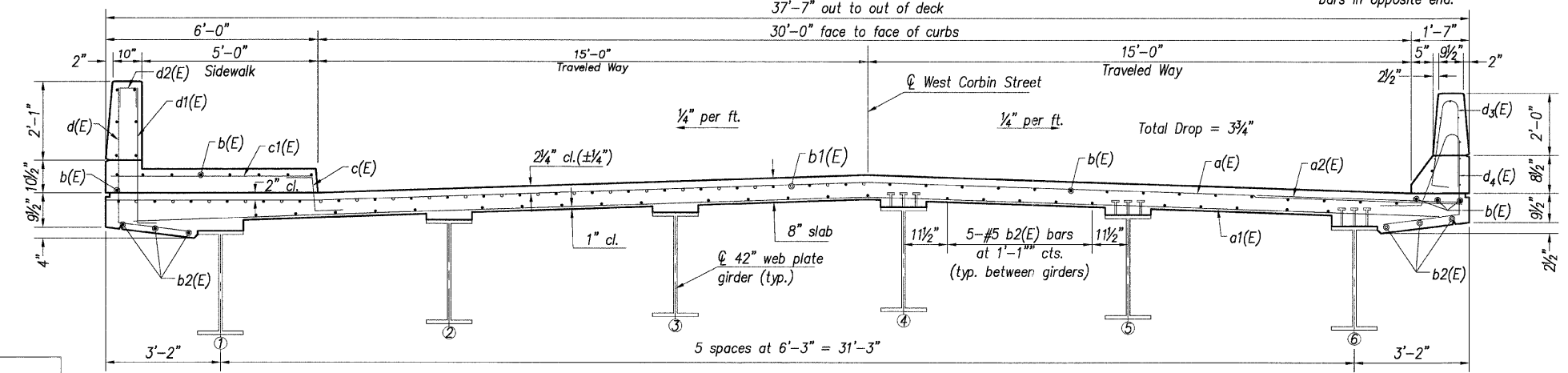


BAR a3(E)

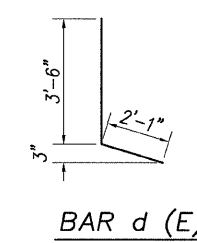
MINIMUM BAR LAPS
#5 BARS = 2'-2"
#6 BARS = 2'-7"

PLAN

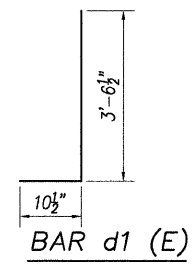
*Order a(E) and a1(E) bars full length. Cut to fit skew and use remainder of bars in opposite end.



CROSS SECTION (LOOKING WEST)



BAR d(E)



BAR d1(E)

NOTES

- See sheet 11 for sidewalk and parapet details.
- See sheet 11 for Bill of Materials.
- Bars indicated thus 20 X 3 - #5 etc. indicates 20 lines of bars with 3 lengths per line.
- See sheet 11 for parapet reinforcement.

DESIGNED	T.M.M.
CHECKED	C.M.W.
DRAWN	B.D.M./S.H.K.
CHECKED	C.M.W.

Hoelscher Engineering, P.C.
11 Executive Drive Suite 12
Fairview Heights, Illinois 62208
(618)624-8610 FAX: (618)624-8611

NEAR PIER

NEAR MIDSPAN

REVISIONS	
NAME	DATE

ILLINOIS DEPARTMENT OF TRANSPORTATION
DECK PLAN & DETAILS
WEST CORBIN STREET OVER F.A.P. 310 (IL-255)
F.A.U. 8959 SECTION 05-00016-03-BR
MADISON COUNTY
STATION 36+23.37
STRUCTURE NO. 060-6851