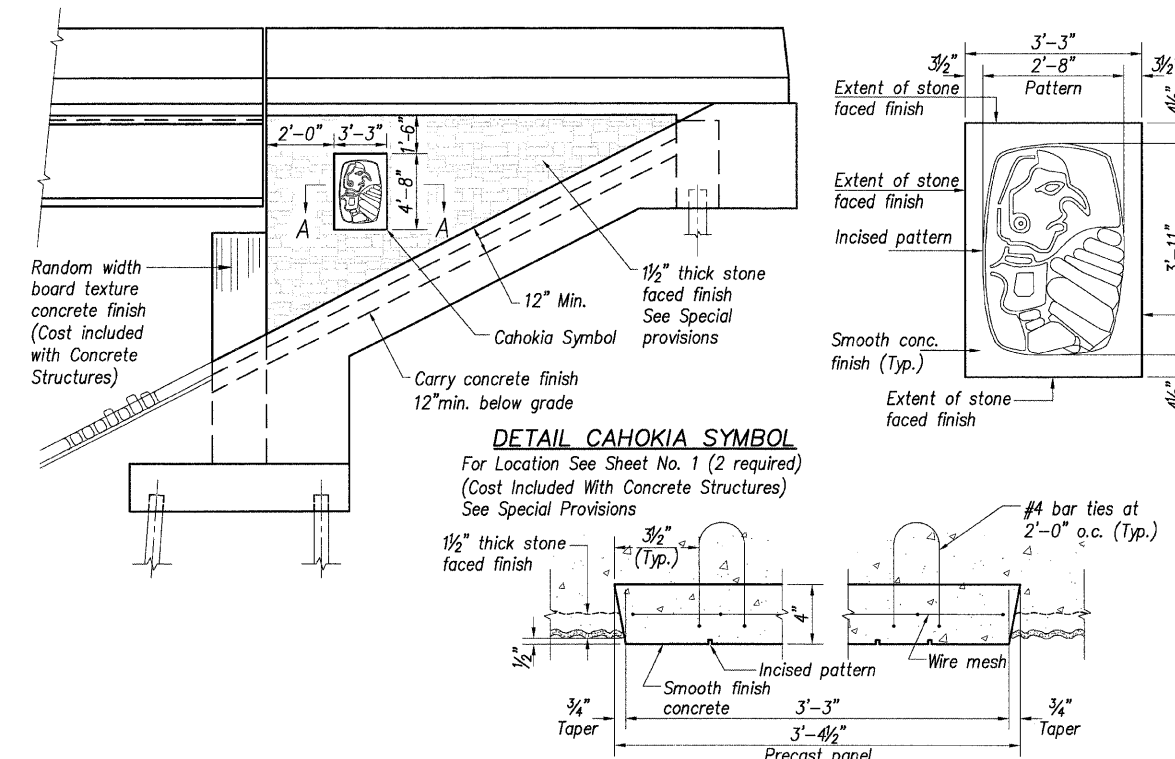
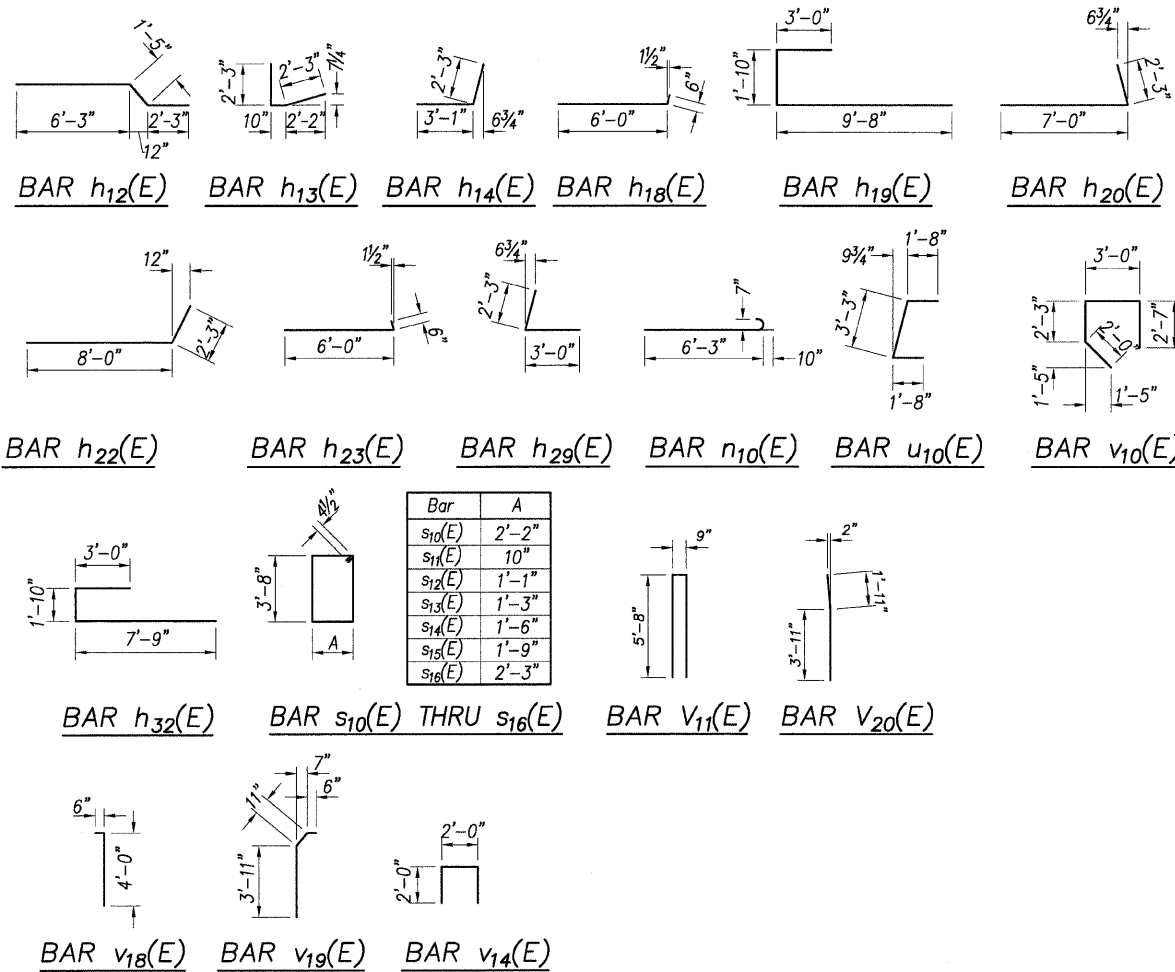


EAST ABUTMENT BILL OF MATERIAL

WEST ABUTMENT BILL OF MATERIAL

Bar	No.	Size	Length	Shape
h10(E)	20	#6	34'-3"	—
h11(E)	12	#5	34'-3"	—
h12(E)	14	#5	9'-11"	—
h13(E)	14	#5	5'-4"	—
h14(E)	28	#5	5'-4"	—
h15(E)	8	#5	3'-0"	—
h18(E)	10	#5	6'-6"	—
h20(E)	5	#5	6'-9"	—
h21(E)	8	#5	3'-4"	—
h22(E)	5	#5	10'-3"	—
h23(E)	10	#5	6'-6"	—
h24(E)	3	#5	5'-9"	—
h25(E)	3	#5	30'-2"	—
h27(E)	3	#5	5'-11"	—
h28(E)	14	#5	5'-3"	—
h30(E)	24	#5	14'-8"	—
h31(E)	4	#6	13'-4"	—
h32(E)	10	#5	12'-7"	—
h33(E)	3	#5	5'-2"	—
h34(E)	10	#5	14'-2"	—
h35(E)	3	#5	5'-8"	—
n10(E)	98	#7	7'-1"	—
p10(E)	10	#7	38'-3"	—
s10(E)	24	#4	12'-5"	—
s11(E)	2	#4	9'-9"	—
s12(E)	2	#4	10'-3"	—
s13(E)	2	#4	10'-7"	—
s14(E)	2	#4	11'-1"	—
s15(E)	2	#4	11'-7"	—
s16(E)	4	#4	12'-7"	—
t10(E)	93	#6	8'-3"	—
u10(E)	20	#5	6'-7"	—
v10(E)	35	#6	9'-10"	—
v11(E)	35	#5	12'-1"	—
v12(E)	105	#5	2'-3"	—
v13(E)	4	#5	5'-1"	—
v14(E)	35	#5	6'-0"	—
v15(E)	98	#7	12'-0"	—
v16(E)	16	#5	17'-0"	—
v17(E)	34	#5	17'-8"	—
v18(E)	6	#5	4'-6"	—
v19(E)	6	#5	5'-4"	—
v20(E)	6	#5	5'-11"	—
v22(E)	98	#7	9'-1"	—
v23(E)	16	#5	14'-0"	—
v24(E)	20	#5	14'-2"	—
w10(E)	18	#5	8'-3"	—
Concrete Structures		Cu. Yd.	100.6	
Structure Excavation		Cu. Yd.	420	
Reinforcement Bars, Epoxy Coated		Pound	10,879	
Test Pile Steel HP12x74		Each	1	
Test Pile Steel HP12x84		Each	1	
Furnishing Steel Piles HP12x74		Foot	1007	
Furnishing Steel Piles HP12x84		Foot	384	
Driving Piles		Foot	1391	
Form Liner Texturized Surface		Sq. Ft.	356	
Concrete Encasement		Cu. Yd.	2.5	

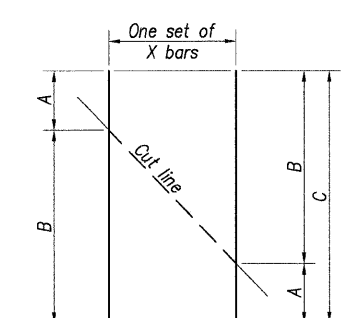
Bar	No.	Size	Length	Shape
h10(E)	26	#6	34'-3"	—
h11(E)	12	#5	34'-3"	—
h12(E)	22	#5	9'-11"	—
h13(E)	17	#5	5'-4"	—
h14(E)	34	#5	5'-4"	—
h15(E)	8	#5	3'-0"	—
h18(E)	24	#5	20'-4"	—
h17(E)	4	#6	20'-9"	—
h18(E)	10	#5	6'-6"	—
h19(E)	10	#5	14'-6"	—
h20(E)	5	#5	6'-9"	—
h21(E)	8	#5	3'-4"	—
h22(E)	5	#5	10'-3"	—
h23(E)	10	#5	6'-6"	—
h24(E)	6	#5	5'-9"	—
h25(E)	3	#5	30'-2"	—
h26(E)	14	#5	19'-4"	—
h27(E)	3	#5	5'-11"	—
h28(E)	3	#5	5'-2"	—
h29(E)	17	#5	5'-3"	—
n10(E)	98	#7	7'-1"	—
p10(E)	10	#7	38'-3"	—
s10(E)	24	#4	12'-5"	—
s11(E)	2	#4	9'-9"	—
s12(E)	2	#4	10'-3"	—
s13(E)	2	#4	10'-7"	—
s14(E)	2	#4	11'-1"	—
s15(E)	2	#4	11'-7"	—
s16(E)	4	#4	12'-7"	—
t10(E)	93	#6	8'-3"	—
u10(E)	28	#5	6'-7"	—
v10(E)	35	#6	9'-10"	—
v11(E)	35	#5	12'-1"	—
v12(E)	105	#5	2'-3"	—
v13(E)	4	#5	5'-1"	—
v14(E)	35	#5	6'-0"	—
v15(E)	98	#7	12'-0"	—
v16(E)	16	#5	17'-0"	—
v17(E)	34	#5	17'-8"	—
v18(E)	6	#5	4'-6"	—
v19(E)	6	#5	5'-4"	—
v20(E)	6	#5	5'-11"	—
v21(E)	6	#5	5'-11"	—
w10(E)	18	#5	8'-3"	—
Concrete Structures		Cu. Yd.	118.5	
Structure Excavation		Cu. Yd.	559	
Reinforcement Bars, Epoxy Coated		Pound	12,470	
Test Pile Steel HP12x74		Each	1	
Test Pile Steel HP12x84		Each	1	
Furnishing Steel Piles HP12x74		Foot	931	
Furnishing Steel Piles HP12x84		Foot	384	
Driving Piles		Foot	1315	
Form Liner Texturized Surface		Sq. Ft.	474	
Concrete Encasement		Cu. Yd.	2.5	



DESIGNED	T.M.M.
CHECKED	C.M.W.
DRAWN	B.D.M./S.H.K.
CHECKED	C.M.W.

Hoelscher Engineering, P.C.

11 Executive Drive Suite 12
Fairview Heights, Illinois 62208
(618)624-8610 FAX: (618)624-8611



FIELD CUTTING DIAGRAM

Order bars full length. Cut to fit as shown and use remainder of bars in other face. See Sheet Nos. 16 and 19.

Bar	A	B	C	X
h26(E)	4'-7"	14'-9"	19'-4"	7
h34(E)	3'-0"	11'-2"	14'-2"	5
v17(E)	5'-0"	12'-8"	17'-8"	17
v24(E)	5'-3"	8'-11"	14'-2"	10

NOTES

1. Reinforcement bars designated (E) shall be epoxy coated.
2. For West Abutment plan and details see Sheet Nos. 17, 18 and 19.
3. For East Abutment plan and details see Sheet Nos. 20, 21 and 22.
4. For Cahokia symbol details see Special Provisions.
5. For random width board texture and stone faced details See Special Provisions.

REVISIONS	
NAME	DATE

ILLINOIS DEPARTMENT OF TRANSPORTATION
ABUTMENT DETAILS - BILL OF MATERIAL
WEST CORBIN STREET OVER F.A.P. 310 (IL-255)
F.A.U. 8959 SECTION 05-00016-03-BR
MADISON COUNTY
STATION 36+23.37
STRUCTURE NO. 060-6851