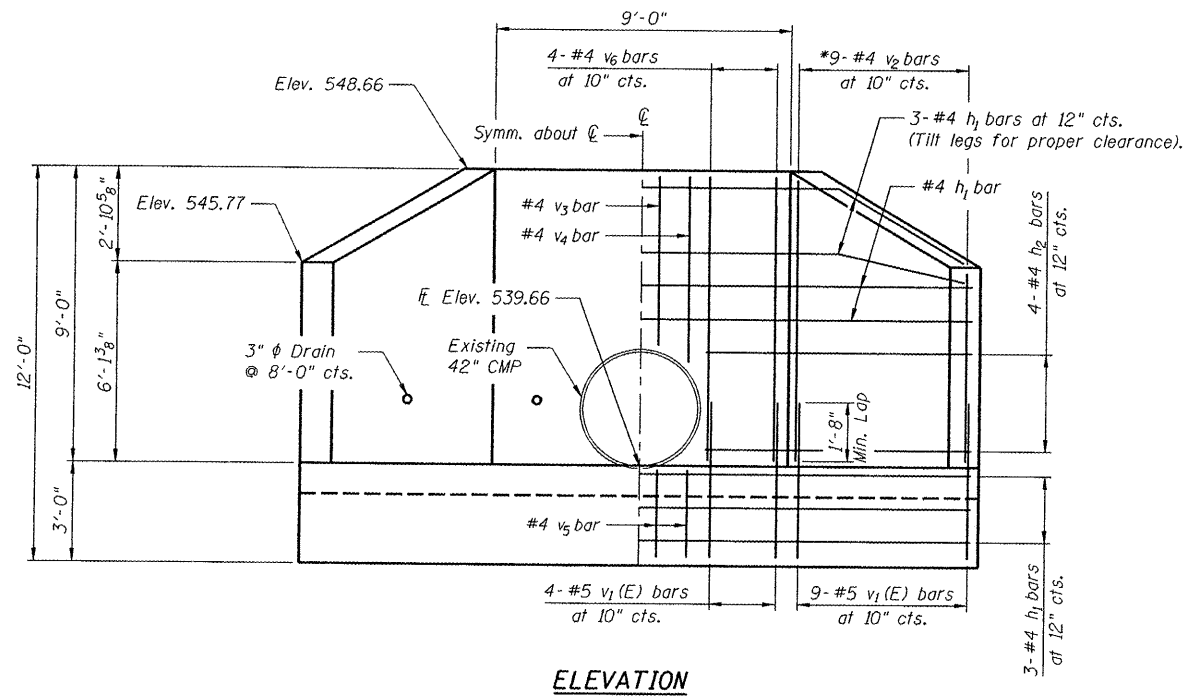
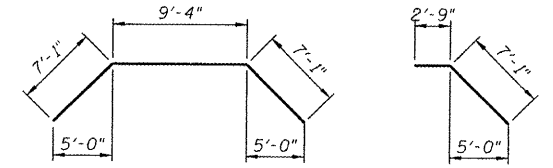


\*See Field Cutting Diagram



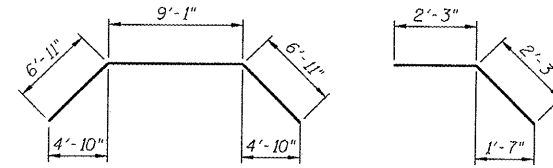
**ELEVATION**



**BAR h1**

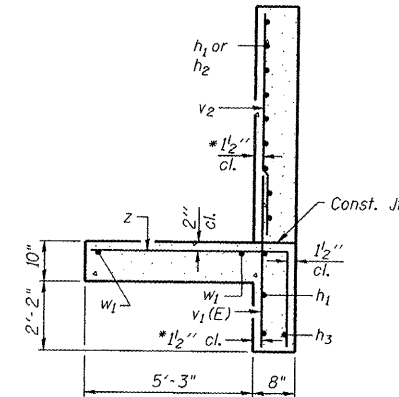
**BAR h2**

**BAR z**



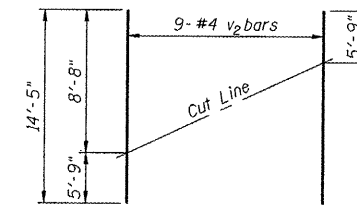
**BAR h3**

**BAR w2**



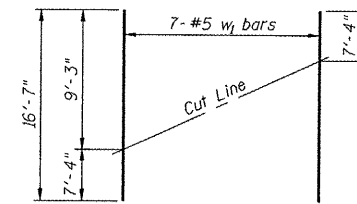
**SECTION A-A**

\* v bars shall not be placed more than 1/2" cl. from back face of wingwall.



**FIELD CUTTING DIAGRAM**

Order v2 full length. Cut as shown and use remainder of bars in other wingwall.

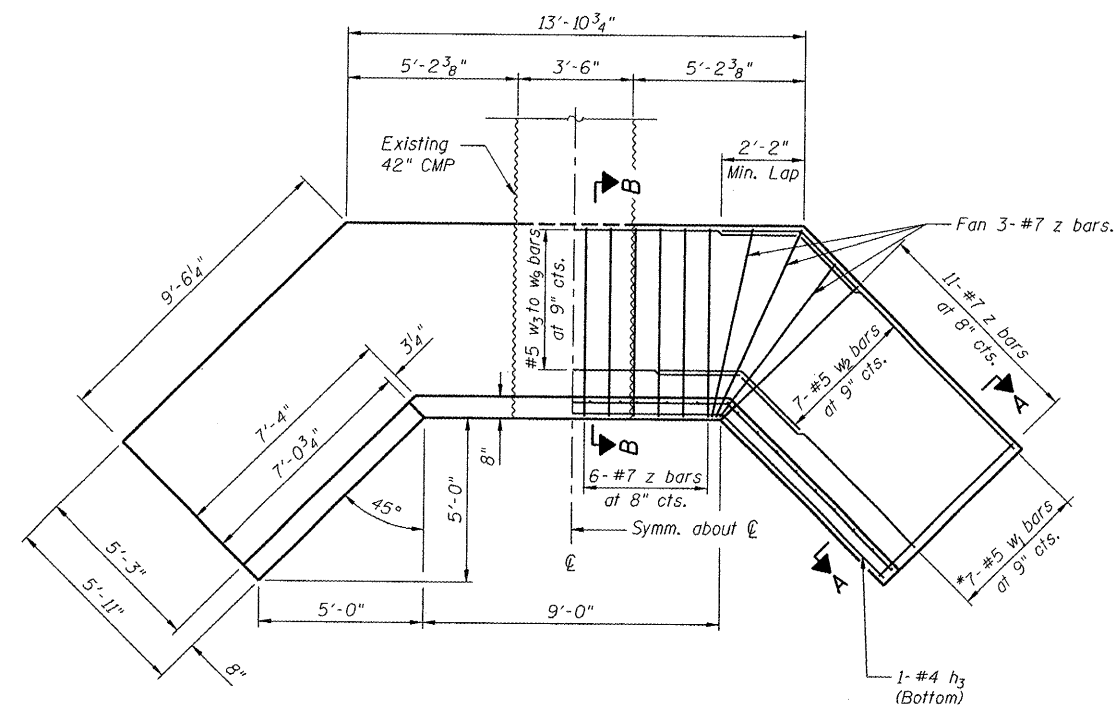


**FIELD CUTTING DIAGRAM**

Order w1 full length. Cut as shown and use remainder of bars in other wingwall footing.

**DESIGN STRESSES**

$f_y = 60,000 \text{ psi}$   
 $f'_c = 3,500 \text{ psi}$



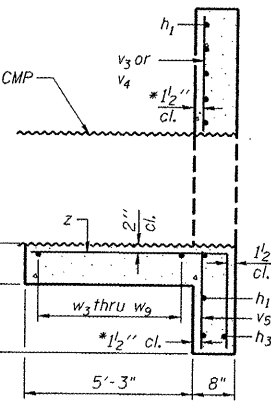
**PLAN**

**BILL OF MATERIAL**

Bar	No.	Size	Length	Shape
h1	8	#4	23'-6"	U
h2	8	#4	9'-10"	U
h3	1	#4	22'-11"	U
v1(E)	26	#5	4'-9"	—
v2	9	#4	14'-5"	—
v3	2	#4	5'-1"	—
v4	2	#4	5'-8"	—
v5	4	#4	2'-7"	—
v6	8	#4	8'-8"	—
w1	7	#5	16'-7"	—
w2	14	#5	4'-6"	—
w3	1	#5	13'-9"	—
w4	1	#5	13'-1"	—
w5	1	#5	12'-5"	—
w6	1	#5	11'-9"	—
w7	1	#5	11'-1"	—
w8	1	#5	10'-5"	—
w9	1	#5	9'-9"	—
z	40	#7	8'-4"	—
Concrete Box Culverts				Cu. Yd. 10.9
Reinforcement Bars, Epoxy Coated				Pound 130
Reinforcement Bars				Pound 1300

Reinforcement bars shall conform to the requirements of ASTM A706 Gr. 60. See Special Provisions.

Reinforcement bars designated (E) shall be epoxy coated.



**SECTION B-B**

\* v bars shall not be placed more than 1/2" cl. from back face of wingwall.

**CAST-IN-PLACE REINFORCED CONCRETE END SECTION 42", SPECIAL  
STA 111+68.98 48.82' LT**

REVISIONS	
NAME	DATE

MISCELLANEOUS DETAILS

US 40 AND  
TROY-O'FALLON ROAD IMPROVEMENTS  
CITY OF TROY  
MADISON COUNTY, ILLINOIS