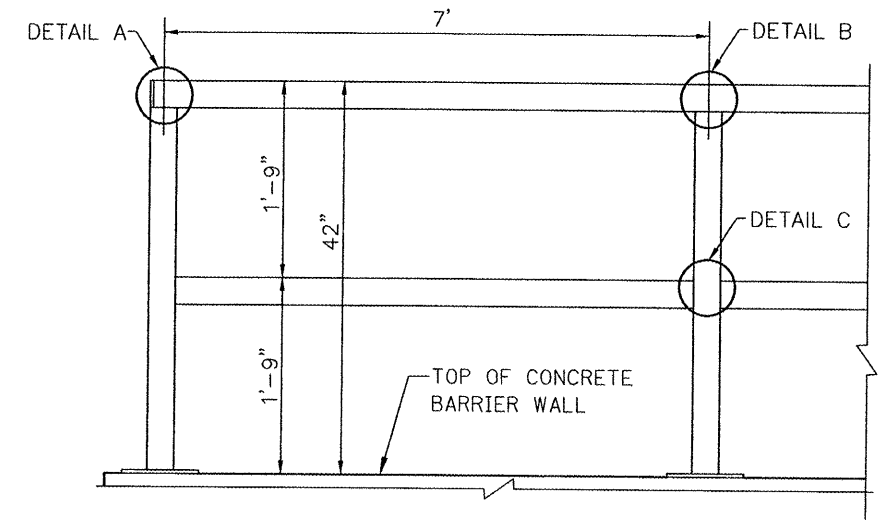
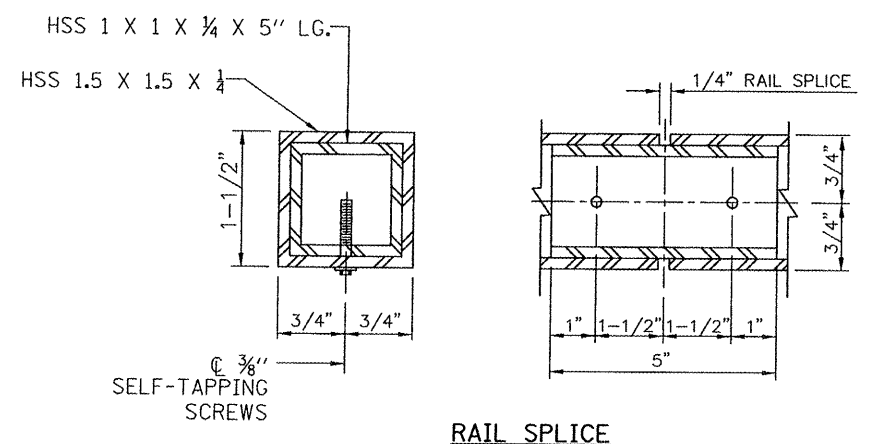
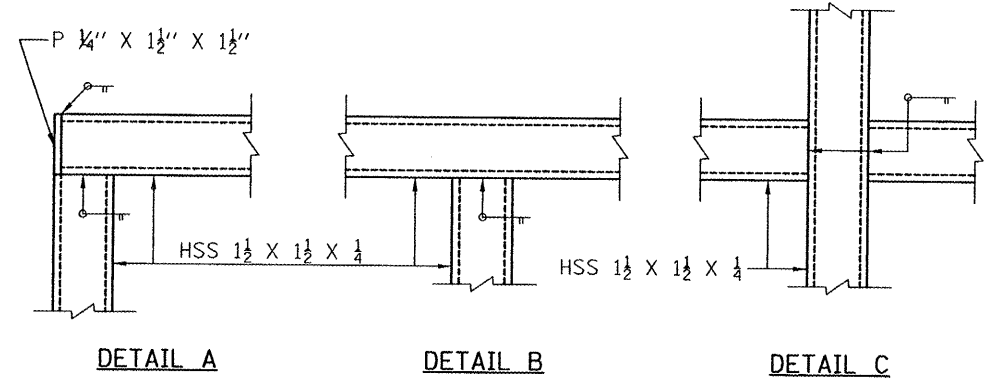


PAP NO.	SECTION	COUNTY	TOTAL SHEETS	SHEET NO.
793 3392	05-00025-00-TL 07-00025-01-WR	MADISON	135	92
STA.		TO STA.		

CONTRACT NO. 97352

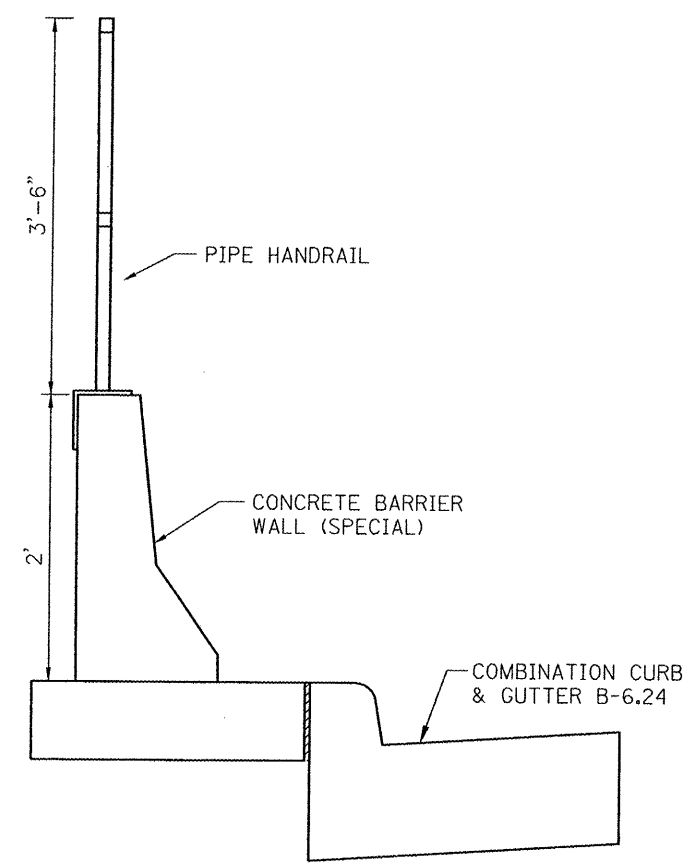


PIPE RAILING ELEVATION

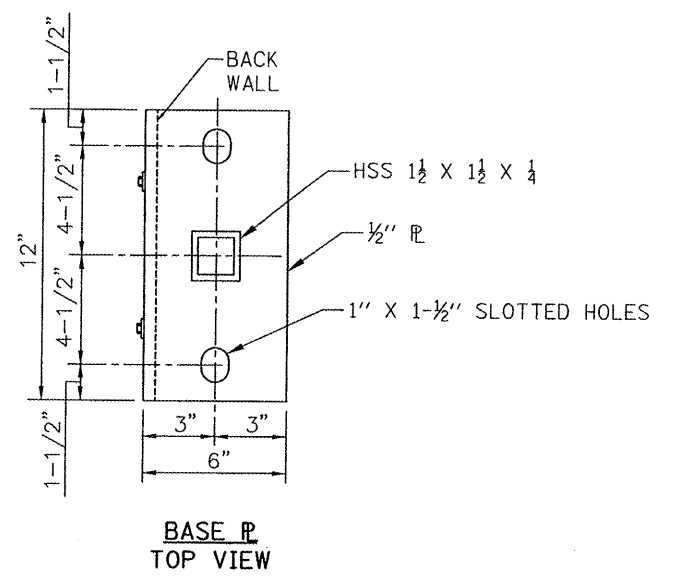


RAIL SPLICE

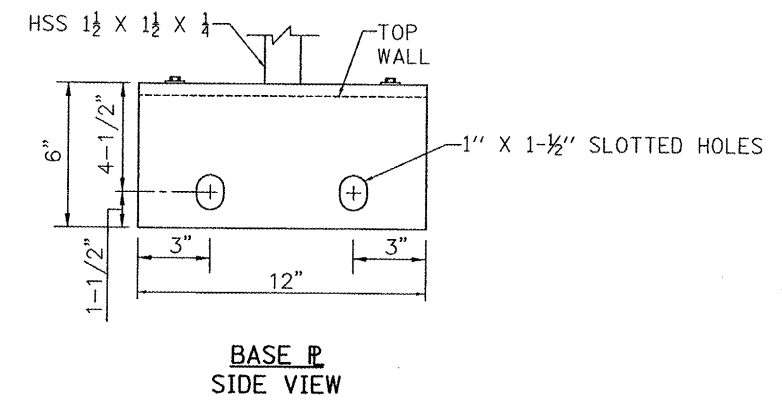
NOTES
ALL STEEL RAIL ELEMENTS SHALL BE GALVANIZED ACCORDING TO ARTICLE 509.05 OF THE STANDARD SPECIFICATIONS.



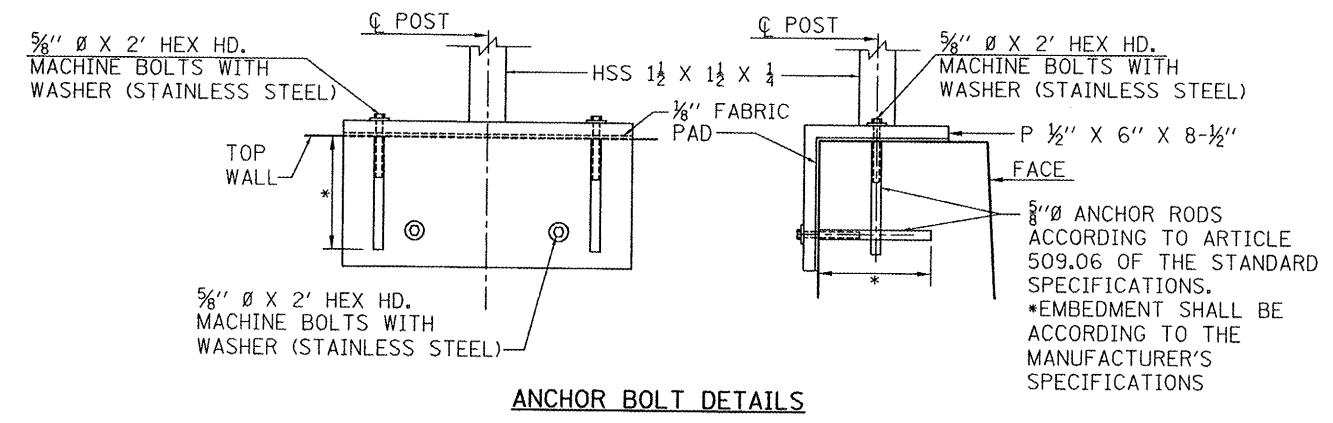
SECTION THRU WALL



BASE PL TOP VIEW



BASE PL SIDE VIEW



ANCHOR BOLT DETAILS

PIPE HANDRAIL DETAIL
TROY-O'FALLON ROAD
STA 100+88.50 TO 101+59.91 RT

REVISIONS	
NAME	DATE

MISCELLANEOUS DETAILS
US 40 AND
TROY-O'FALLON ROAD IMPROVEMENTS
CITY OF TROY
MADISON COUNTY, ILLINOIS

P:\050162D\dwg\050162D\DTL01.dwg 4/16/2008 9:02:13 AM CDT