

F.A.S. RTE.	SECTION	COUNTY	TOTAL SHEETS	SHEET NO.
CH 3	06-00052-00-BR	JERSEY	16	1
FEDERAL AID PROJECT		ILLINOIS	CONTRACT NO. 97359	

STATE OF ILLINOIS
DEPARTMENT OF TRANSPORTATION
DIVISION OF HIGHWAYS
PLANS FOR PROPOSED
HIGHWAY BRIDGE PROGRAM
CH 3 (KEMPER RD)
SECTION 06-00052-00-BR
PROJECT NO. BROS-0083(045)
JERSEY COUNTY
OVER TRIBUTARY TO MACOUPIN CREEK
JOB NUMBER C-98-346-08

INDEX OF SHEETS

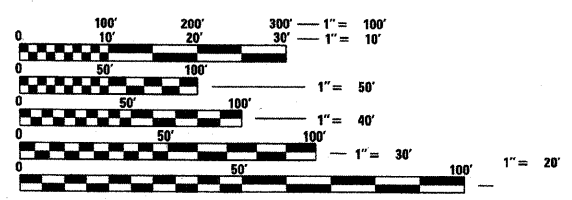
SHEET NO.	TITLE
1.	COVER SHEET
2.	SUMMARY OF QUANTITIES, GENERAL NOTES, TYPICAL CROSS SECTIONS
3.	PLAN AND PROFILE SHEET
4.	GUARDRAIL DETAILS
5.	SIGN LOCATION MAP, SIDE ROAD & ENTRANCE DETAILS
6.-11.	BRIDGE PLANS
12.-18.	STATION CROSS SECTIONS

LIST OF ILLINOIS DOT HIGHWAY STANDARDS

- 515001-03
- 630301-05
- 635006-03
- 701901-01
- BLR 21-9
- BLR 26-1
- BLR 27-1

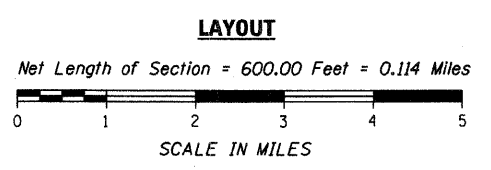
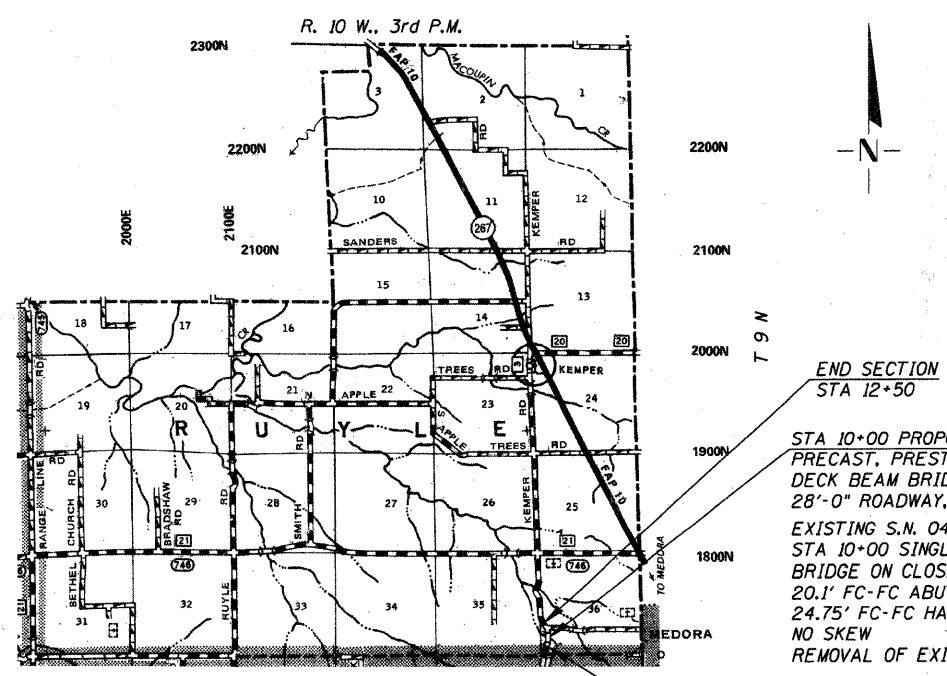
UTILITY CONTACTS:

UTILITY TYPE:	UTILITY TYPE:
GAS	FIBER OPTIC
AMEREN CIPS	FRONTIER COMMUNICATIONS
(217) 323-6438	(402) 250-1095
ATTN: JOHN BOZARTH	ATTN: BILL DANIEL
UTILITY TYPE:	UTILITY TYPE:
ELECTRIC	WATER
M.J.M. ELECTRIC COOP	JERSEY COUNTY RURAL WATER CO.
(217) 854-3137	(618) 498-9534
ATTN: CHARLIE BAKER	ATTN: GREG BATES



FULL SIZE PLANS HAVE BEEN PREPARED USING STANDARD ENGINEERING SCALES. REDUCED SIZED PLANS WILL NOT CONFORM TO STANDARD SCALES. IN MAKING MEASUREMENTS ON REDUCED PLANS, THE ABOVE SCALES MAY BE USED.

J.U.L.I.E.
 JOINT UTILITY LOCATION INFORMATION FOR EXCAVATION
 1-800-892-0123
 OR 811

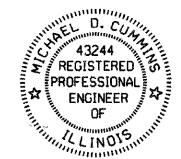


FUNCTIONAL CLASSIFICATION : COLLECTOR
 DESIGN SPEED 40 MPH
 CURRENT ADT= 225

END SECTION
 STA 12+50

STA 10+00 PROPOSED S.N. 042-3147
 PRECAST, PRESTRESSED CONCRETE
 DECK BEAM BRIDGE, ONE SPAN AT 30'-0"
 28'-0" ROADWAY, SKEW 0°

EXISTING S.N. 042-4011
 STA 10+00 SINGLE SPAN CONCRETE SLAB
 BRIDGE ON CLOSED CONCRETE ABUTMENTS
 20.1' FC-FC ABUTMENTS
 24.75' FC-FC HANDRAILS
 NO SKEW
 REMOVAL OF EXISTING STRUCTURES = 1 EACH



Michael D. Cummins 10/16/2008
 ILLINOIS PROFESSIONAL NO. 43244
 (Expires 11/30/09)

STATE OF ILLINOIS
 DEPARTMENT OF TRANSPORTATION

APPROVED October 20 2008

Thomas E. Kasper
 JERSEY COUNTY ENGINEER

PASSEL 11-7 2008

[Signature]
 DISTRICT EIGHT ENGINEER OF
 LOCAL ROADS AND STREETS

RELEASED FOR
 BID BASED ON
 LIMITED REVIEW 11-7 2008

Michael J. [Signature]
 DEPUTY DIRECTOR OF HIGHWAYS,
 REGION FIVE ENGINEER