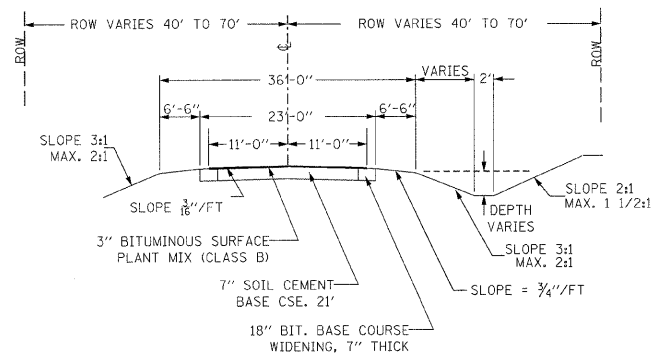


F.A.S.	SECTION	COUNTY	TOTAL SHEETS	SHEET NO.
883	06-00102-00-RS	WHITE	6	2
FED. ROAD DIST. NO. 1		ILLINOIS	NORRIS CITY WEST	
LEC JOB # H081002WH			CONTRACT # 99348	

TYPICAL CROSS SECTION

EXISTING

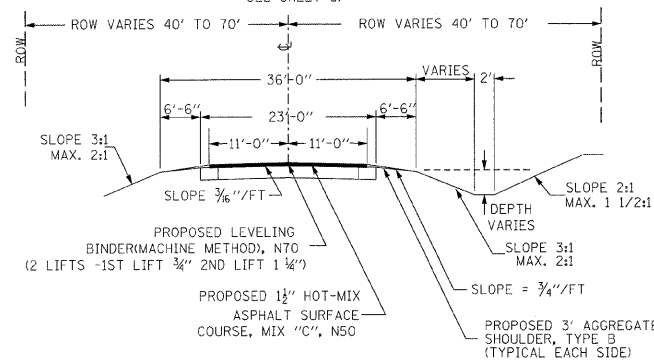
STA 7+82 TO STA 114+11
(EXCEPT STA 74+77 TO STA 75+78)



TYPICAL CROSS SECTION

PROPOSED

STA 7+82 TO STA 114+11
(EXCEPT STA 74+77 TO STA 75+78
SEE SHEET 3)



GENERAL NOTES:

THIS SECTION CONSISTS OF PAVEMENT REMOVAL AND REPLACEMENT SPECIAL, LEVELING BINDER (MACHINE METHOD) N70, AND HOT-MIX ASPHALT SURFACE COURSE, MIX "C", N50, AGGREGATE SHOULDERS, AND OTHER MISCELLANEOUS ITEMS NECESSARY TO COMPLETE THE PROJECT, ALL IN ACCORDANCE WITH THE PLANS, SPECIAL PROVISIONS AND "STANDARD SPECIFICATIONS FOR ROAD AND BRIDGE CONSTRUCTION" ADOPTED JANUARY 1, 2007.

THE EXISTING GRADE, ALIGNMENT, DRAINAGE STRUCTURES, BASE AND SURFACE WERE CONSTRUCTED UNDER SECTIONS 16-G, 16-Q AND 83-00053-00-WR AND SHALL REMAIN IN PLACE. ALL STATIONS REFERRED TO IN THE PLANS AND PROPOSAL ARE REFERENCED TO THE ABOVE MENTIONED SECTIONS.

MAXIMUM PERCENT OF GRADE	3.29 %
MINIMUM STOPPING SIGHT DISTANCE	425 FT
DESIGN SPEED	50 MPH
CURRENT ADT	970 - 1330 VPD
DESIGN ADT (20 YEAR)	1360 - 1970 VPD

THE HOT-MIX ASPHALT SURFACE COURSE, MIX "C", N50 SHALL BE PLACED IN ONE LIFT WITH A MINIMUM THICKNESS OF 1 1/2".

THE QUANTITY SHOWN IN THE SUMMARY OF QUANTITIES FOR HOT-MIX ASPHALT SURFACE COURSE, MIX "C", N50 ALLOWS 316.7 TON FOR THE INTERSECTIONS, SIDEROADS, AND TAPERS; 339.1 TON FOR THE ENTRANCES; 65.4 TON FOR THE MAILBOX TURNOUTS, 30 TON FOR THE PARKING AREA; TON TON FOR THE UTILITIES IN THE SHOULDER; AND 2776.0 TON FOR THE MAIN LINE HOT-MIX ASPHALT SURFACE COURSE, MIX "C", N50.

A HOT-MIX ASPHALT TAPER OF 0" TO 3 1/2" SHALL BE CONSTRUCTED FROM STATION 7+32 TO STATION 8+32.

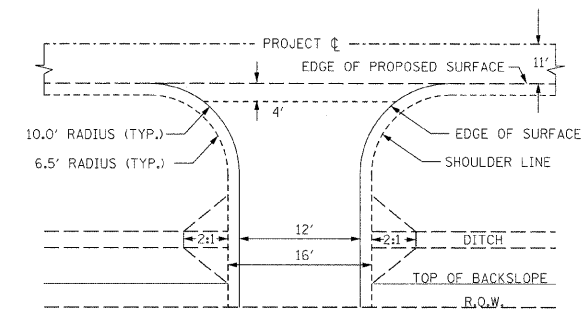
THE QUANTITY SHOWN FOR HOT-MIX ASPHALT SURFACE REMOVAL 2" ALLOWS FOR 840 SY OF THE MAIN LINE AND 321 SY FOR THE PARKING AREA.

THE FOLLOWING RATES HAVE BEEN USED TO CALCULATE PLAN QUANTITIES:

AGGREGATE SHOULDERS TY. B	1.8 T / CU YD
HOT-MIX ASPHALT	0.0560 T / SQ YD • INCH
BITUMINOUS MATERIAL (PRIME COAT)	0.05 GAL / SQ YD

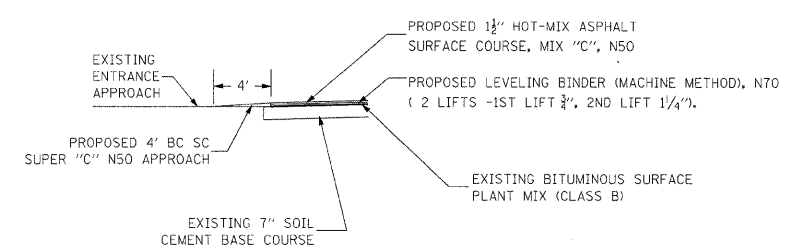
THE QUANTITY SHOWN IN THE SUMMARY OF QUANTITIES FOR GRADING AND SHAPING DITCHES ALLOWS 50 FOOT AT EACH END OF ALL PIPES TO BE REMOVED AND RELAYED AT STATIONS SHOWN IN SCHEDULE.

DETAIL OF PRIVATE AND FIELD ENTRANCES



NOTE: THE 4' AREA FROM THE EDGE OF SURFACE, AS SHOWN ABOVE, SHALL BE HOT-MIX ASPHALT SURFACE COURSE, MIX "C", N50 FOR THE PRIVATE ENTRANCES AND THE FIELD ENTRANCES. THIS QUANTITY IS INCLUDED IN THE QUANTITY FOR HOT-MIX ASPHALT SURFACE COURSE, MIX "C", N50.

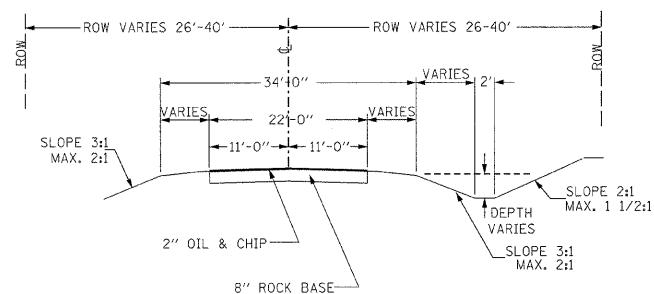
PRIVATE & FIELD ENTRANCE APPROACH DETAIL



TYPICAL CROSS SECTION

EXISTING

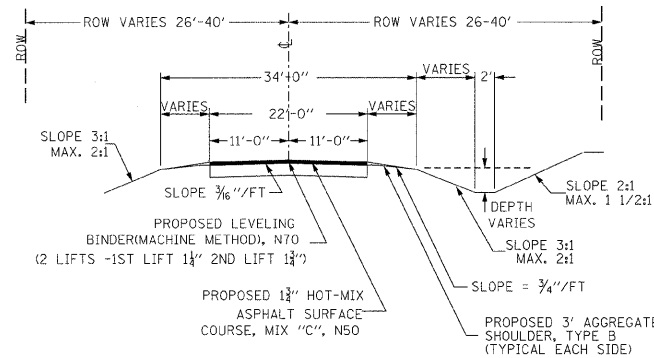
STA 114+11 TO STA 136+38



TYPICAL CROSS SECTION

PROPOSED

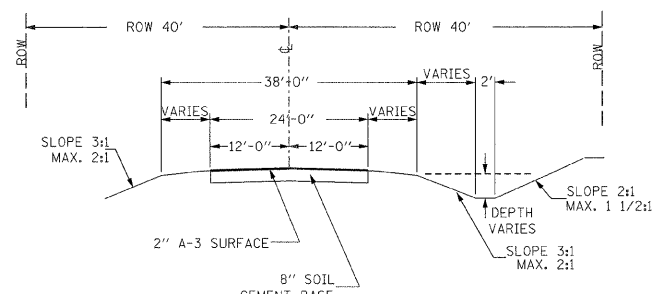
STA 114+11 TO STA 136+38



TYPICAL CROSS SECTION

EXISTING

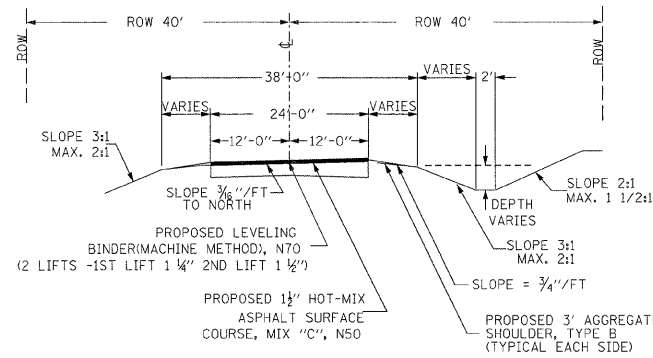
STA 136+38 TO STA 139+68



TYPICAL CROSS SECTION

PROPOSED

STA 136+38 TO STA 139+68

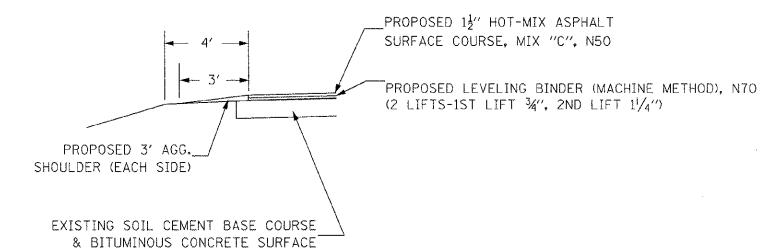


SCHEDULE FOR SUPERELEVATION RATES

CURVE #1

TANGENT RUNOFF BEGINS STA. 8+83.62
S.E. RUNOFF BEGINS STA. 9+16.62
FULL S.E. BEGINS STA. 10+26.62
FULL S.E. ENDS STA. 15+17.28
S.E. RUNOFF ENDS STA. 16+27.28
TANGENT RUNOFF ENDS STA. 16+60.28
S.E. RATE = 0.050 FT / FT

AGGREGATE SHOULDER DETAIL



323 W. 3RD ST.
P.O. BOX 160
MT. CARMEL, IL
62863
PHONE:
(618)-262-8651
FAX:
(618)-263-3327

405 W. STATE ST.
SUITE 1
PRINCETON, IN
47670
PHONE:
(812)-386-7611
FAX:
(812)-385-2812



PROFESSIONAL
DESIGN FIRM
LAND SURVEY &
PROFESSIONAL
ENGINEERING
CORPORATION
184-000887
(62-032435)(35-002769)



AARON M. MEFFORD
NAME
Aaron Mefford
SIGNATURE
10-2-07
DATE
11-30-09
EXPIRES