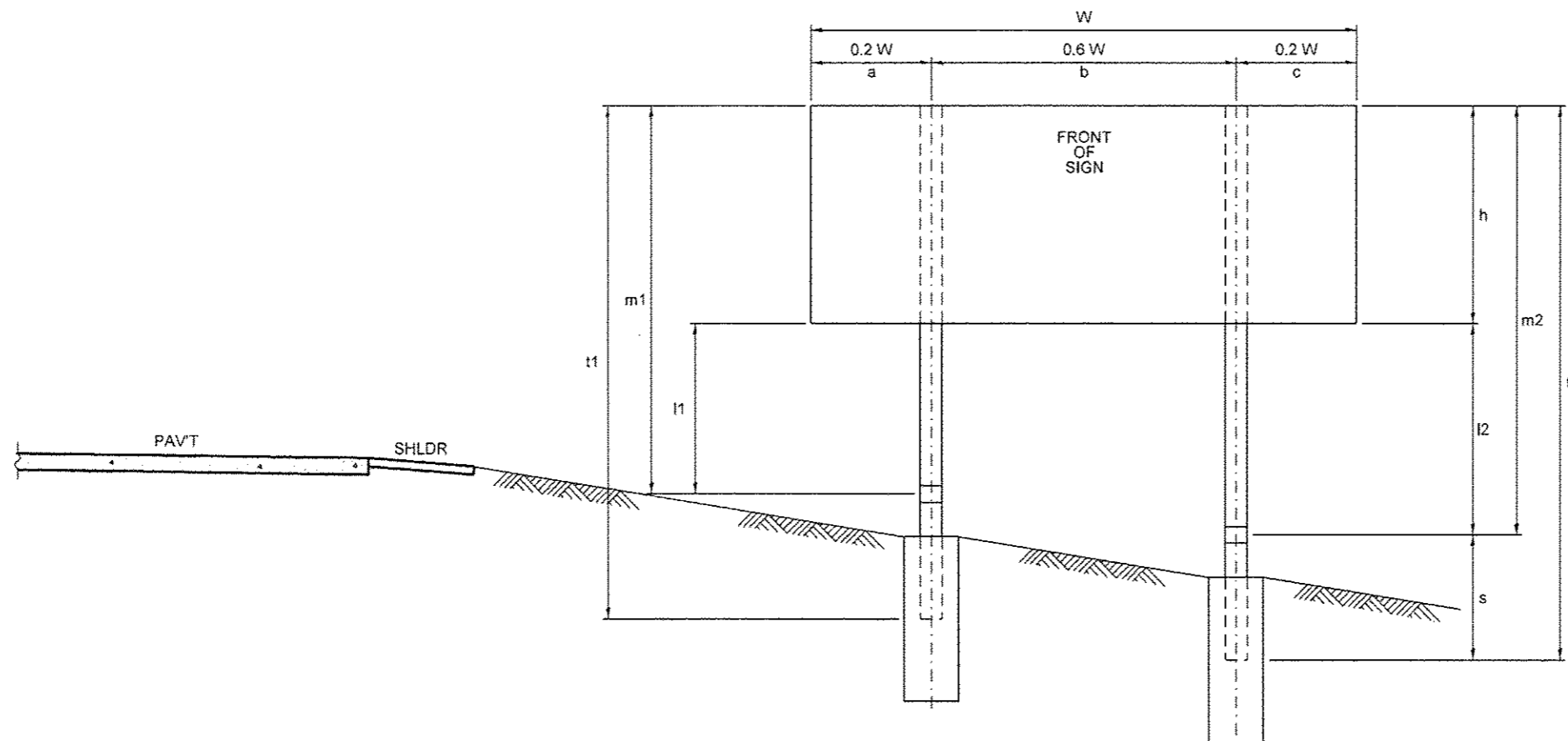


BREAK AWAY GROUND MOUNT SIGNAGE LAYOUT CHAMPAIGN COUNTY

Location No.	Structure No.	Mounting OFFSET to the near edge of sign	Mounting HEIGHT to the bottom edge of sign	Sign Size W x h ft	Sign Width W ft	0.2W a ft	0.6W b ft	0.2W c ft	Clear Height CH ft	Sign Height h ft	leg 1 l1 ft	leg 2 l2 ft	main post 1 m1 ft	main post 2 m2 ft	stub post s ft	Total post 1 t1 ft	Total post 2 t2 ft	Post Type	Nominal wt. lbs/ft	Total Weight (both posts) lbs	Total Concrete cu. yds.
5-03 WB	5 B 010 U136 L014.65	4 feet from face of guardrail 18.5 feet from white stripe / edge of pavement	8 feet from white stripe / edge of pavement	12.0' x 6.0'	12.0	2.4	7.2	2.4	10.0	6.0	9.0	10.0	15.0	16.0	2.5	17.5	18.5	W6 x 15	15.0	540.0	1.40
5-04 EB	5 B 010 U136 R014.63	4 feet from face of guardrail 17.5 feet from white stripe / edge of pavement	8 feet from white stripe / edge of pavement	12.0' x 6.0'	12.0	2.4	7.2	2.4	10.75	6.0	9.75	10.75	15.75	16.75	2.5	18.25	19.25	W6 x 15	15.0	562.5	1.40

Location No.	Structure No.	Station - Proposed Location
5-03 WB	5 B 010 U136 L014.65	The proposed breakaway ground mount is to be at Sta. 216+35. This is 56' east of the east overhead bridge fascia beam.
5-04 EB	5 B 010 U136 R014.63	The proposed breakaway ground mount is to be at Sta. 213+67. This is 56' west of the west overhead bridge fascia beam.



CH = Clear Height = the greater of l1 or l2

• D-5 OVD SIN STR REPL 2014-10

FILE NAME =	USER NAME = bucklesj	DESIGNED - JAL	REVISED -	STATE OF ILLINOIS DEPARTMENT OF TRANSPORTATION	BREAK AWAY GROUND MOUNT SIGNAGE LAYOUT CHAMPAIGN COUNTY	F.A. RTE.	SECTION	COUNTY	TOTAL SHEETS	SHEET NO.
o:\p-work\prios\bucklesj\0336951\0546271-Sht-Details.dgn	DRAWN -	REVISD -	VAR.				VARIOUS	17	20	
PLOT SCALE = 48,0000' / in.	CHECKED -	REVISED -					CONTRACT NO. 46271			
PLOT DATE = 10/8/2013	DATE - 04/26/11	REVISED -				SCALE:	SHEET NO. 15 OF 17 SHEETS	STA.	TO STA.	ILLINOIS FED. AID PROJECT