

STATE OF ILLINOIS  
DEPARTMENT OF TRANSPORTATION  
DIVISION OF HIGHWAYS

F.A.P. RTE.	SECTION	COUNTY	TOTAL SHEETS	SHEET NO.
330	2010-082-1	COOK	152	1
		ILLINOIS	CONTRACT NO. 60L73	

\*152+6=158

FOR INDEX OF SHEETS, SEE SHEET NO. 2

PROJECT IS LOCATED IN THE CITY OF COUNTRYSIDE AND VILLAGE OF HODGKINS

**TRAFFIC DATA**  
ADT:

US RTE. 12/20/45 (SOUTH LEG) = 36,400 (2003) 37,000 (2030)  
US RTE. 12/20/45 (NORTH LEG) = 38,700 (2003) 39,000 (2030)  
JOLIET ROAD (WEST LEG) = 22,600 (2003) 22,000 (2030)  
JOLIET ROAD (EAST LEG) = 23,500 (2003) 22,000 (2030)

**DESIGN SPEED:**

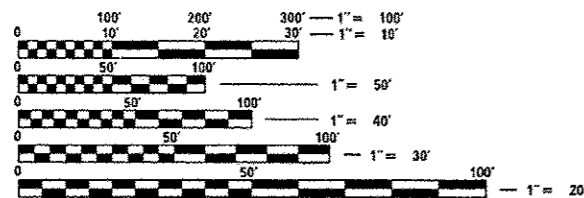
US RTE. 12/20/45 = 45 MPH  
JOLIET ROAD (WEST LEG) = 50 MPH  
JOLIET ROAD (EAST LEG) = 45 MPH

**POSTED SPEED LIMIT:**

US RTE. 12/20/45 = 35 MPH  
JOLIET ROAD (WEST LEG) = 40 MPH  
JOLIET ROAD (EAST LEG) = 35 MPH

**DESIGN DESIGNATION:**

US RTE. 12/20/45 3,680(30) OTHER PRINCIPAL ARTERIAL 4.84 (FD-20)  
JOLIET ROAD 2,125(30) MINOR ARTERIAL 4.84 (FD-20)

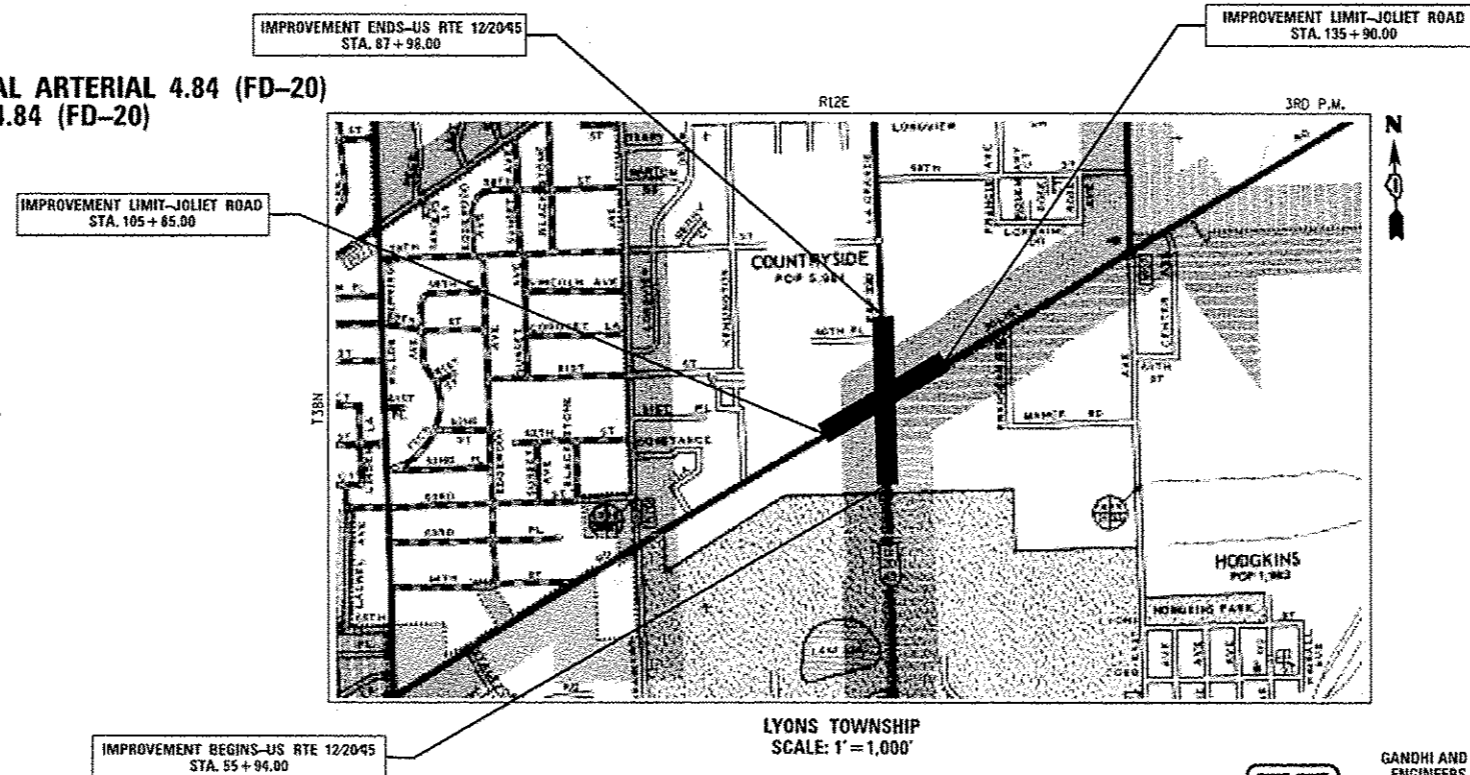


FULL SIZE PLANS HAVE BEEN PREPARED USING STANDARD ENGINEERING SCALES. REDUCED SIZED PLANS WILL NOT CONFORM TO STANDARD SCALES. IN MAKING MEASUREMENTS ON REDUCED PLANS, THE ABOVE SCALES MAY BE USED.

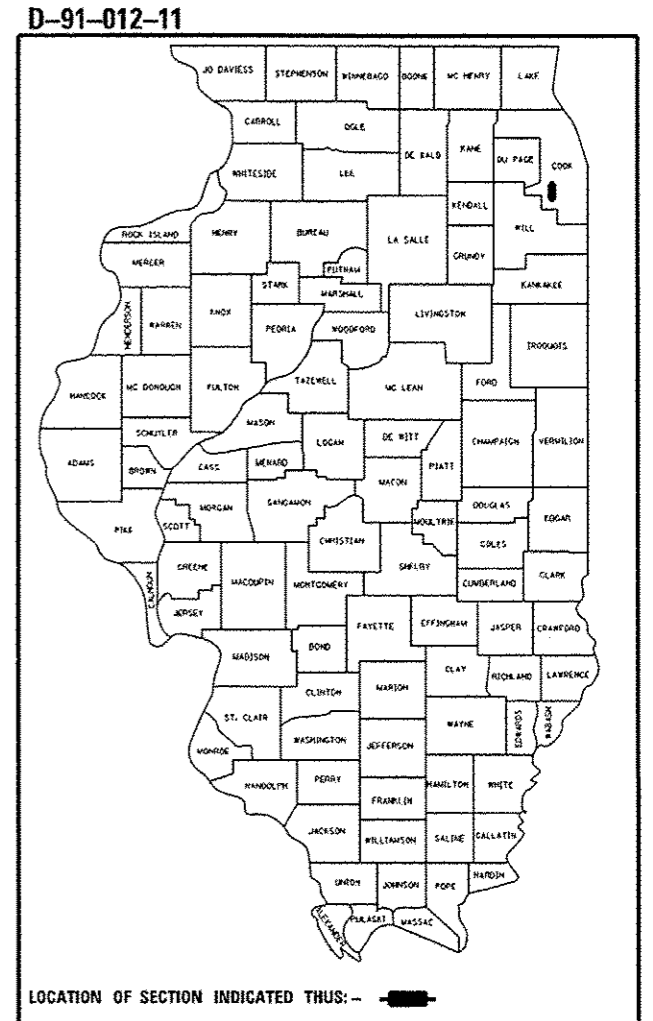
J.U.L.I.E.  
JOINT UTILITY LOCATION INFORMATION FOR EXCAVATION  
1-800-892-0123  
OR 811

DISTRICT ONE - DESIGN  
PROJECT MANAGER: ISAAC KWARTENG (847) 705-4230  
PROJECT ENGINEER: ALIX BRICE (847) 705-4552  
CONTRACT NO. 60L73

FAP ROUTE 330 (US RTE. 12/20/45) (LaGRANGE ROAD)  
SECTION NO.: 2010-082-1  
AT JOLIET ROAD  
PROJECT NO.: ACNHPP-0330(075)  
INTERSECTION RECONSTRUCTION  
COOK COUNTY  
C-91-012-11



GROSS & NET LENGTH OF PROJECT = 1,983 FT. = 0.37 MILES



STATE OF ILLINOIS  
DEPARTMENT OF TRANSPORTATION  
DIVISION OF HIGHWAYS

SUBMITTED October 8 2013  
John P. ...  
DEPUTY DIRECTOR OF HIGHWAYS, REGION ENGINEER

Dec 6 2013  
John D. Baranzelli, PE, LE  
ENGINEER OF DESIGN AND ENVIRONMENT

Dec 6 2013  
Omer Osman, PE, LE  
DIRECTOR OF HIGHWAYS, CHIEF ENGINEER

PRINTED BY THE AUTHORITY  
OF THE STATE OF ILLINOIS

GANDHI AND ASSOCIATES, INC.  
ENGINEERS AND PLANNERS  
6035 N. NORTHWEST HIGHWAY, SUITE 306  
CHICAGO, IL 60631  
(773) 774-5910

SIGNATURE: [Signature]  
DATE: 10-7-2013  
IL LICENSE NO. 062-034993  
EXP. DATE: NOVEMBER 30, 2013  
FIELD: GANDHI AND ASSOCIATES, INC.  
TRAFFIC SIGNALS/ROADWAY LIGHTING  
(SHEETS 74 TO 114)

JAMES J. BENES & ASSOCIATES  
CONSULTING ENGINEERS  
950 WARRENVILLE ROAD, SUITE 101  
LISLE, IL 60532  
(630) 719-7870

SIGNATURE: [Signature]  
DATE: 10/7/2013  
IL LICENSE NO. 062-045065  
EXP. DATE: NOVEMBER 30, 2013  
FIELD: JAMES J. BENES AND ASSOCIATES, INC.  
CIVIL ENGINEERING  
(SHEETS 1 TO 73 AND 115 TO 152)