

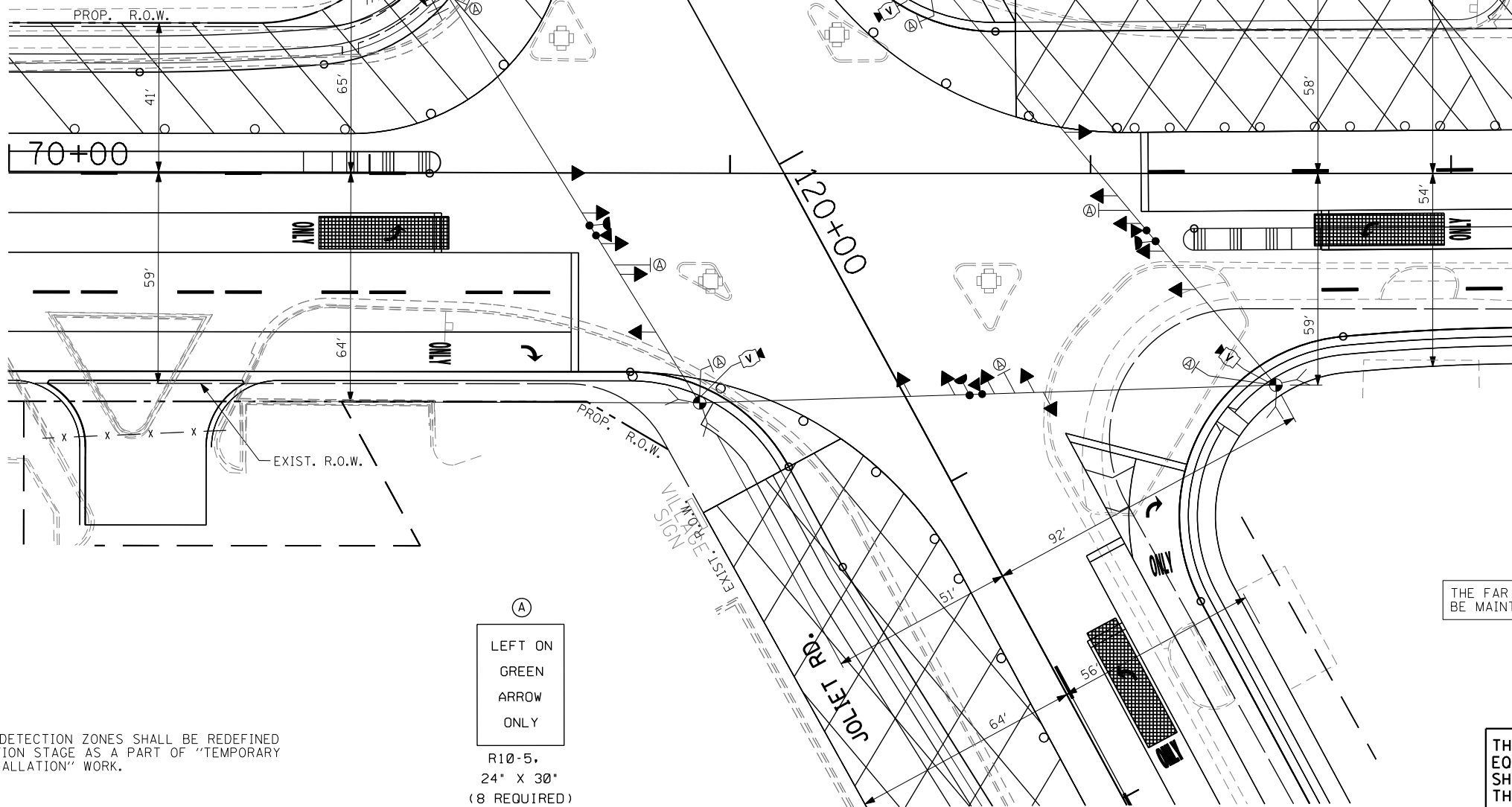
TEMPORARY RADIO INTERCONNECT TO JOLIET RD. AT BRAINARD AVE. (SEE TEMPORARY INTERCONNECT PLANS)

TEMPORARY RADIO INTERCONNECT TO US RTE 12/20/45 AT COUNTRYSIDE PLAZA (SEE TEMPORARY INTERCONNECT PLANS)

TEMPORARY RADIO INTERCONNECT TO JOLIET RD. AT QUARRY SHOPPING CENTER DRIVEWAY (SEE TEMPORARY INTERCONNECT PLANS)

TEMPORARY RADIO INTERCONNECT TO US RTE 12/20/45 AT 63RD STREET (SEE TEMPORARY INTERCONNECT PLANS)

US RTE 12/20/45



NOTE 1: THE FAR OUT VIDEO DETECTION ZONES SHALL BE REDEFINED FOR EACH CONSTRUCTION STAGE AS A PART OF "TEMPORARY TRAFFIC SIGNAL INSTALLATION" WORK.

(A)
LEFT ON
GREEN
ARROW
ONLY

R10-5,
24" X 30"
(8 REQUIRED)

THE FAR OUT VIDEO DETECTION ZONES WILL BE MAINTAINED AS SHOWN ON SHEET NO. 82

THE TRAFFIC SIGNAL CONTROL EQUIPMENT FOR THIS PROJECT SHALL BE "EAGLE" TO MATCH THE EXISTING ADJACENT SYSTEM.

TEMPORARY TRAFFIC SIGNAL PLAN - STAGE 2

FILE NAME =	USER NAME = #USER#	DESIGNED - PKG	REVISED -	STATE OF ILLINOIS DEPARTMENT OF TRANSPORTATION	TEMPORARY TRAFFIC SIGNAL INSTALLATION PLAN US RTE 122045 (LAGRANGE RD.) AT JOLIET ROAD STAGE 2 (SHEET 4 OF 5)			F.A.P. RTE. 330	SECTION 2010-082-1	COUNTY COOK	TOTAL SHEETS 152	SHEET NO. 88
#FILEL#	PLOT SCALE = #SCALE#	DRAWN - MG, EA	REVISED -		SCALE: 1" = 20'	SHEET NO. OF SHEETS	STA. TO STA.	FED. ROAD DIST. NO. - ILLINOIS FED. AID PROJECT				
	PLOT DATE = #DATE#	CHECKED - PKG	REVISED -					CONTRACT NO. 60L73				
		DATE - 8/28/2013	REVISED -									