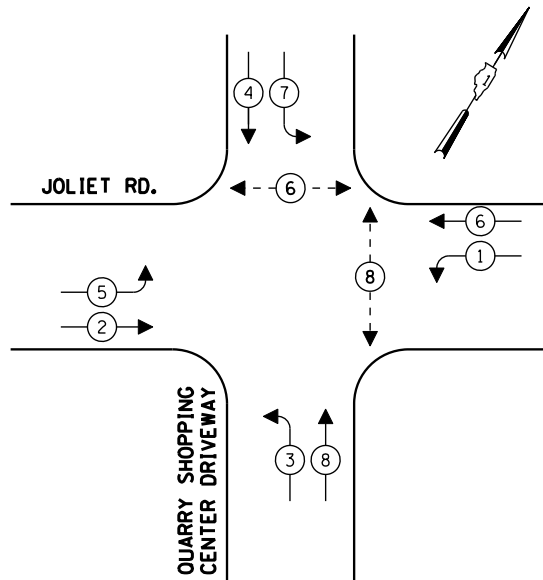


CONTROLLER SEQUENCE

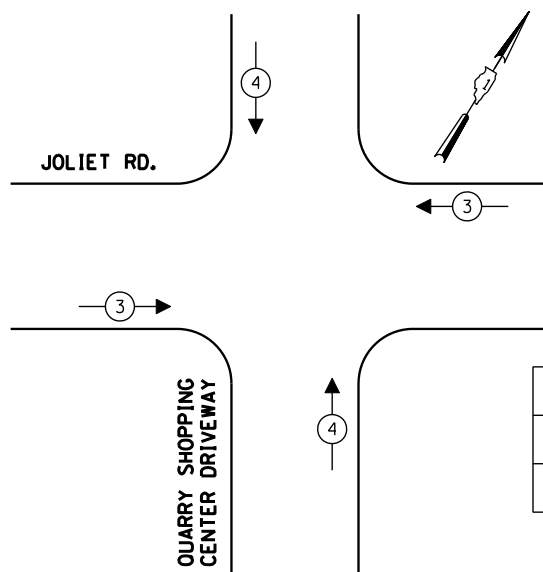


TEMPORARY PHASE DESIGNATION DIAGRAM
PRE-STAGE, S1, S2, AND S3

LEGEND

- ← ⊗ → DUAL ENTRY PHASE
- ← ⊠ → SINGLE ENTRY PHASE
- ◊ O.L. OVERLAP
- ← ⊗ → PEDESTRIAN PHASE
- * NUMBER REFERS TO ASSOCIATED PHASE

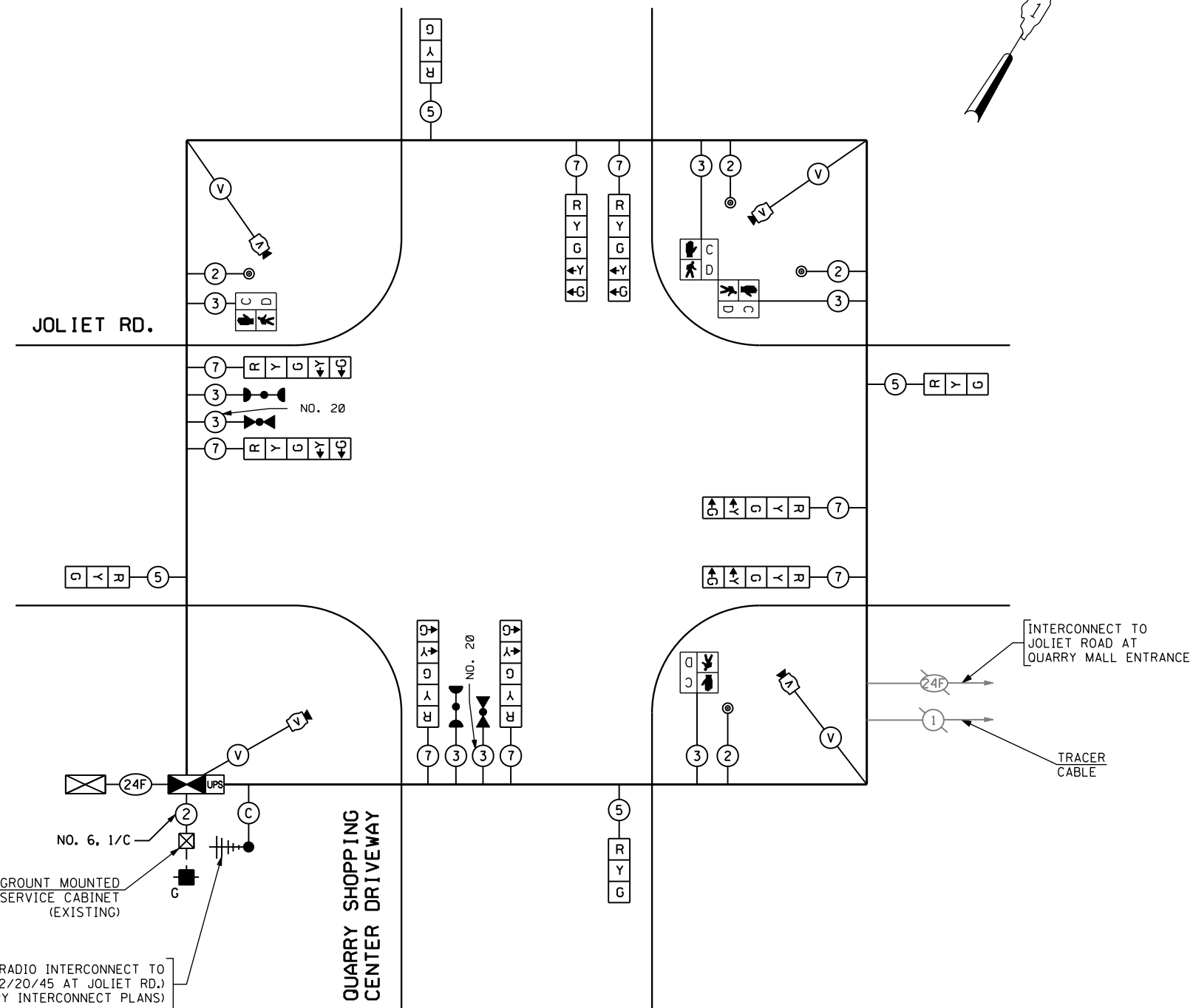
TEMPORARY EMERGENCY VEHICLE PREEMPTION SEQUENCE



PRE-STAGE, S1, S2, AND S3

TEMPORARY EMERGENCY VEHICLE PREEMPTORS			
EMERGENCY VEHICLE PREEMPTOR	3	4	
MOVEMENT	↔	↕	

I.D.O.T. TRAFFIC SIGNAL INSTALLATION ELECTRICAL SERVICE REQUIREMENTS						TOTAL WATTAGE
TYPE	NO LAMPS	WATTAGE		%OPERATION		
SIGNAL (RED)	12	135	17	0.50	102.0	
(YELLOW)	12	135	25	0.25	75.0	
(GREEN)	12	135	15	0.25	45.0	
ARROW	16	135	12	0.10	19.2	
PED. SIGNAL	4	90	25	1.00	100.0	
CONTROLLER	1	100	100	1.00	100.0	
ILLUM. SIGN				0.05		
VIDEO SYSTEM	1	150		1.00	150.0	
FLASHER				0.50		
ENERGY COSTS TO:					TOTAL =	591.2
CITY OF COUNTRYSIDE, ILLINOIS 5550 EAST AVENUE COUNTRYSIDE, ILLINOIS 60525						
ENERGY SUPPLY CONTACT: DOLORES KREMNIER PHONE: (815) 724-5241 COMPANY: COMMONWEALTH EDISON						



TEMPORARY CABLE PLAN

(NOT TO SCALE)

PRE-STAGE, S1, S2, AND S3

THE TRAFFIC SIGNAL CONTROL EQUIPMENT FOR THIS PROJECT SHALL BE "EAGLE" TO MATCH THE EXISTING ADJACENT SYSTEM.