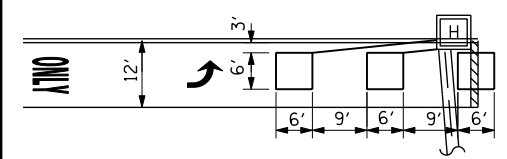
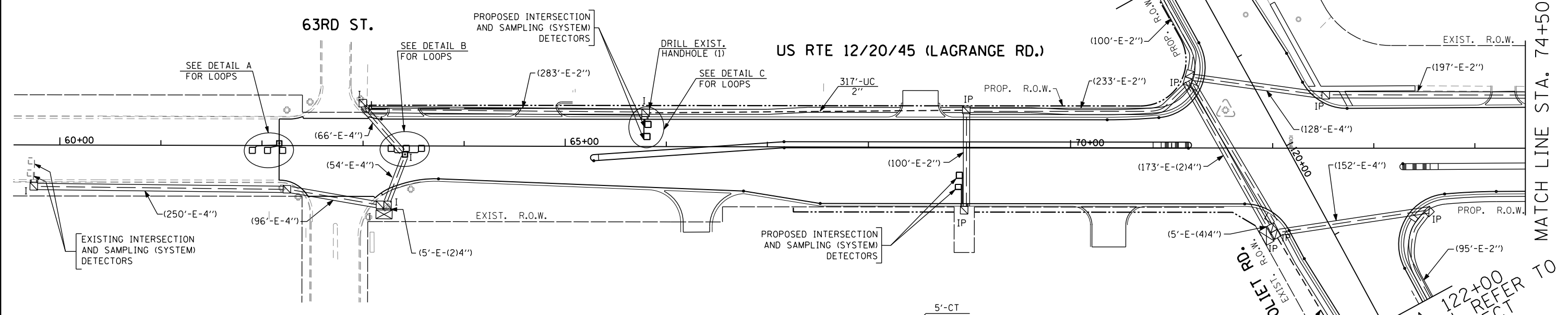
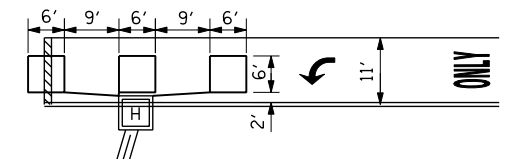


MATCH LINE STA. 118+00
 (FOR MORE INFORMATION,
 REFER TO JOLIET RD.
 INTERCONNECT PLANS
 (SHEET 2 OF 3))



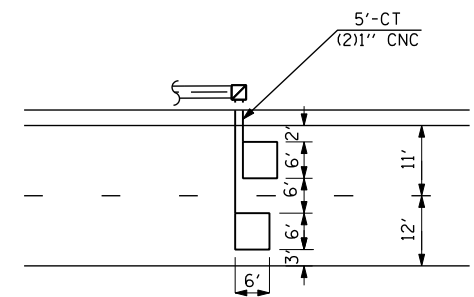
DETAIL "A"
 (NOT TO SCALE)

NOTE:
 FOR LOOP REPLACEMENT QUANTITIES;
 PLEASE REFER TO PROPOSED
 INTERCONNECT SCHEMATIC



DETAIL "B"
 (NOT TO SCALE)

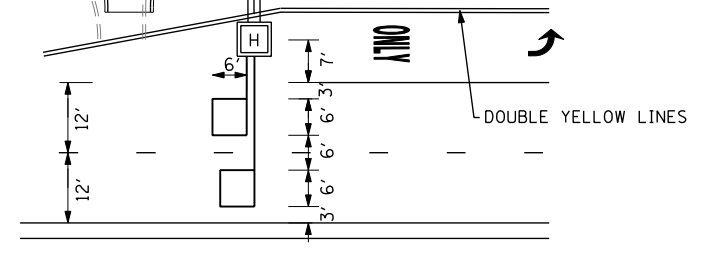
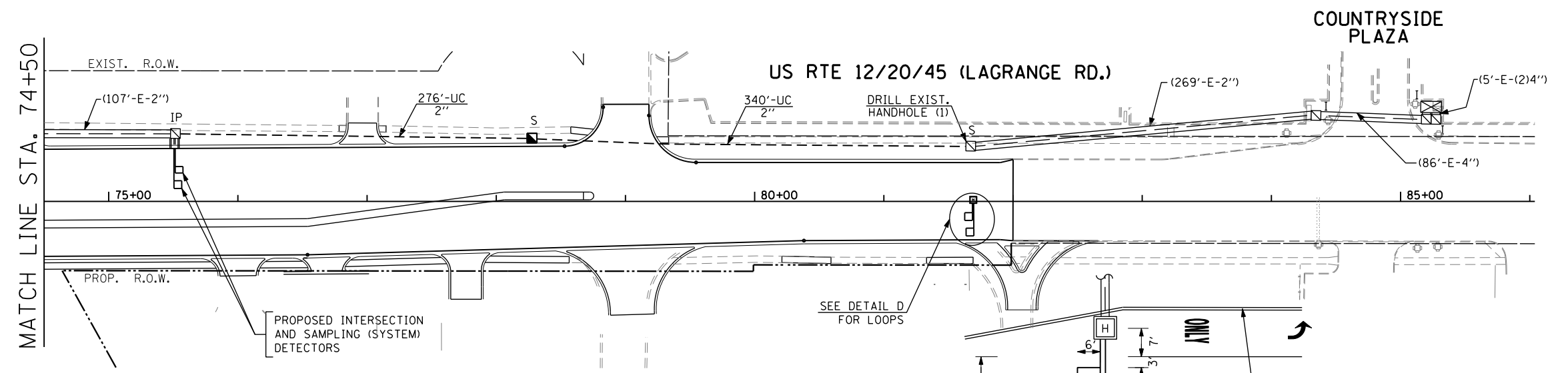
NOTE:
 FOR LOOP REPLACEMENT QUANTITIES;
 PLEASE REFER TO PROPOSED
 INTERCONNECT SCHEMATIC



DETAIL "C"
 (NOT TO SCALE)

NOTE:
 FOR LOOP REPLACEMENT QUANTITIES;
 PLEASE REFER TO PROPOSED
 INTERCONNECT SCHEMATIC

MATCH LINE STA. 122+00
 (FOR MORE INFORMATION, REFER
 TO JOLIET RD. INTERCONNECT
 PLANS (SHEET 3 OF 3))



(NOT TO SCALE)
 DETAIL "D"

NOTE:
 FOR LOOP REPLACEMENT QUANTITIES;
 PLEASE REFER TO PROPOSED
 INTERCONNECT SCHEMATIC

THE TRAFFIC SIGNAL CONTROL
 EQUIPMENT FOR THIS PROJECT
 SHALL BE "EAGLE" TO MATCH
 THE EXISTING ADJACENT SYSTEM.

FILE NAME =	USER NAME = #USER#	DESIGNED - PKG	REVISED -	STATE OF ILLINOIS DEPARTMENT OF TRANSPORTATION	PROPOSED INTERCONNECT PLAN US RTE 12/20/45 (LAGRANGE RD.) FROM 63RD ST. TO COUNTRYSIDE PLAZA (SHEET 1 OF 3)			F.A.P. RTE. 330	SECTION 2010-082-1	COUNTY COOK	TOTAL SHEETS 152	SHEET NO. 109
#FILEL#	PLOT SCALE = #SCALE#	DRAWN - MG, EA	REVISED -		SCALE: 1"= 50'	SHEET NO. OF SHEETS	STA. TO STA.	FED. ROAD DIST. NO. 1 ILLINOIS FED. AID PROJECT				
	PLOT DATE = #DATE#	CHECKED - PKG	REVISED -					CONTRACT NO. 60L73				
		DATE - 8/28/2013	REVISED -									