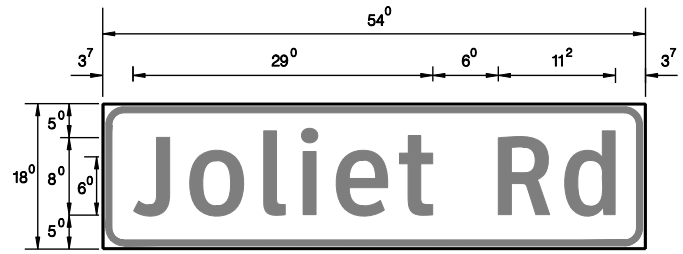
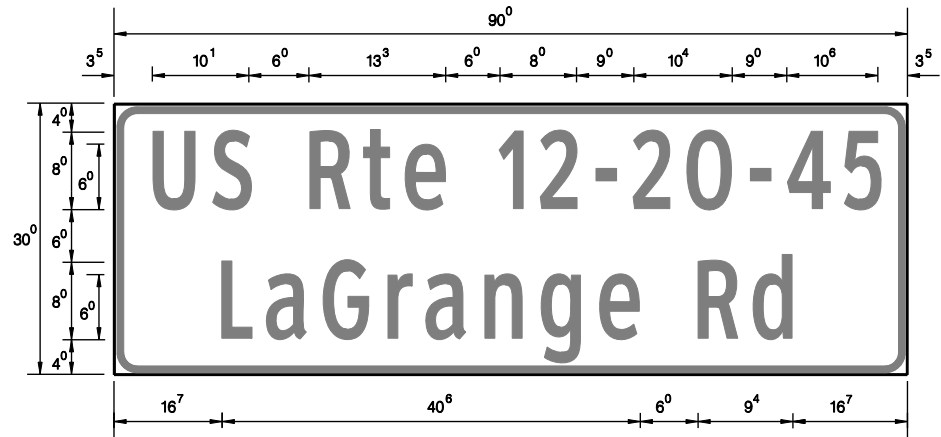


PANEL SIGN DESIGN TYPE I



- Sq. M. each
6.75 Sq. Ft. each
2 Required
Design Series D

PANEL SIGN DESIGN TYPE II



- Sq. M. each
18.75 Sq. Ft. each
2 Required
Design Series C

NOTE: SIGN DIMENSIONS ARE IN ENGLISH UNITS

GENERAL NOTES

- 1. WHERE MAST ARM MOUNTED STREET NAME SIGNS ARE SPECIFIED, THE MAST ARM ASSEMBLY AND POLES SHALL BE DESIGNED TO SUPPORT THE LOADINGS CALLED FOR ON STANDARDS 877001, 877002, 877006, 877011 AND 877012, AS APPLICABLE, PLUS TWO (2) SIGN PANELS 2'-6" x 8'-0" MOUNTED AS SHOWN. THE DESIGN SHALL BE IN ACCORDANCE WITH THE REQUIREMENTS OF THE CURRENT "STANDARD SPECIFICATIONS FOR STRUCTURAL SUPPORTS FOR HIGHWAY SIGNS, LUMINAIRES, AND TRAFFIC SIGNALS" AS PUBLISHED BY THE AMERICAN ASSOCIATION OF STATE HIGHWAY AND TRANSPORTATION OFFICIALS FOR 80 M.P.H. WIND VELOCITY.
2. ALL SIGNS SHALL HAVE A WHITE REFLECTORIZED LEGEND AND BORDER ON A GREEN REFLECTORIZED BACKGROUND, TYPE A SHEETING.
3. THE SIGN LENGTH SHOULD BE INCREASED IN 6-INCH INCREMENTS, BUT THE OVERALL LENGTH SHOULD NOT EXCEED 8'-0".
4. ALL BORDERS SHALL BE 3/4" WIDE AND CORNER RADIUS SHALL BE 2-1/4".
5. SIGNFIX ALUMINUM CHANNEL FRAMING SYSTEM SHALL BE USED FOR ALL SIGNS ATTACHED TO SIGNAL POLES AND POSTS. LOCAL SUPPLIERS OF THE SIGNFIX ALUMINUM CHANNEL FRAMING SYSTEM ARE:

* J.O. HERBERT CO. MIDLOTHIAN, VA.

* WESTERN REMAC INC. WOODRIDGE, IL.

PARTS LISTING:

- SIGN CHANNEL PART #HPN053 (MED. CHANNEL)
SIGN SCREWS 1/4" x 14 x 1" H.W.H. #3
BRACKETS PART #HPN034 (UNIVERSAL)

CHANNEL CLAMPS WITH STAINLESS STEEL STRAPPING
OTHER BRANDS OF MOUNTING HARDWARE ARE ACCEPTABLE, BASED UPON THE DEPARTMENT'S APPROVAL AND COMPATIBILITY WITH THE CHANNEL/BRAKET OF THE ABOVE PRODUCT.

SUPPORTING CHANNELS

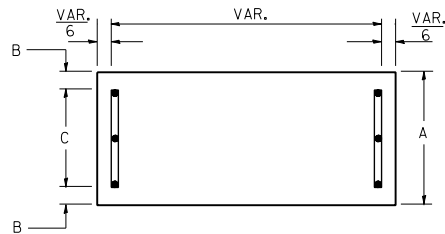
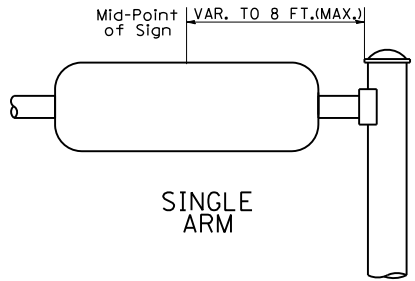


Table with dimensions A, B, C: 18", 2", 14"



SUPPORTING CHANNELS

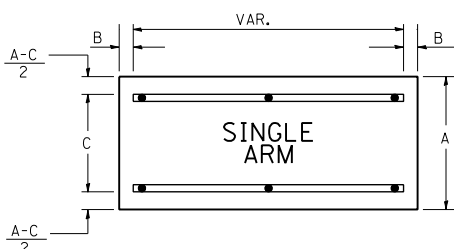
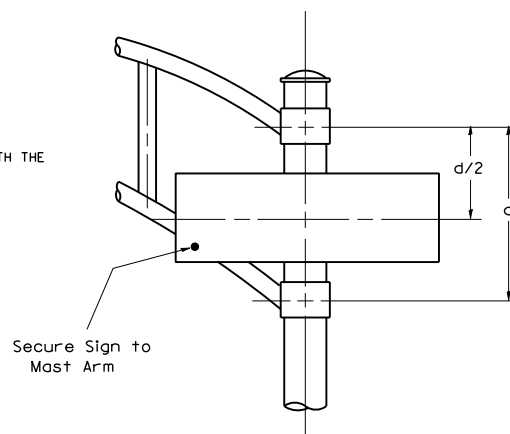


Table with dimensions A, B, C: 18", 2", 12"; 30", 2", 22"



SIGNFIX ALUMINUM CHANNEL FRAMING SYSTEM Shall be used. See Note #5.

Upper Case To Lower Case Spacing Chart 8-6 Inch Series 'C & D'

EXAMPLE. 2 3 DENOTES 3/8"

Spacing chart for upper case to lower case, 8-6 inch series. Columns include series, first letter, and second letter (acde, goq, bhikl, mnpru, fw, j, st, vy, x, z). Rows include series (AWX, B, CEG, D O O R, F, HIMN, JU, KL, P, S, T, V, Y, Z).

Lower Case To Lower Case Spacing Chart 6 Inch Series 'C & D'

Spacing chart for lower case to lower case, 6 inch series. Columns include series, first letter, and second letter (adhgij, lmnqu, bfkops, ce, r, tz, vy, w, x).

Number To Number Spacing Chart 8 Inch Series 'C & D'

Spacing chart for number to number, 8 inch series. Columns include series, first letter, and second number (0, 1, 2, 3, 4, 5, 6, 7, 8, 9).

UPPER AND LOWER CASE LETTER WIDTHS

Table of letter widths for upper and lower case letters in 6 inch and 8 inch series. Columns include series, letter, and width.

Table of number widths for 6 inch and 8 inch series. Columns include series, number, and width.